

PRODUCT DATA SHEET

Series 7200i
Double Hung Tilt-In
4 1/4" Frame Depth

PERFORMANCE DATA ¹	OPERATION	AAMA RATING	TEST SIZE (inches)	AIR (cfm/ft ²) @ 6.24 psf	WATER (psf)	DESIGN PRESSURE (psf)	STRUCTURAL OVERLOAD (psf)	OITC	U-FACTOR (BTU/HR/FT ² /F)
	Tilt-In	AW-PG50	60 x 99	0.24	12	50	75	Consult AWM	See Below

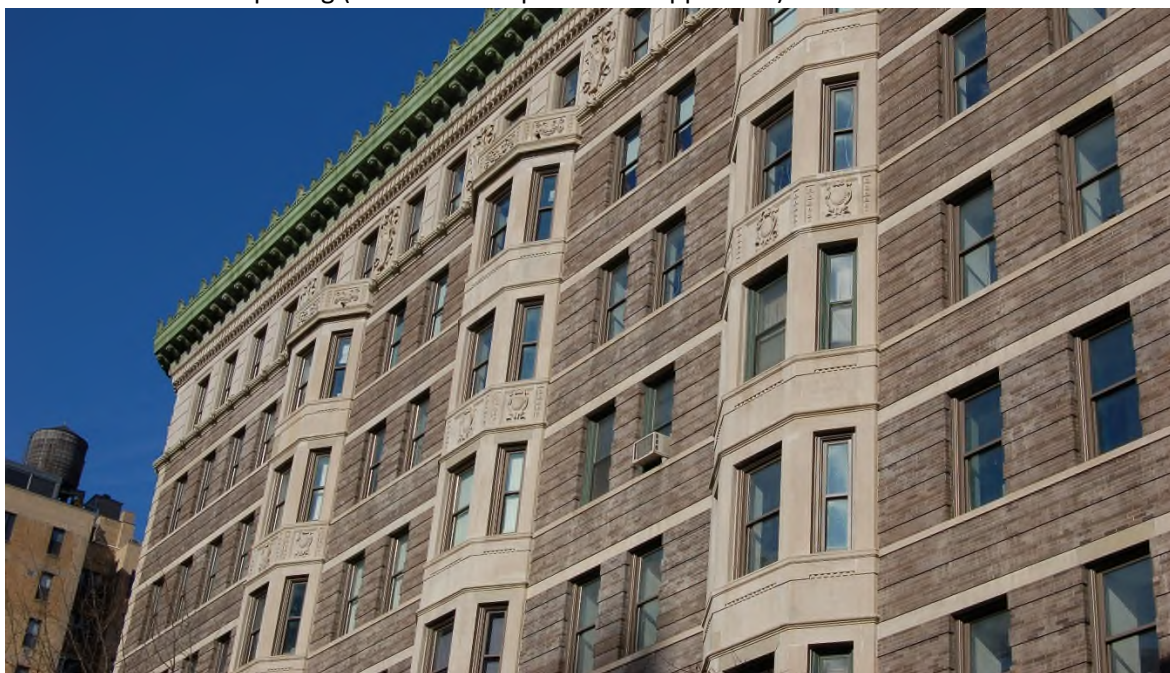
¹Based on independent certified laboratory testing per AAMA/WDMA/CSA/101/I.S.2/A440. Field results will vary based on size, test methods, accessories & conditions

STANDARD FEATURES

- Thermal strut thermal barrier for enhanced performance and dual finish capability
- Low profile design provides maximum daylight and minimal sightlines making it ideal for historic or Landmark applications
- Sash tilt inward for ease of cleaning by maintenance personnel
- Unobtrusive internal metal tilt latch for a clean appearance and extreme safety
- Wet glazed with structural silicone for maximum seal strength and water resistance
- Available with straight or beveled sash for aesthetic design flexibility
- Class 5 high performance balances lift 70% of the sash weight

OPTIONAL FEATURES

- Dual glazing with removable access panels (allows for vandal resistant polycarbonate glazing or 5/8" deep integral blinds (straight leg only))
- Class 6 balances for increased weight capacity, enhanced lift assistance and 10-year warranty
- True, exterior applied or between the lites of dual glazing muntin grids
- 10 psf reduced water resistance sill for decreased sightline
- Full or half insect screens (fiberglass, aluminum or stainless steel mesh)
- Hurricane Windborne Debris Impact Resistance (Large Missile)
- Limit devices for restricted opening (NYCDOH stamped where applicable)



THERMAL PERFORMANCE CHART ¹	WINDOW SIZE (inches)	CENTER OF INSULATED GLASS U-FACTOR/SPACER TYPE ("Alum."=Aluminum, "Warm"=Warm Edge) ²							
		0.33/Alum.	0.33/Warm	0.29/Alum.	0.29/Warm	0.24/Alum.	0.24/Warm	0.20/Alum.	0.20/Warm
	47 x 59*	0.506	0.479	0.480	0.452	0.450	0.420	0.409	0.385
	48 x 72	0.483	0.459	0.456	0.431	0.425	0.398	0.382	0.360

¹Based on independent certified simulations in accordance with NFRC 100

²Consult AWM for additional configurations

*Designates NFRC Gateway size

4/4/19