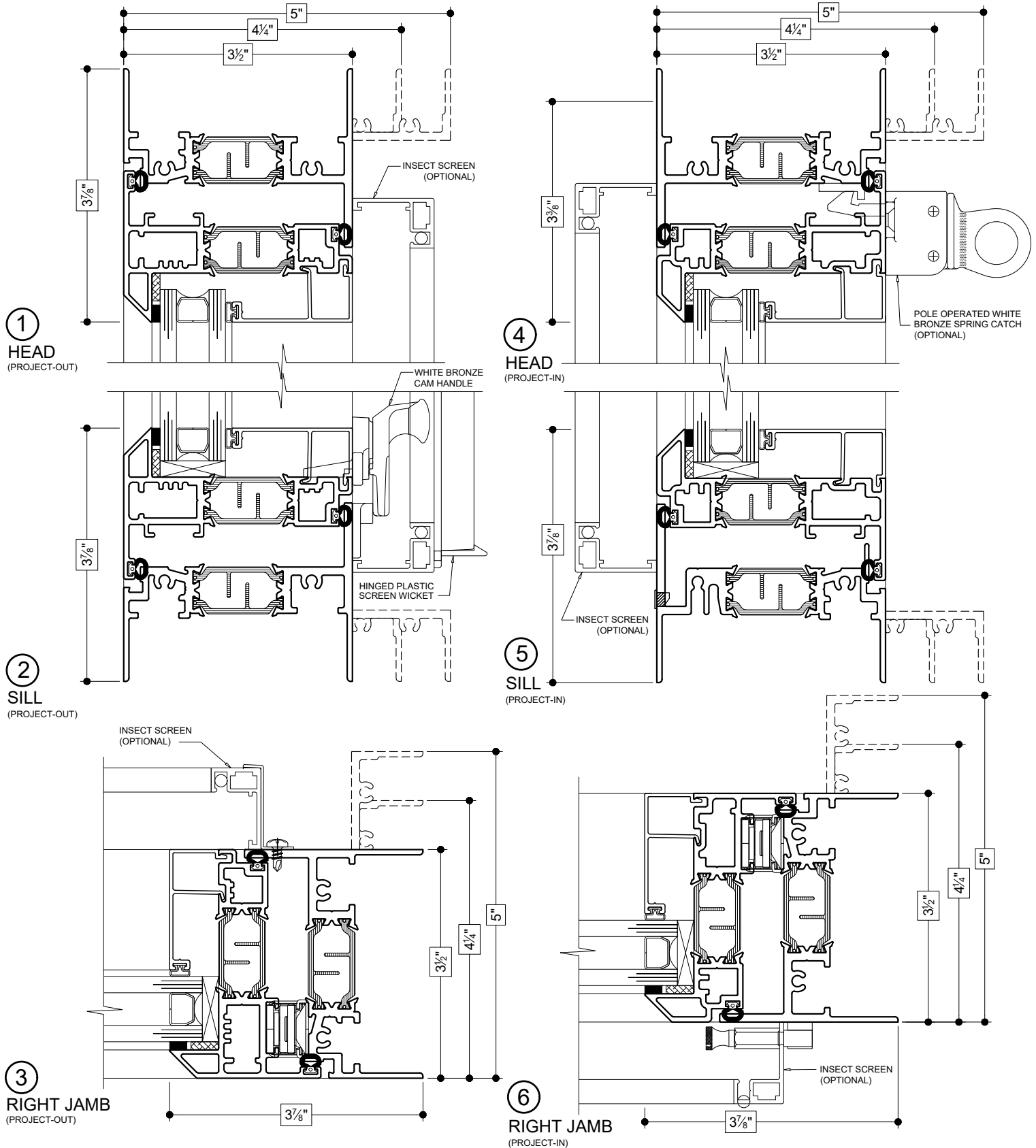


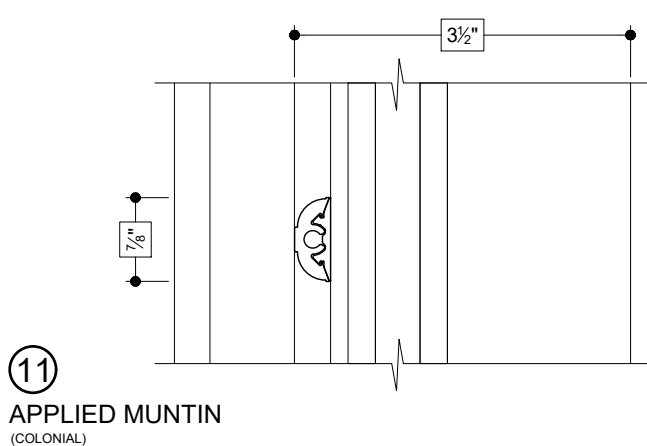
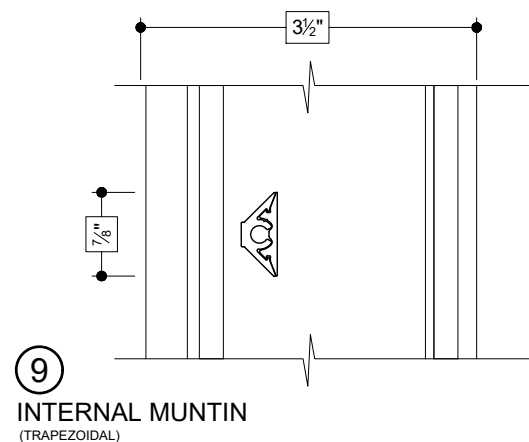
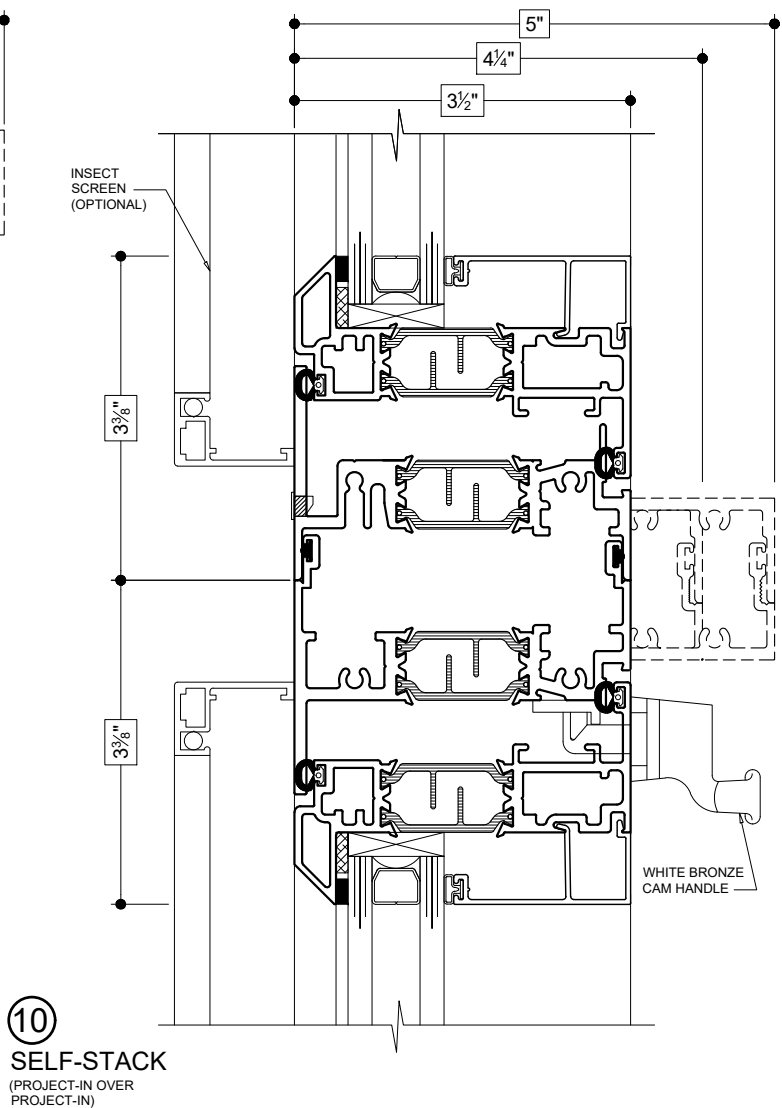
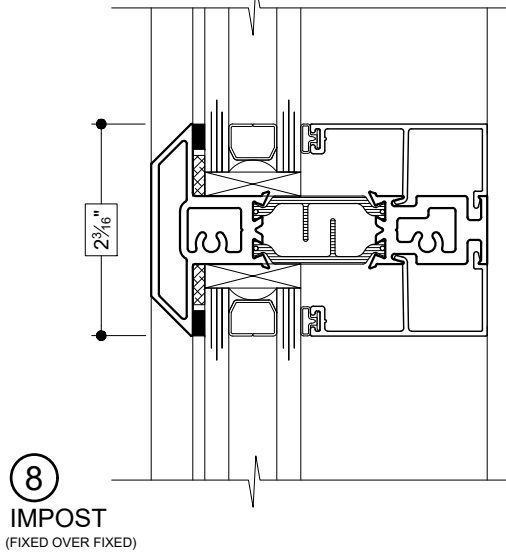
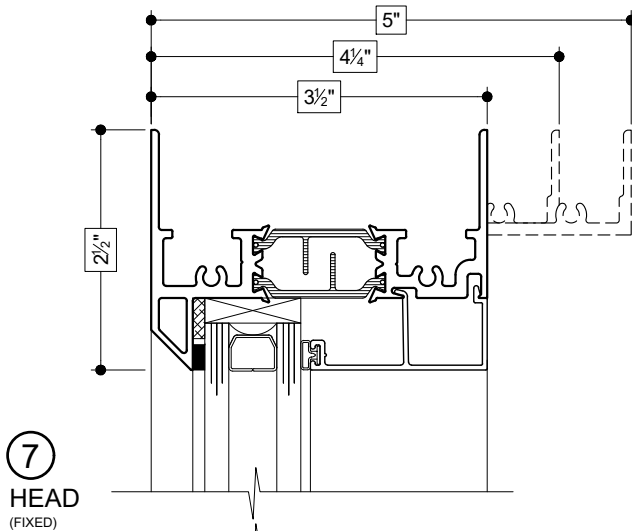
Details shown reflect the most commonly used configurations.
Contact AWM for additional details and/or assistance.

10/31/19



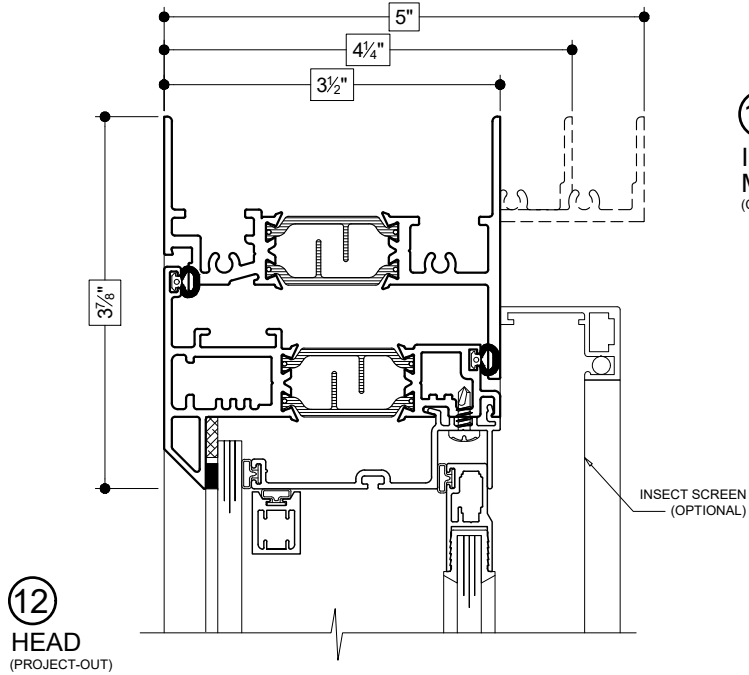
Details shown reflect the most commonly used configurations.
Contact AWM for additional details and/or assistance.

10/31/19

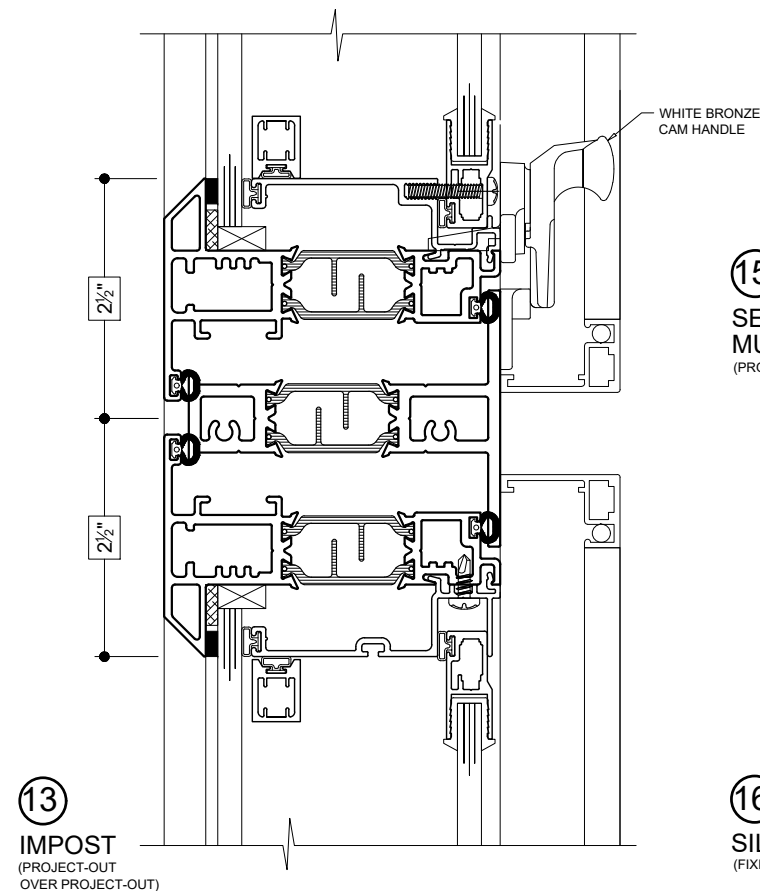
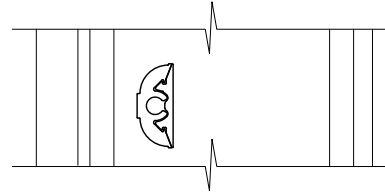


Details shown reflect the most commonly used configurations.
Contact AWM for additional details and/or assistance.

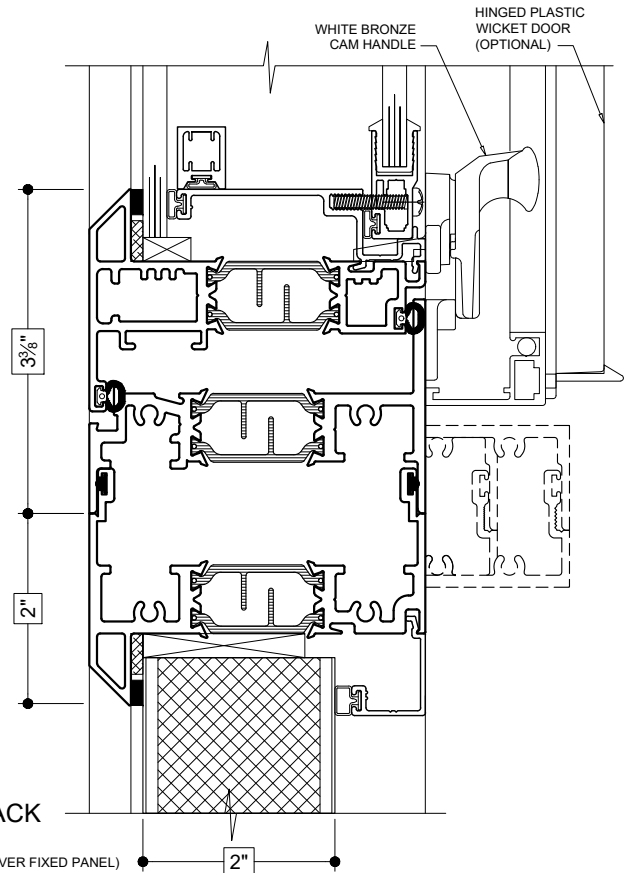
10/31/19



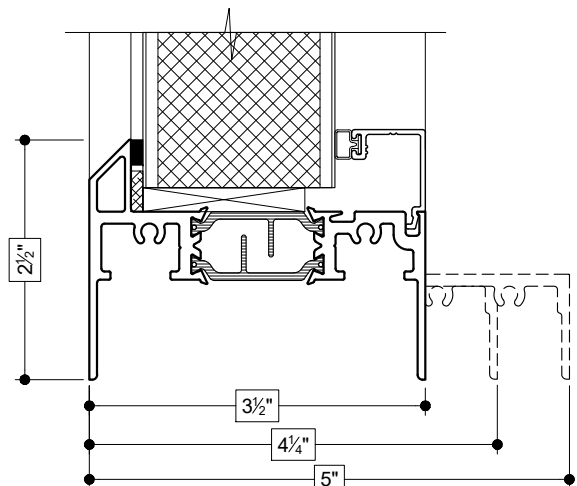
14
INTERNAL
MUNTIN
(COLONIAL)



15
SELF-STACK
MULLION
(PROJECT-OUT OVER FIXED PANEL)



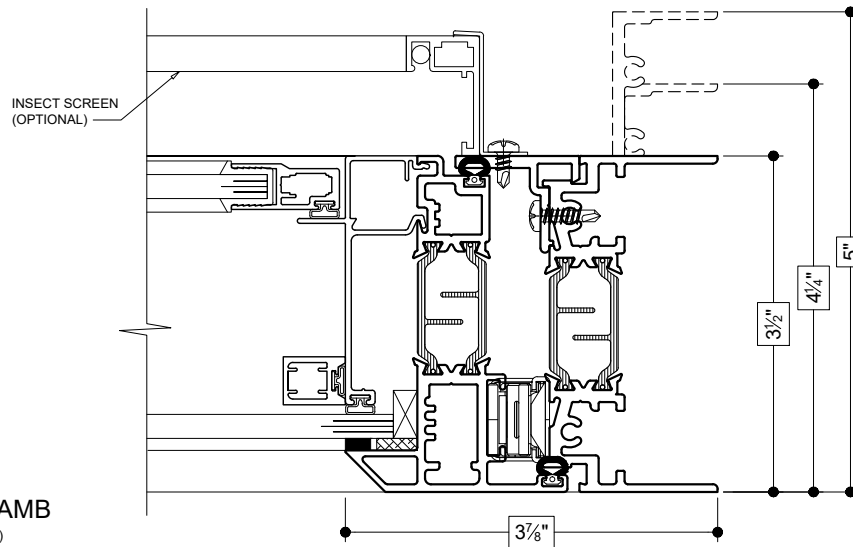
16
SILL
(FIXED PANEL)



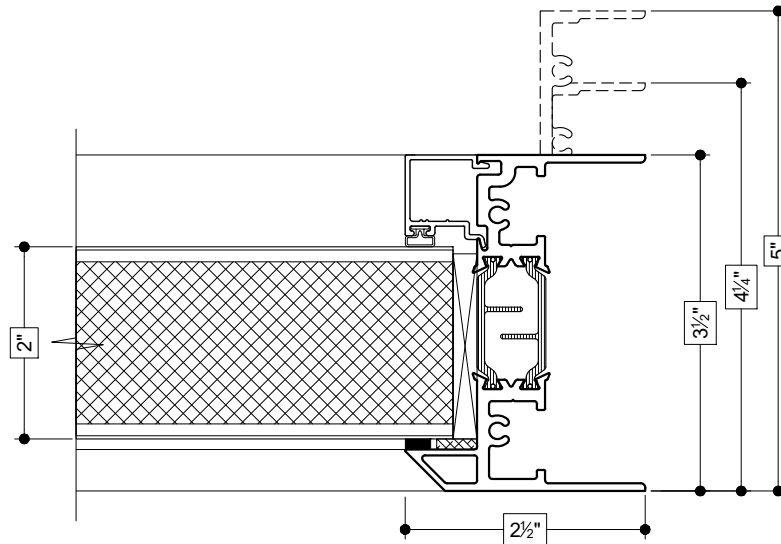
Details shown reflect the most commonly used configurations.
Contact AWM for additional details and/or assistance.

10/31/19

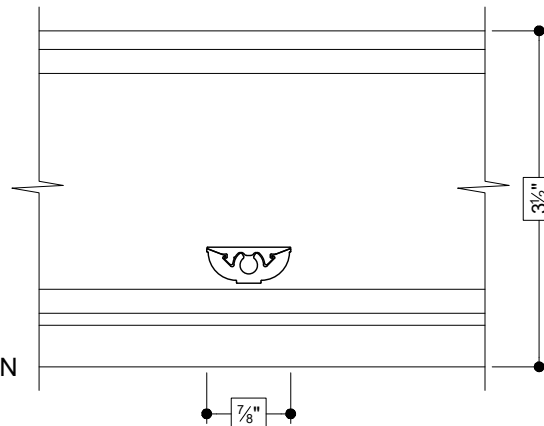
17
RIGHT JAMB
(PROJECT-OUT)



18
RIGHT JAMB
(FIXED PANEL)



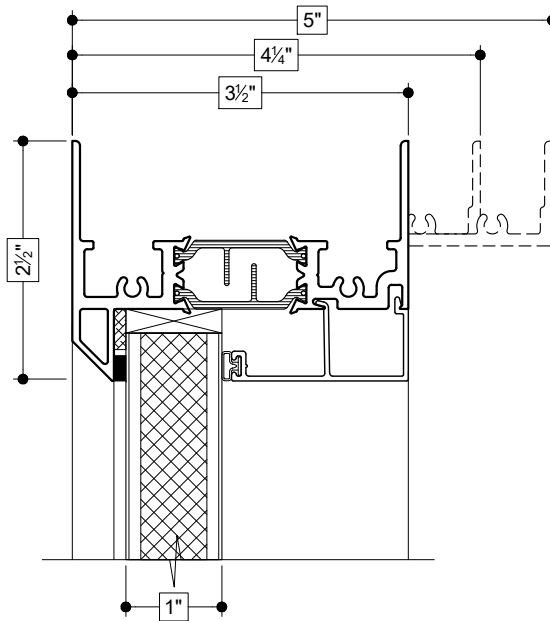
19
INTERNAL MUNTIN
(COLONIAL)



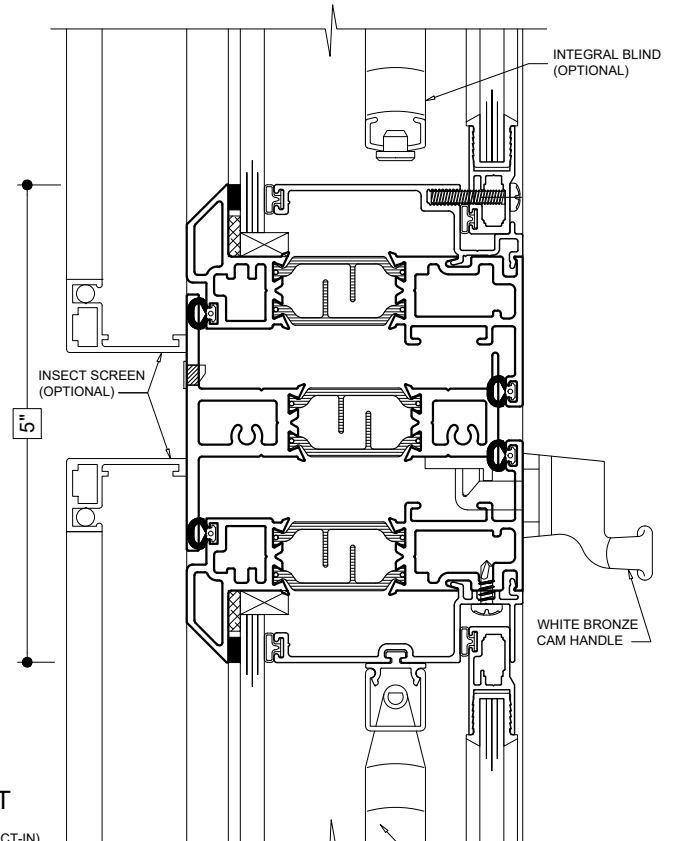
Details shown reflect the most commonly used configurations.
Contact AWM for additional details and/or assistance.

10/31/19

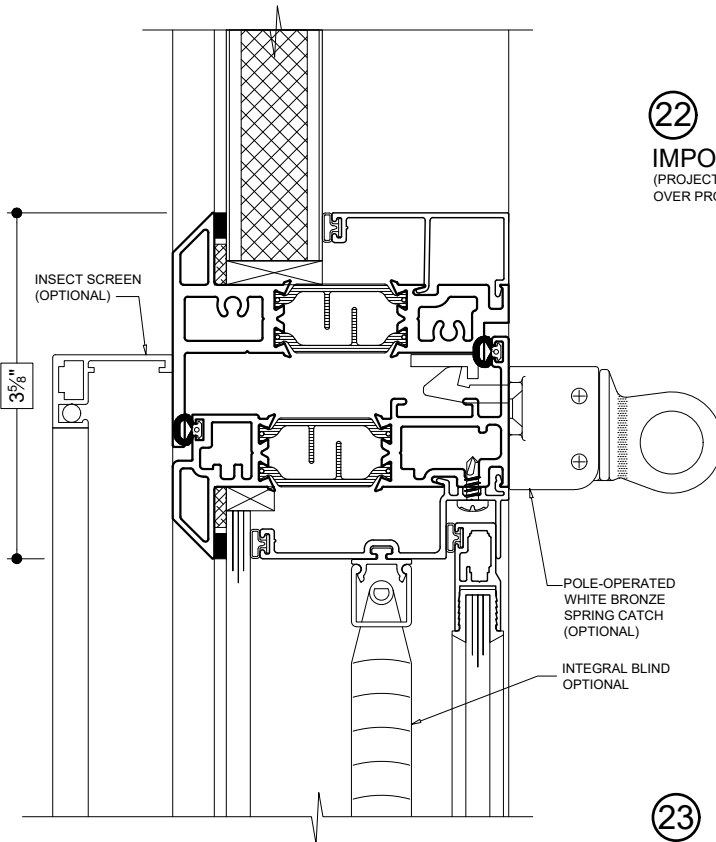
20
HEAD
(FIXED PANEL)



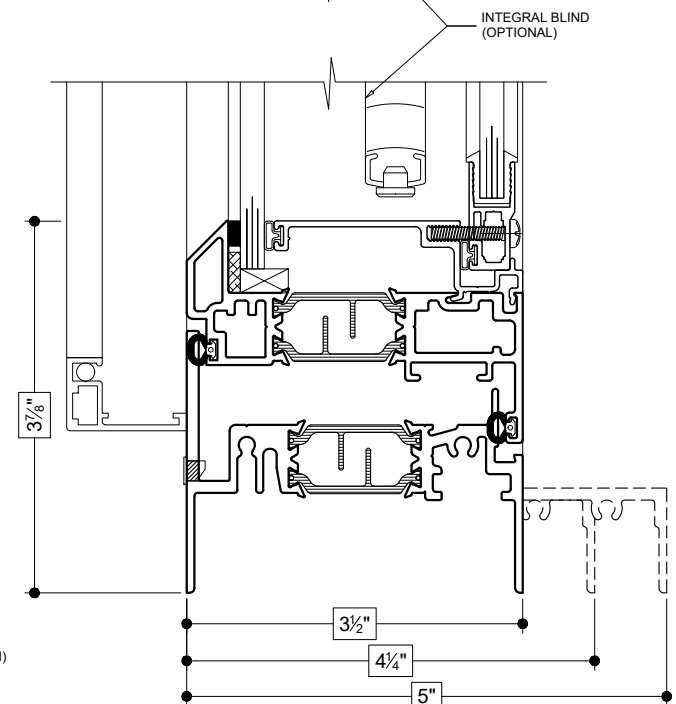
22
IMPOST
(PROJECT-IN
OVER PROJECT-IN)

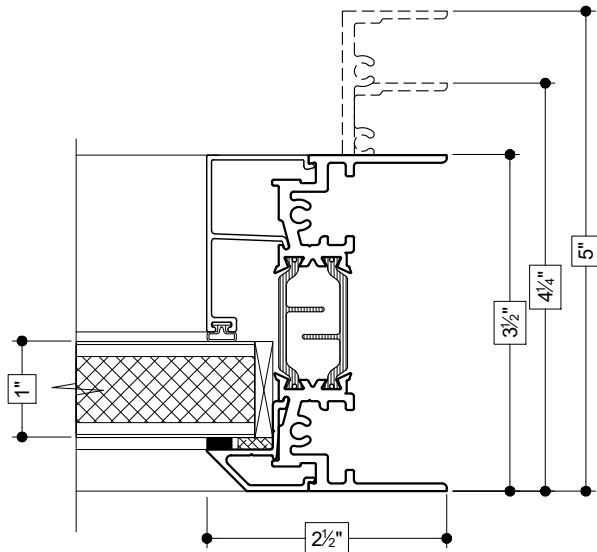


21
IMPOST
(FIXED PANEL OVER PROJECT-IN)

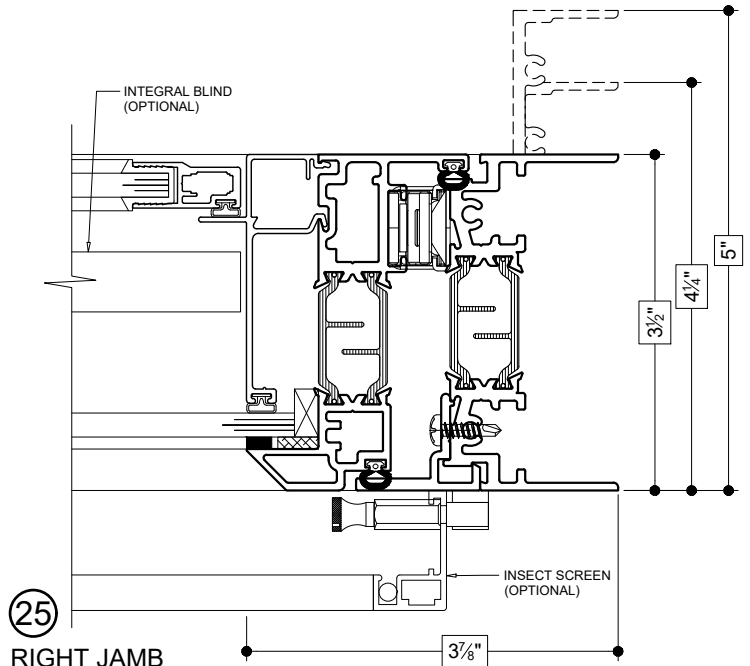


23
SILL
(PROJECT-IN)

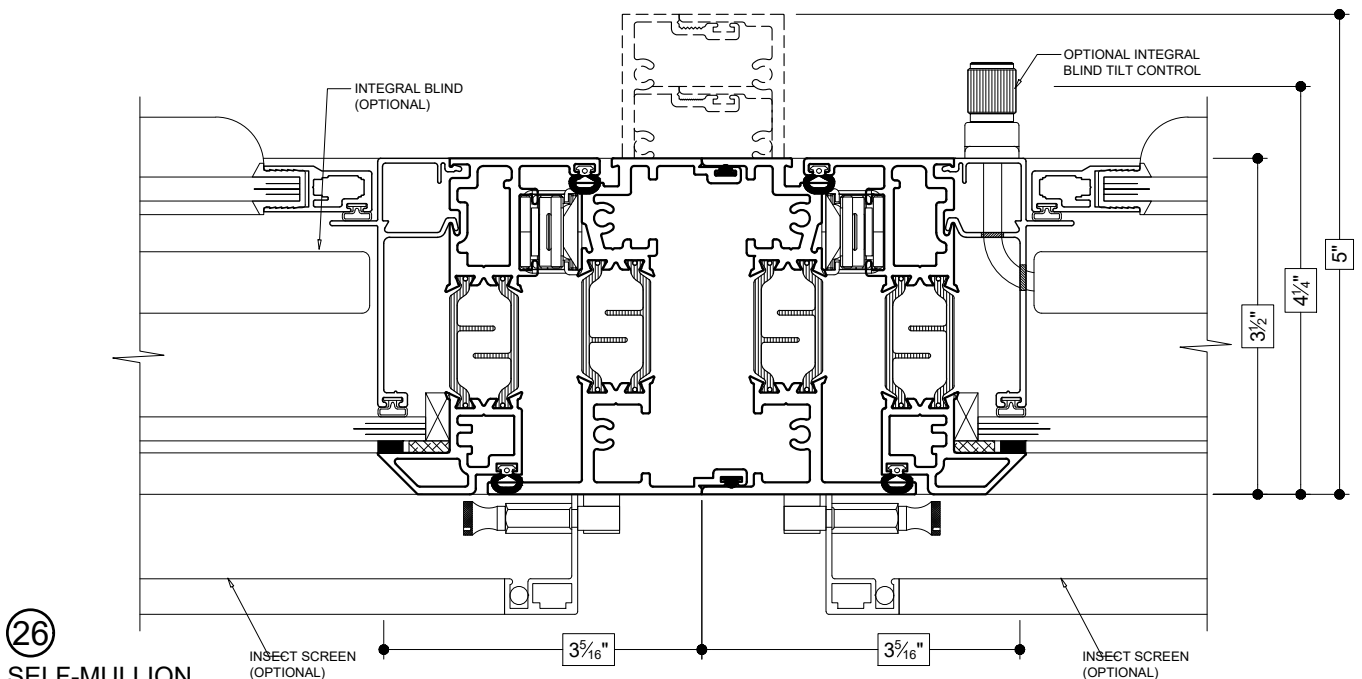




(24)
RIGHT JAMB
(FIXED PANEL)



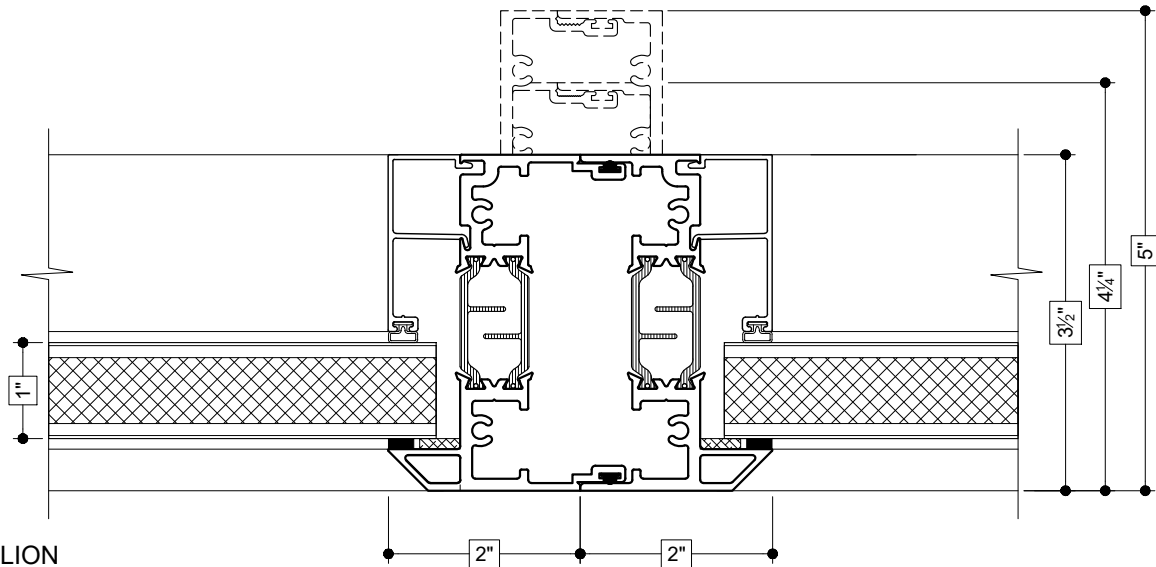
(25)
RIGHT JAMB
(PROJECT-IN)



(26)
SELF-MULLION
(PROJECT-IN TO PROJECT-IN)

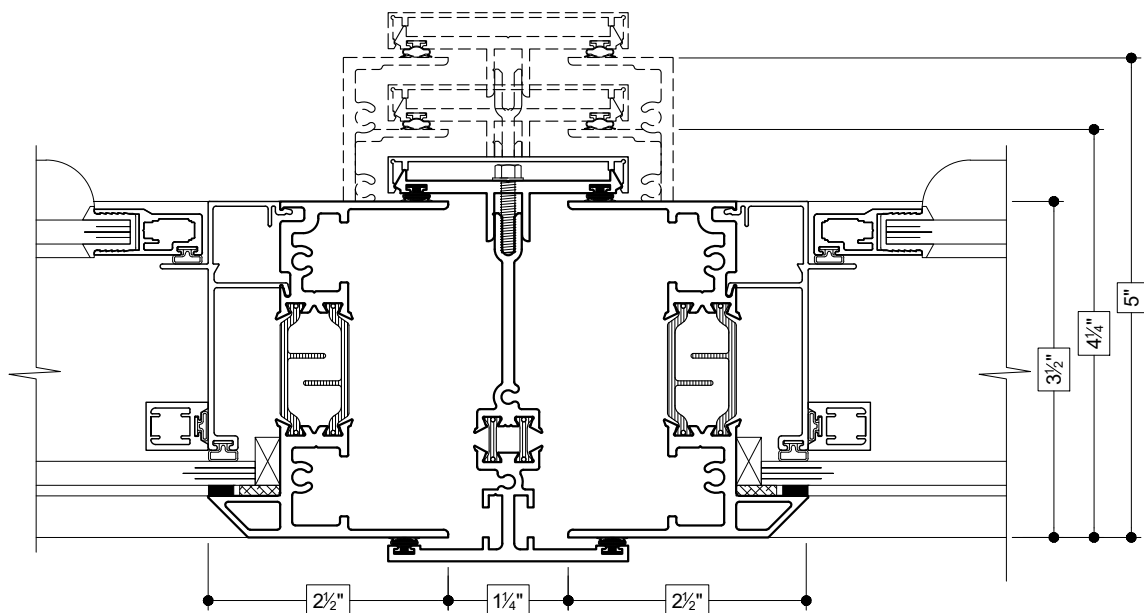
27

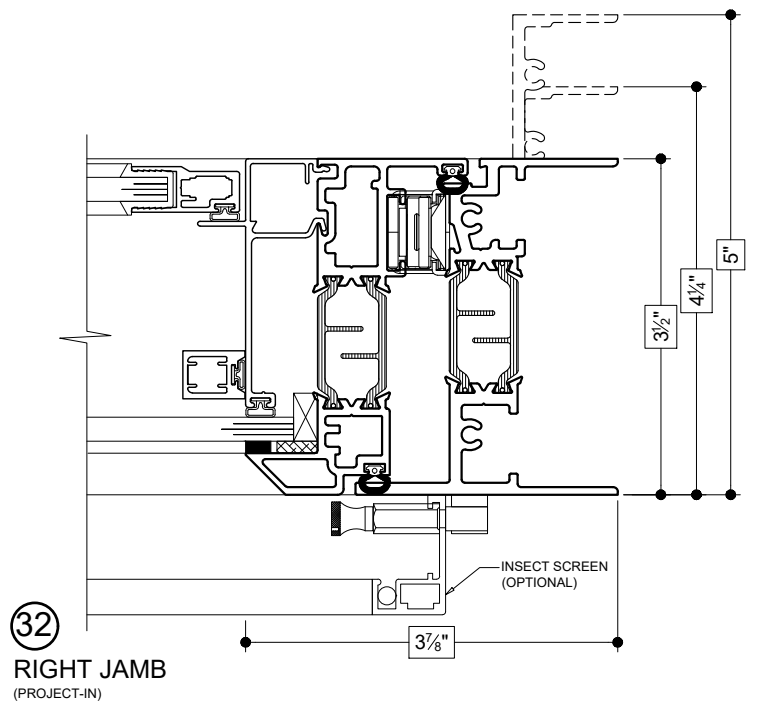
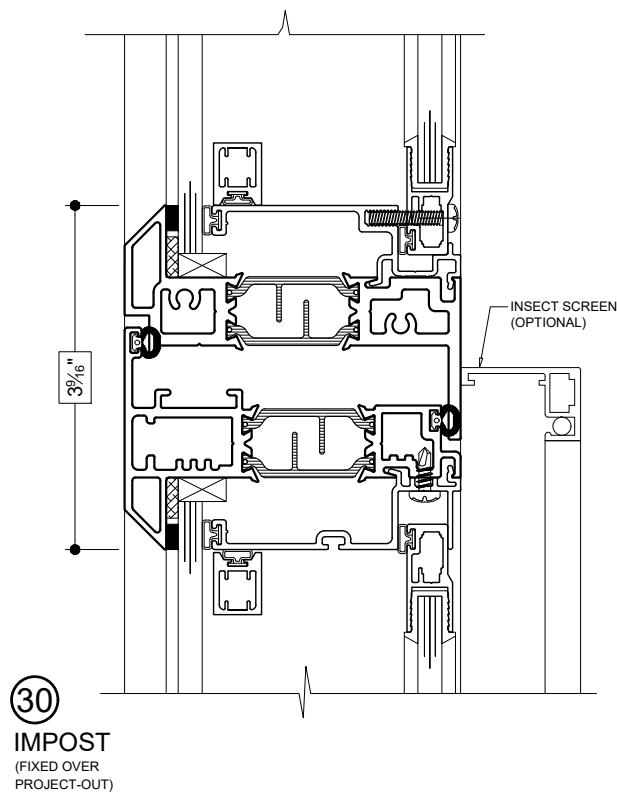
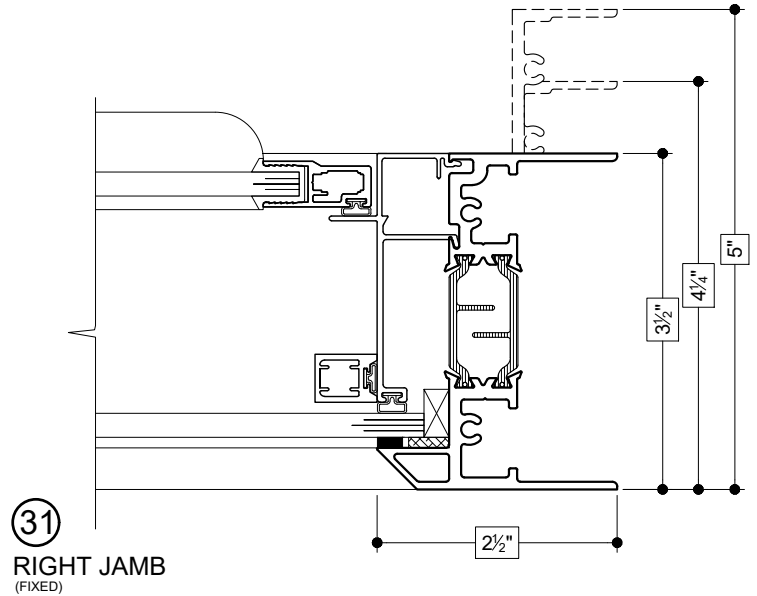
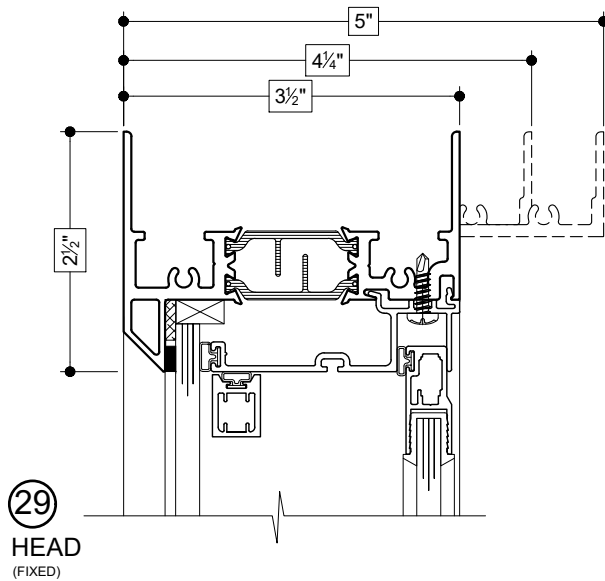
SELF-MULLION
(FIXED PANEL TO FIXED PANEL)



28

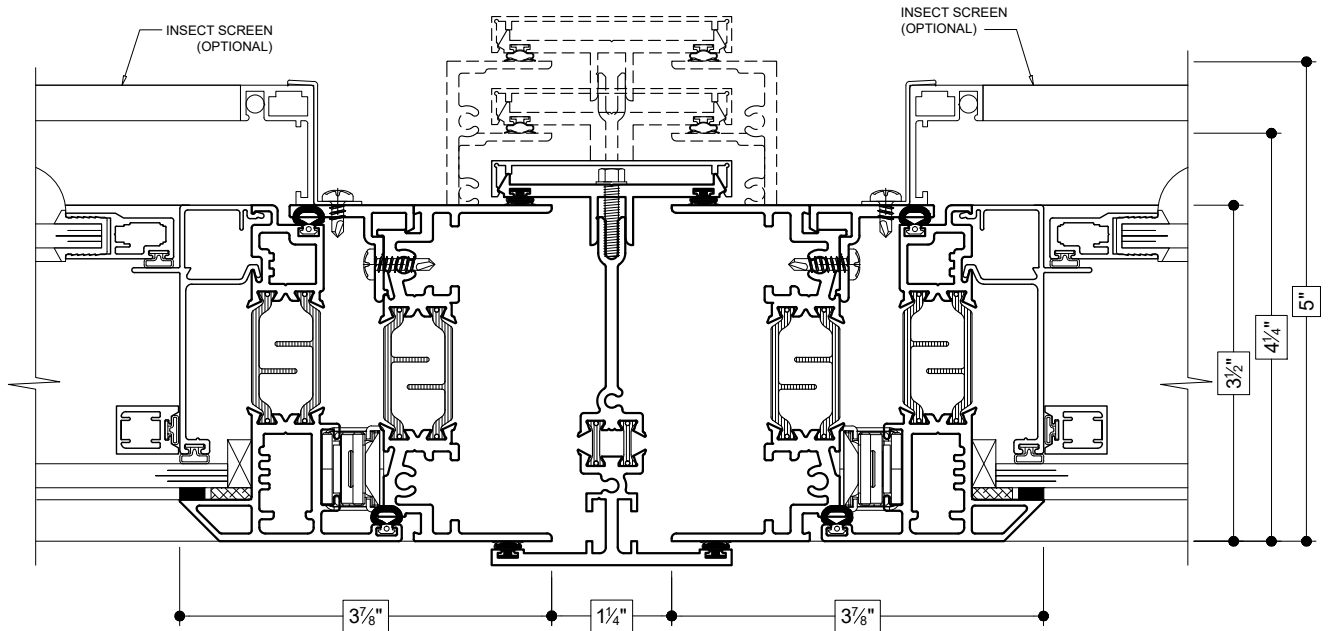
3-PIECE MULLION
(FIXED TO FIXED)





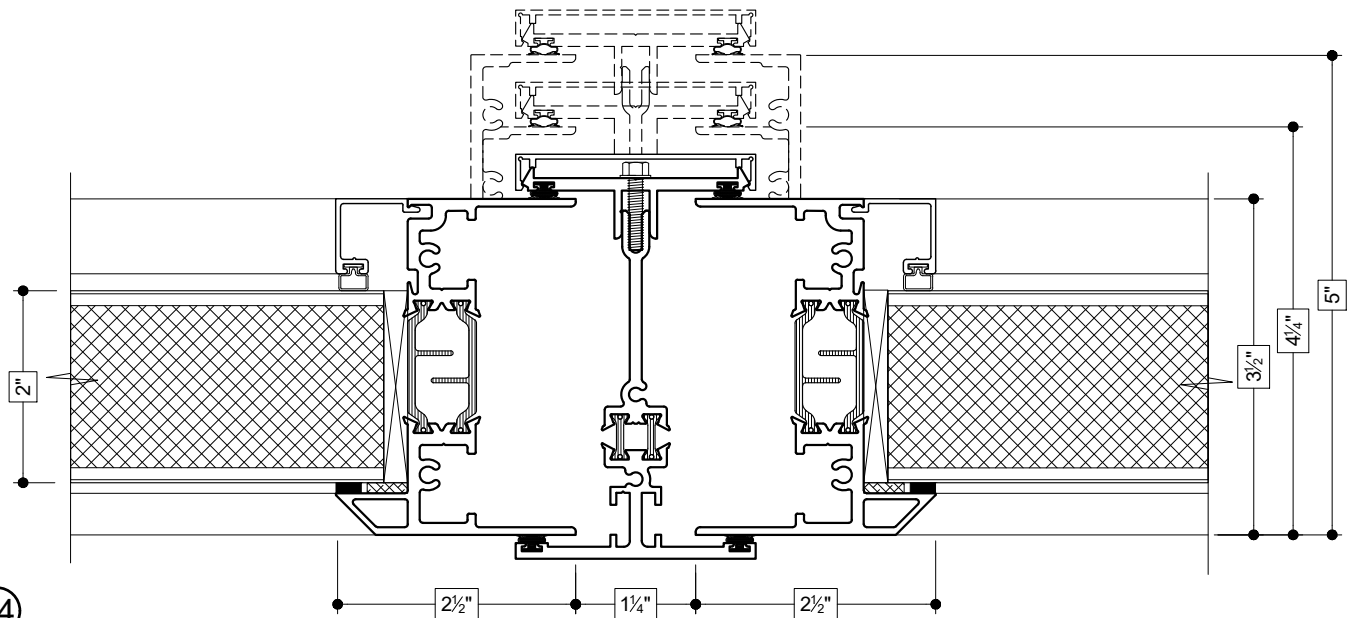
Details shown reflect the most commonly used configurations.
Contact AWM for additional details and/or assistance.

10/31/19



33

3-PIECE MULLION
(PROJECT-OUT TO PROJECT-OUT)

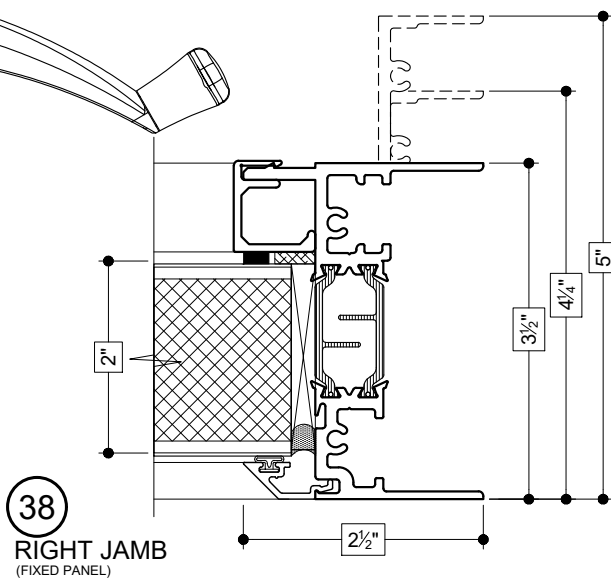
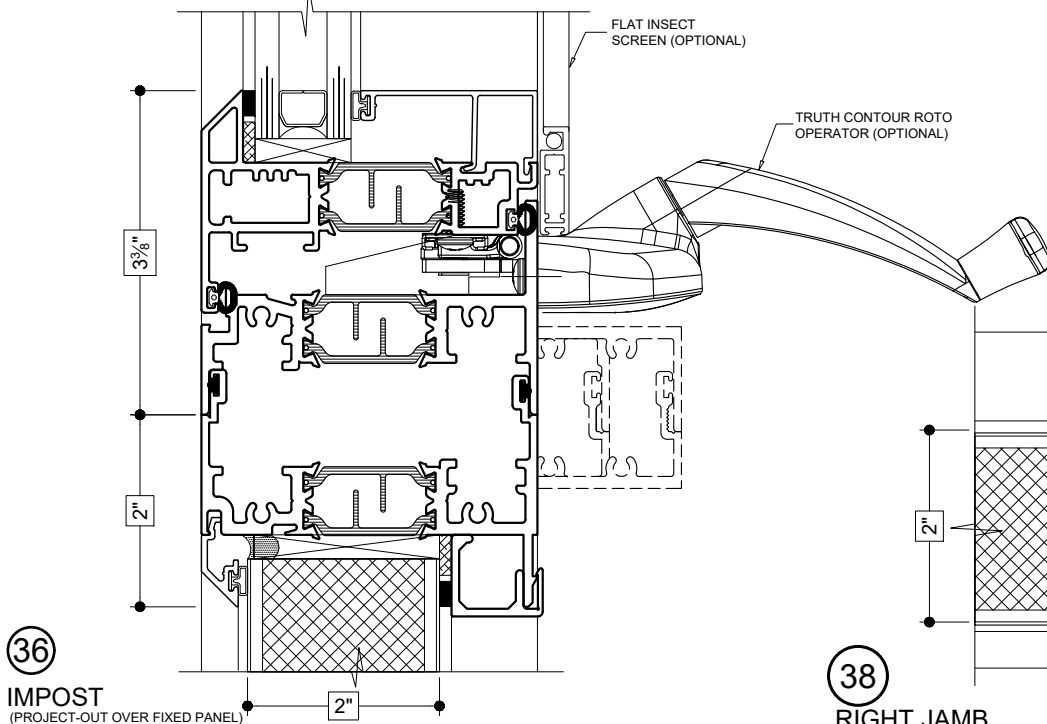
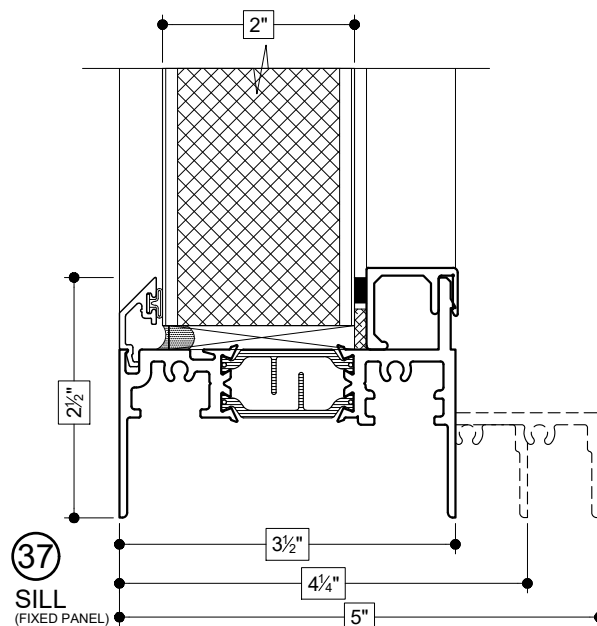
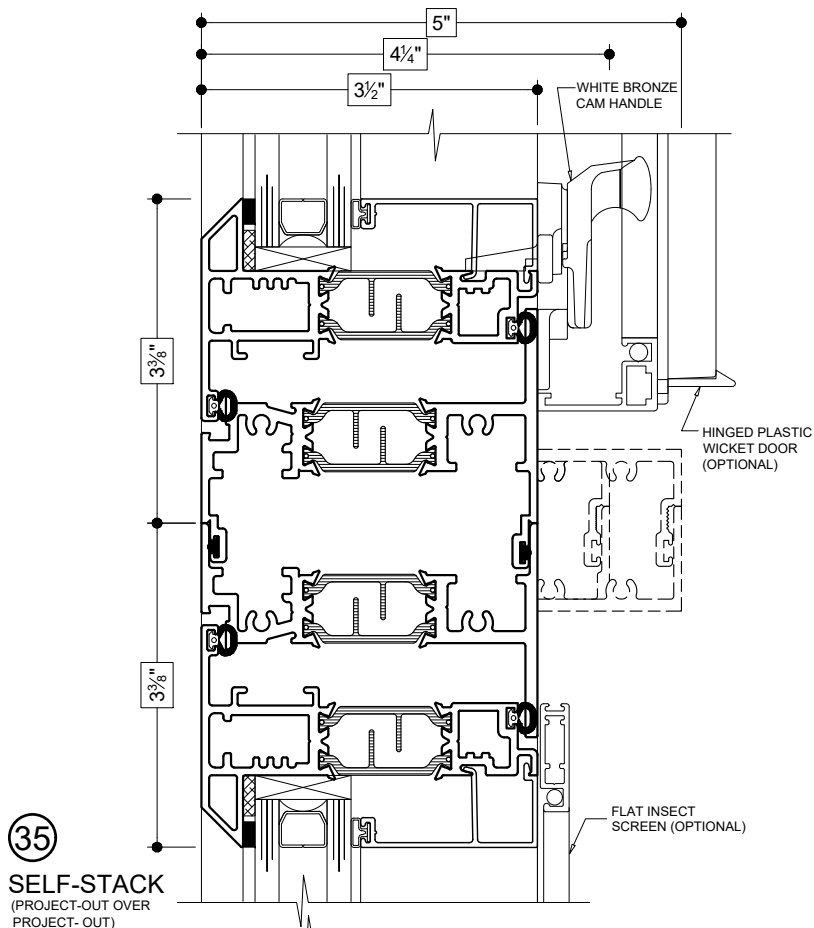


34

3-PIECE MULLION
(FIXED PANEL TO FIXED PANEL)

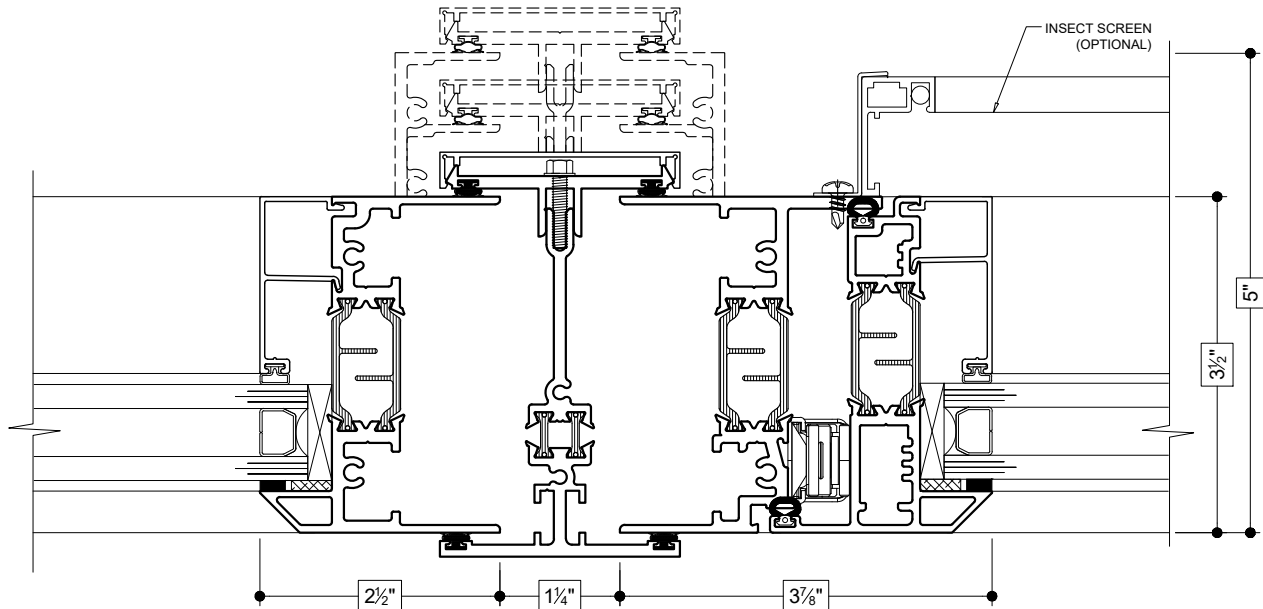
Details shown reflect the most commonly used configurations.
Contact AWM for additional details and/or assistance.

10/31/19



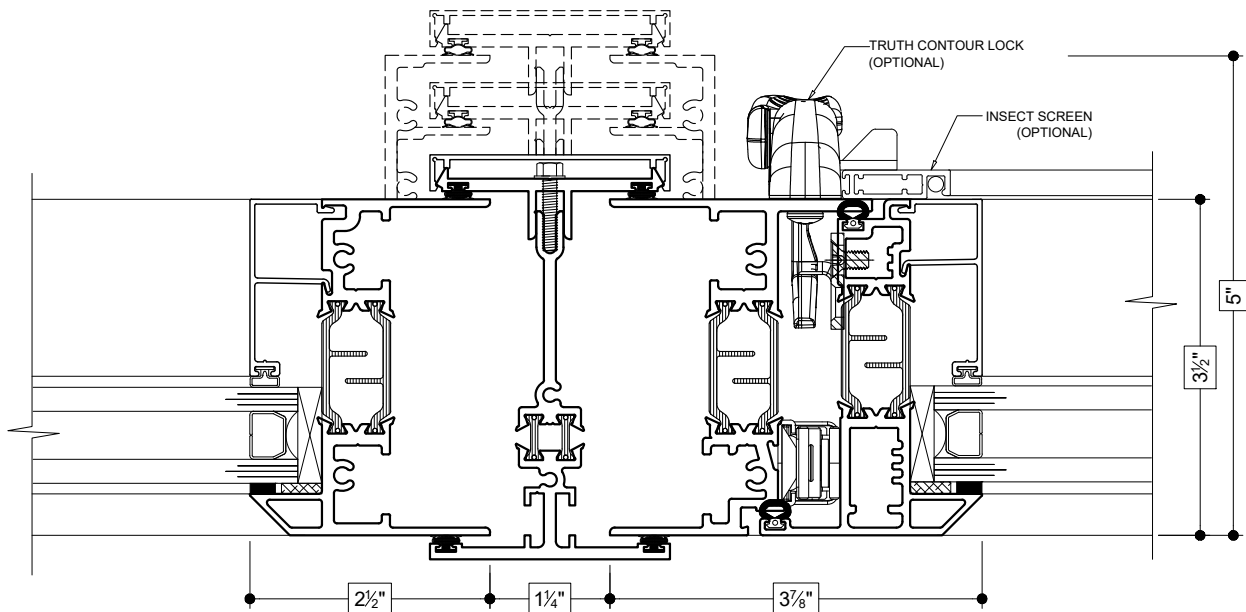
Details shown reflect the most commonly used configurations.
Contact AWM for additional details and/or assistance.

10/31/19



39

3-PIECE MULLION
(FIXED TO PROJECT-OUT)

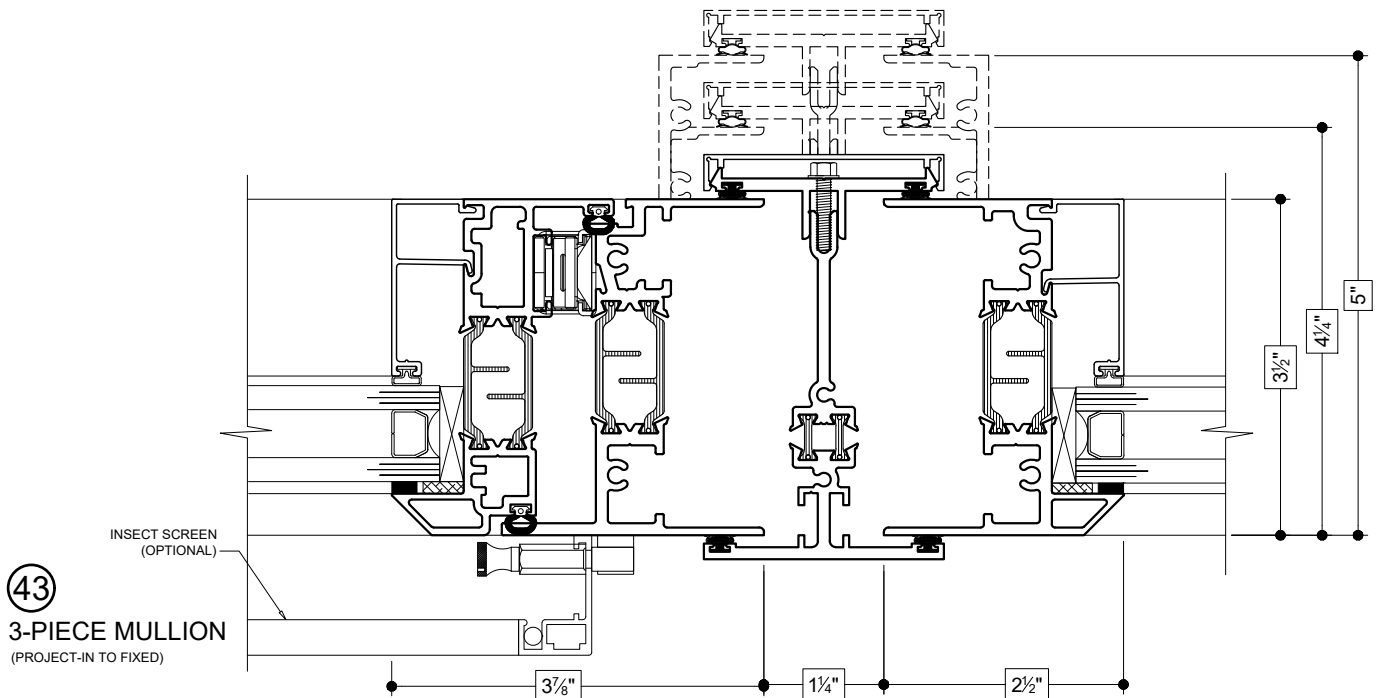
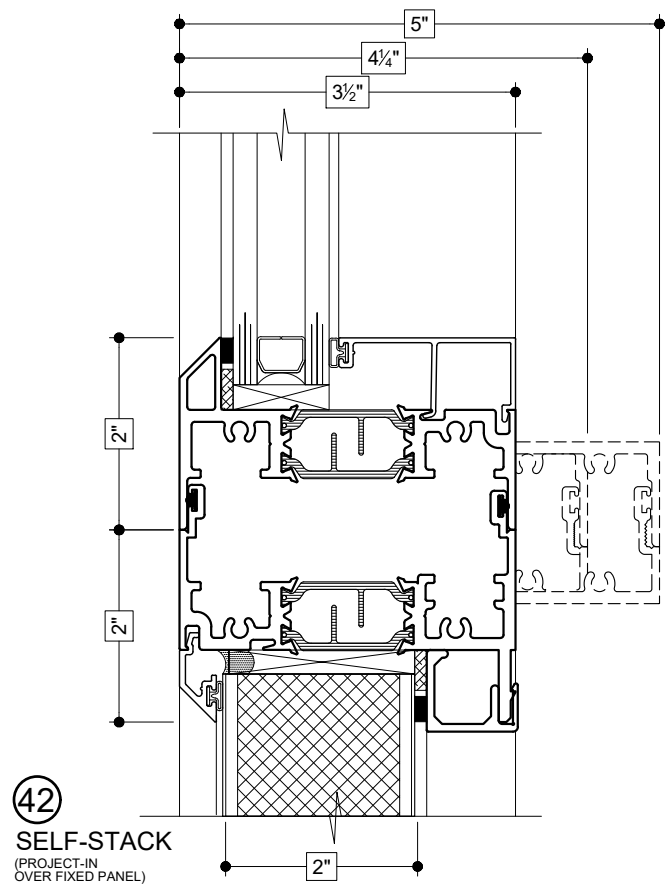
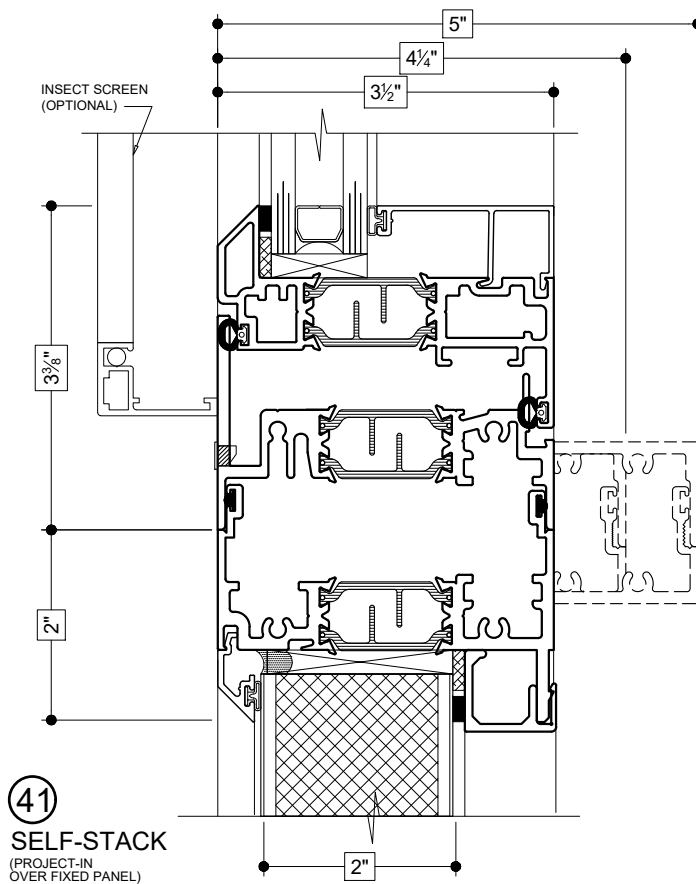


40

3-PIECE MULLION
(FIXED TO PROJECT-OUT)

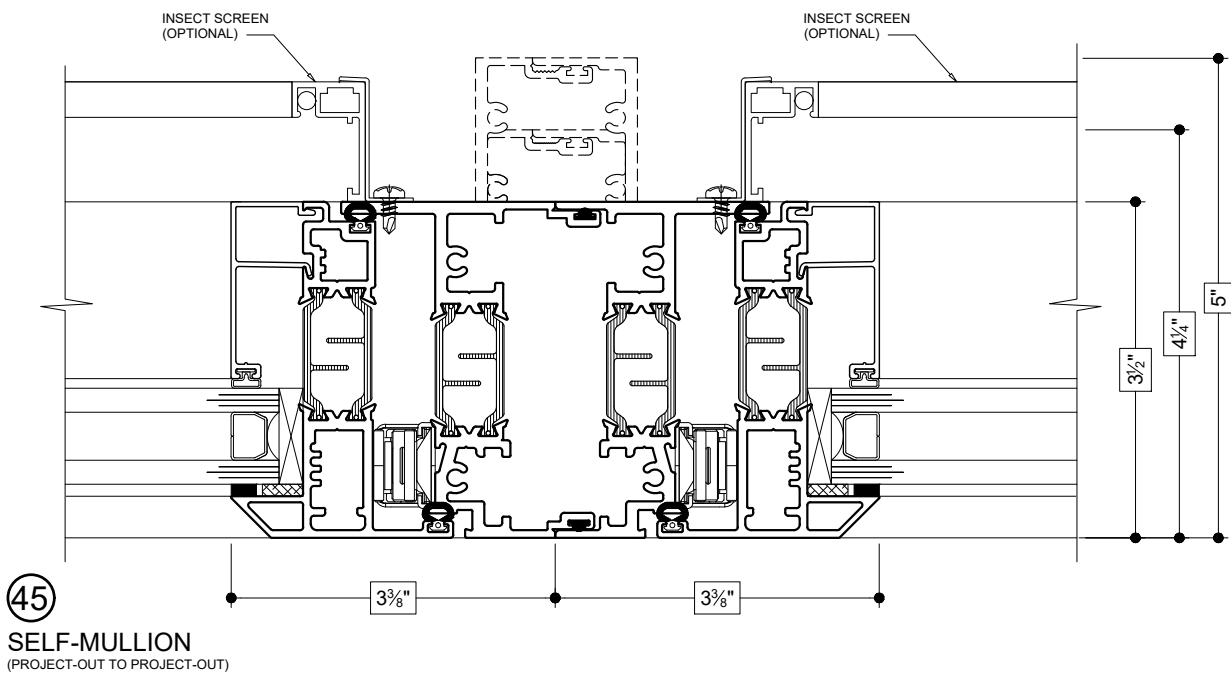
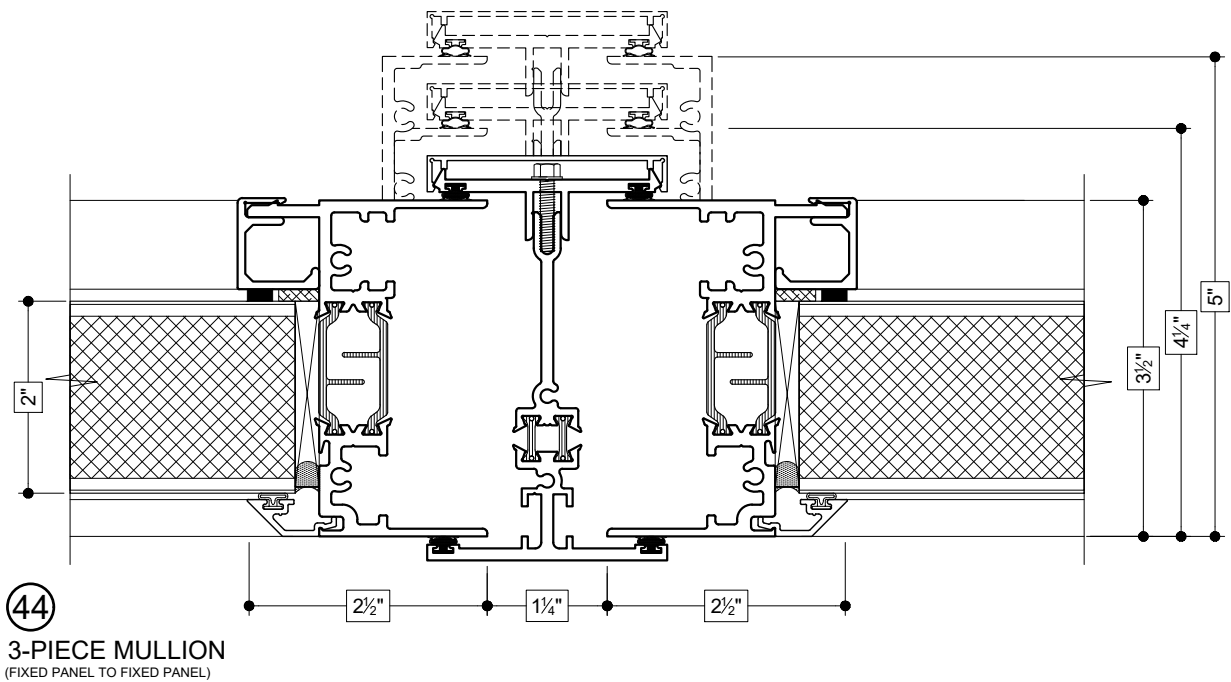
Details shown reflect the most commonly used configurations.
Contact AWM for additional details and/or assistance.

10/31/19



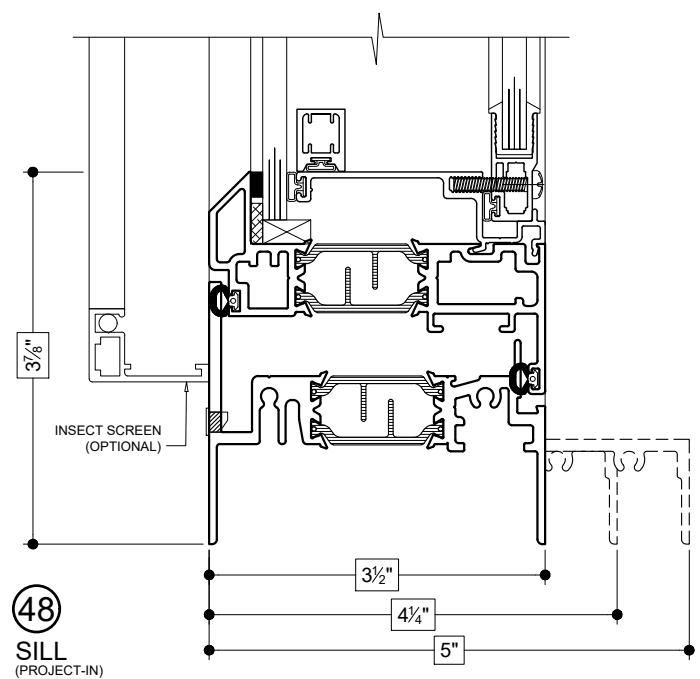
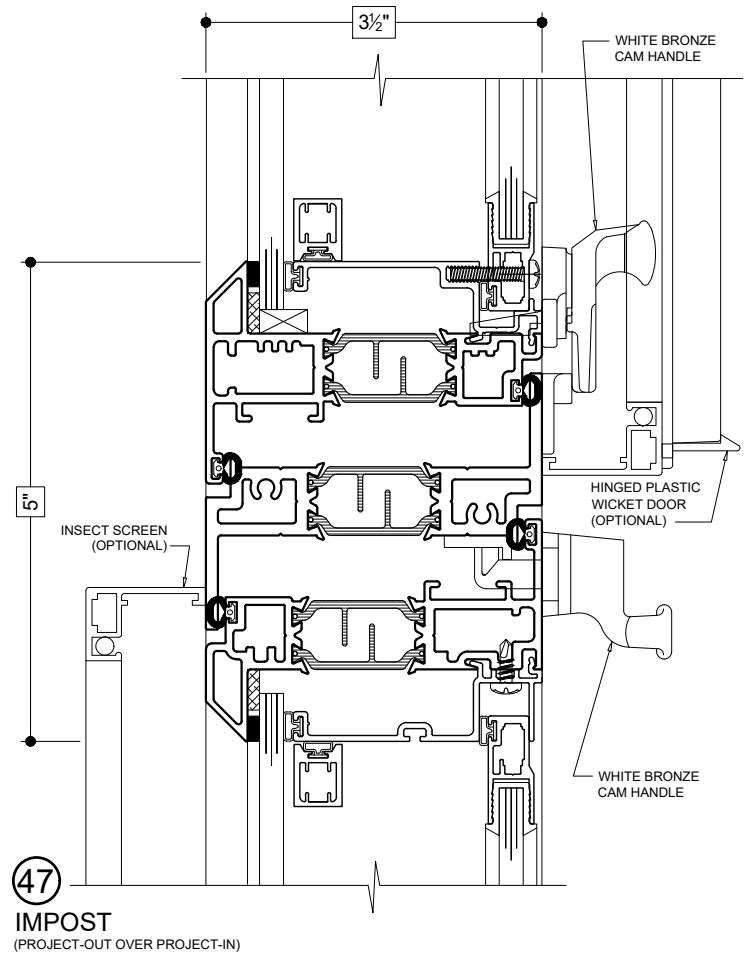
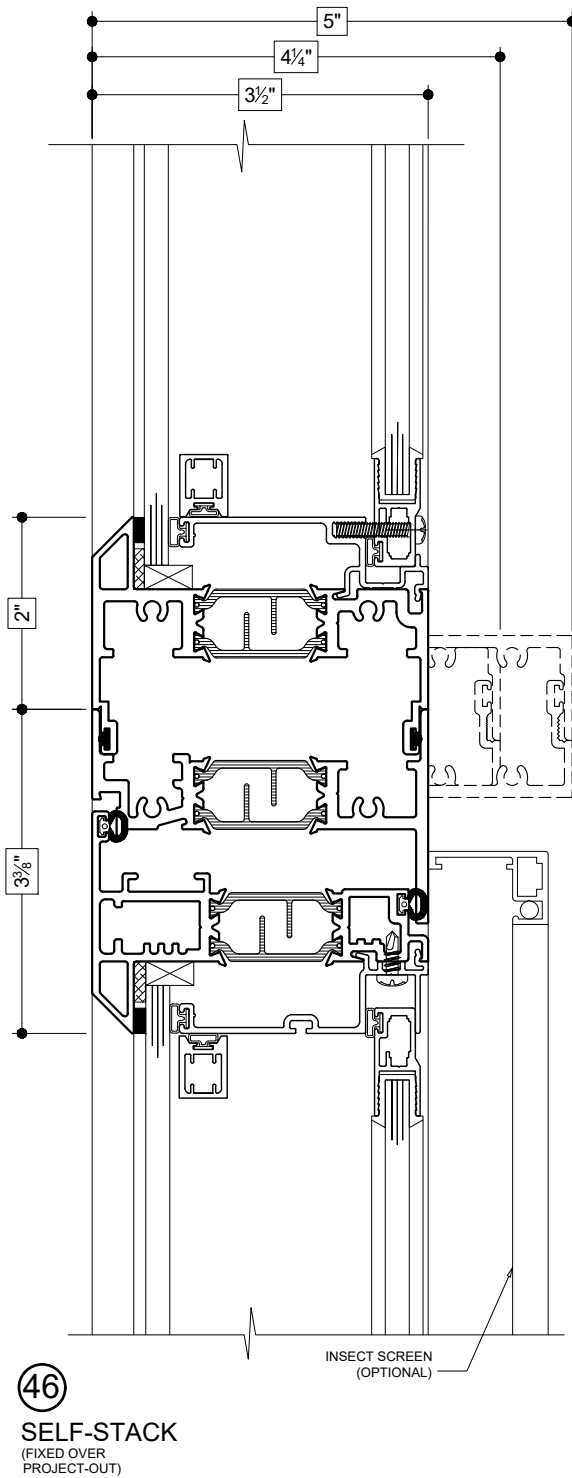
Details shown reflect the most commonly used configurations.
Contact AWM for additional details and/or assistance.

10/31/19

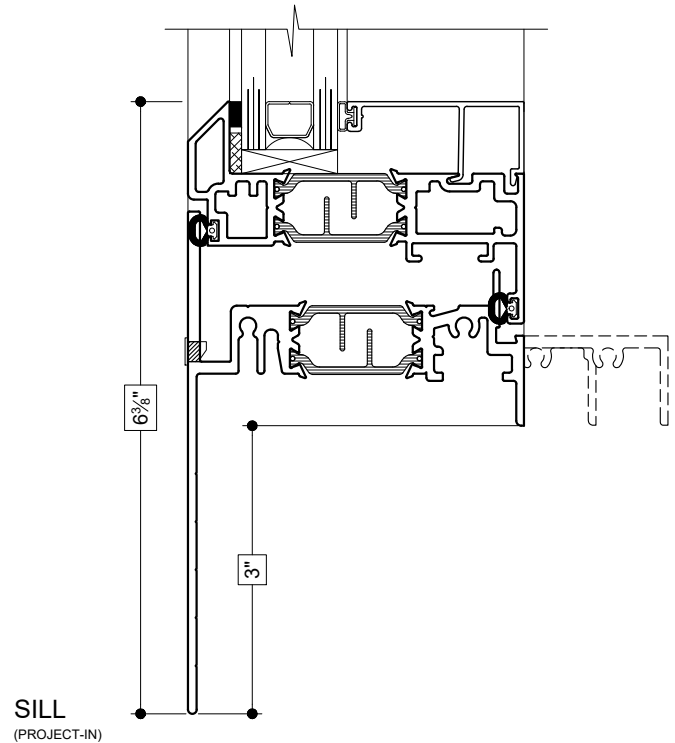
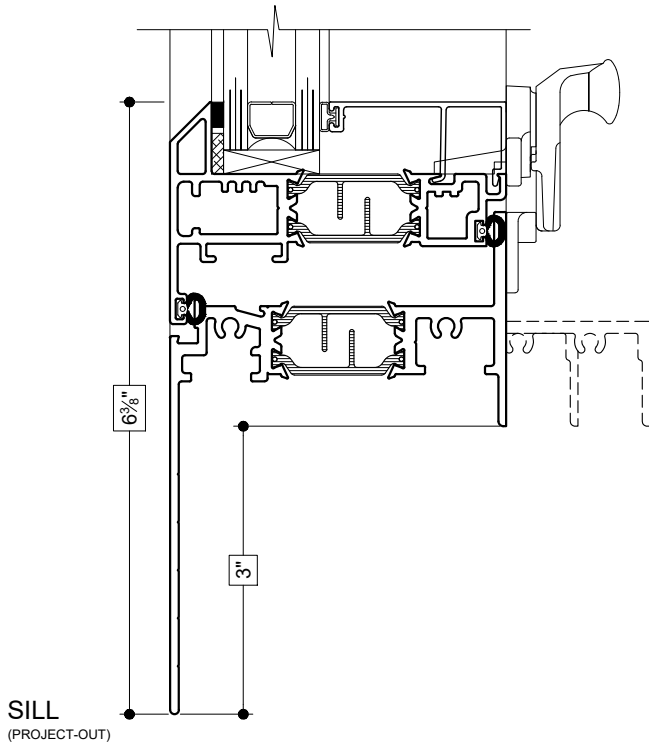
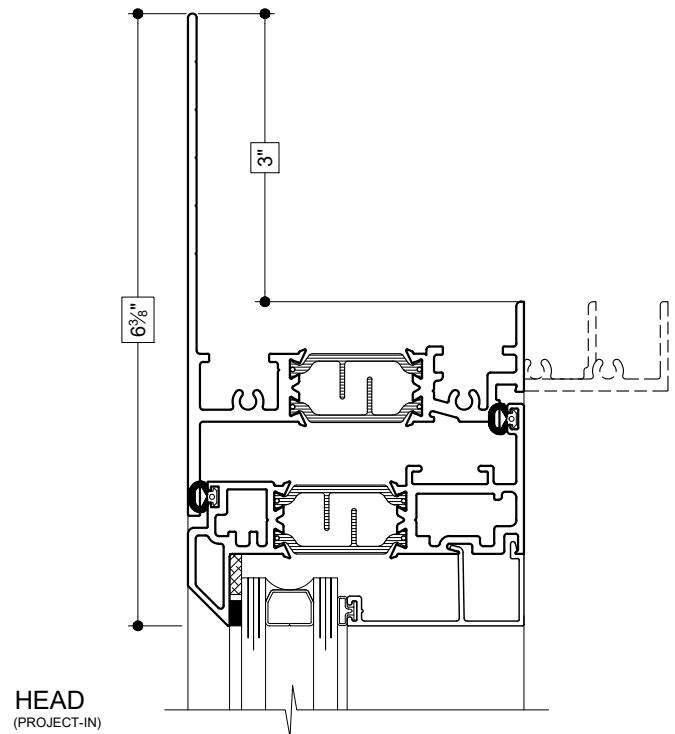
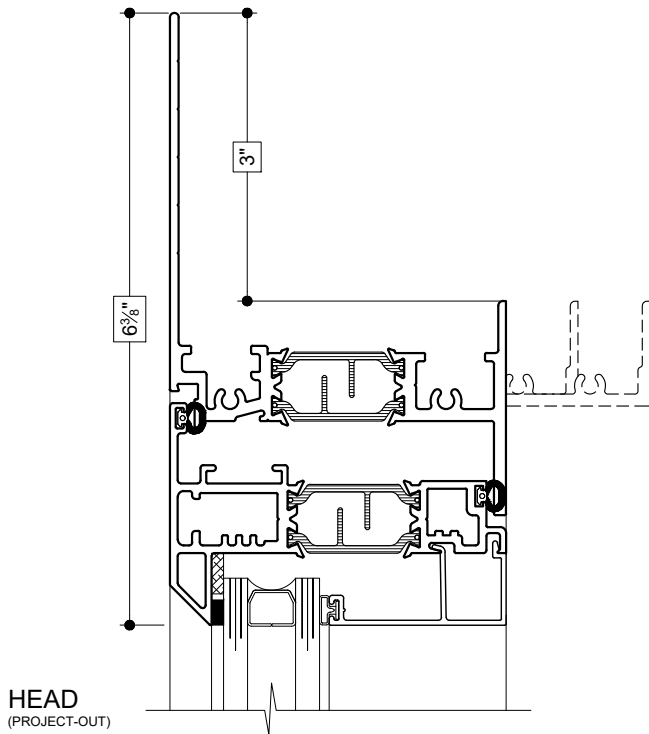


Details shown reflect the most commonly used configurations.
Contact AWM for additional details and/or assistance.

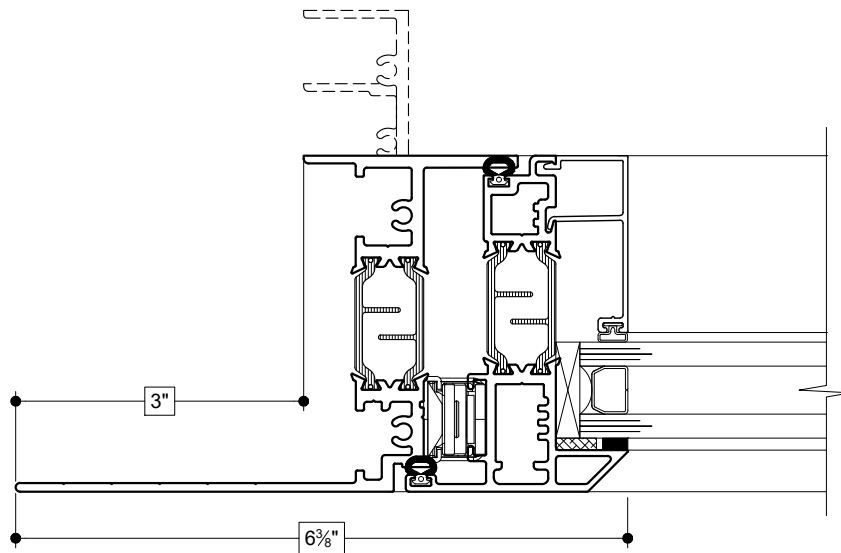
10/31/19



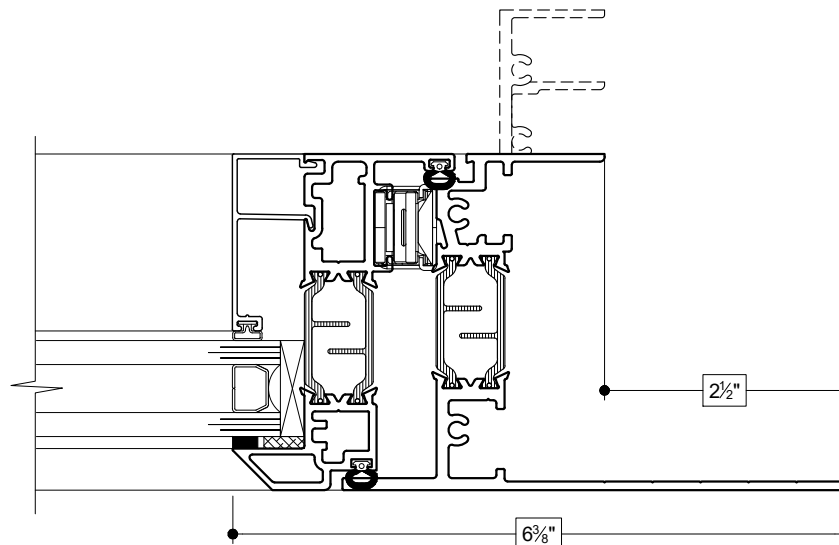
OPTIONAL 3" EXTERIOR FLANGE



OPTIONAL 3" EXTERIOR FLANGE

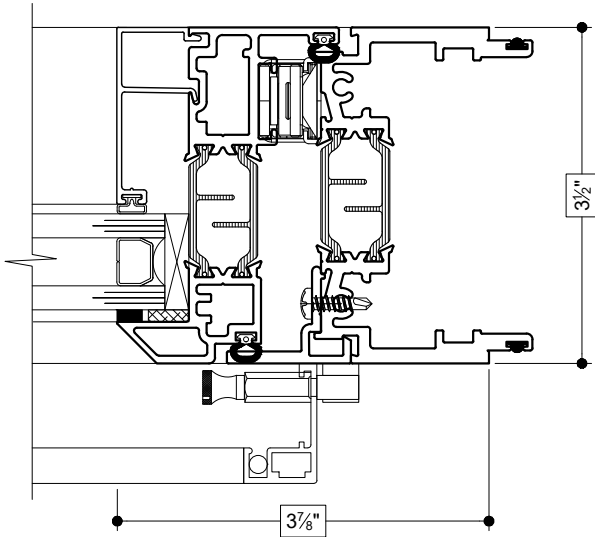


LEFT JAMB
(PROJECT-OUT)

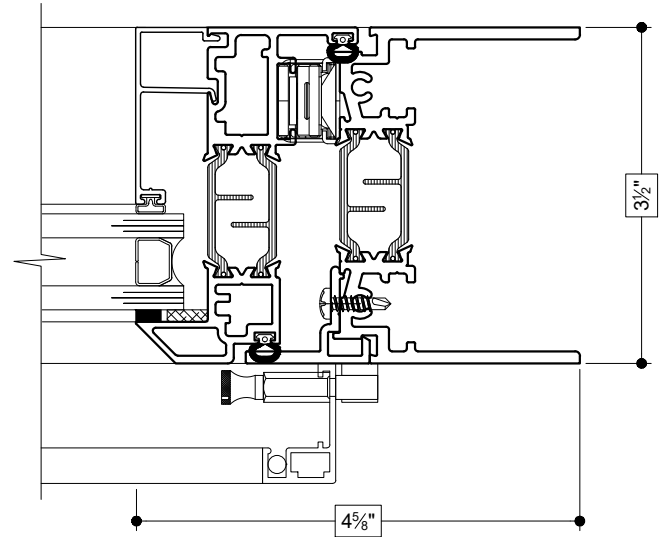


RIGHT JAMB
(PROJECT-IN)

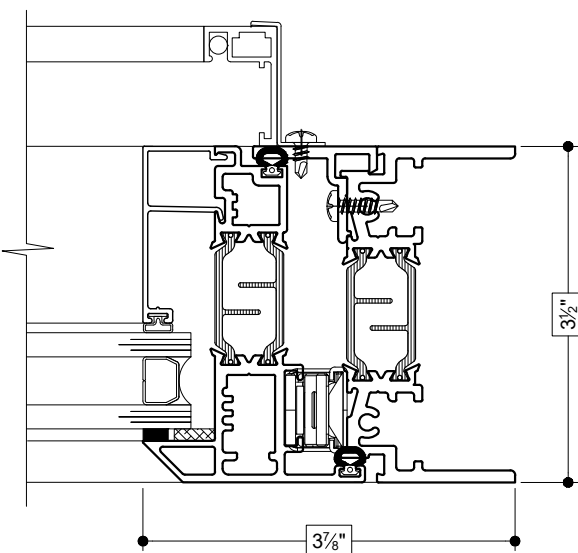
OPTIONAL FRAMES



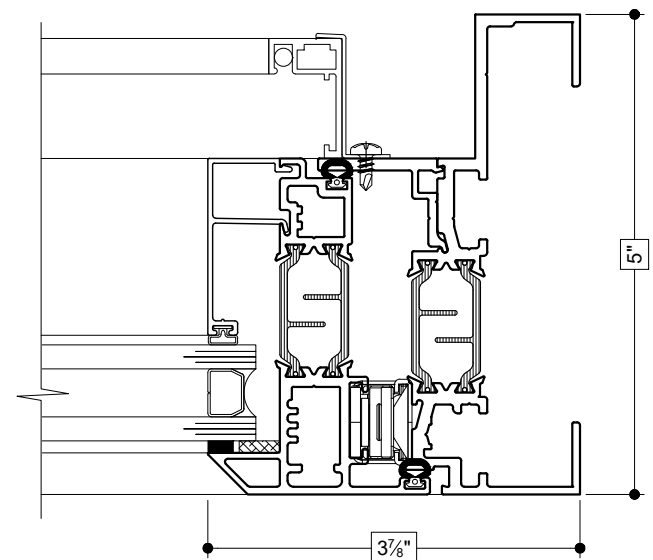
MALE RIGHT JAMB (HEAVY WALL)
(PROJECT-IN)



RIGHT JAMB (HEAVY WALL)
(PROJECT-IN)



RIGHT JAMB (HEAVY WALL)
(PROJECT-OUT)



RIGHT JAMB - RETURN LEG
(PROJECT-OUT)