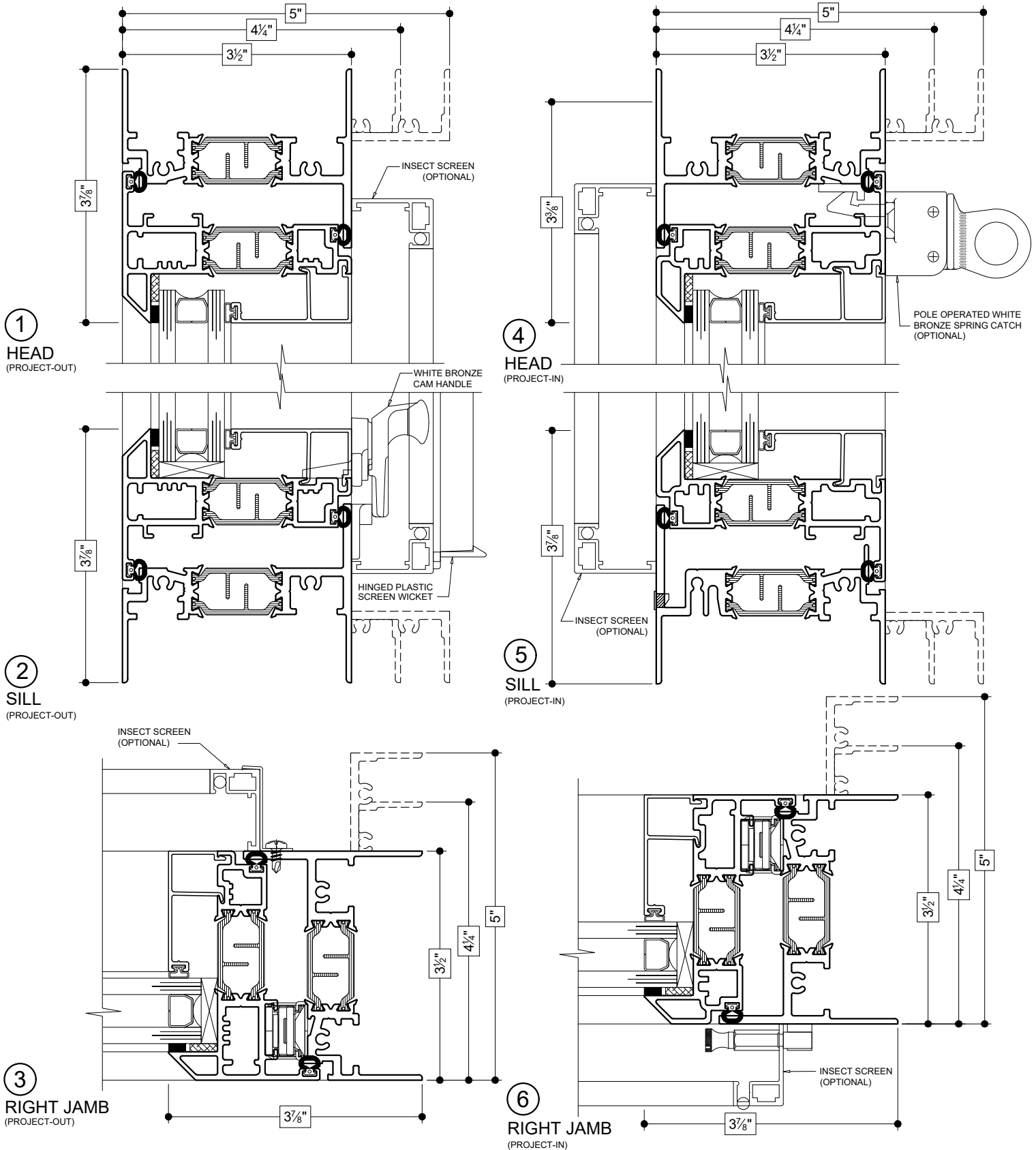


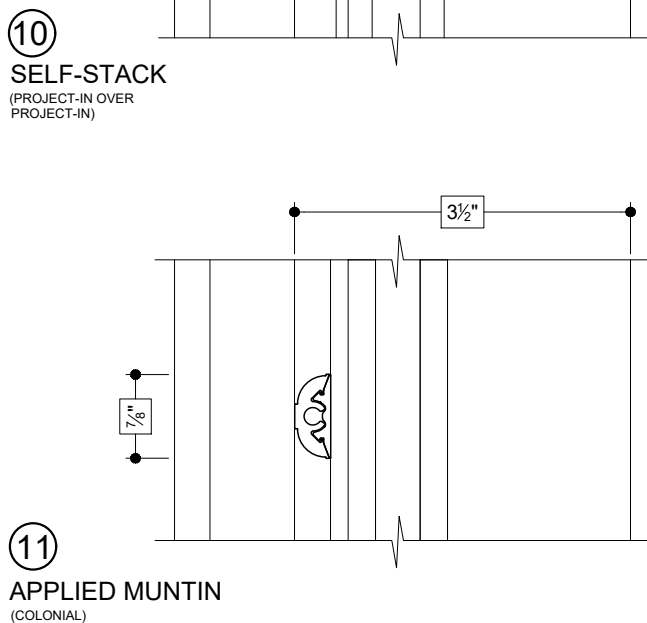
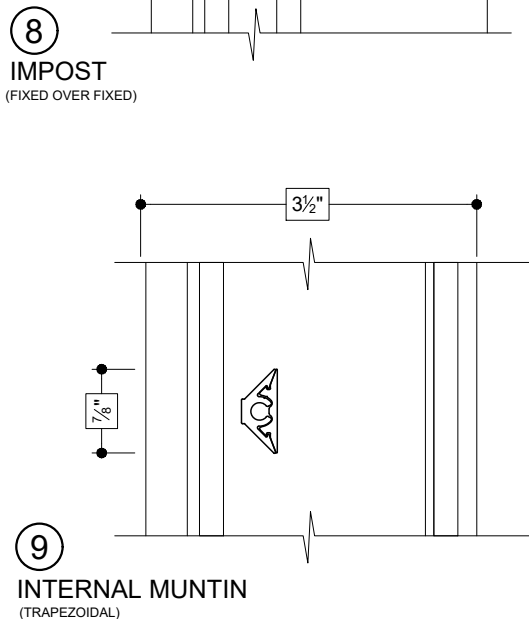
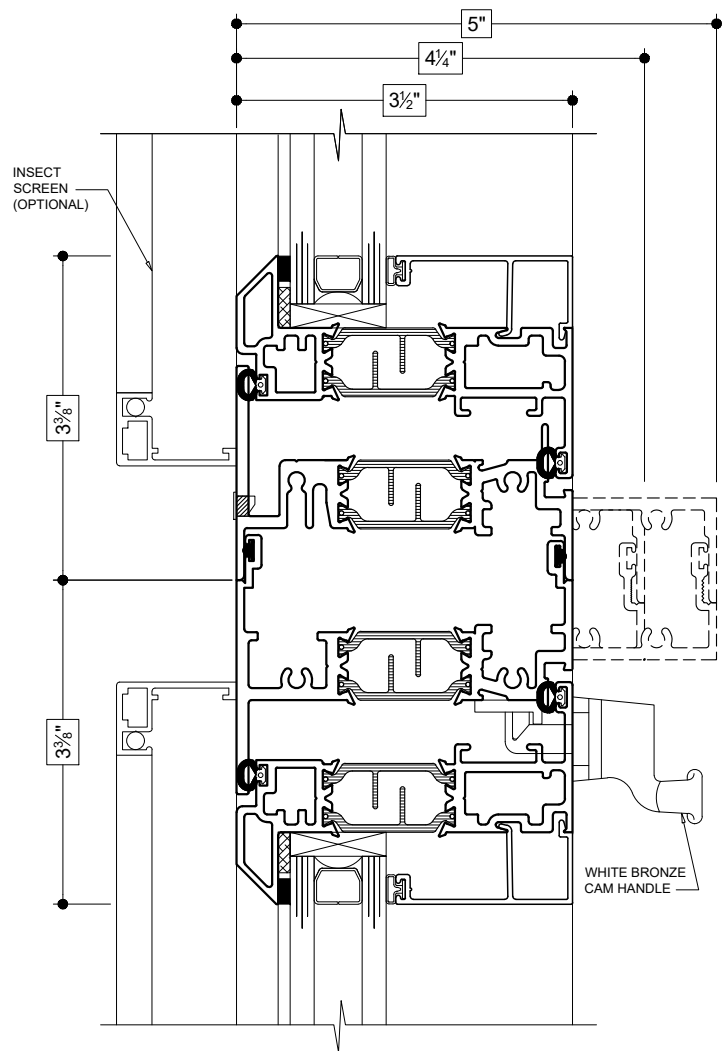
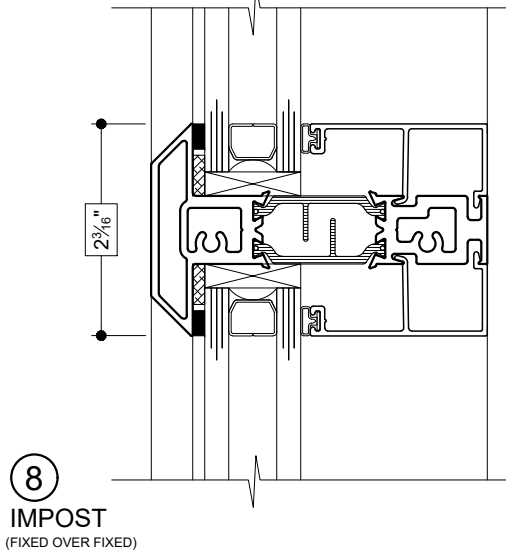
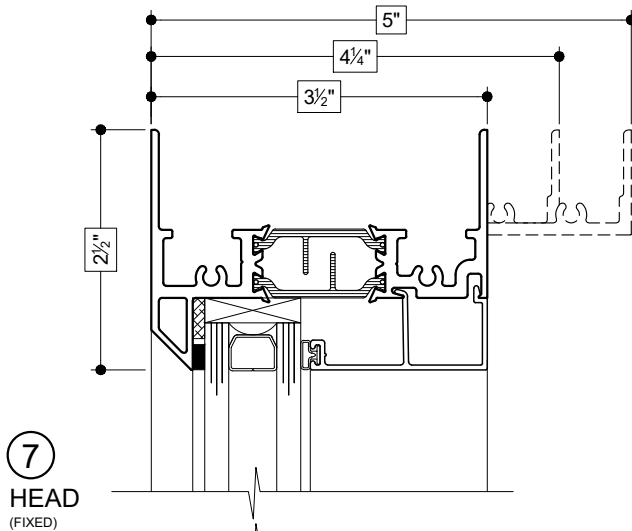
Details shown reflect the most commonly used configurations.  
Contact AWM for additional details and/or assistance.

10/31/19



Details shown reflect the most commonly used configurations.  
Contact AWM for additional details and/or assistance.

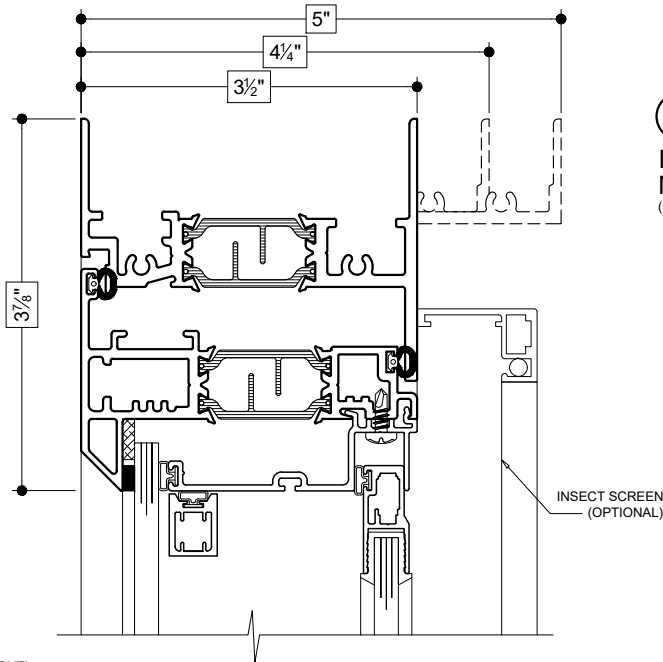
10/31/19



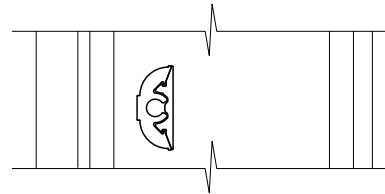
Details shown reflect the most commonly used configurations.  
Contact AWM for additional details and/or assistance.

10/31/19

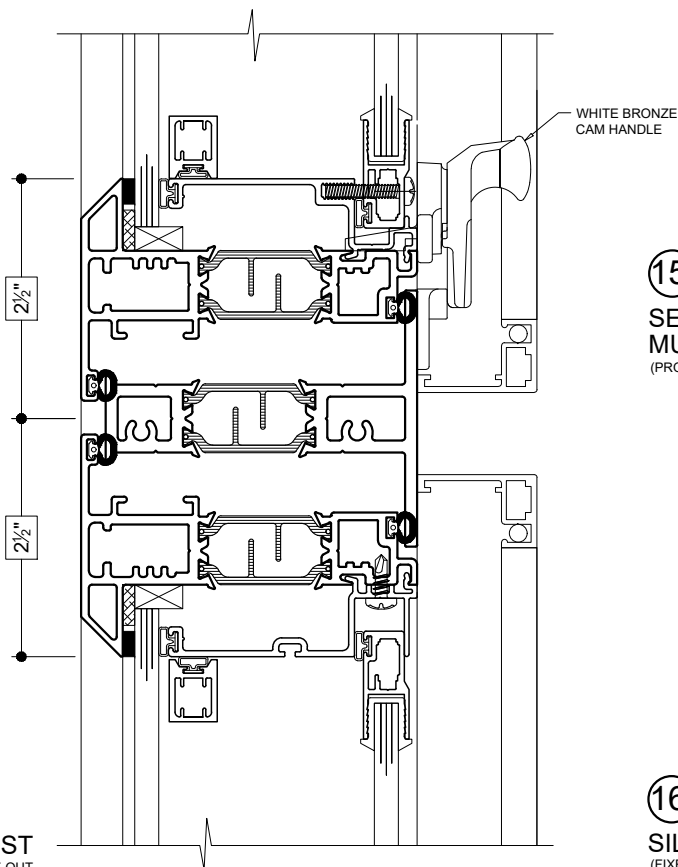
**12**  
**HEAD**  
(PROJECT-OUT)



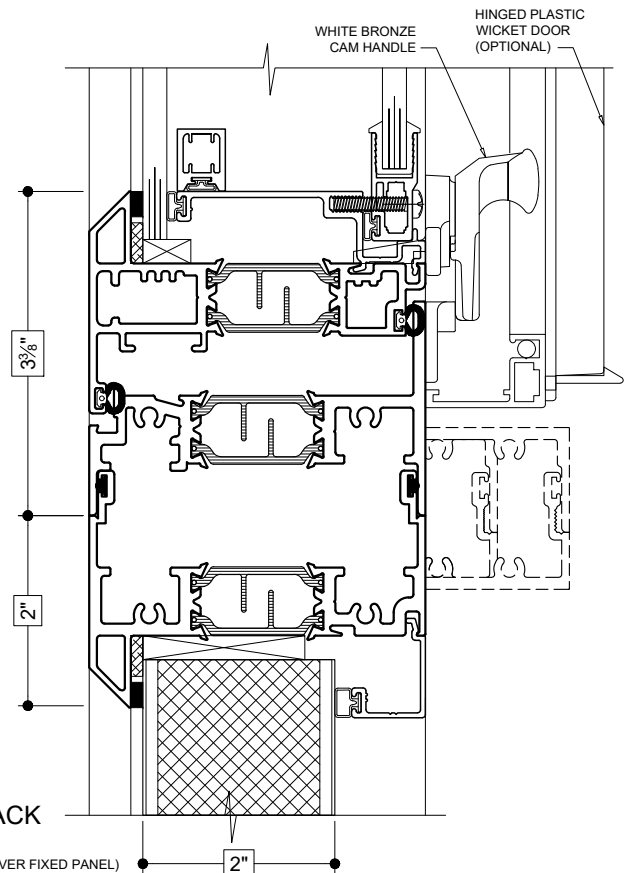
**14**  
**INTERNAL MUNTIN**  
(COLONIAL)



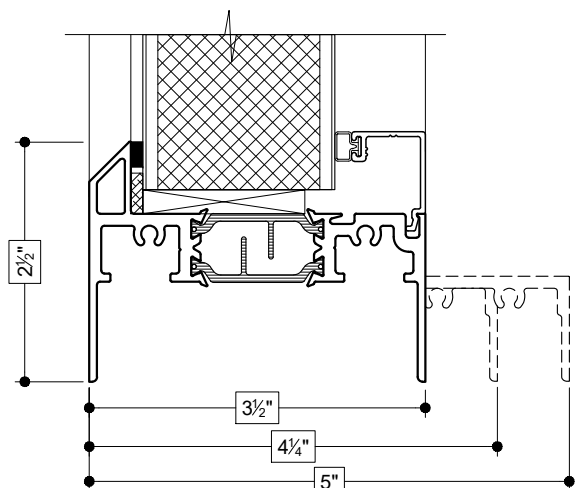
**13**  
**IMPOST**  
(PROJECT-OUT OVER PROJECT-OUT)



**15**  
**SELF-STACK MULLION**  
(PROJECT-OUT OVER FIXED PANEL)



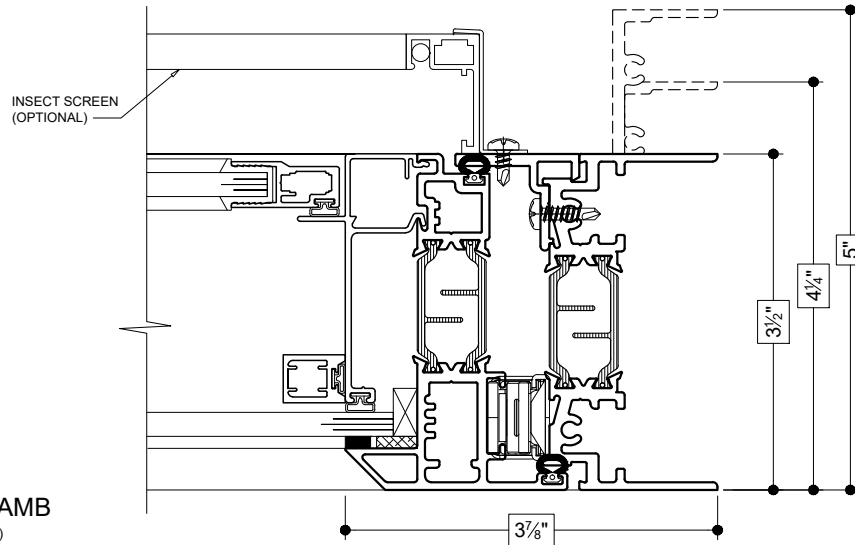
**16**  
**SILL**  
(FIXED PANEL)



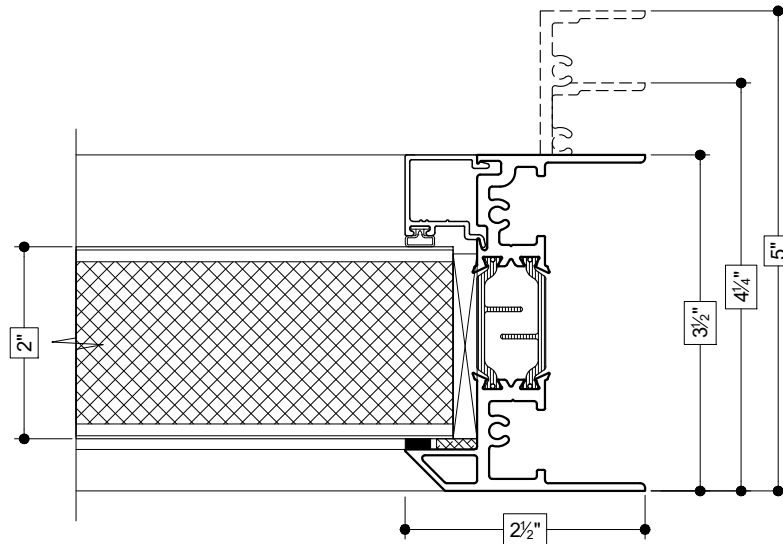
Details shown reflect the most commonly used configurations.  
Contact AWM for additional details and/or assistance.

10/31/19

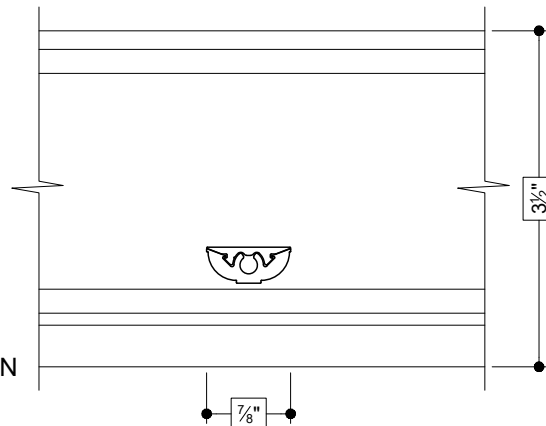
**17**  
**RIGHT JAMB**  
(PROJECT-OUT)



**18**  
**RIGHT JAMB**  
(FIXED PANEL)



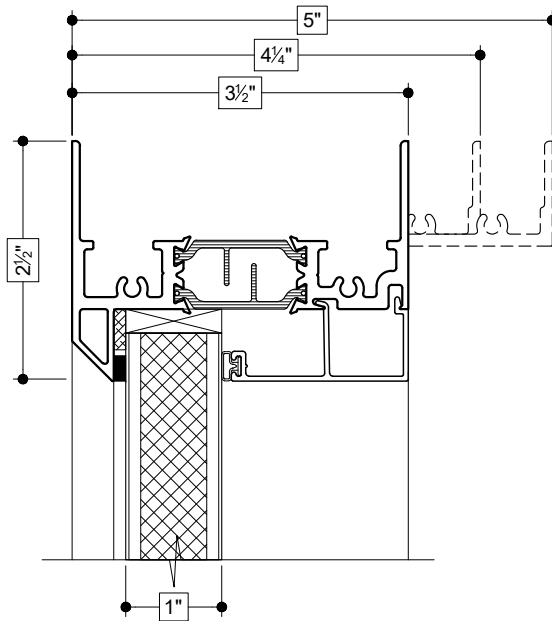
**19**  
**INTERNAL MUNTIN**  
(COLONIAL)



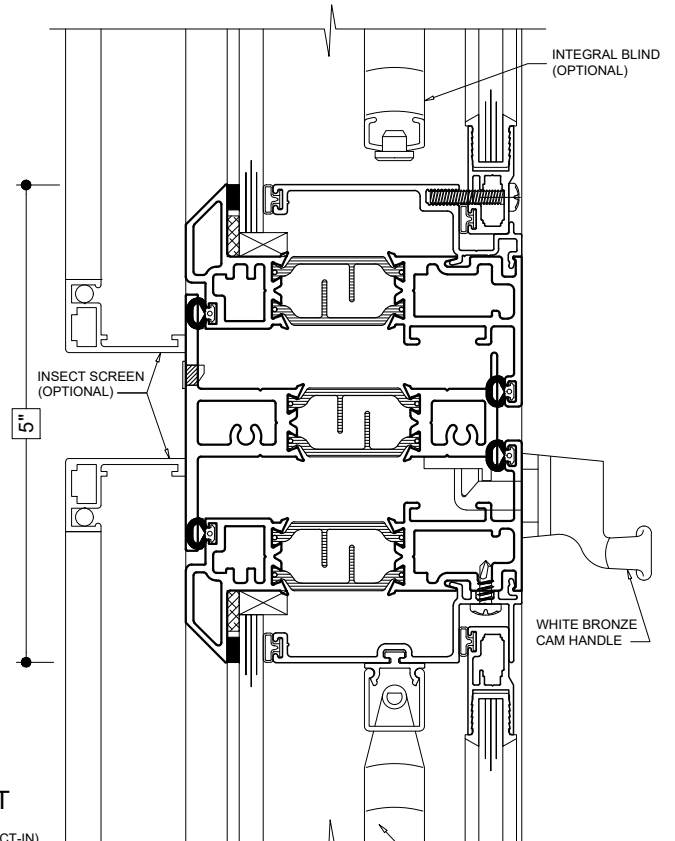
Details shown reflect the most commonly used configurations.  
Contact AWM for additional details and/or assistance.

10/31/19

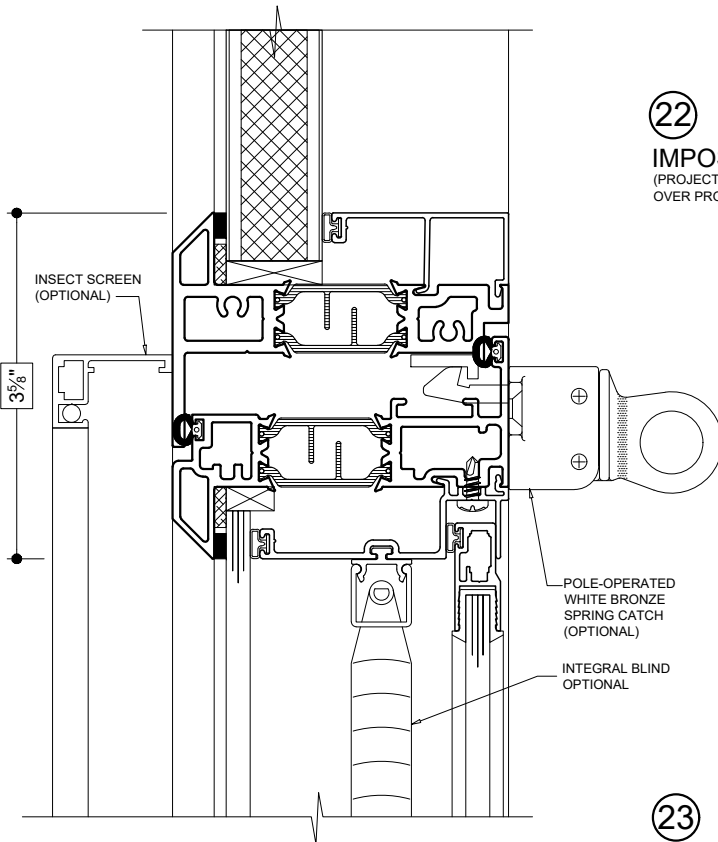
**20**  
**HEAD**  
(FIXED PANEL)



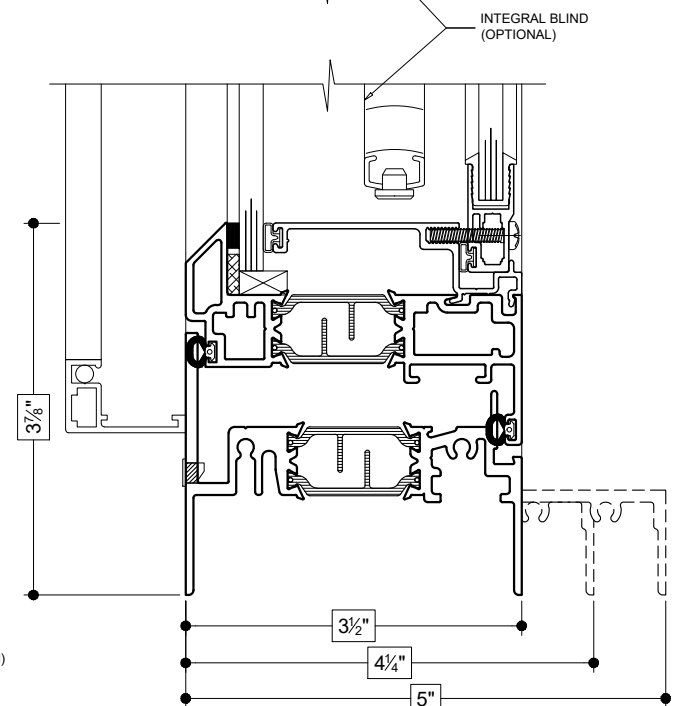
**22**  
**IMPOST**  
(PROJECT-IN  
OVER PROJECT-IN)



**21**  
**IMPOST**  
(FIXED PANEL OVER PROJECT-IN)

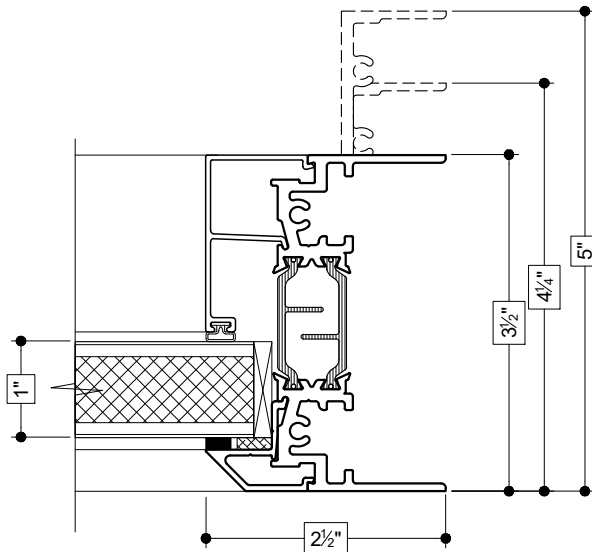


**23**  
**SILL**  
(PROJECT-IN)

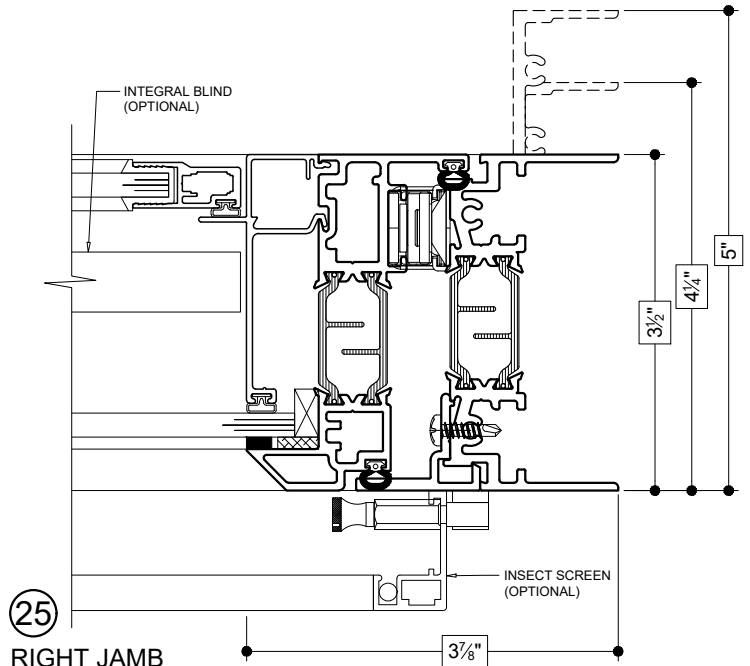


Details shown reflect the most commonly used configurations.  
Contact AWM for additional details and/or assistance.

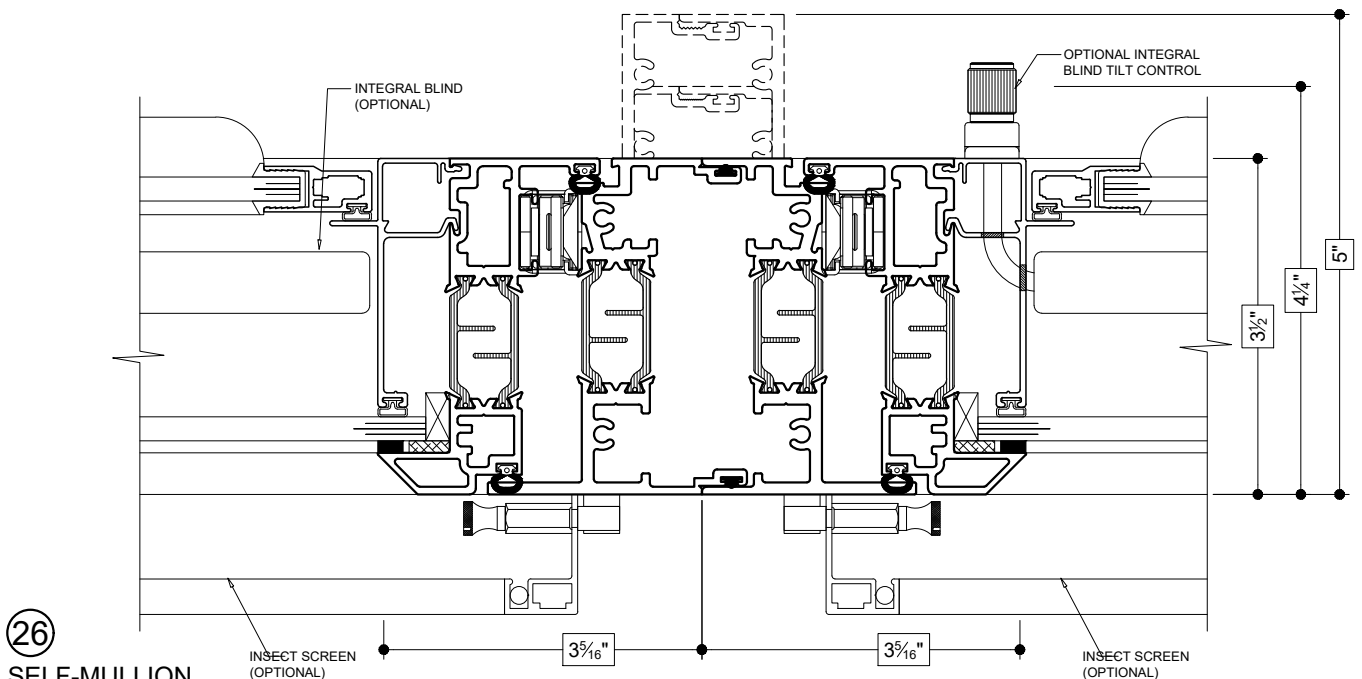
10/31/19



**(24)**  
**RIGHT JAMB**  
(FIXED PANEL)



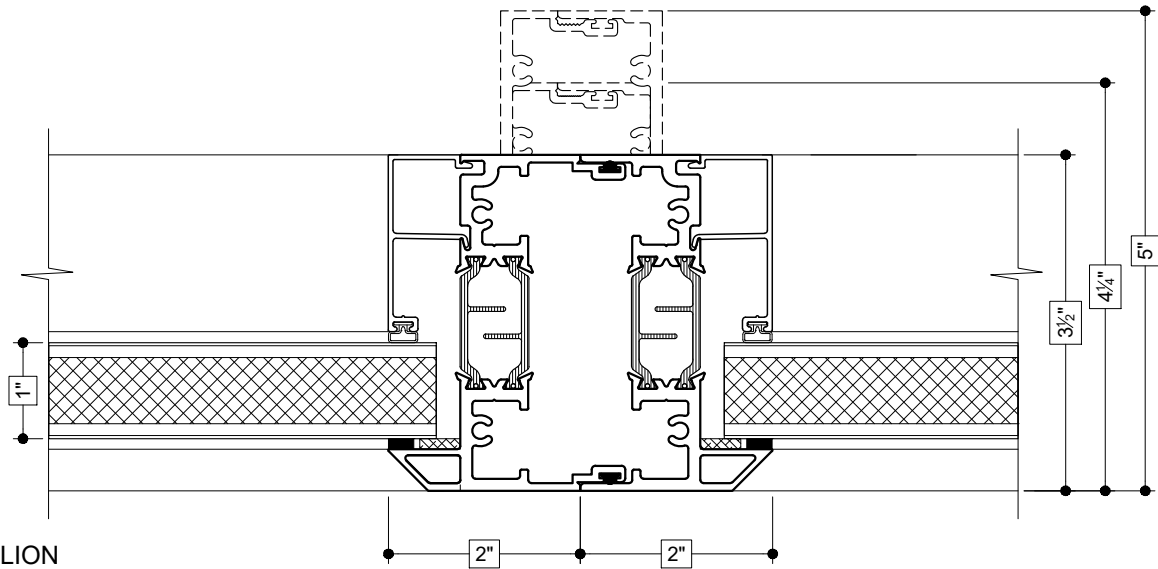
**(25)**  
**RIGHT JAMB**  
(PROJECT-IN)



**(26)**  
**SELF-MULLION**  
(PROJECT-IN TO PROJECT-IN)

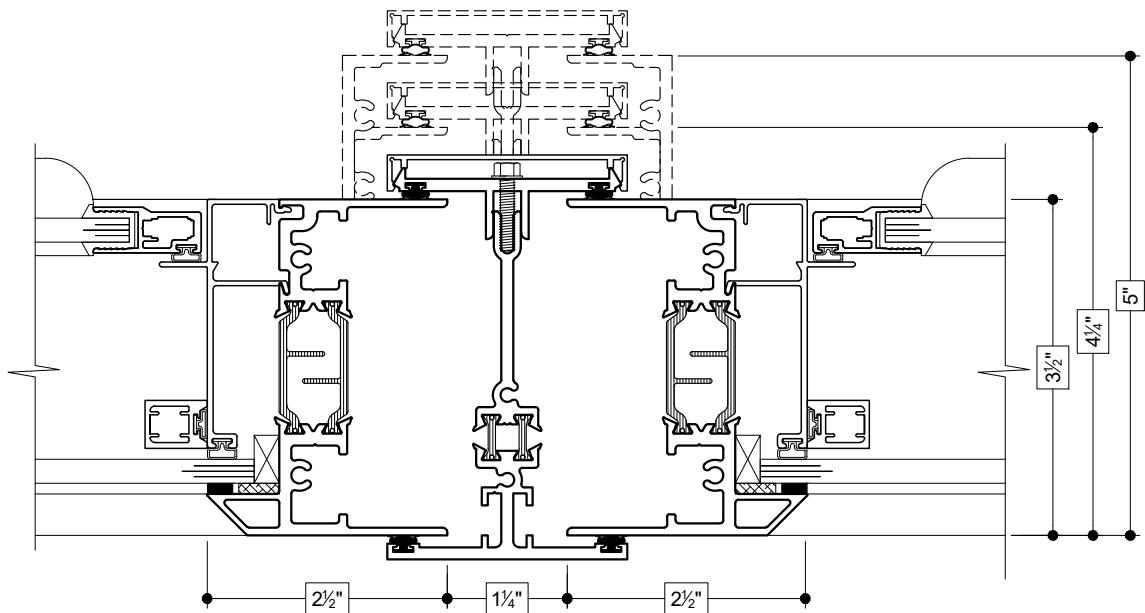
27

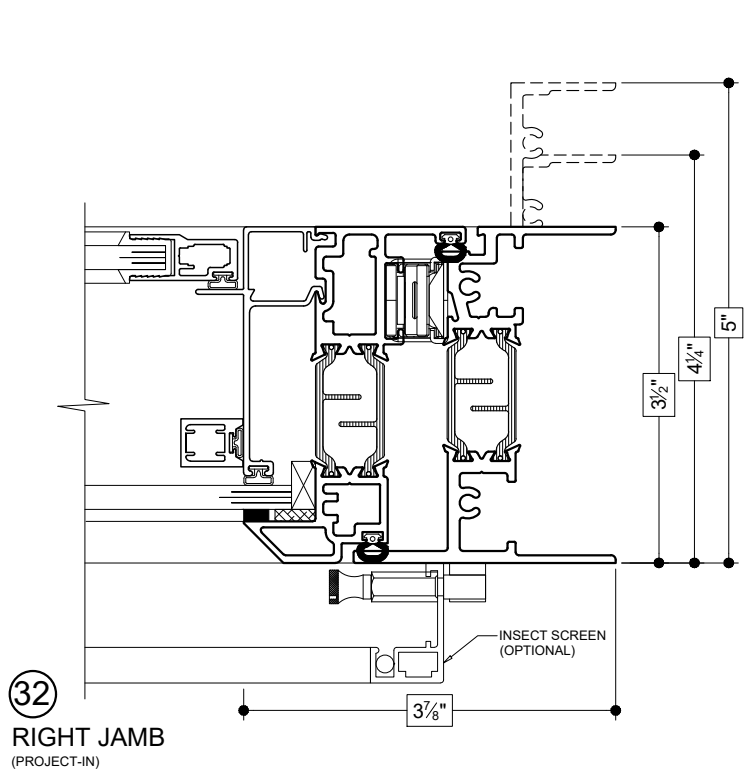
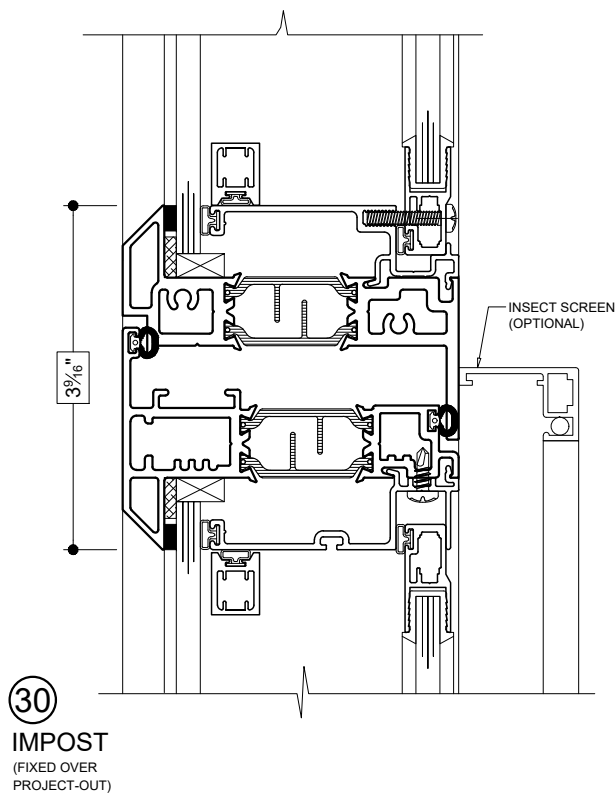
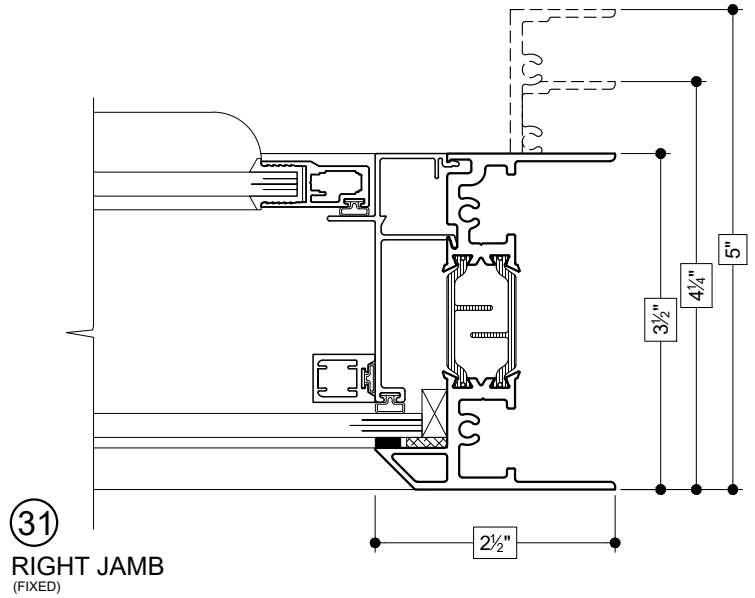
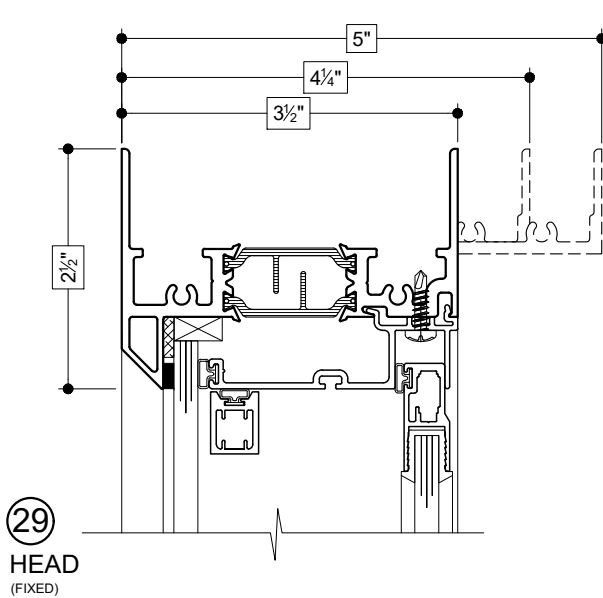
**SELF-MULLION**  
(FIXED PANEL TO FIXED PANEL)

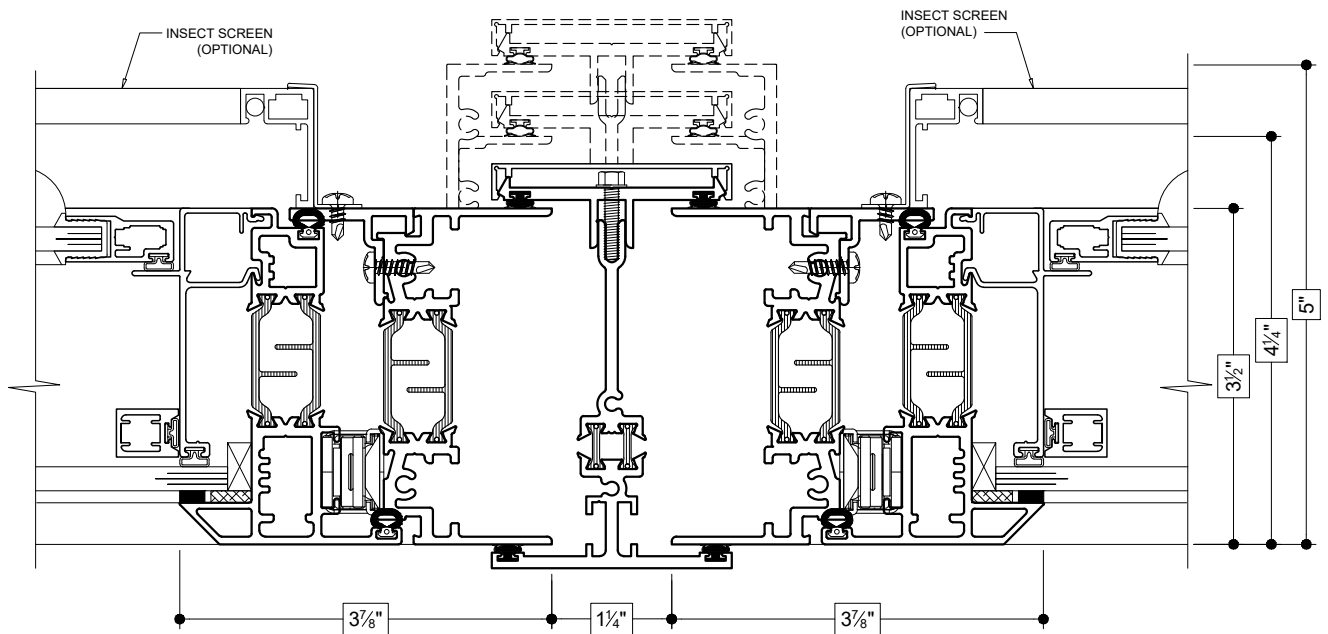


28

**3-PIECE MULLION**  
(FIXED TO FIXED)

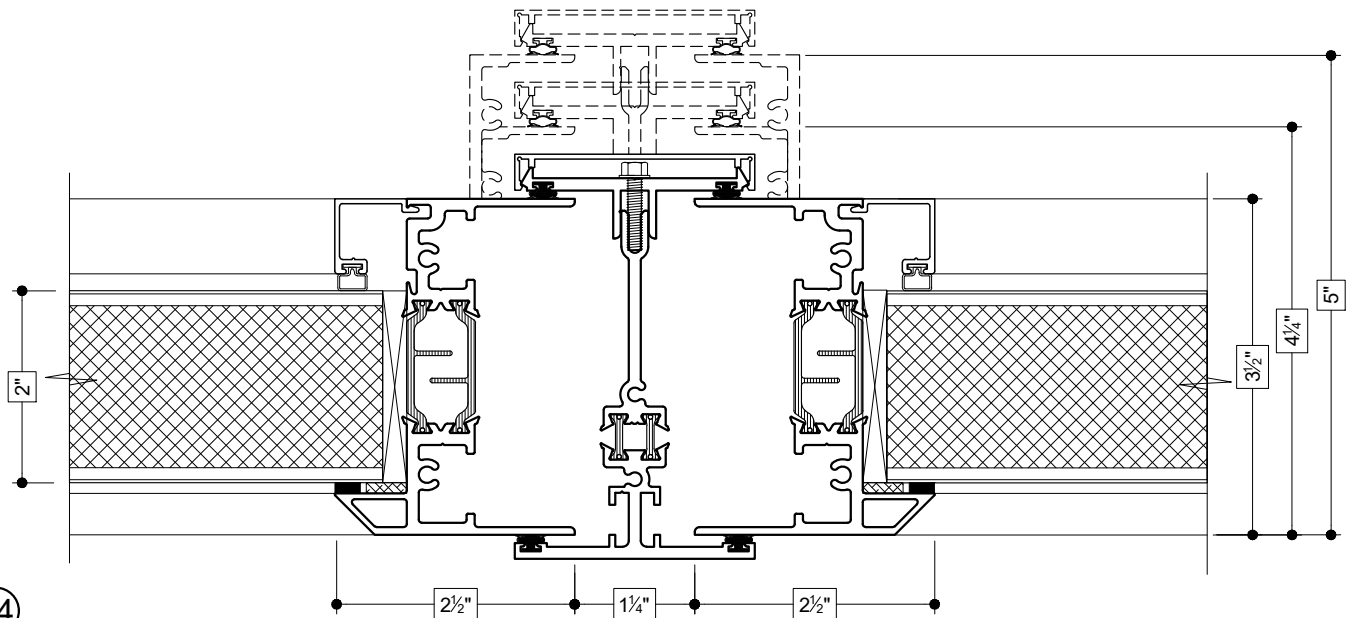






33

**3-PIECE MULLION**  
(PROJECT-OUT TO PROJECT-OUT)

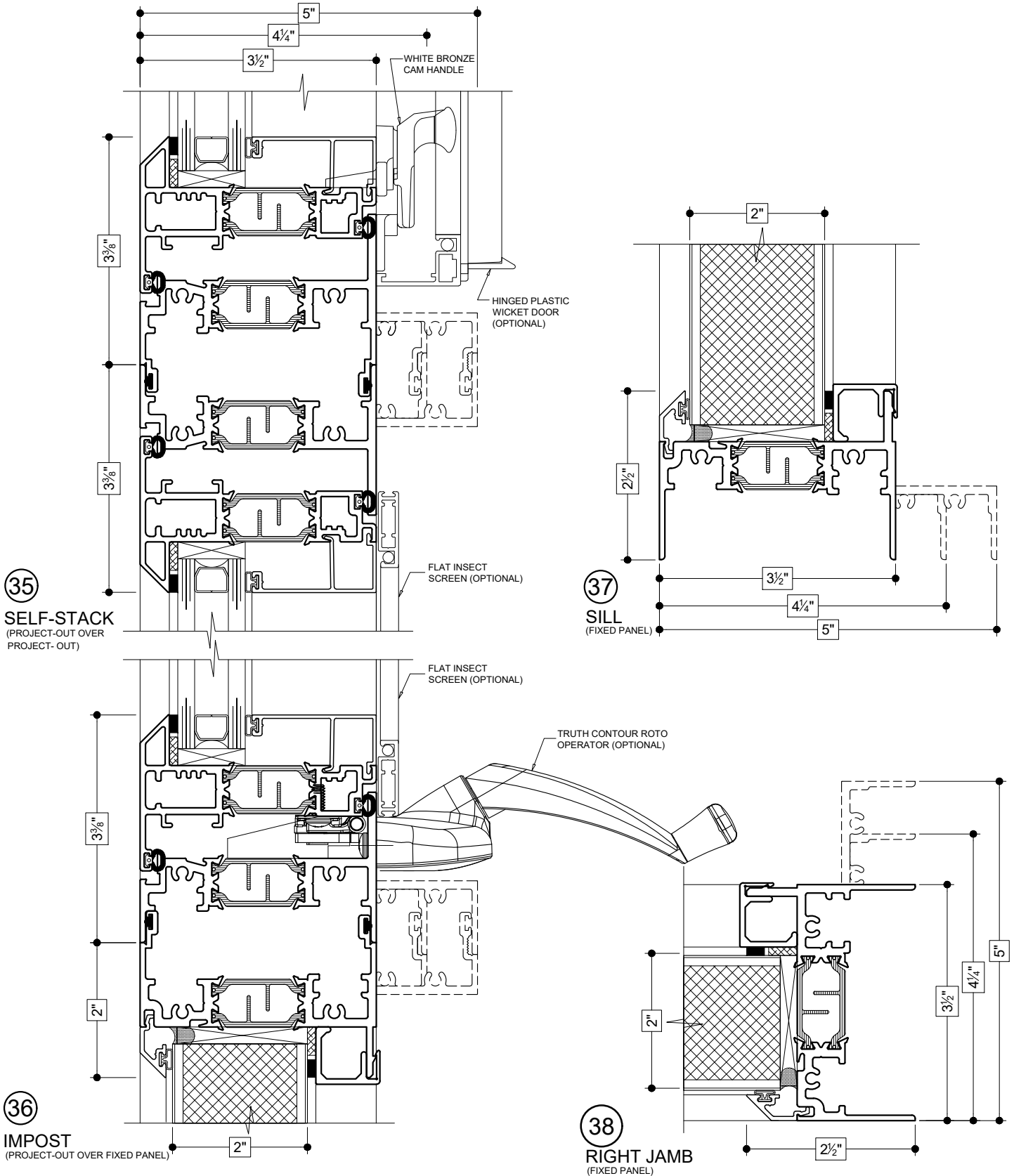


34

**3-PIECE MULLION**  
(FIXED PANEL TO FIXED PANEL)

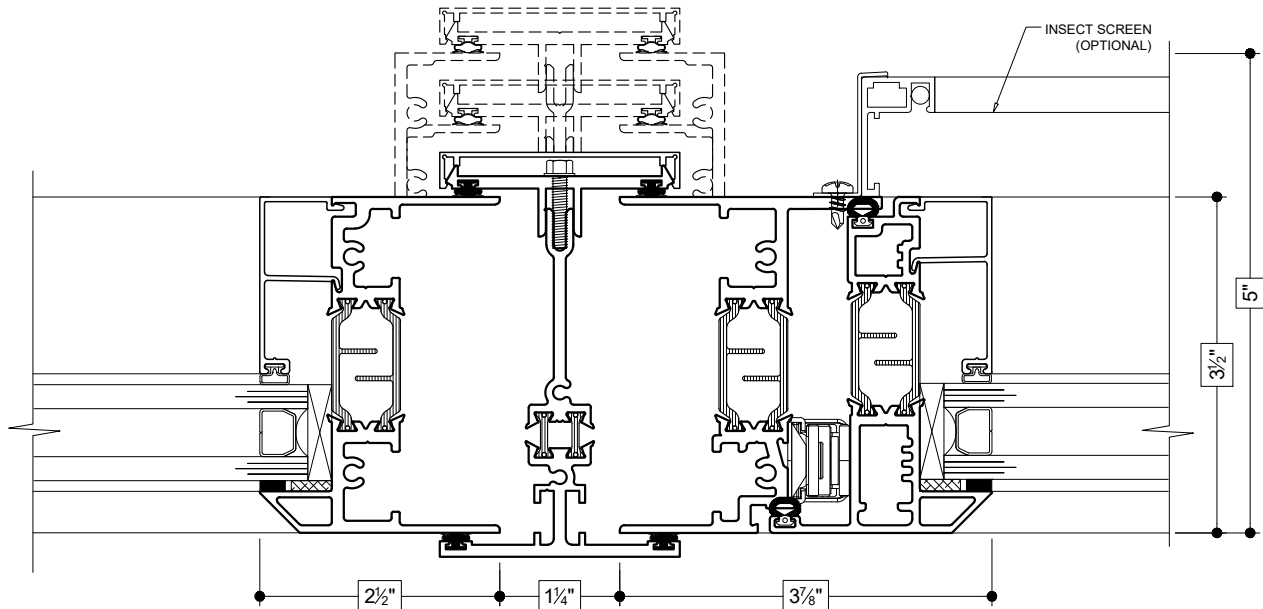
Details shown reflect the most commonly used configurations.  
Contact AWM for additional details and/or assistance.

10/31/19



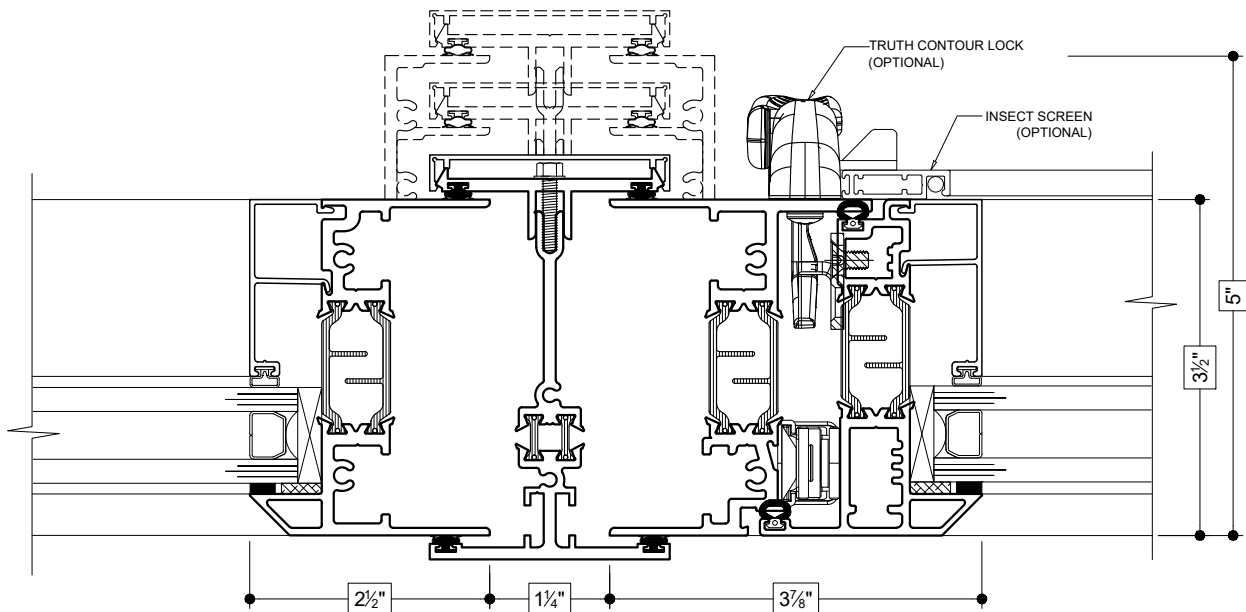
Details shown reflect the most commonly used configurations.  
Contact AWM for additional details and/or assistance.

10/31/19



39

**3-PIECE MULLION**  
(FIXED TO PROJECT-OUT)

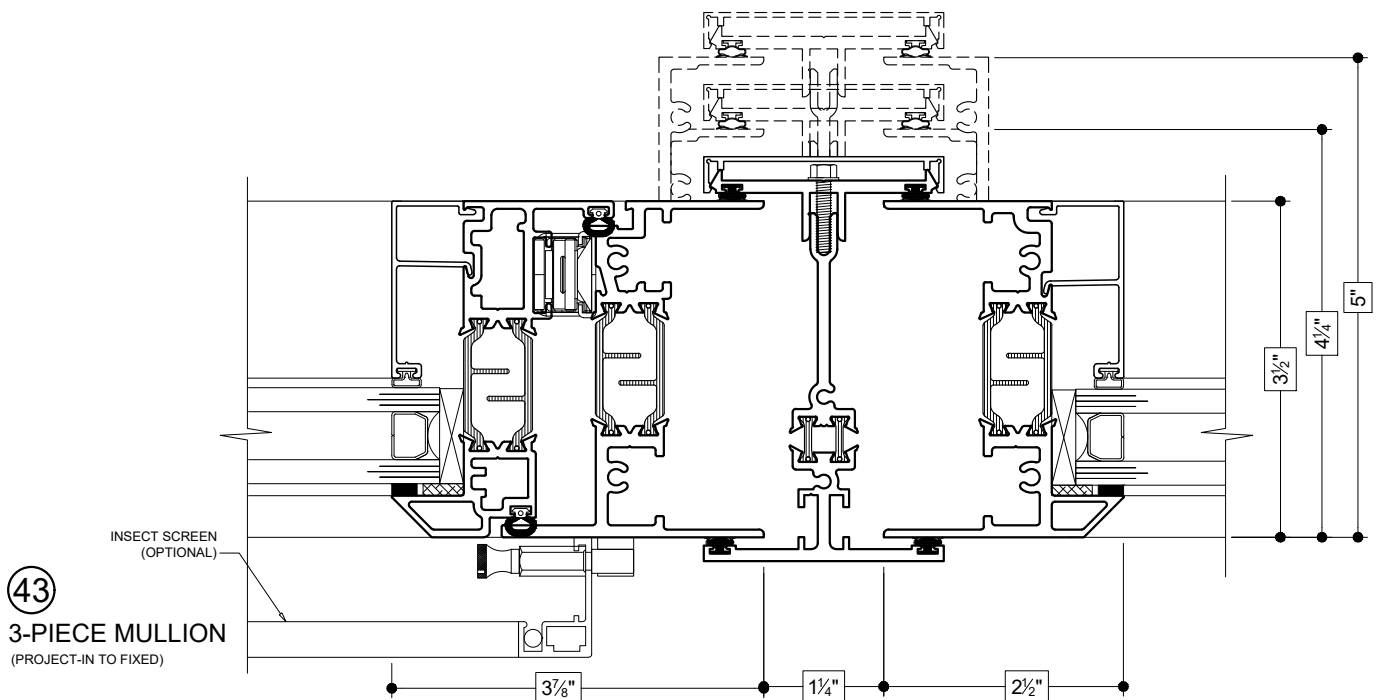
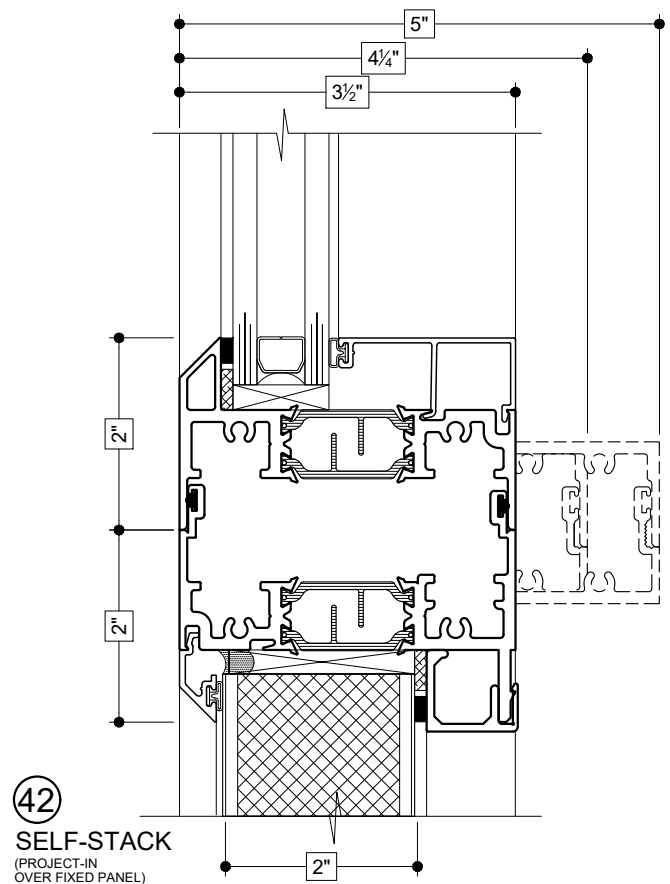
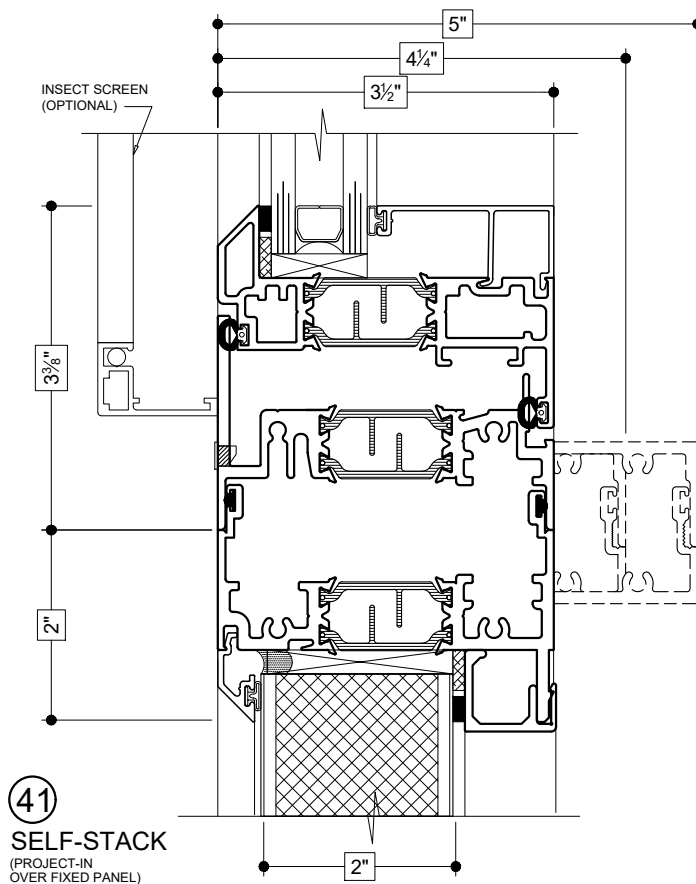


40

**3-PIECE MULLION**  
(FIXED TO PROJECT-OUT)

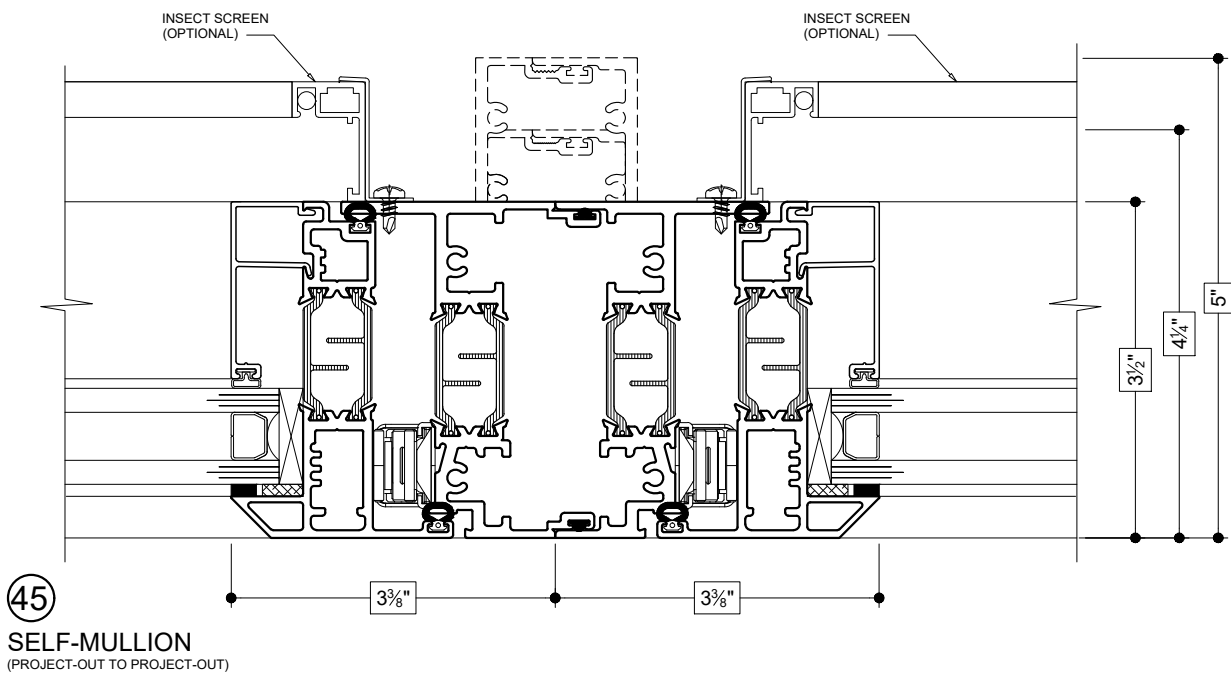
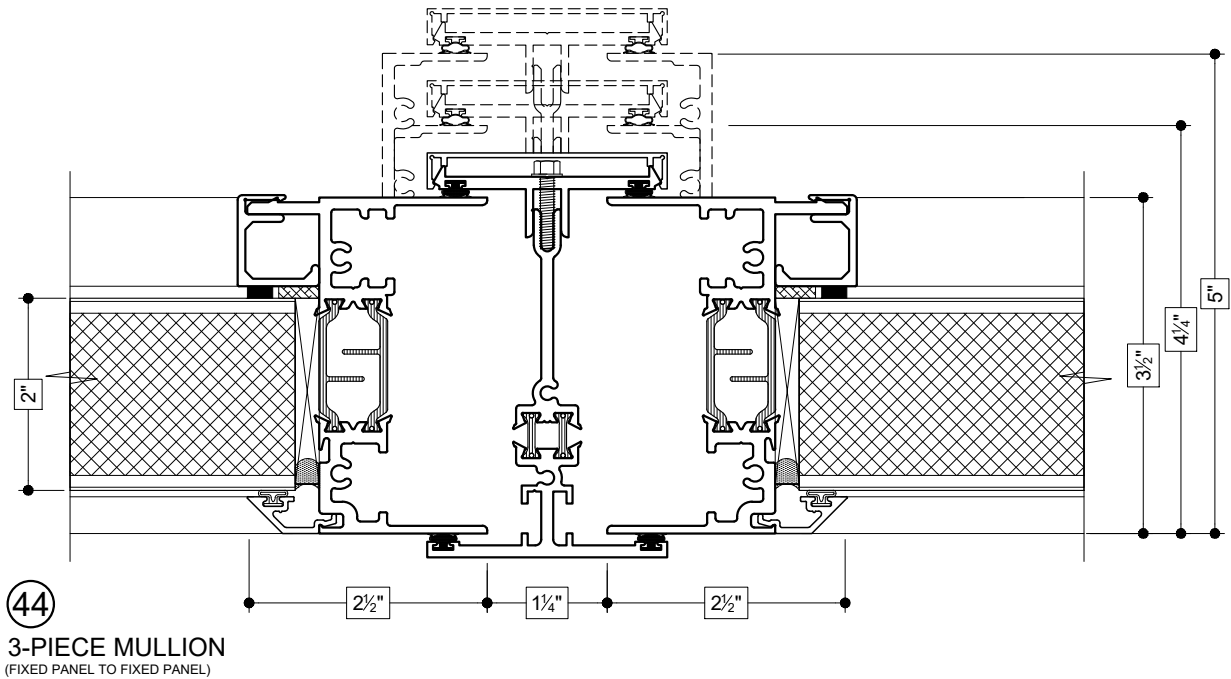
Details shown reflect the most commonly used configurations.  
Contact AWM for additional details and/or assistance.

10/31/19



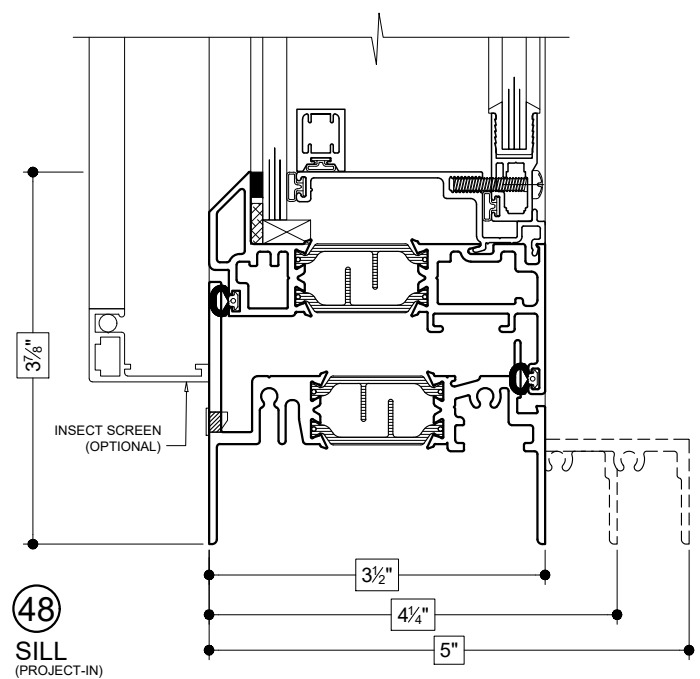
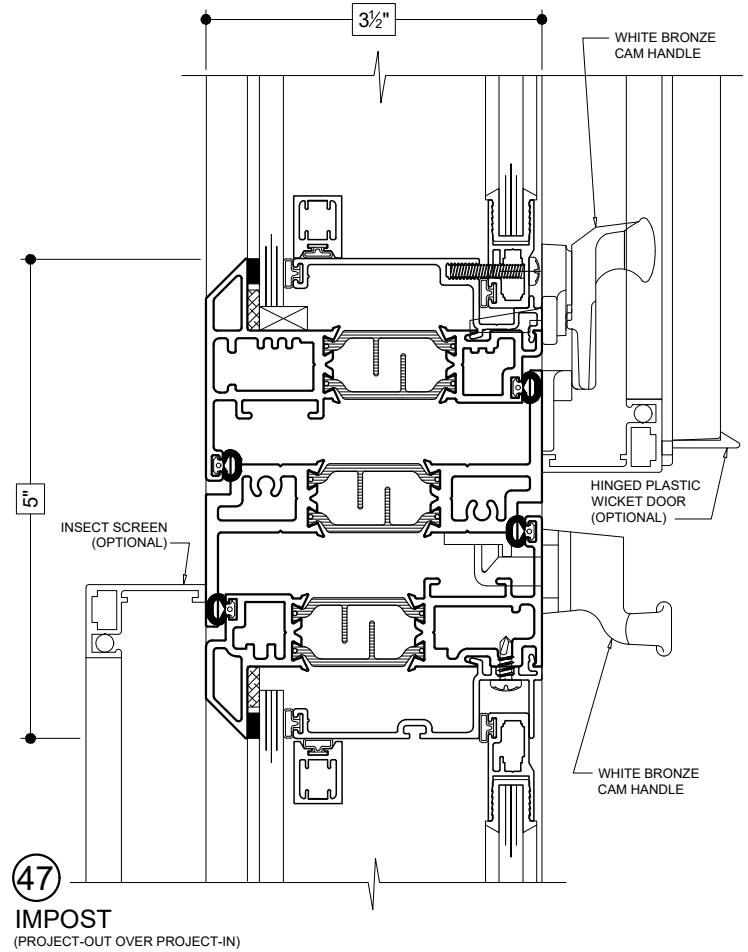
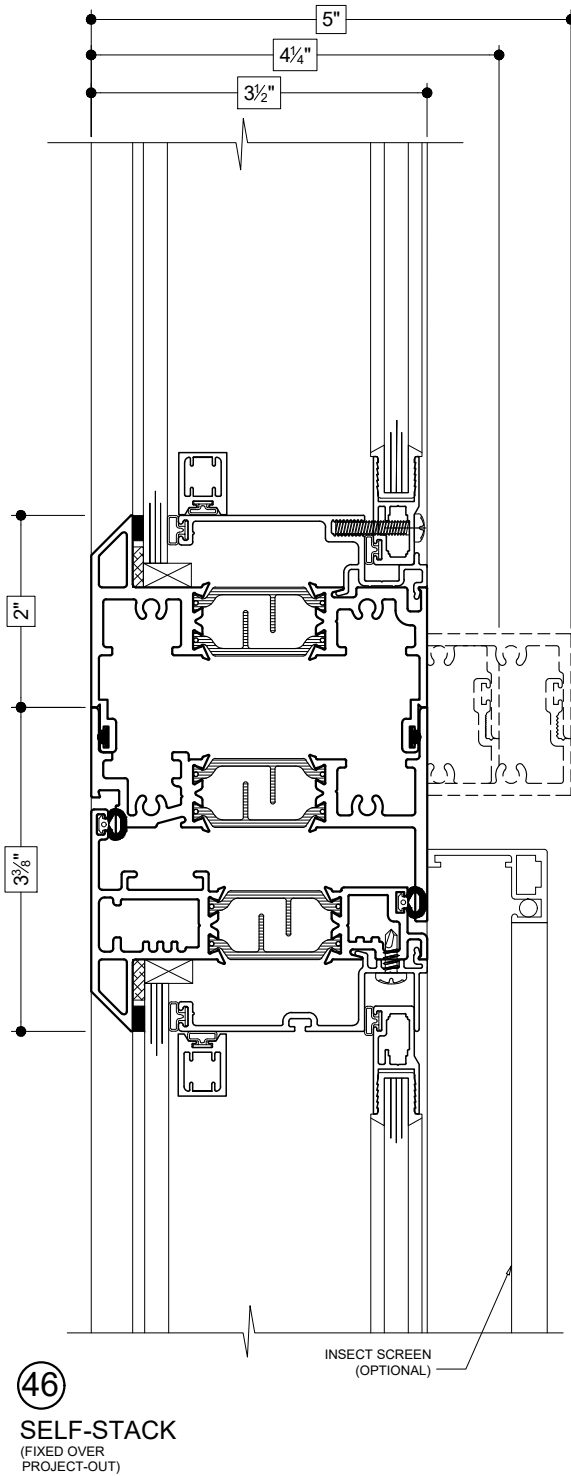
Details shown reflect the most commonly used configurations.  
Contact AWM for additional details and/or assistance.

10/31/19

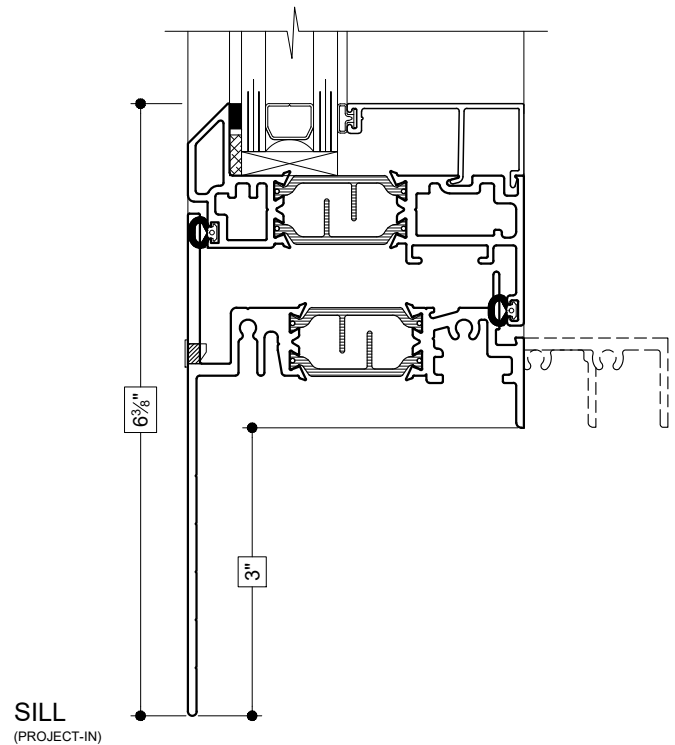
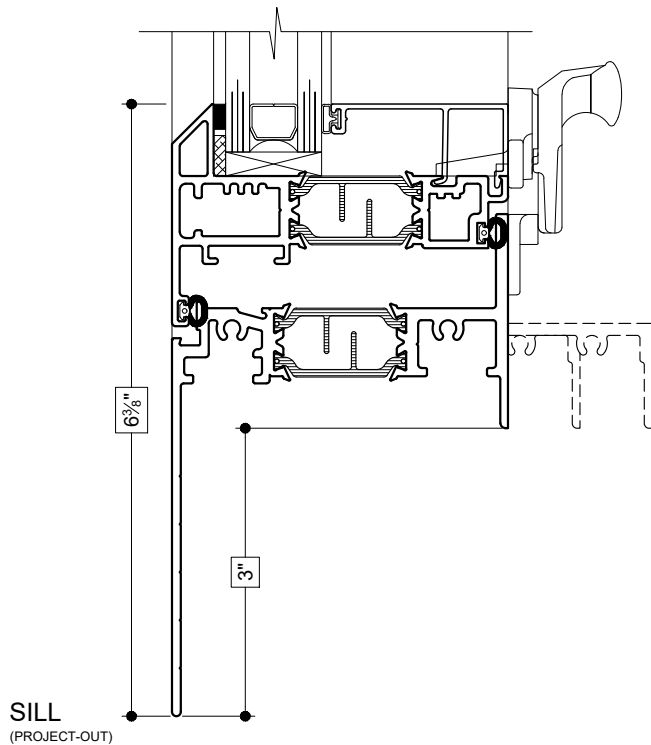
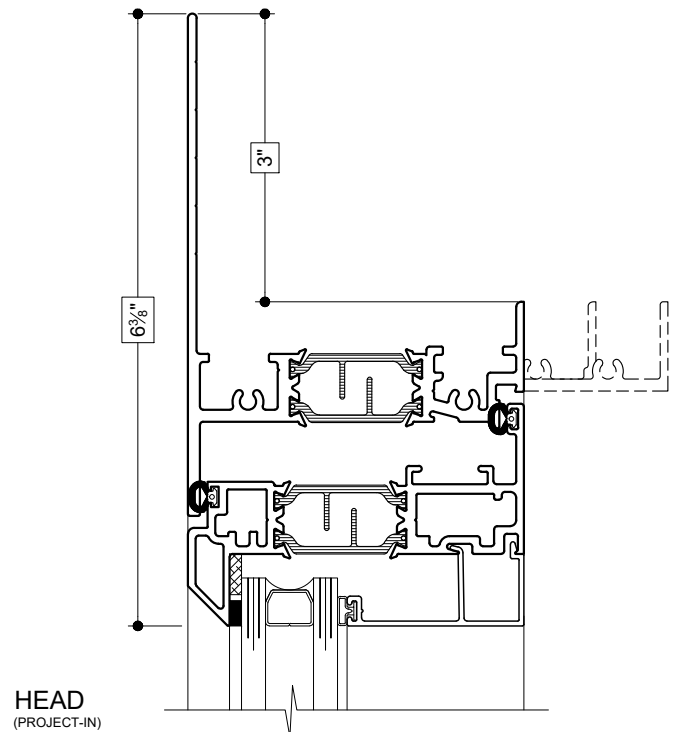
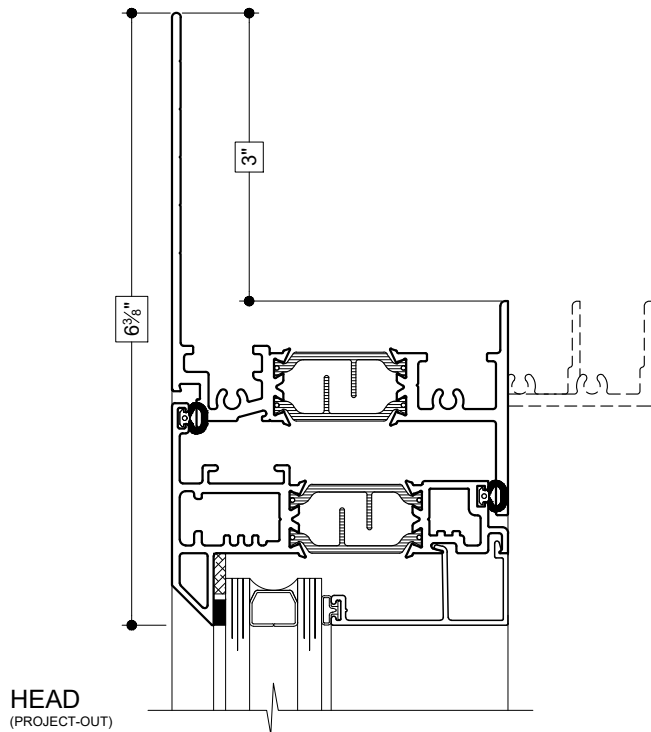


Details shown reflect the most commonly used configurations.  
Contact AWM for additional details and/or assistance.

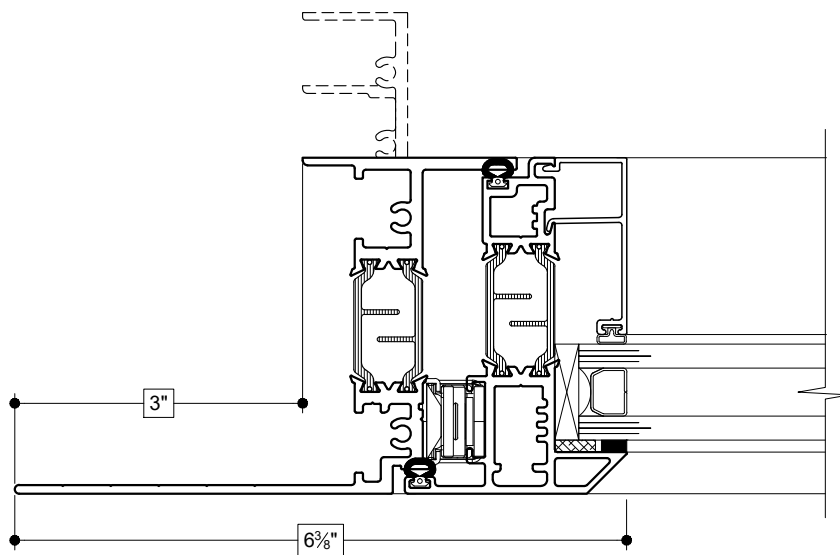
10/31/19



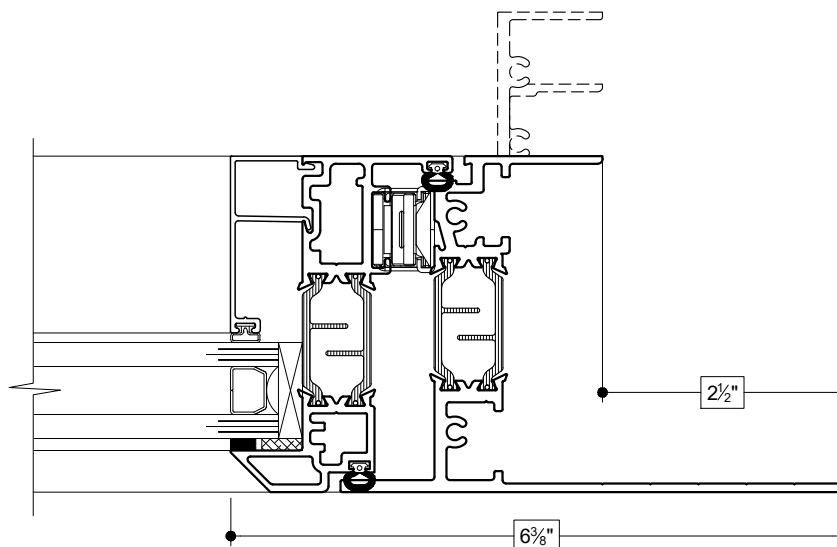
**OPTIONAL 3" EXTERIOR FLANGE**



**OPTIONAL 3" EXTERIOR FLANGE**

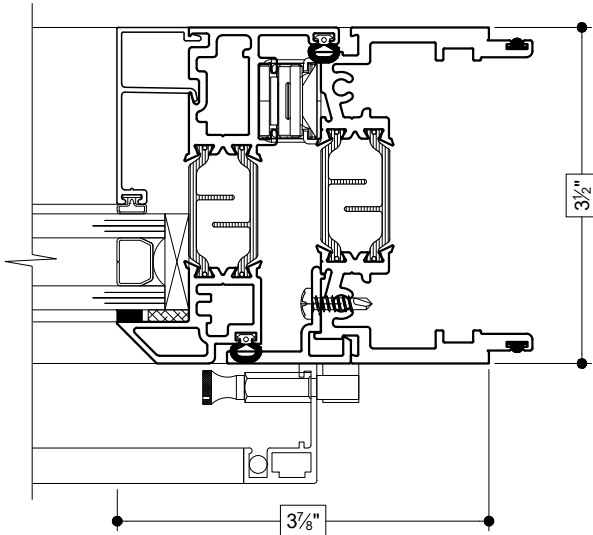


**LEFT JAMB**  
(PROJECT-OUT)

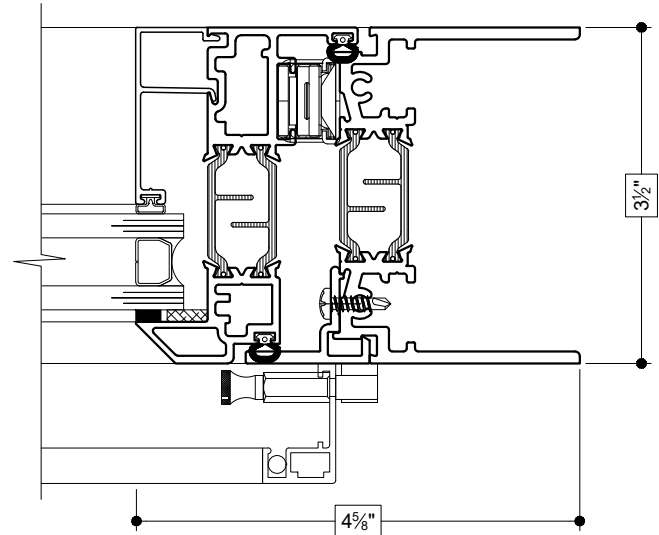


**RIGHT JAMB**  
(PROJECT-IN)

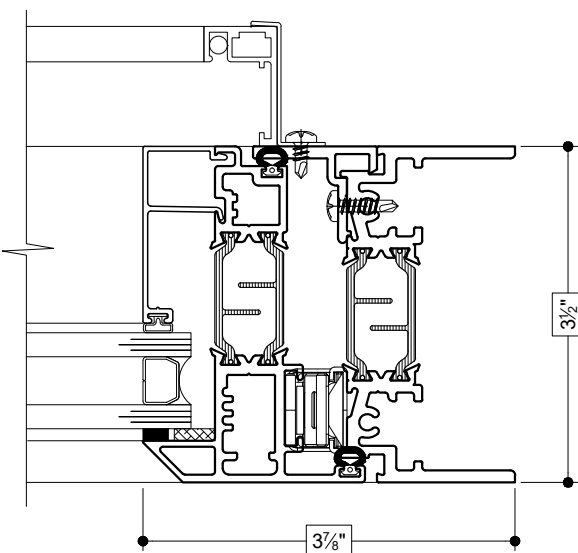
### OPTIONAL FRAMES



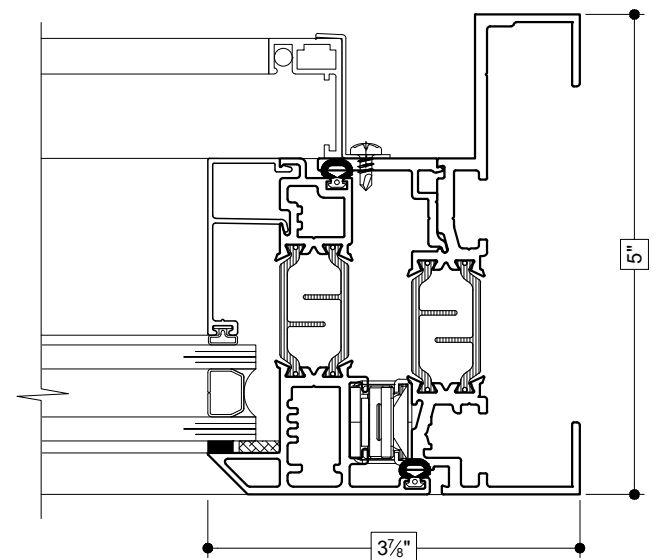
**MALE RIGHT JAMB (HEAVY WALL)**  
(PROJECT-IN)



**RIGHT JAMB (HEAVY WALL)**  
(PROJECT-IN)



**RIGHT JAMB (HEAVY WALL)**  
(PROJECT-OUT)



**RIGHT JAMB - RETURN LEG**  
(PROJECT-OUT)