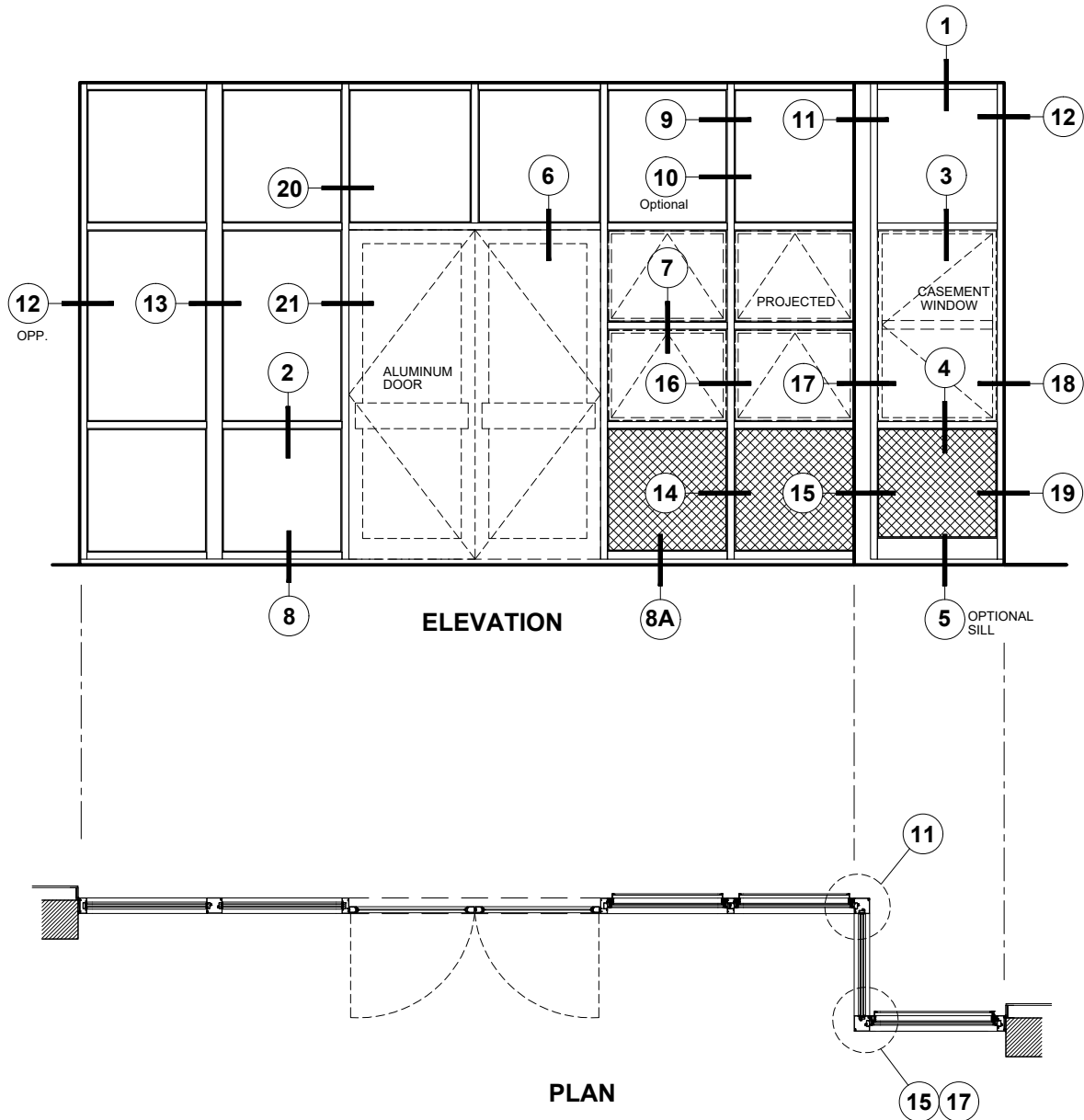


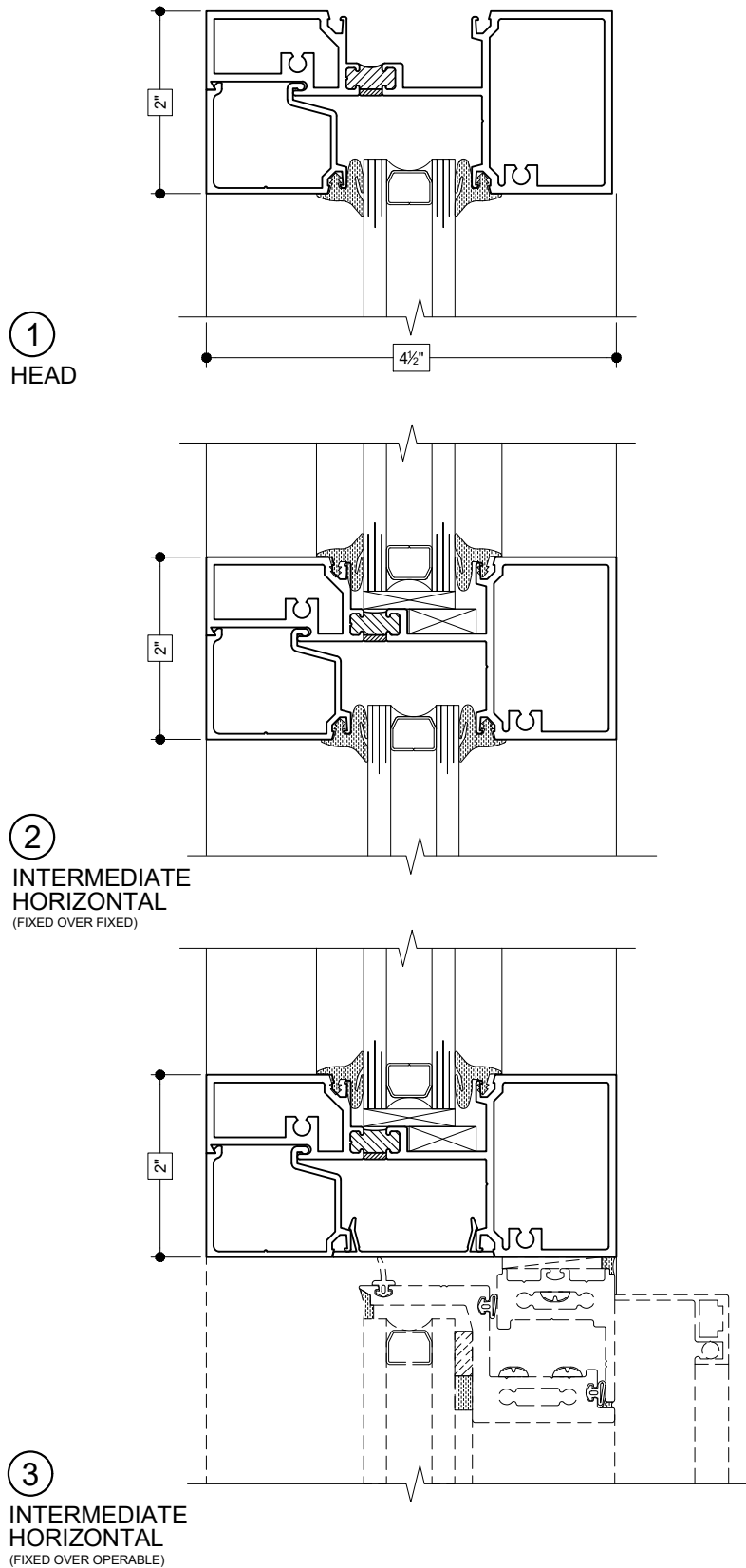
Details shown reflect the most commonly used configurations.
 Contact AWM for additional details and/or assistance.

10/08/19



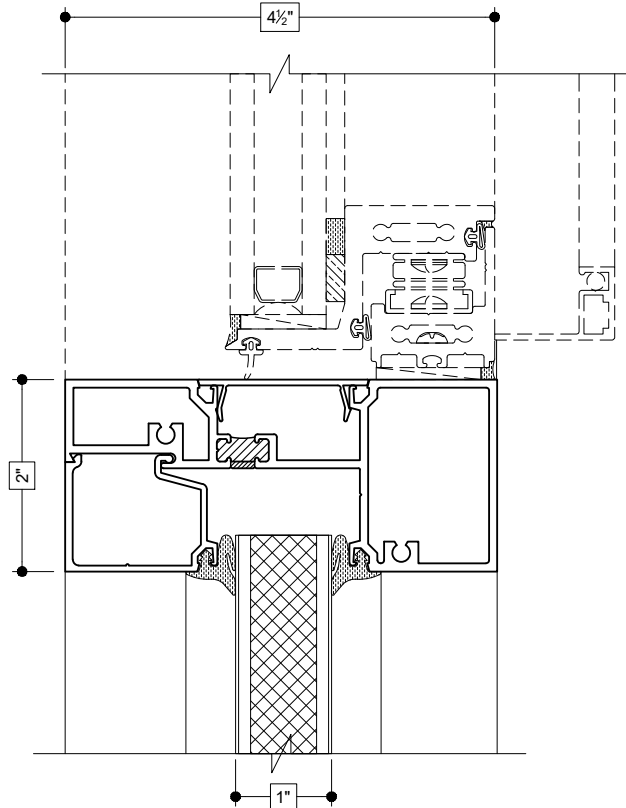
Details shown reflect the most commonly used configurations.
 Contact AWM for additional details and/or assistance.

10/08/19

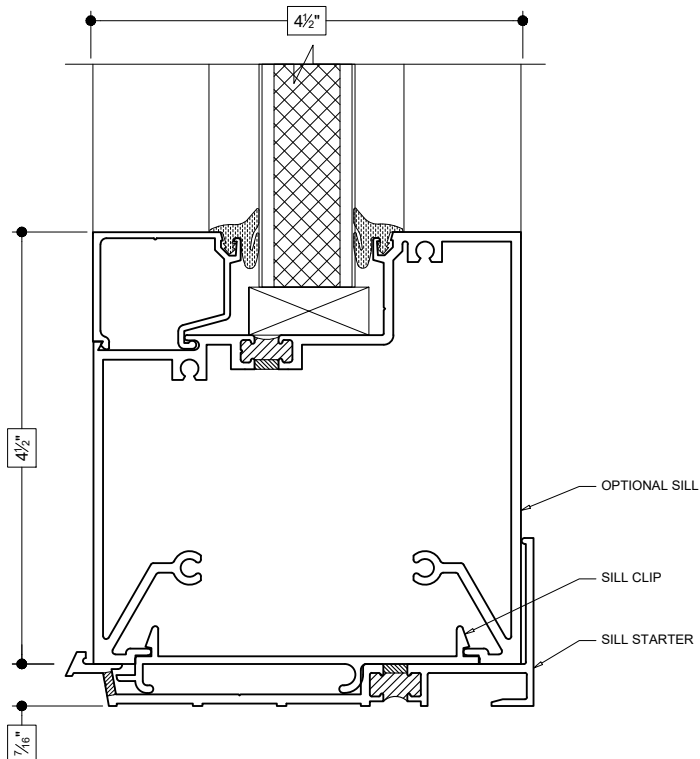


Details shown reflect the most commonly used configurations.
 Contact AWM for additional details and/or assistance.

10/08/19



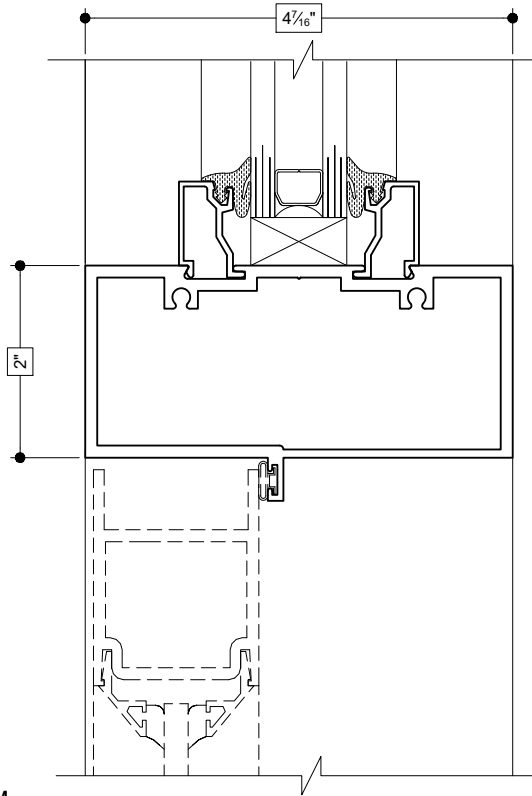
④
**INTERMEDIATE
 HORIZONTAL**
 (OPERABLE OVER PANEL)



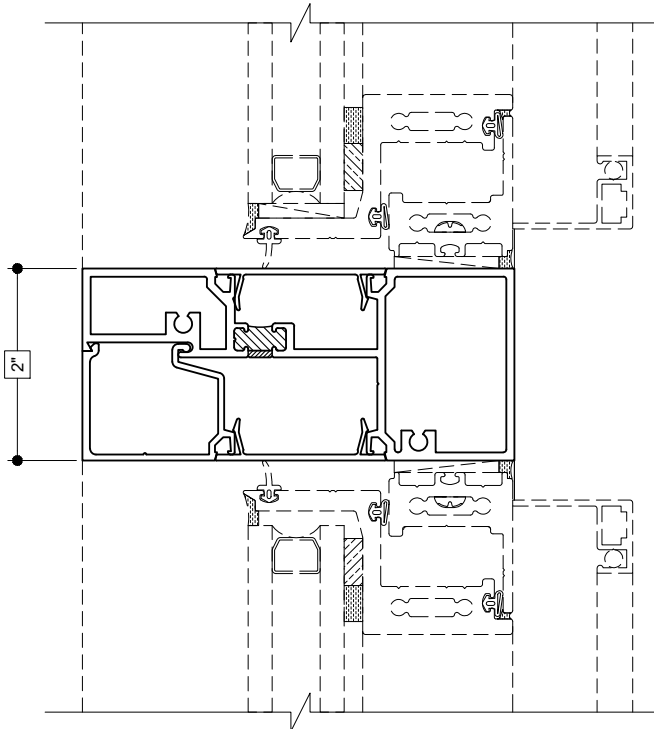
⑤
**SILL
 (OPTIONAL)**
 (PANEL)

Details shown reflect the most commonly used configurations.
 Contact AWM for additional details and/or assistance.

10/08/19



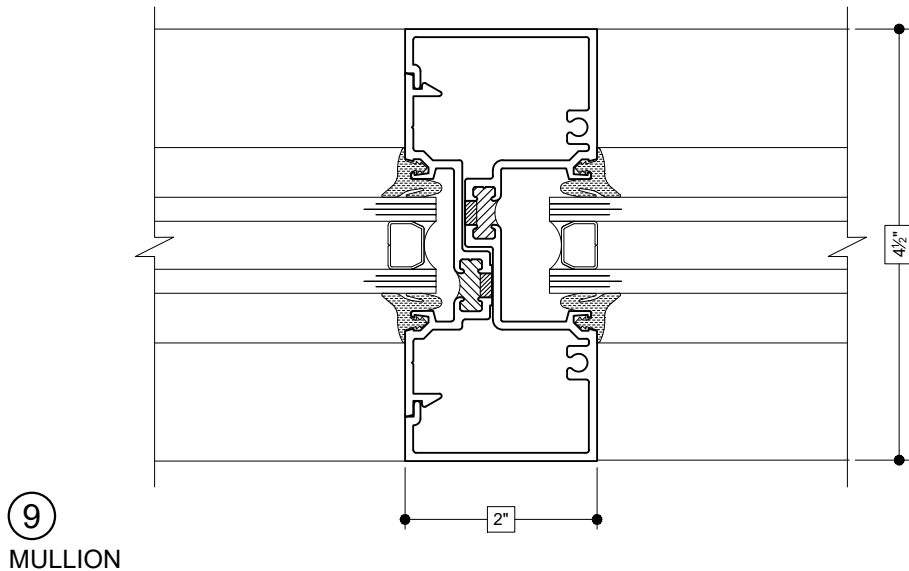
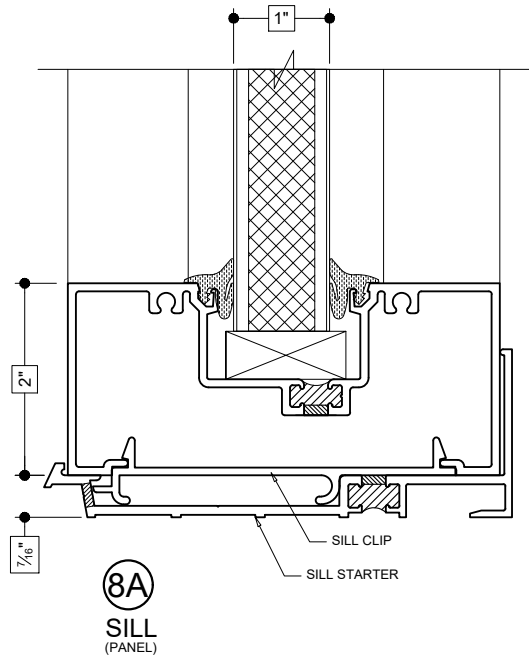
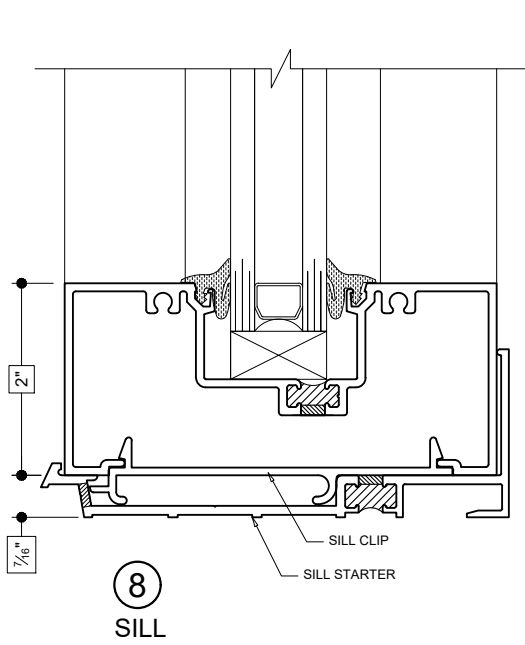
⑥
 DOOR TRANSOM



⑦
 INTERMEDIATE
 HORIZONTAL
 (OPERABLE OVER OPERABLE)

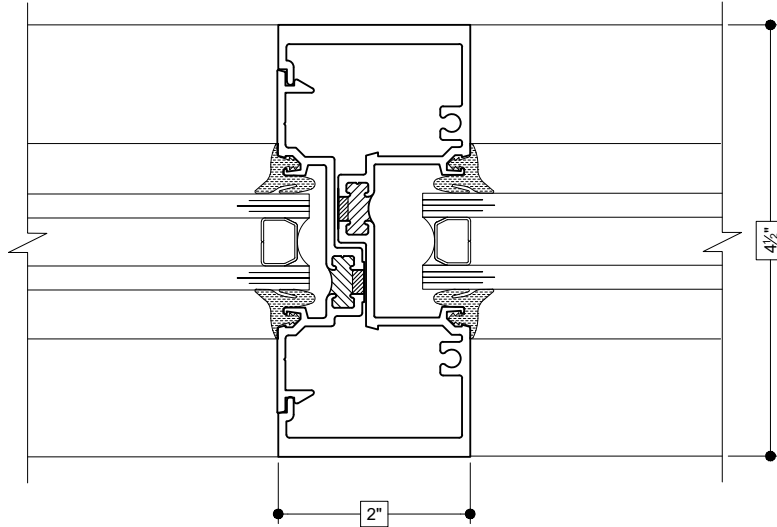
Details shown reflect the most commonly used configurations.
 Contact AWM for additional details and/or assistance.

10/08/19

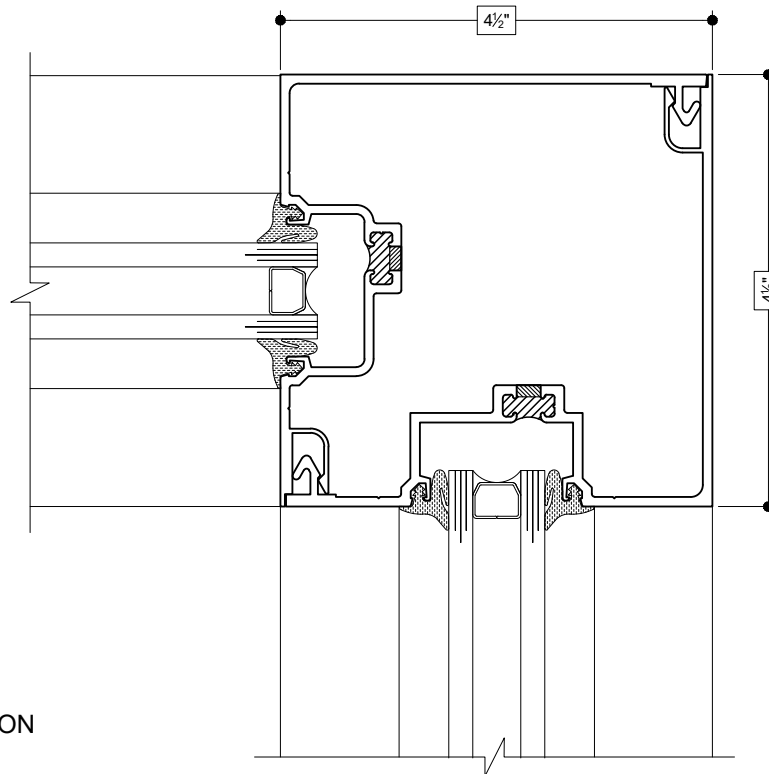


Details shown reflect the most commonly used configurations.
 Contact AWM for additional details and/or assistance.

10/08/19



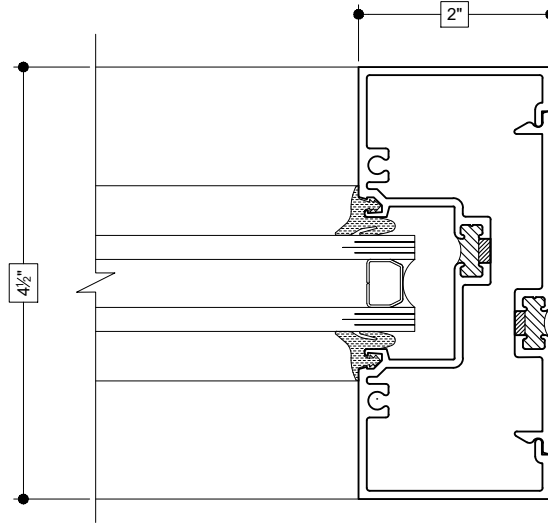
⑩
 STRUCTURAL
 MULLION
 (OPTIONAL)



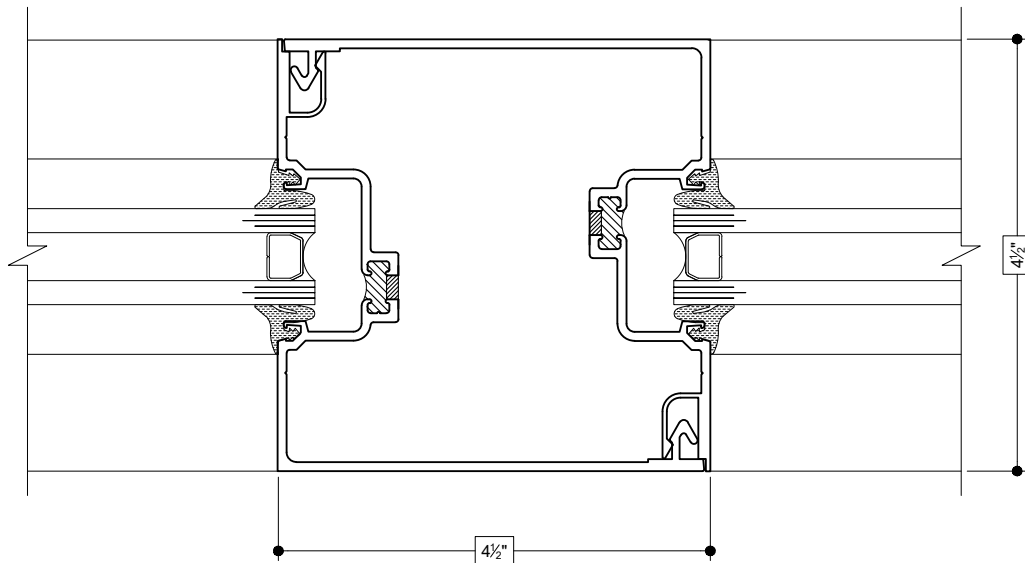
⑪
 90° INSIDE
 CORNER MULLION

Details shown reflect the most commonly used configurations.
Contact AWM for additional details and/or assistance.

10/08/19



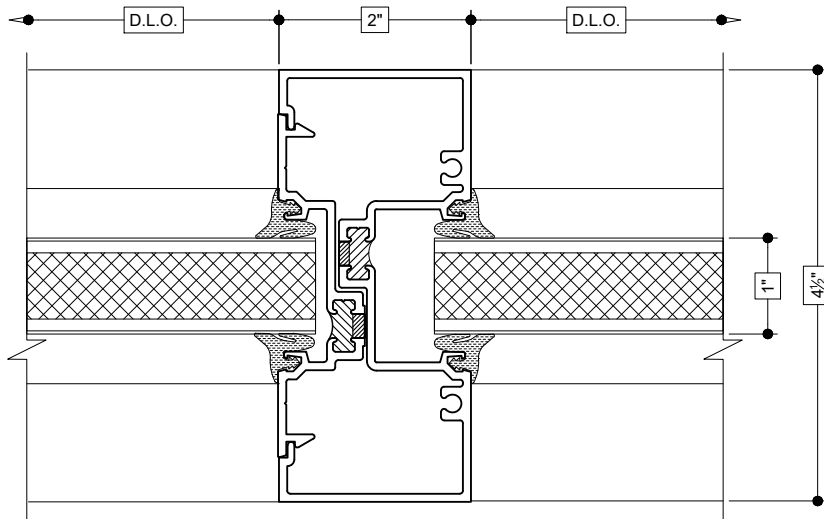
⑫
RIGHT JAMB



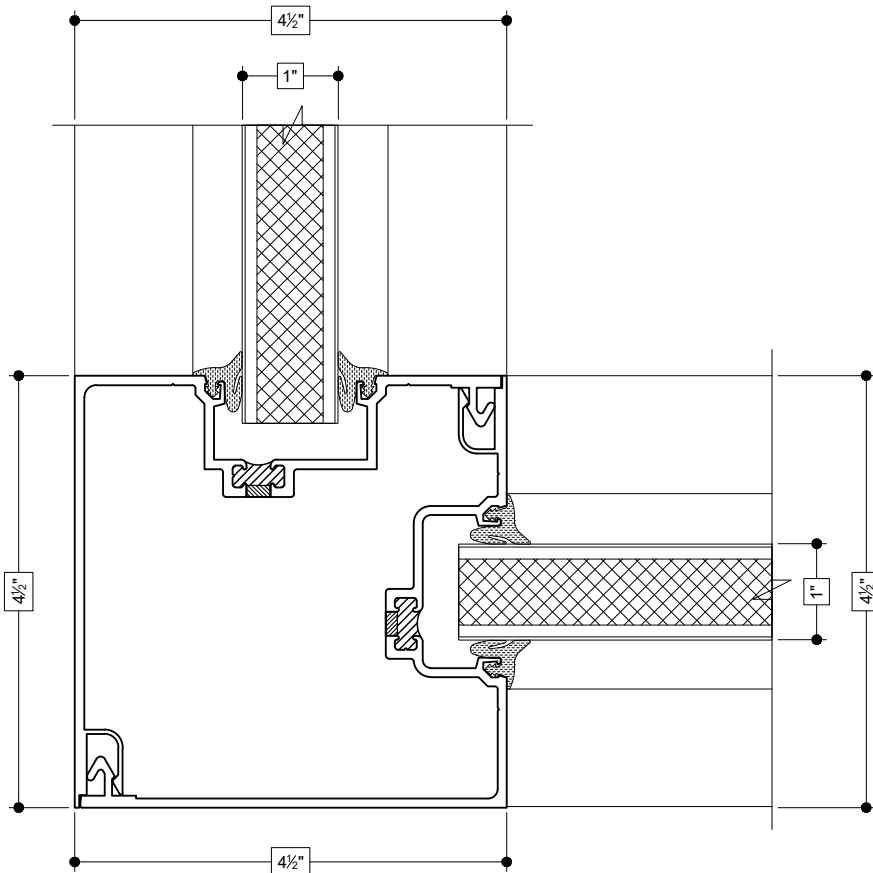
⑬
MULLION

Details shown reflect the most commonly used configurations.
 Contact AWM for additional details and/or assistance.

10/08/19



14
MULLION
 (PANEL TO PANEL)

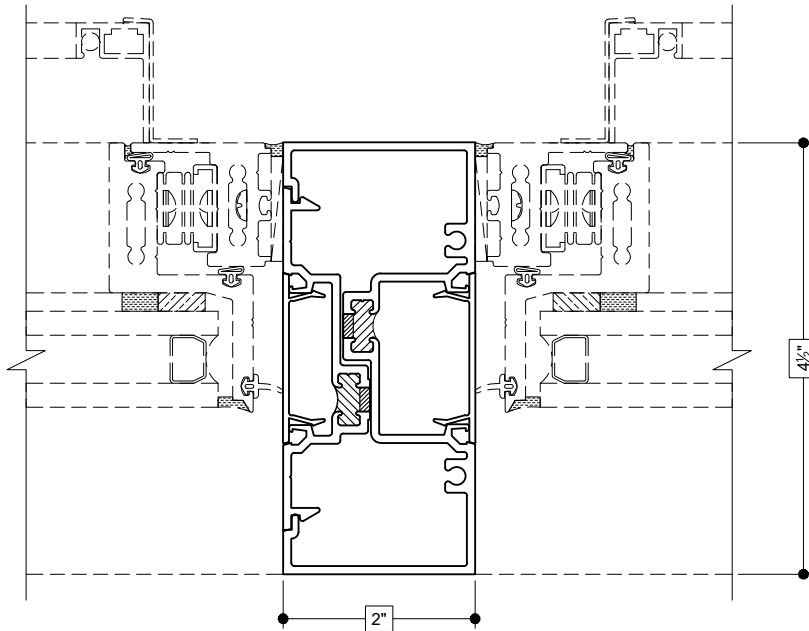


15
90° OUTSIDE CORNER
 (PANEL TO PANEL)

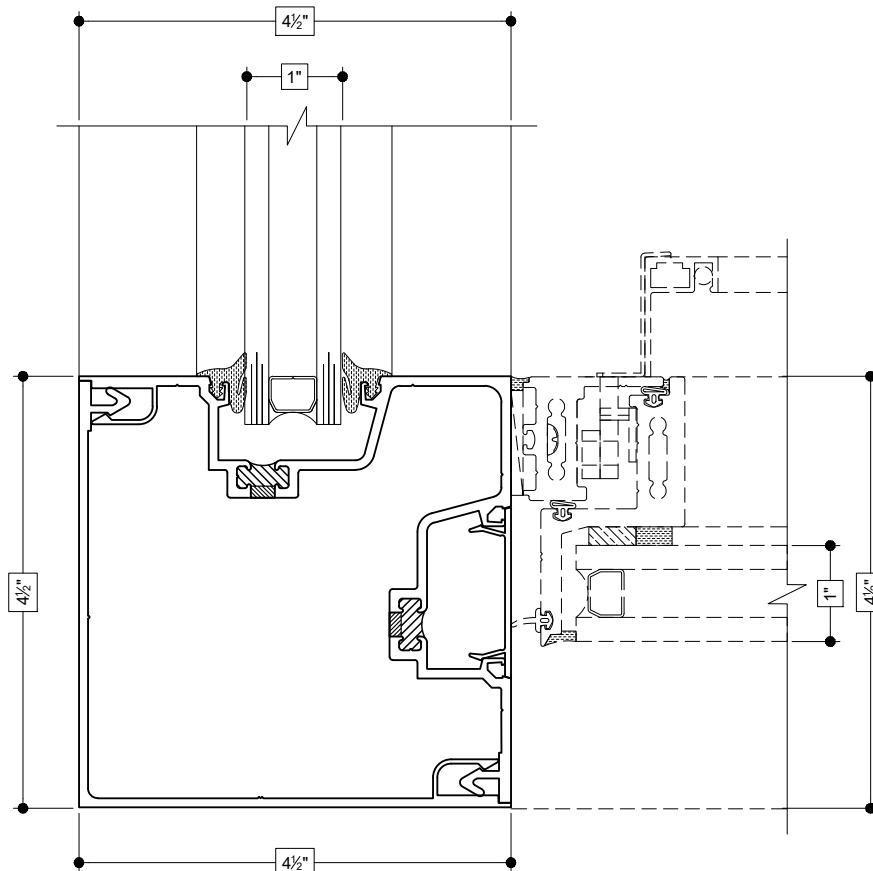
Details shown reflect the most commonly used configurations.
 Contact AWM for additional details and/or assistance.

10/08/19

①⑥
VERTICAL
MULLION
 (OPERABLE TO OPERABLE)

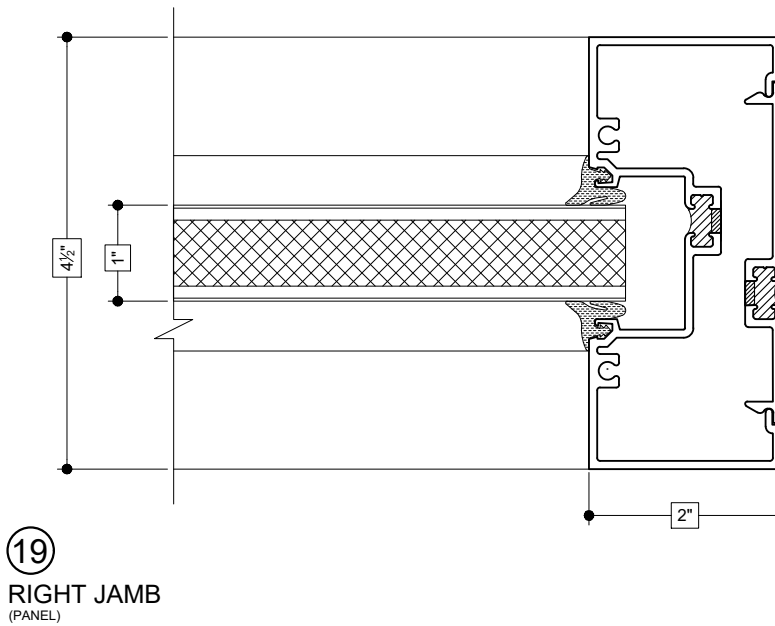
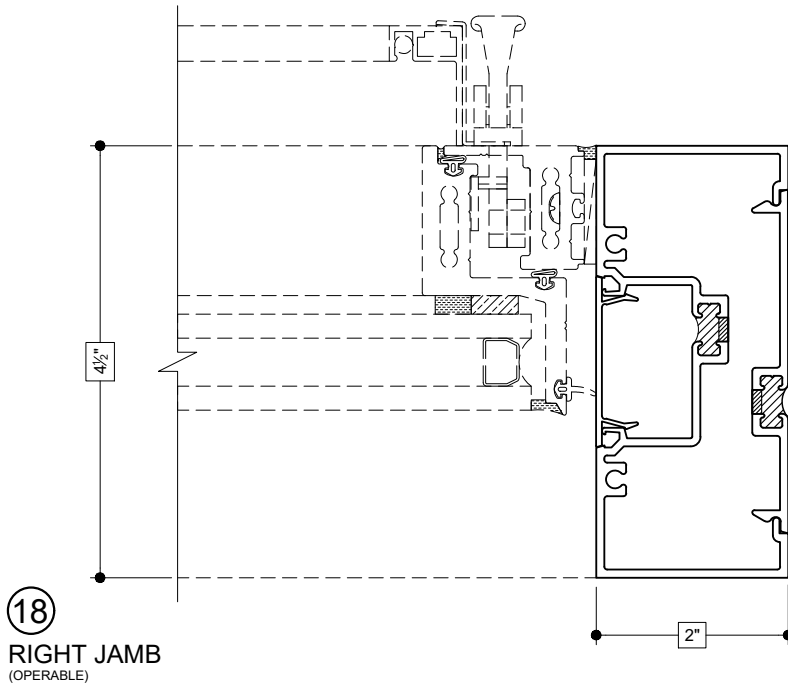


①⑦
90° OUTSIDE
CORNER



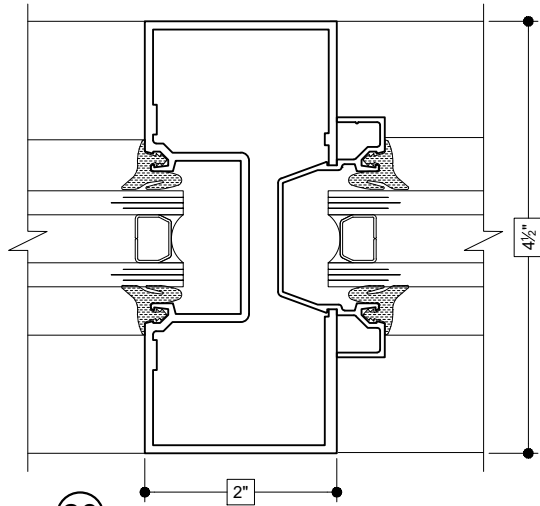
Details shown reflect the most commonly used configurations.
 Contact AWM for additional details and/or assistance.

10/08/19

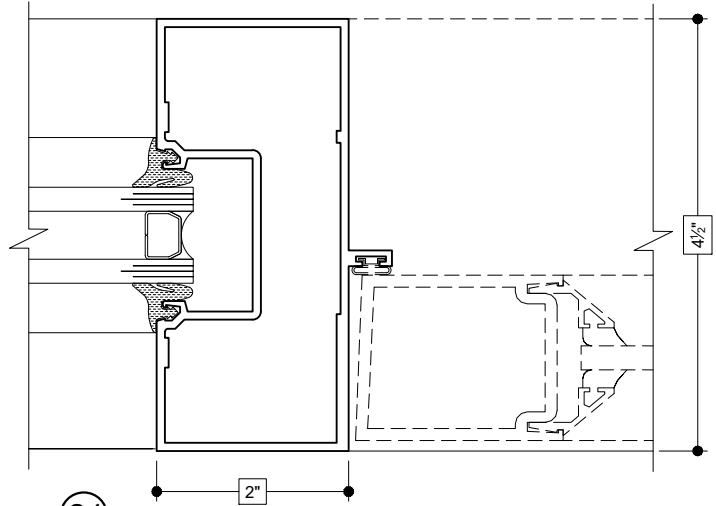


Details shown reflect the most commonly used configurations.
 Contact AWM for additional details and/or assistance.

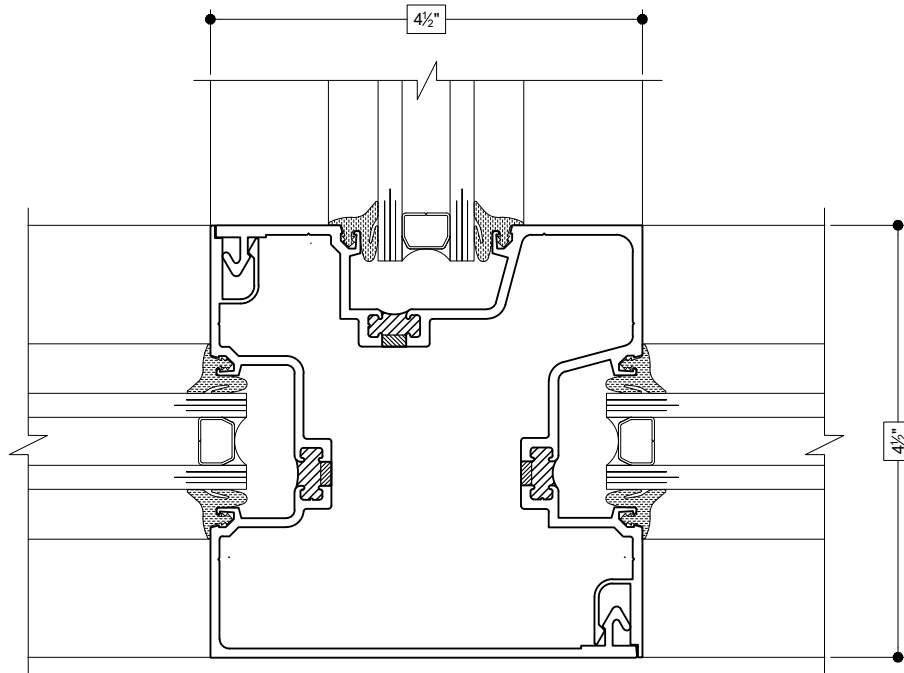
10/08/19



②0
 TRANSOM
 LEFT JAMB AT SIDELITE



②1
 LEFT DOOR JAMB



INTERIOR JUNCTION (OPTIONAL)