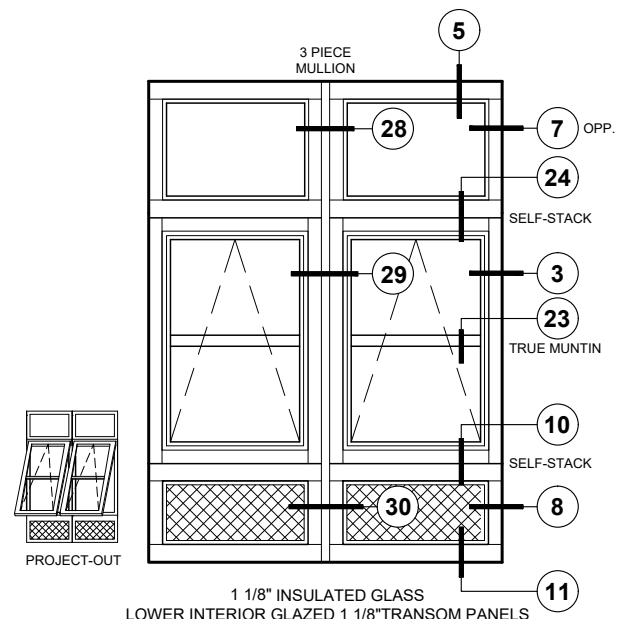
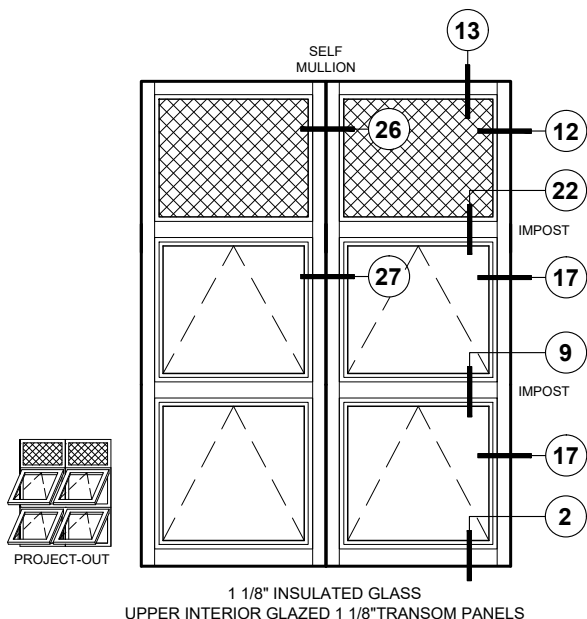
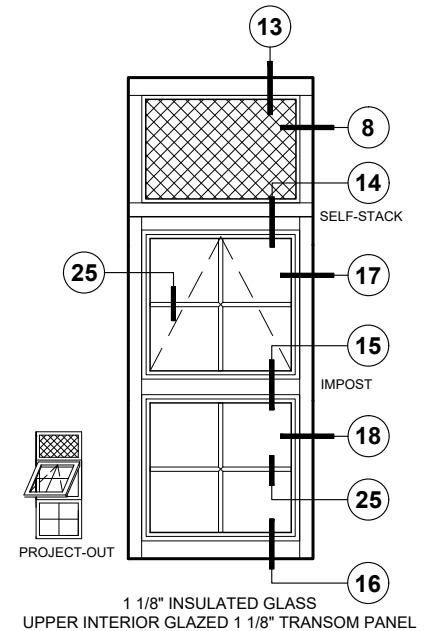
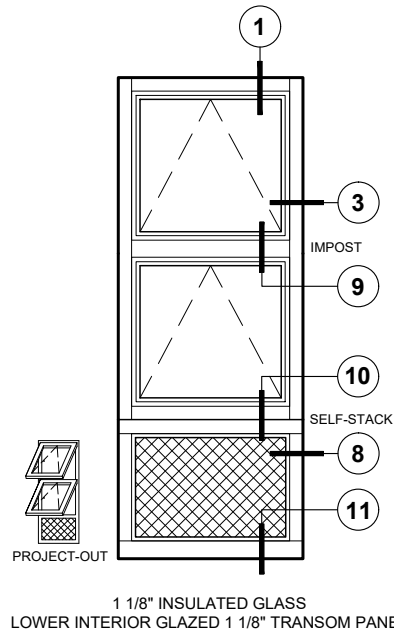
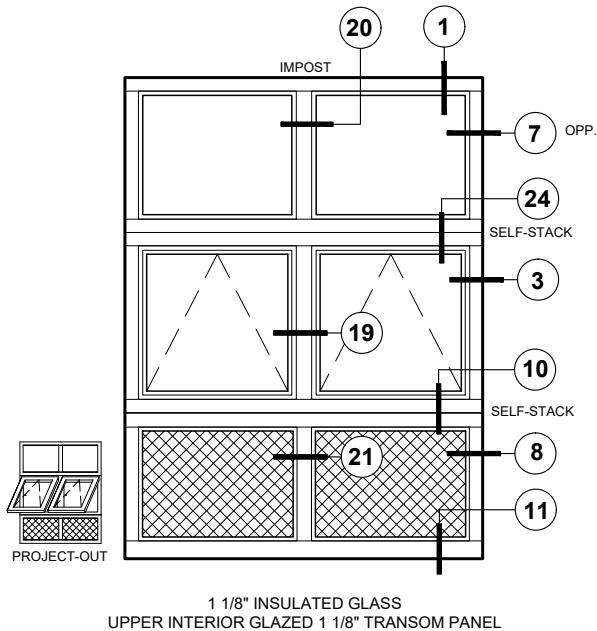
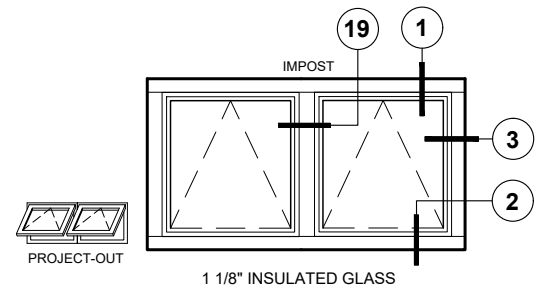
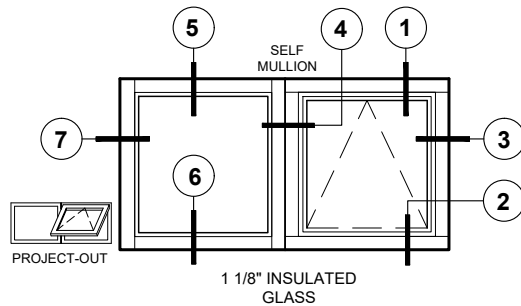
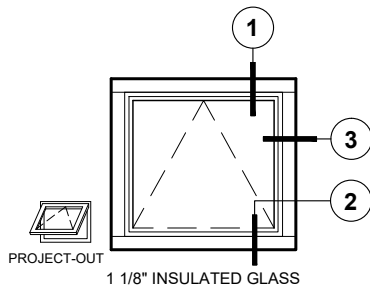


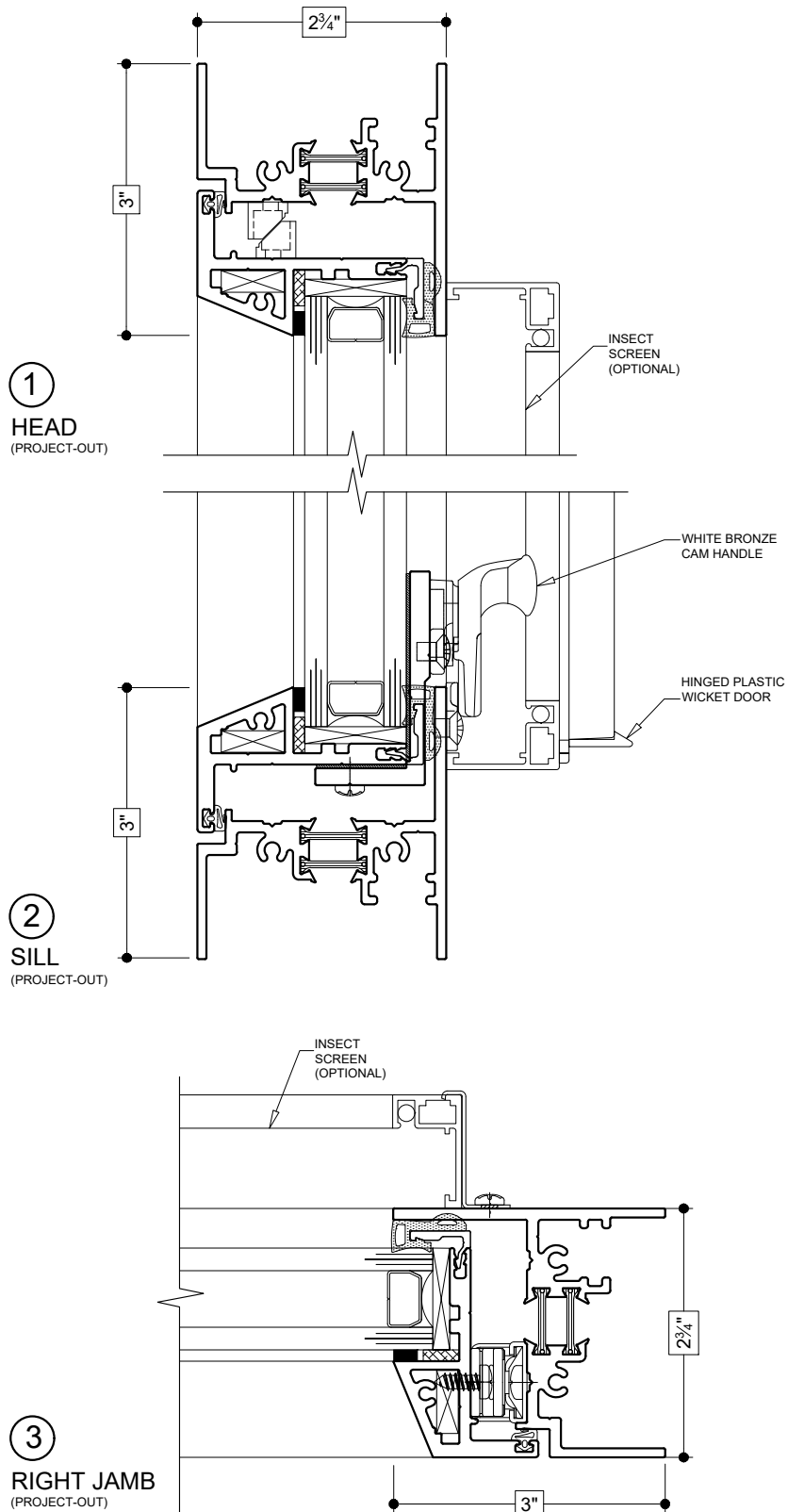
Details shown reflect the most commonly used configurations.
Contact AWM for additional details and/or assistance.

05/13/19



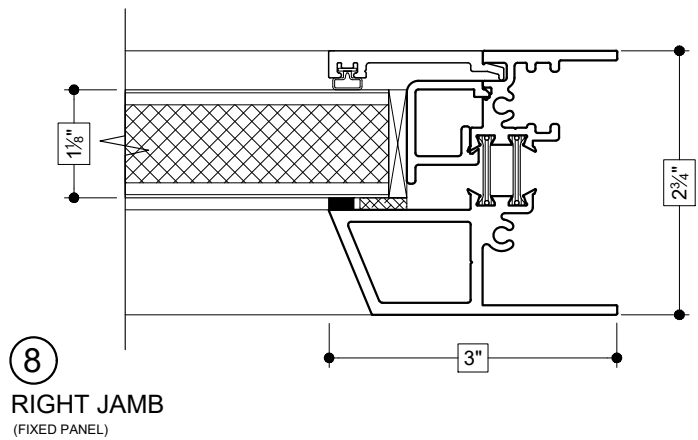
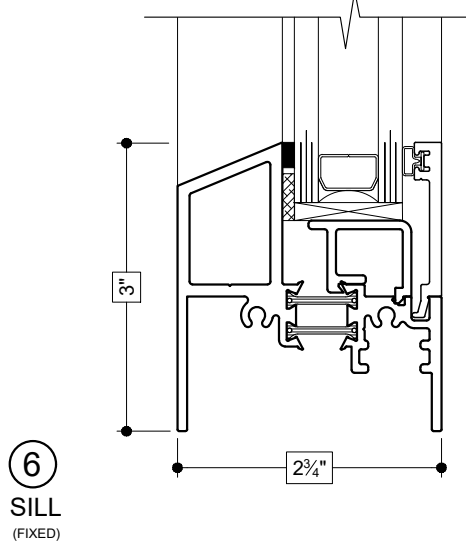
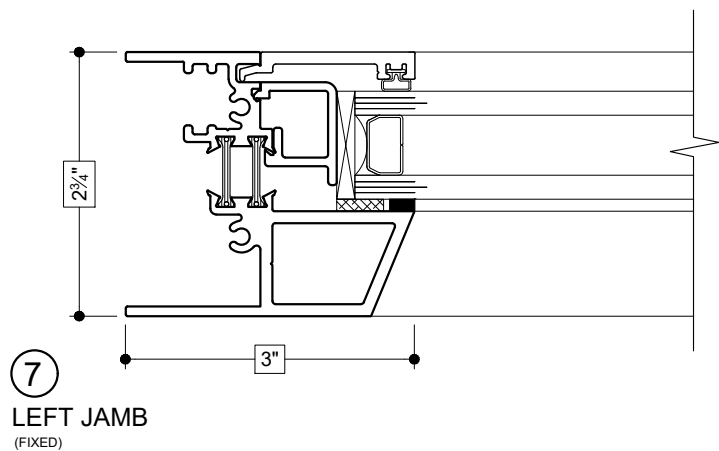
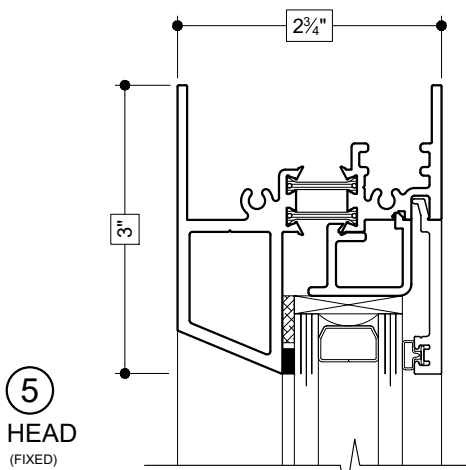
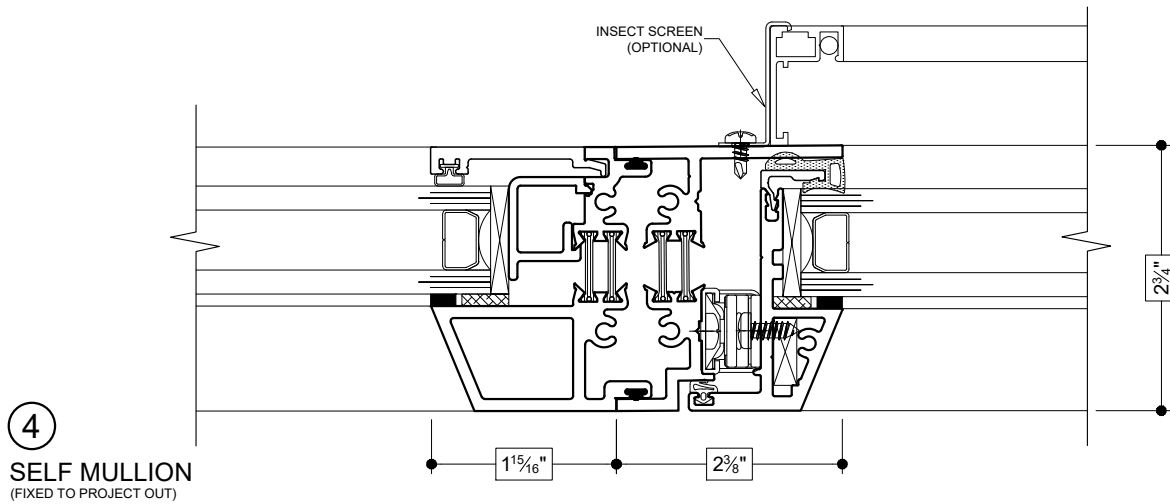
Details shown reflect the most commonly used configurations.
Contact AWM for additional details and/or assistance.

05/13/19



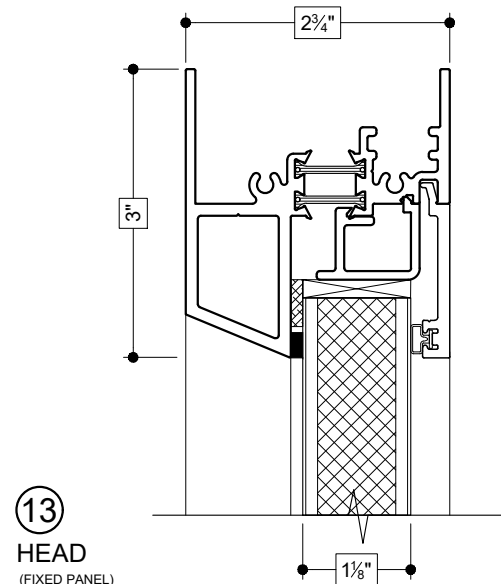
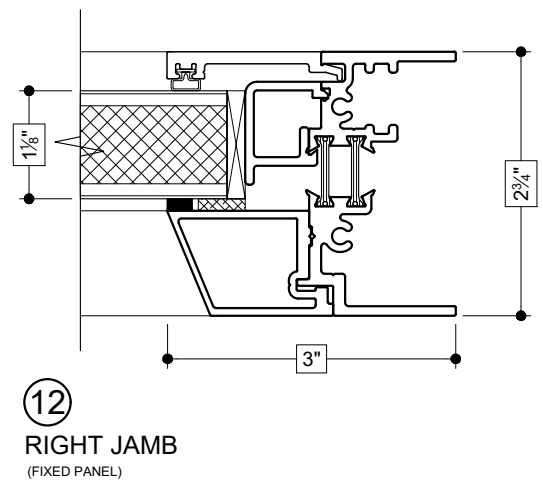
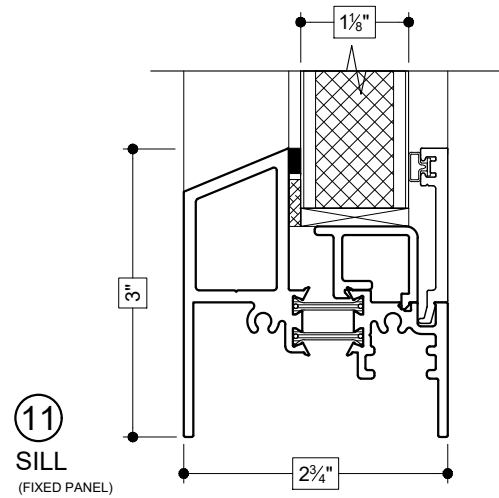
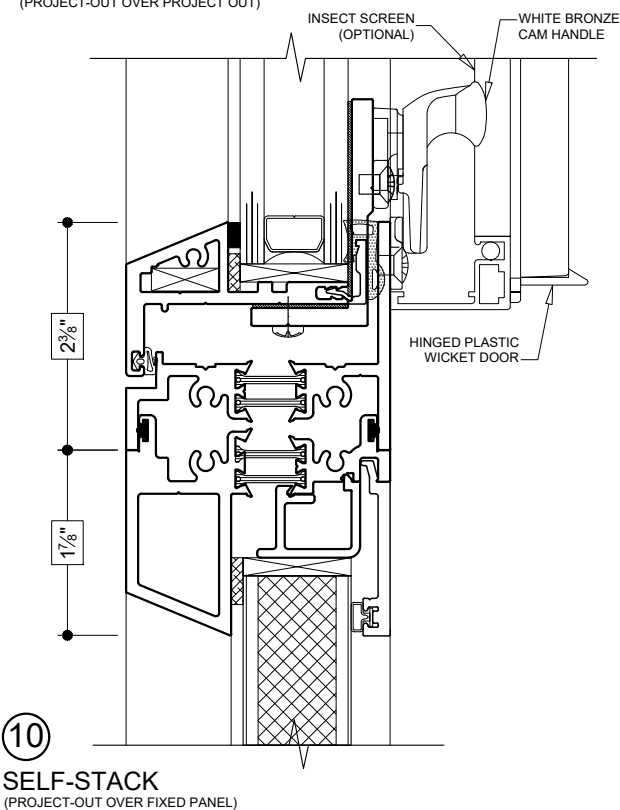
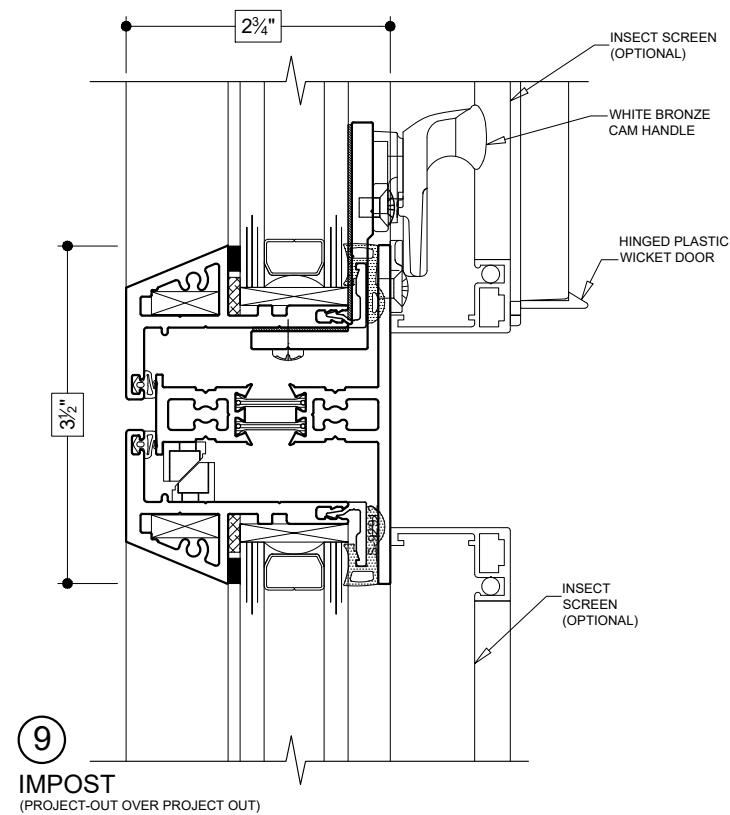
Details shown reflect the most commonly used configurations.
Contact AWM for additional details and/or assistance.

05/13/19



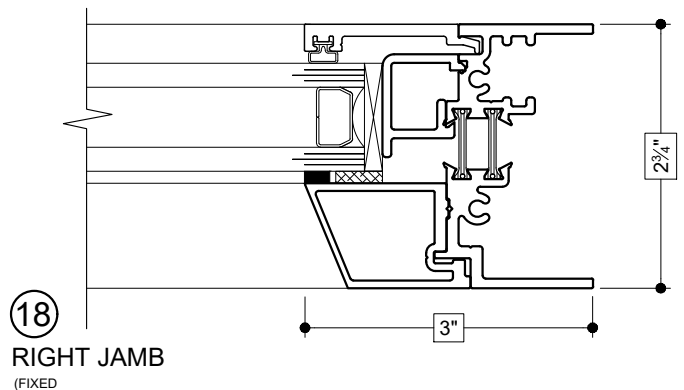
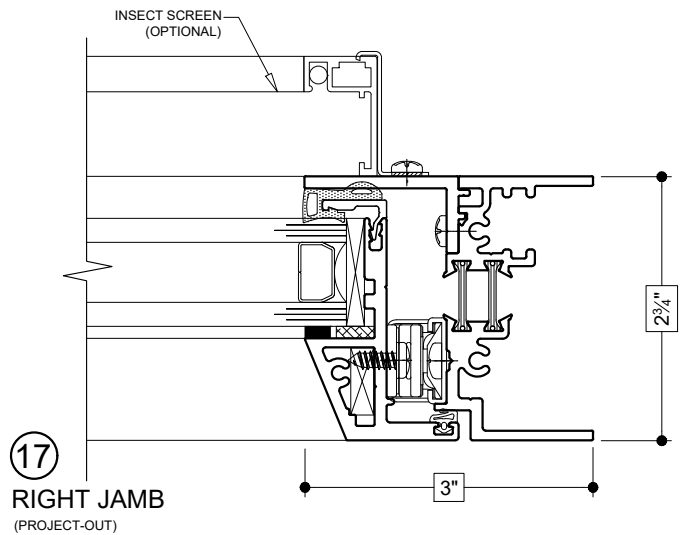
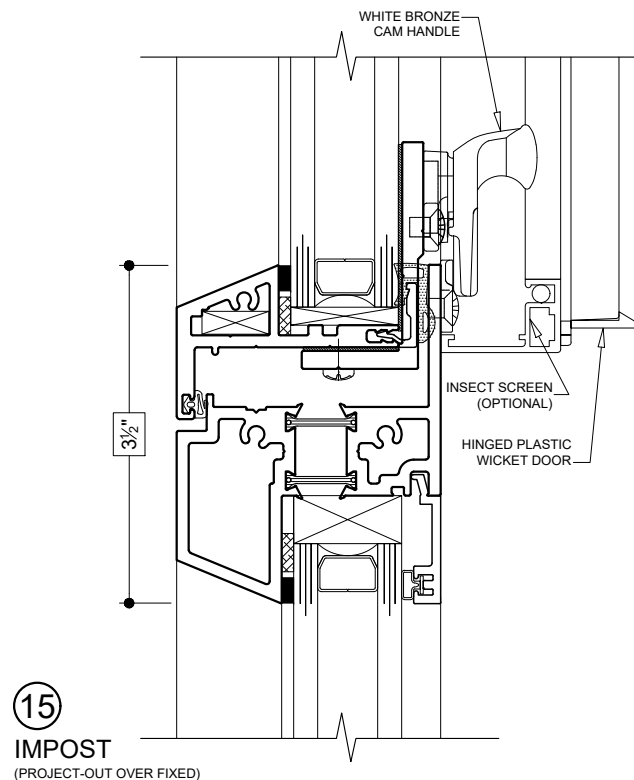
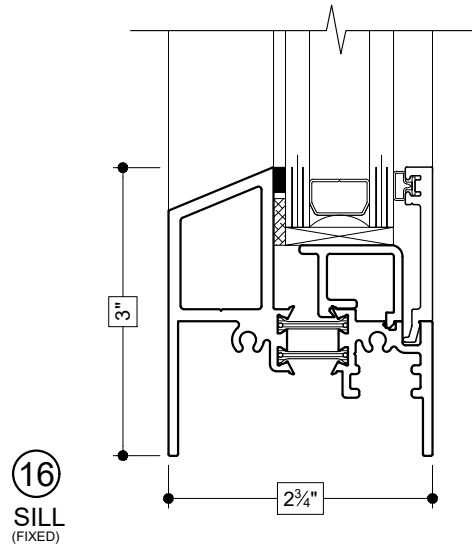
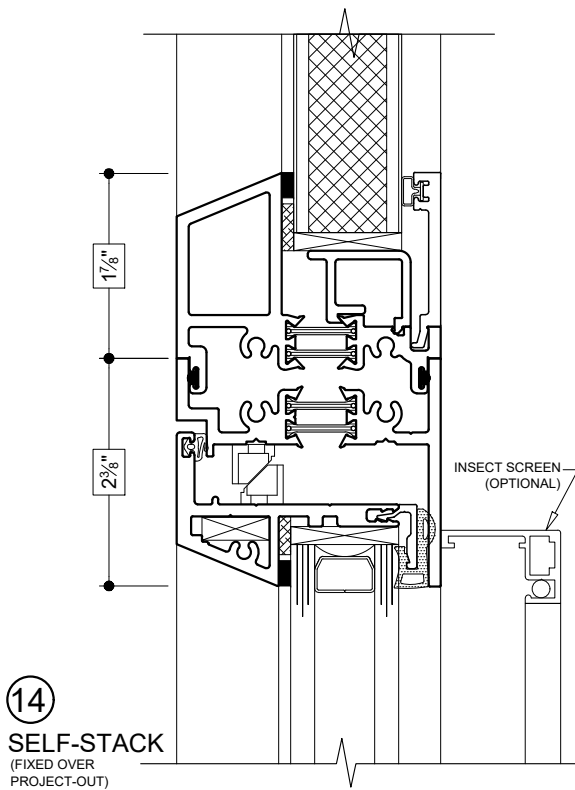
Details shown reflect the most commonly used configurations.
Contact AWM for additional details and/or assistance.

05/13/19



Details shown reflect the most commonly used configurations.
Contact AWM for additional details and/or assistance.

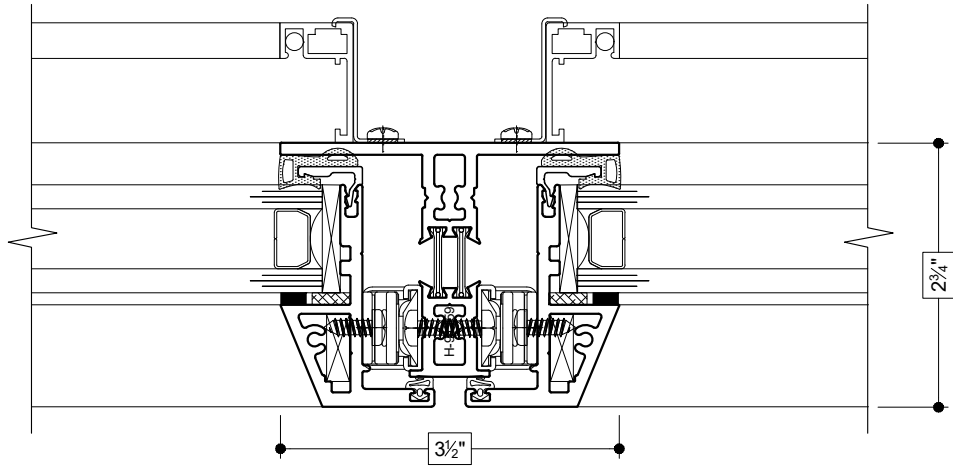
05/13/19



19

IMPOST

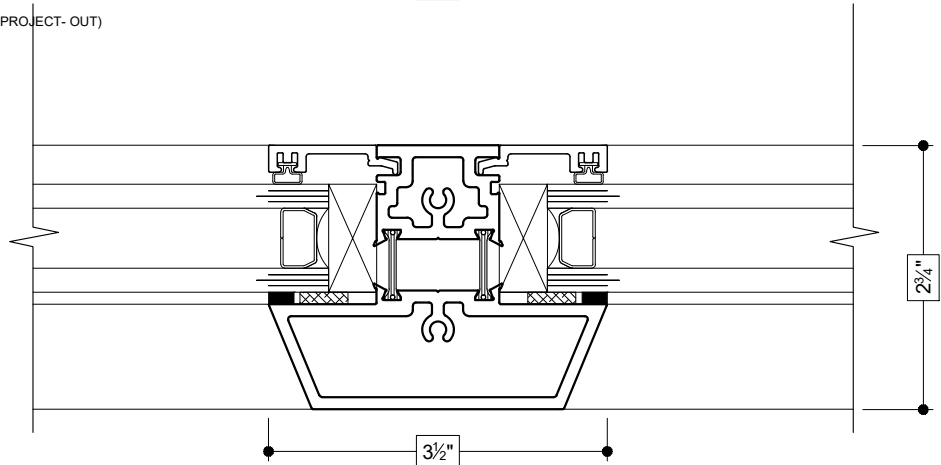
(PROJECT- OUT TO PROJECT- OUT)



20

TRUE MUNTIN

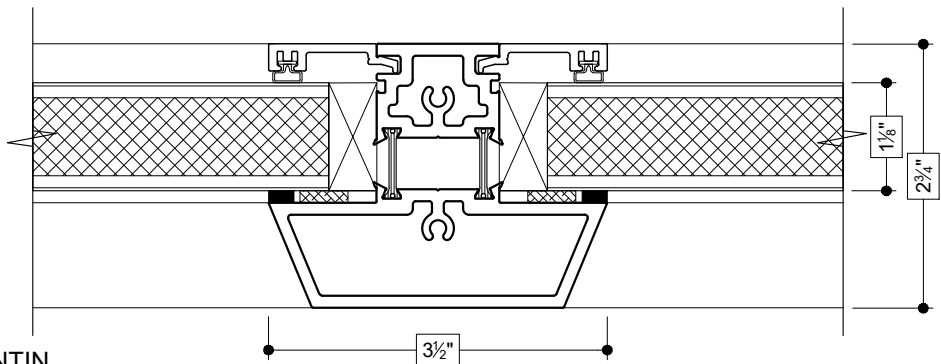
(FIXED TO FIXED)

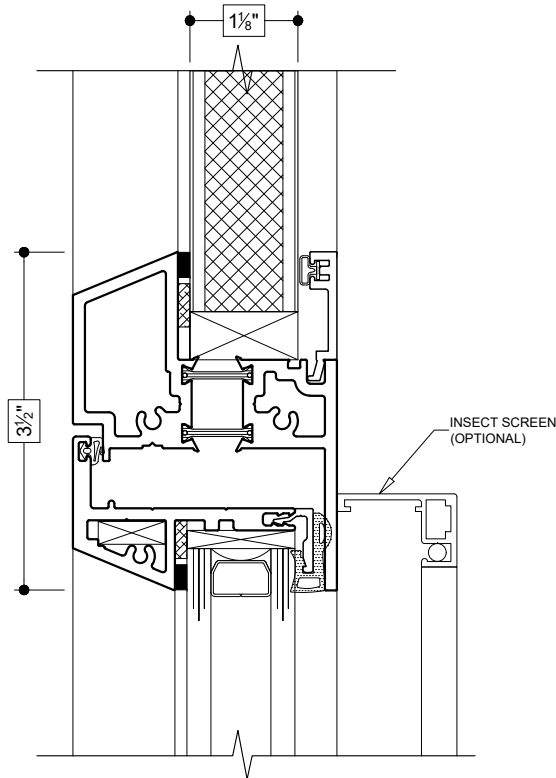


21

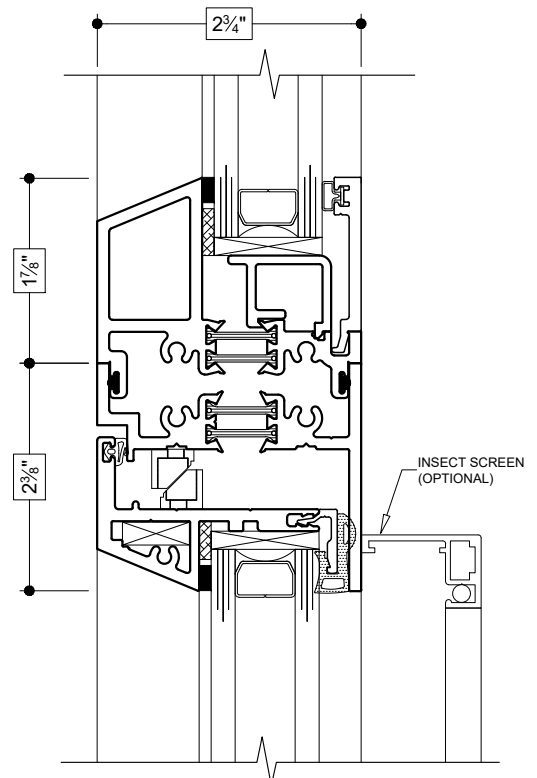
TRUE MUNTIN

(FIXED PANEL TO FIXED PANEL)

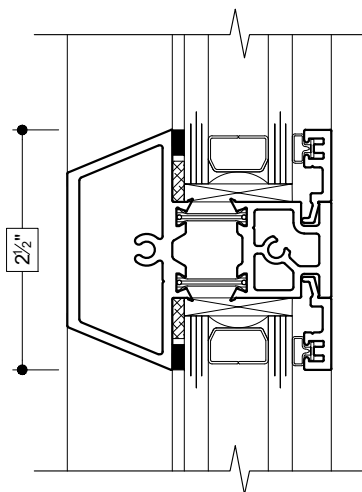




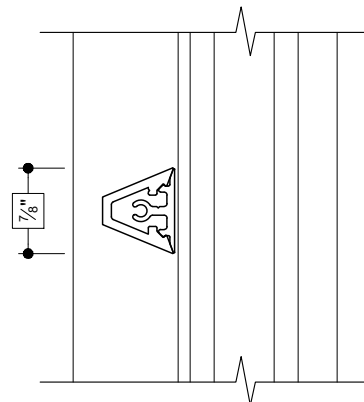
(22)
IMPOST
(FIXED OVER PROJECT-OUT)



(24)
SELF-STACK
(FIXED OVER PROJECT-OUT)



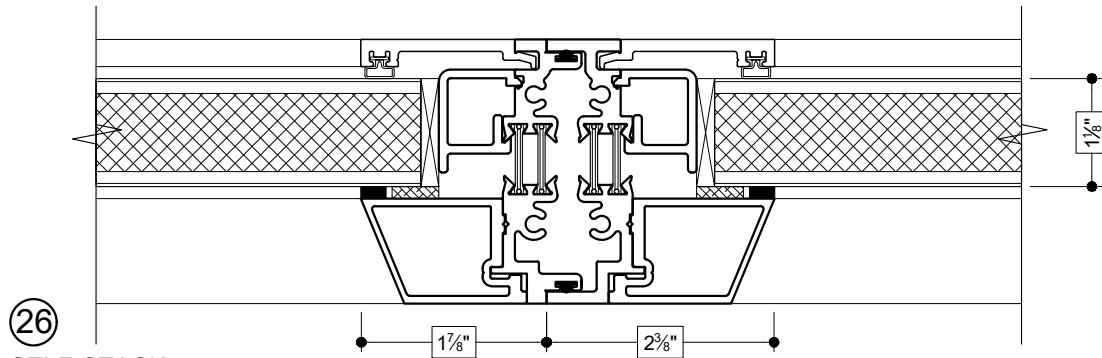
(23)
TRUE MUNTIN
(FIXED)



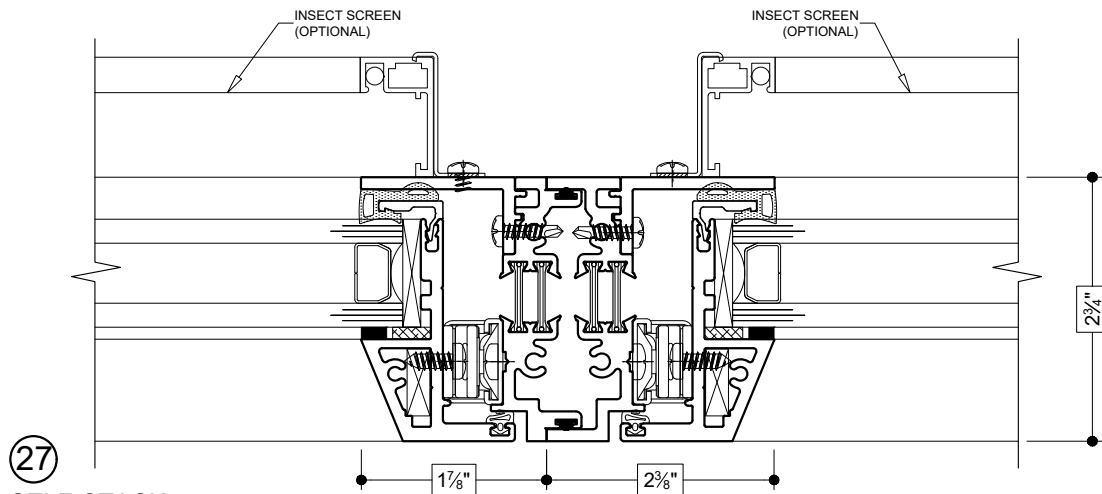
(25)
APPLIED MUNTIN
(FIXED)

Details shown reflect the most commonly used configurations.
Contact AWM for additional details and/or assistance.

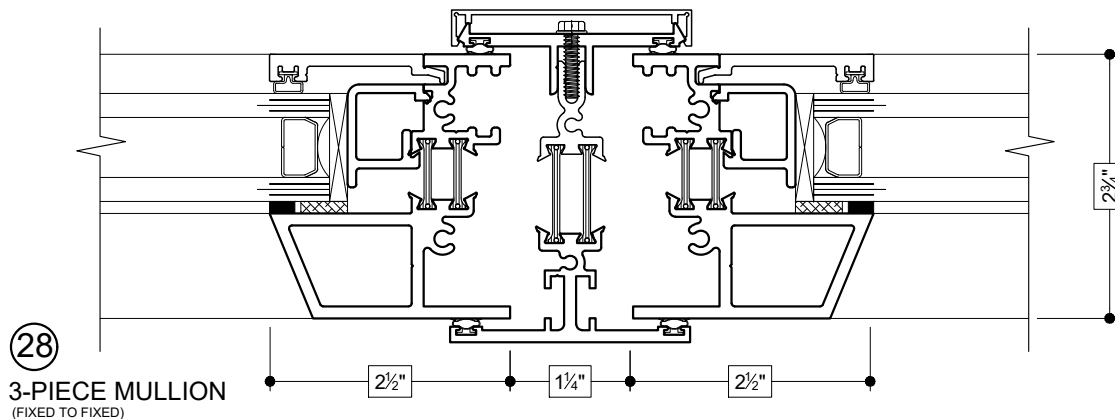
05/13/19



26
SELF-STACK
(FIXED PANEL TO FIXED PANEL)



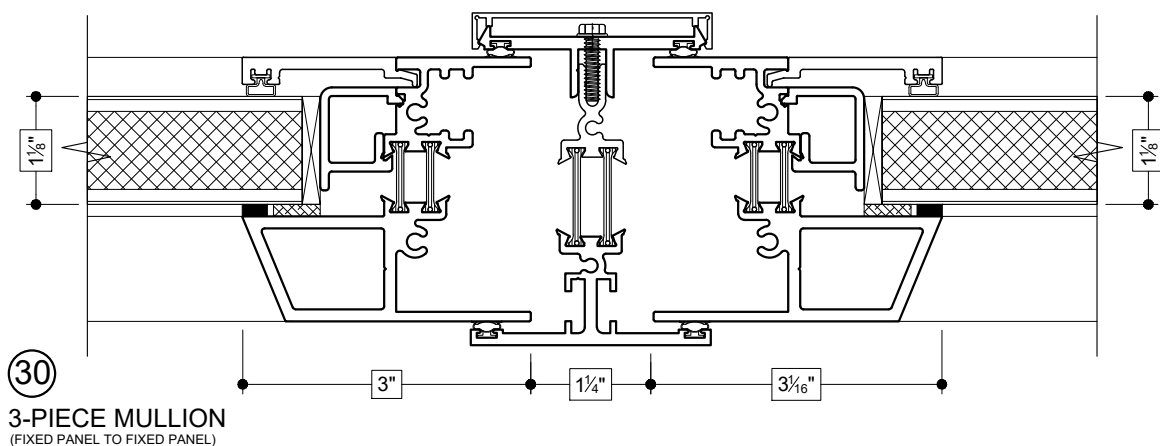
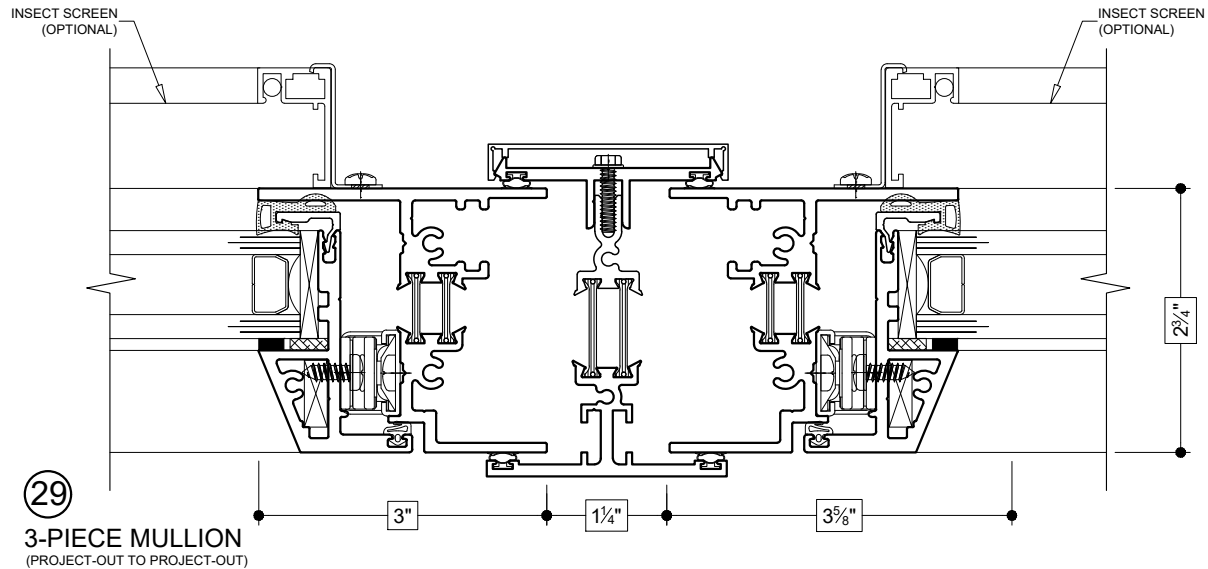
27
SELF-STACK
(FIXED TO FIXED)



28
3-PIECE MULLION
(FIXED TO FIXED)

Details shown reflect the most commonly used configurations.
Contact AWM for additional details and/or assistance.

05/13/19



OPTIONAL 2" EXTERIOR FLANGE

