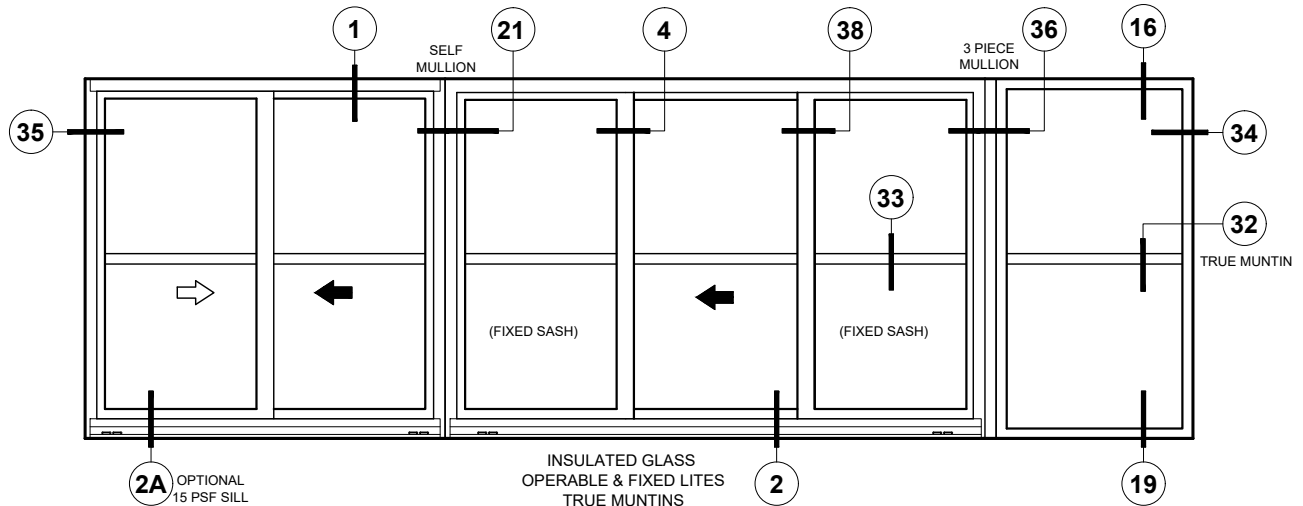
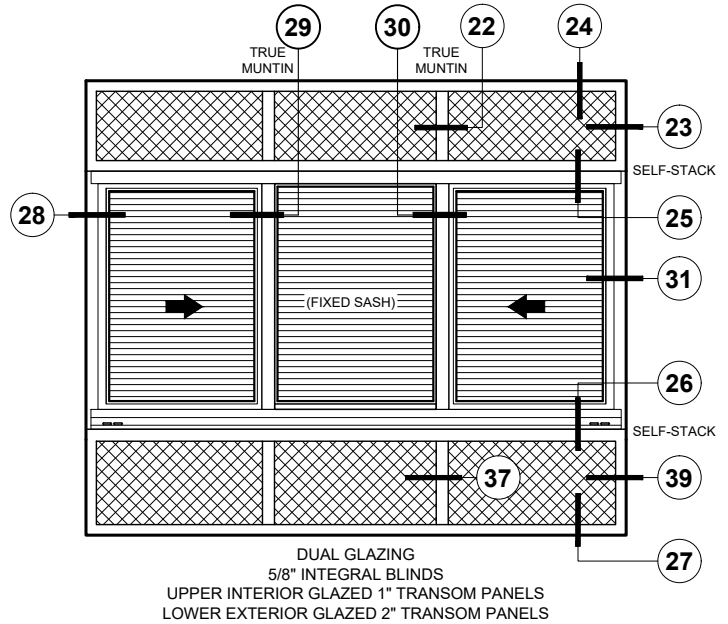
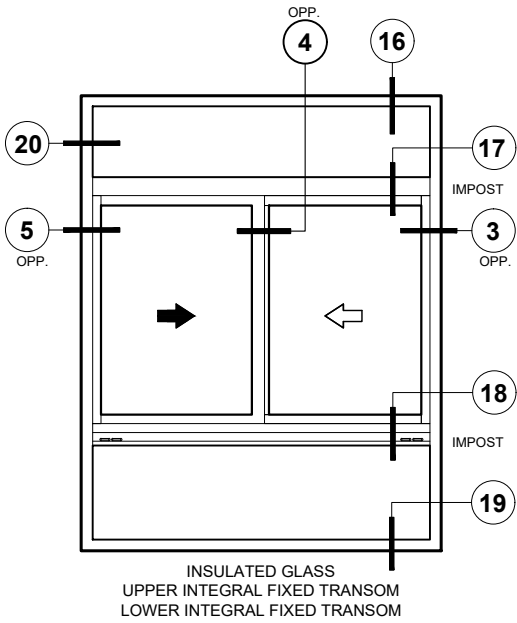
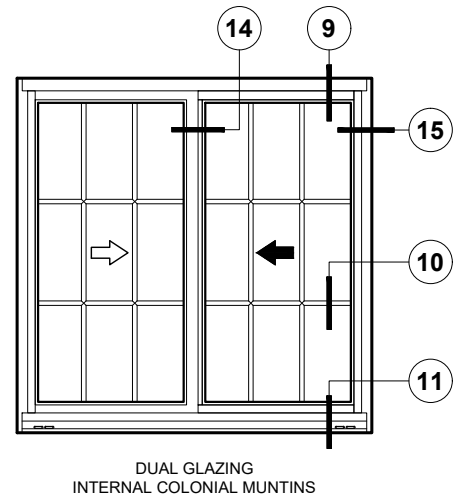
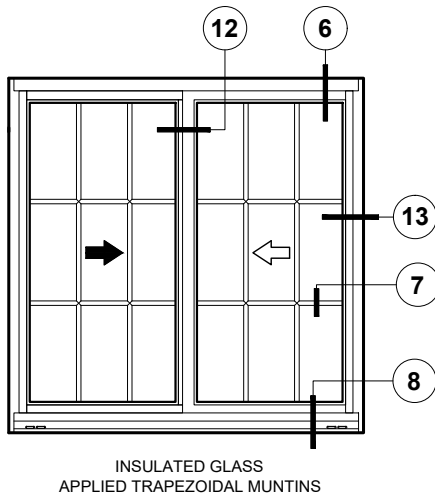
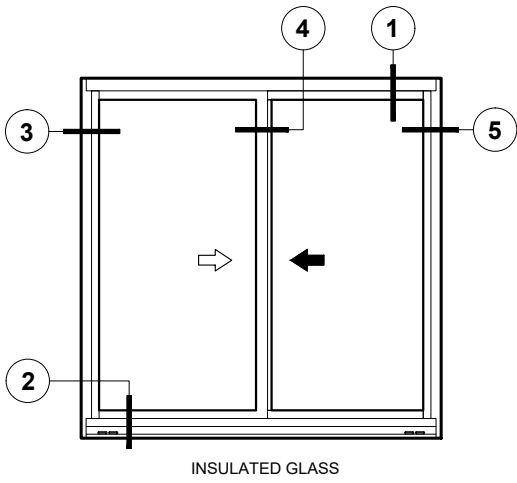


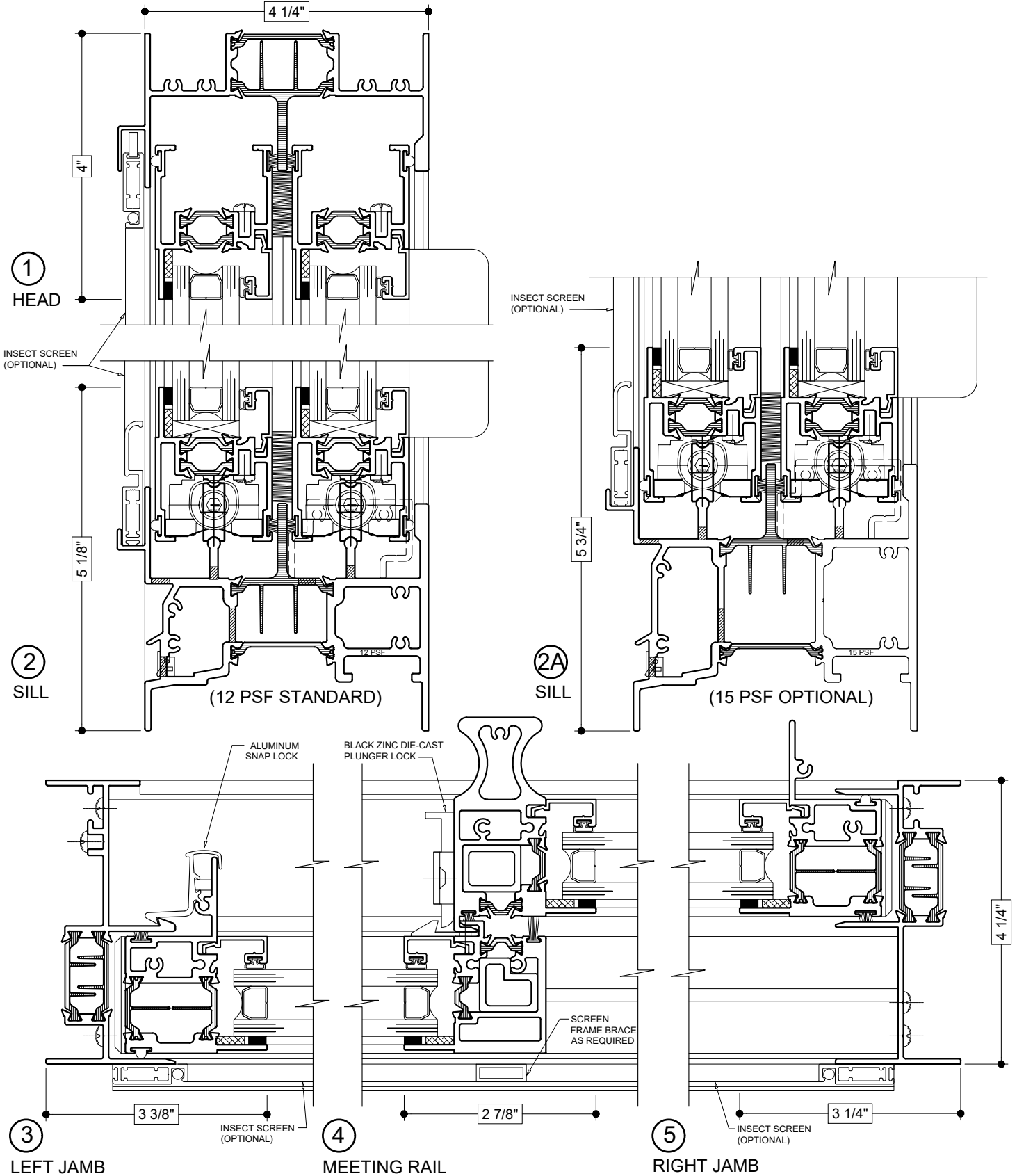
Details shown reflect the most commonly used configurations.  
Contact AWM for additional details and/or assistance.

5/13/19



Details shown reflect the most commonly used configurations.  
 Contact AWM for additional details and/or assistance.

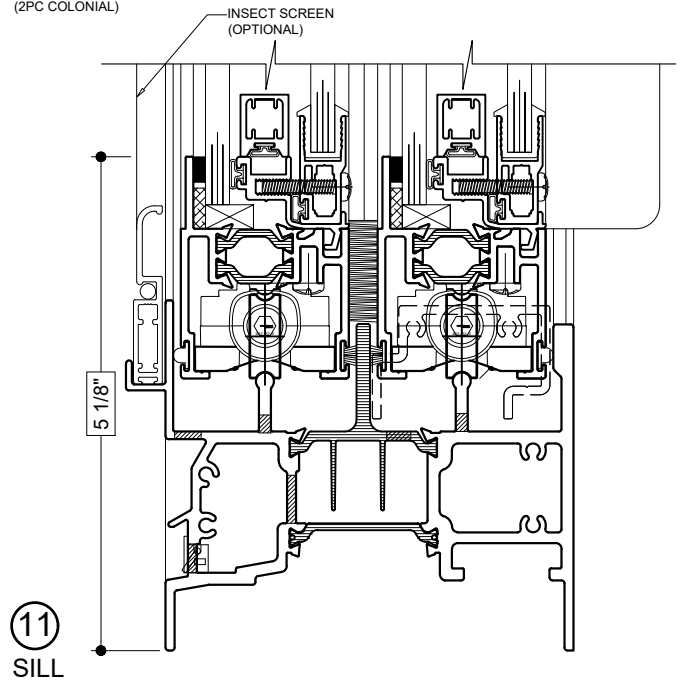
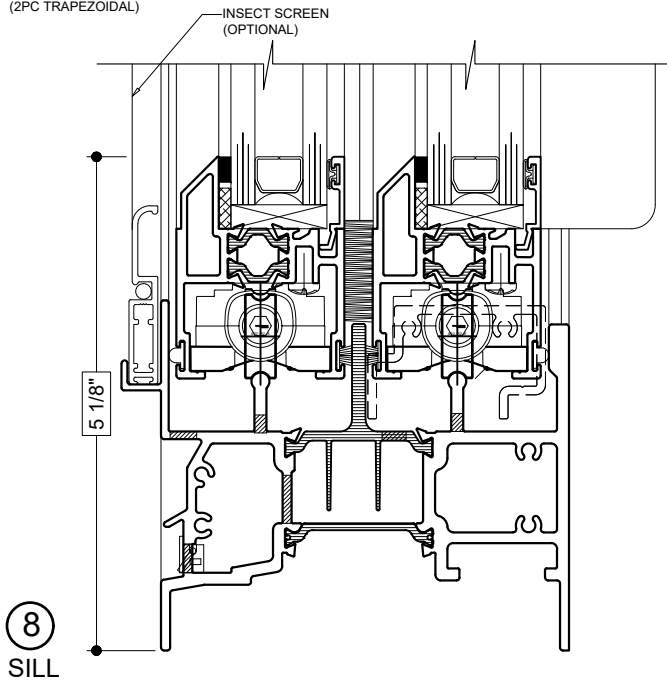
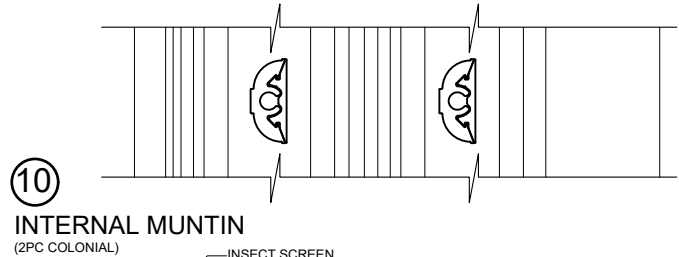
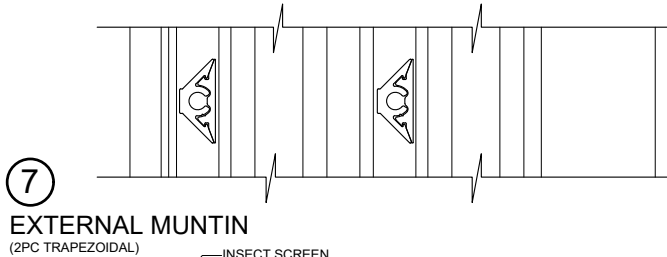
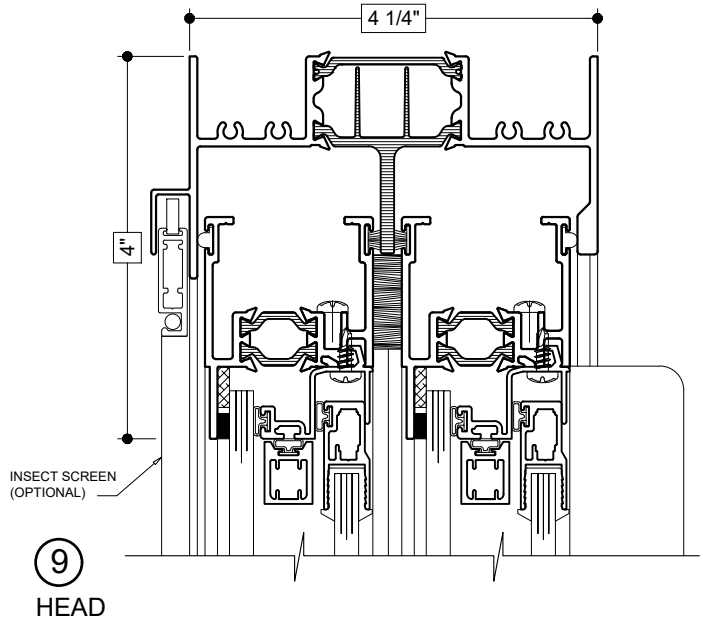
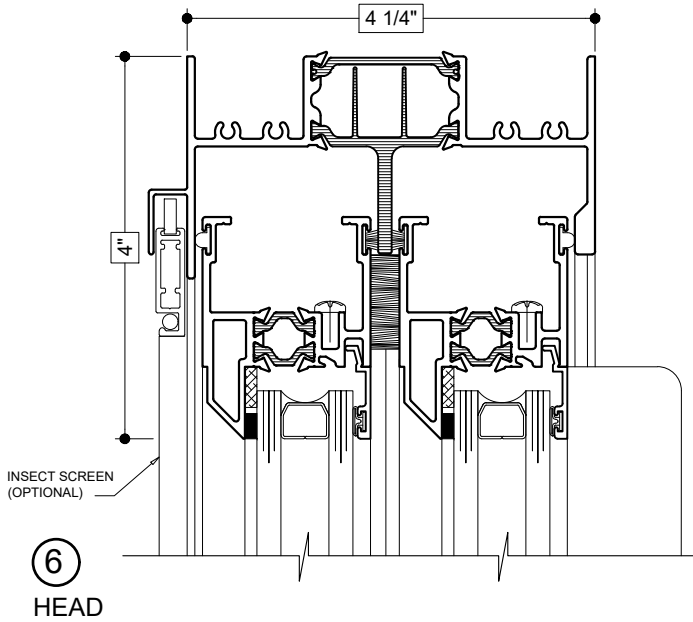
5/13/19



HALF SCALE DETAILS

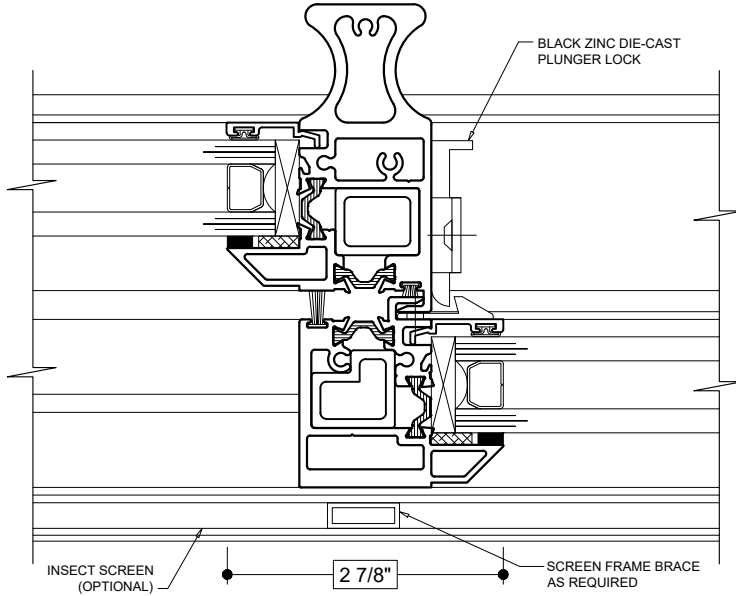
Details shown reflect the most commonly used configurations.  
 Contact AWM for additional details and/or assistance.

5/13/19

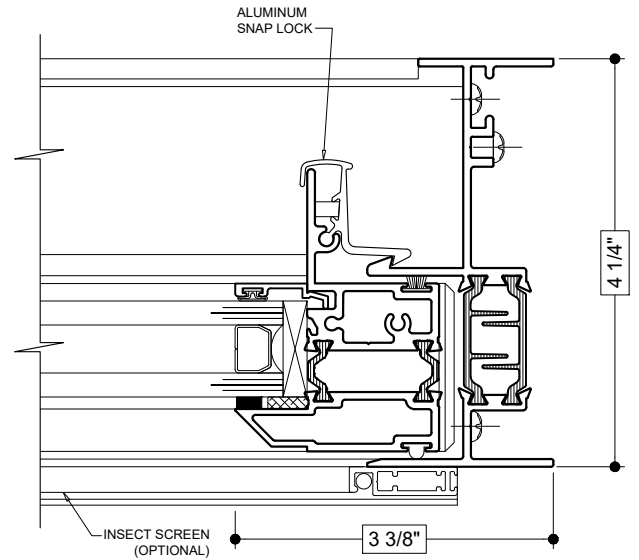


Details shown reflect the most commonly used configurations.  
 Contact AWM for additional details and/or assistance.

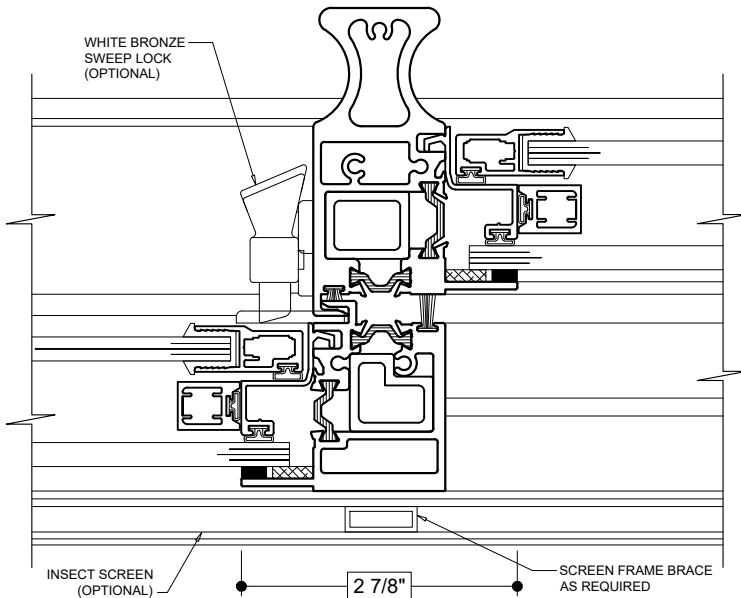
5/13/19



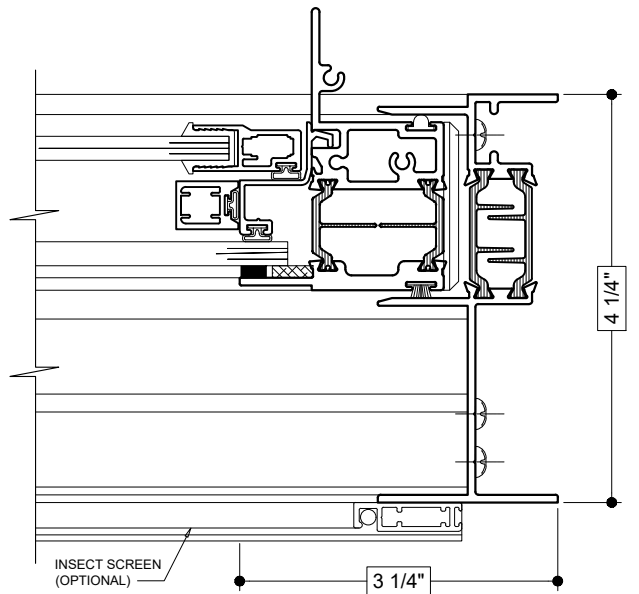
**12**  
 MEETING RAIL



**13**  
 LEFT JAMB  
 (FIXED)



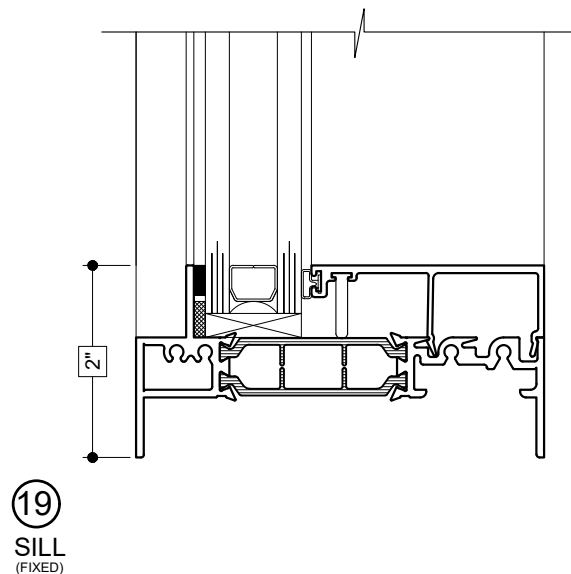
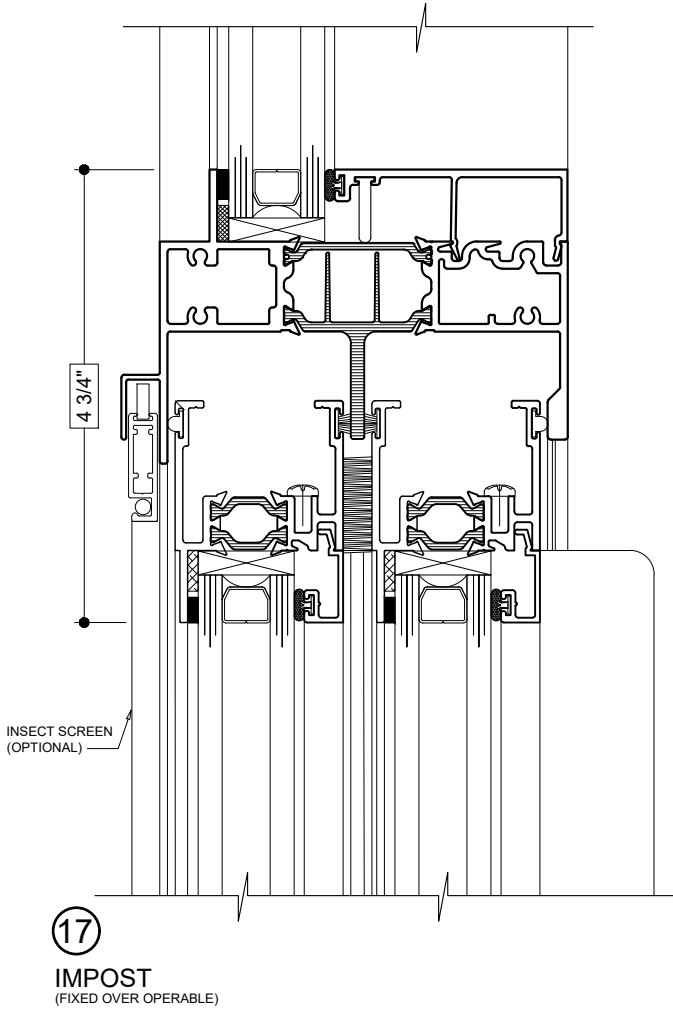
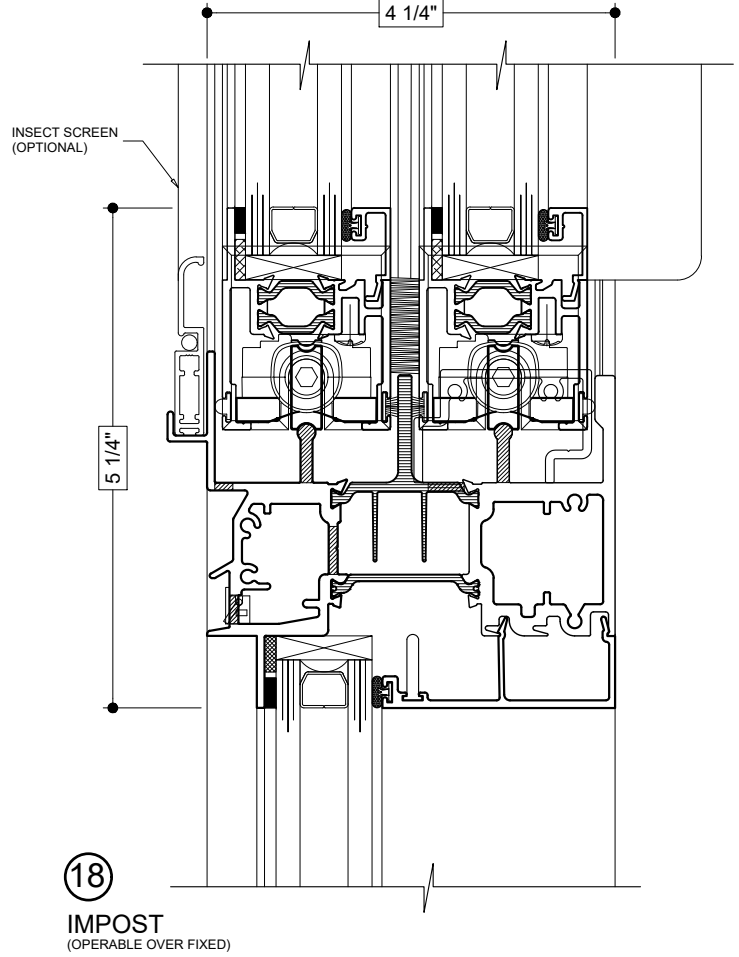
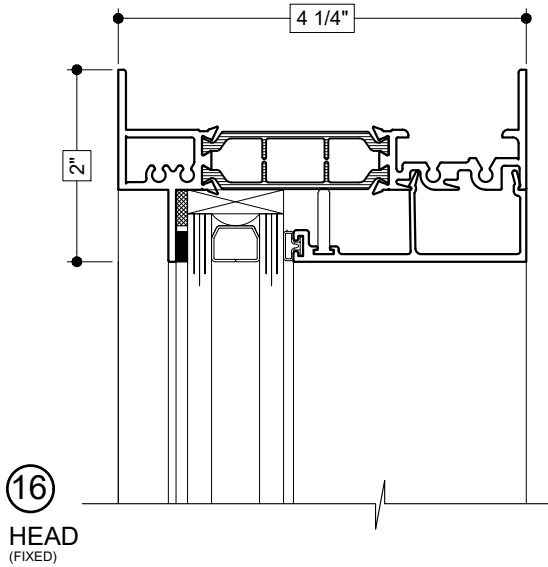
**14**  
 MEETING RAIL



**15**  
 RIGHT JAMB

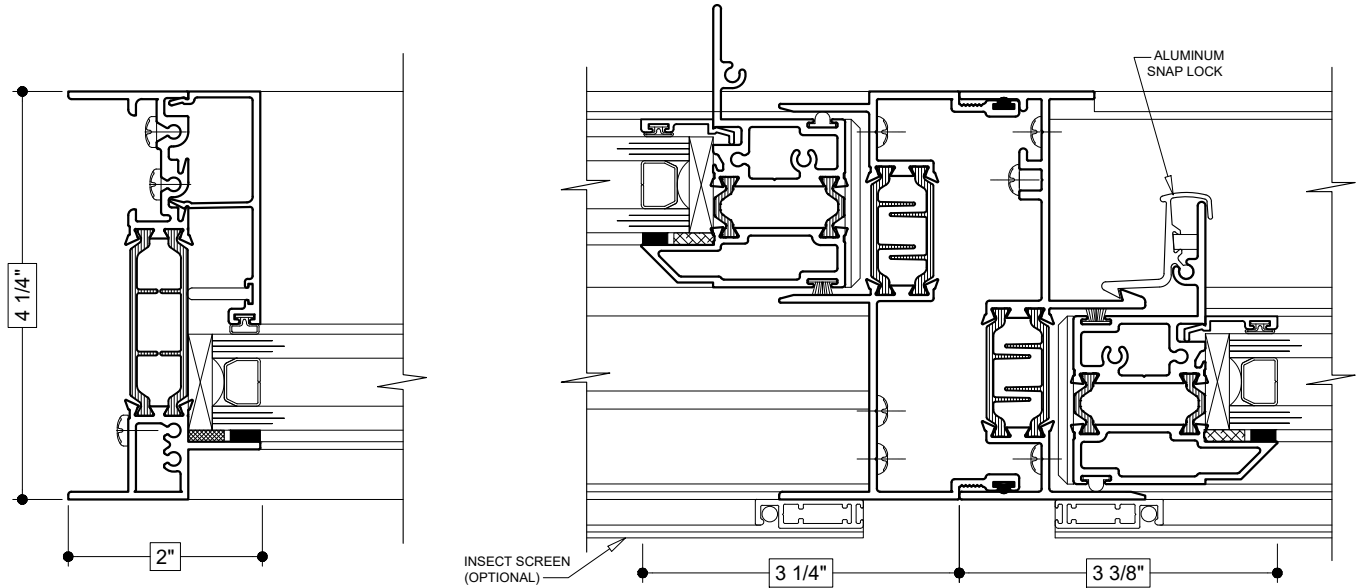
Details shown reflect the most commonly used configurations.  
 Contact AWM for additional details and/or assistance.

5/13/19



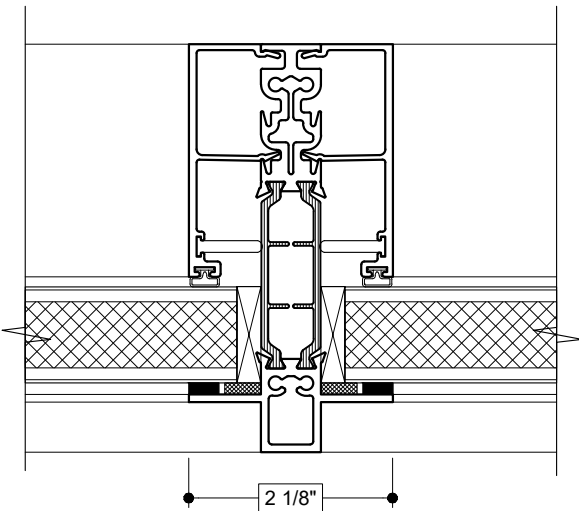
Details shown reflect the most commonly used configurations.  
 Contact AWM for additional details and/or assistance.

5/13/19

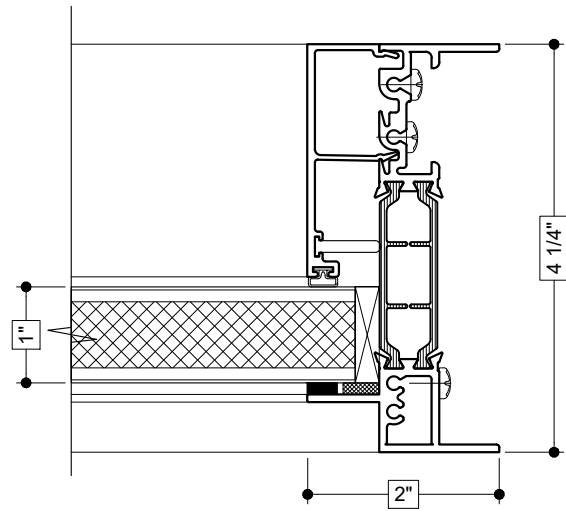


②0  
 LEFT JAMB  
 (FIXED)

②1  
 MEETING RAIL



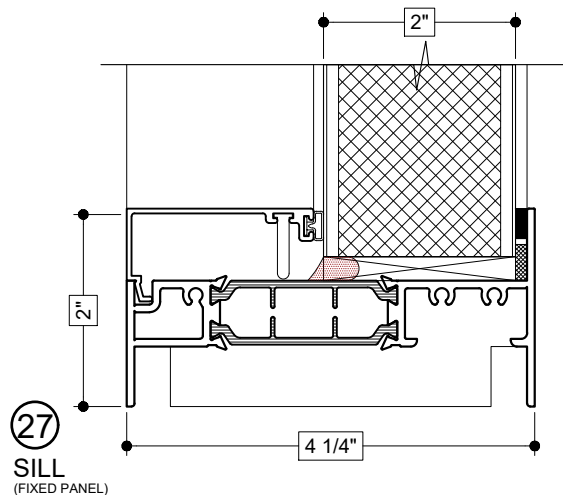
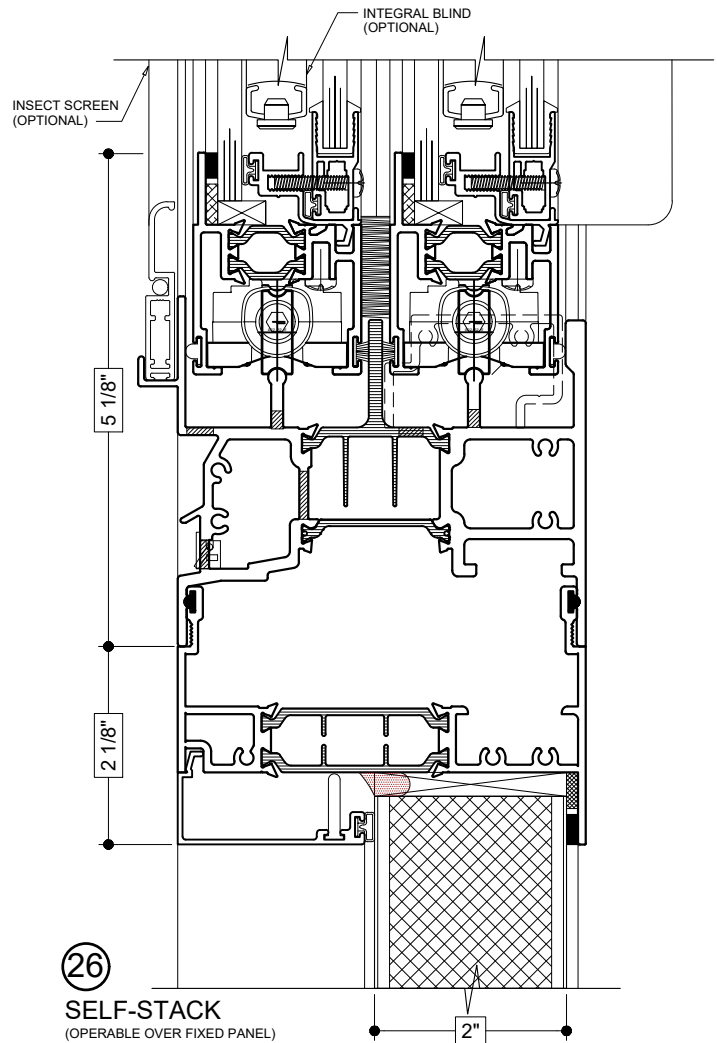
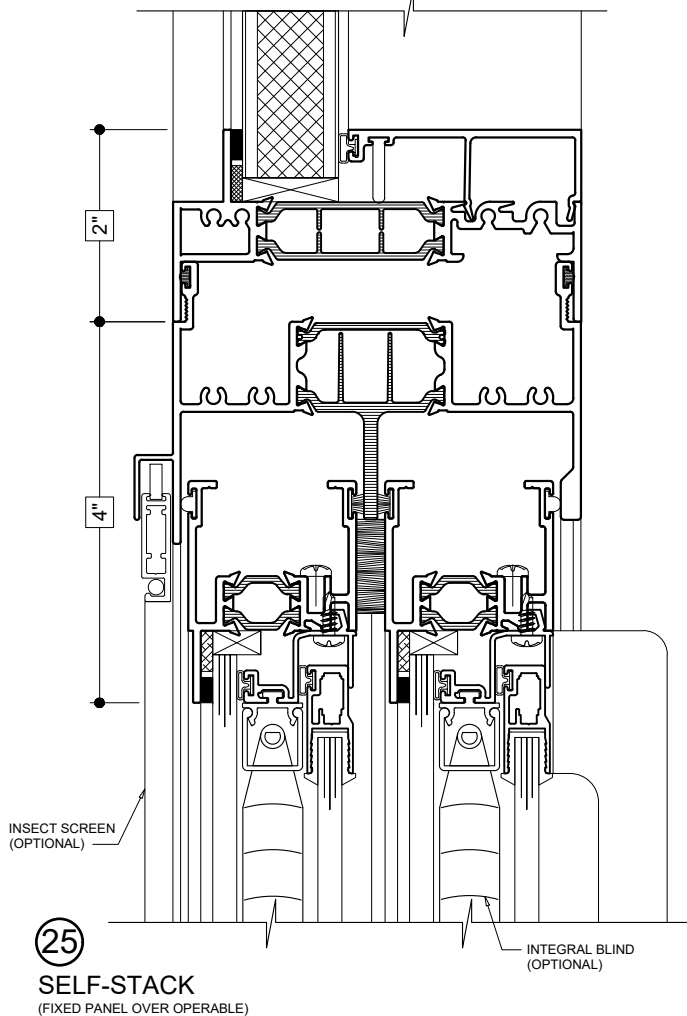
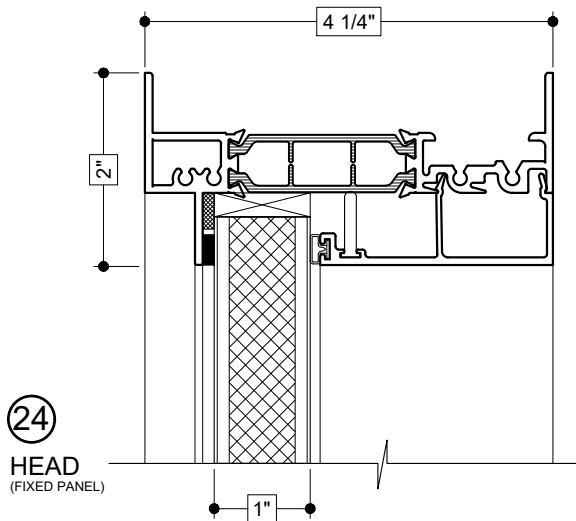
②2  
 TRUE MUNTIN  
 (FIXED PANEL TO FIXED PANEL)



②3  
 RIGHT JAMB  
 (FIXED PANEL)

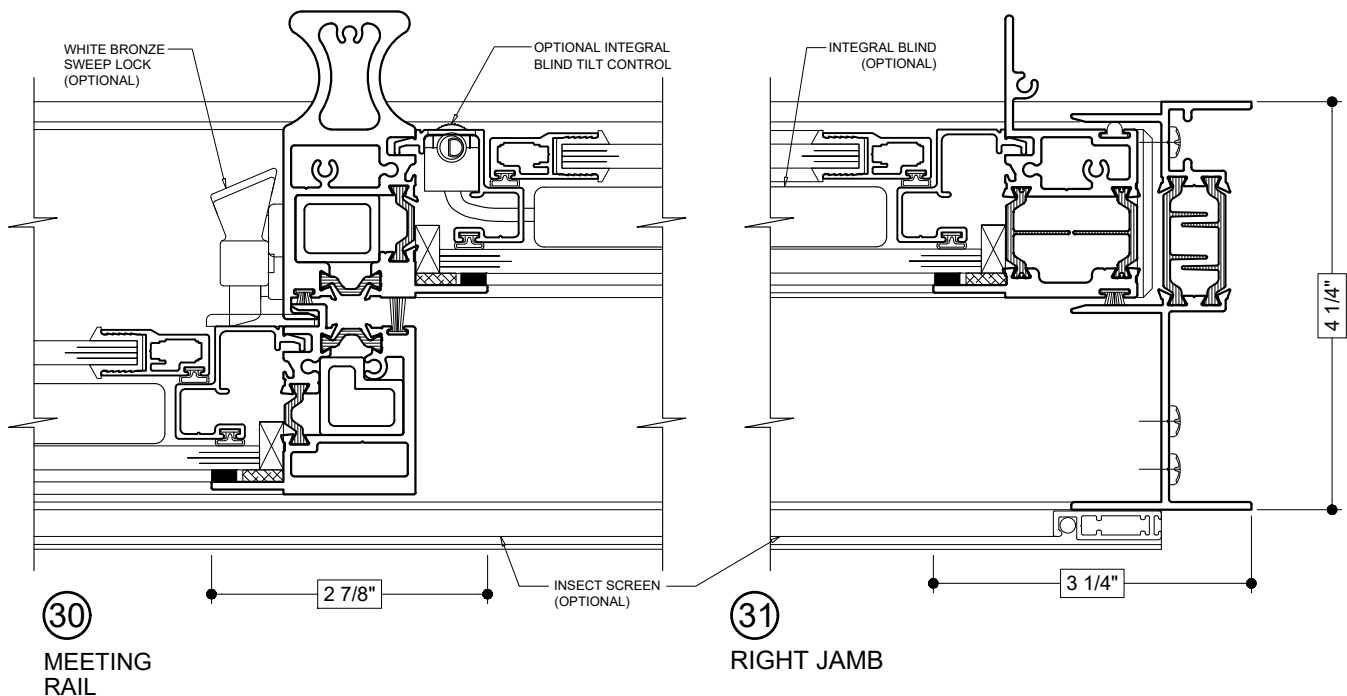
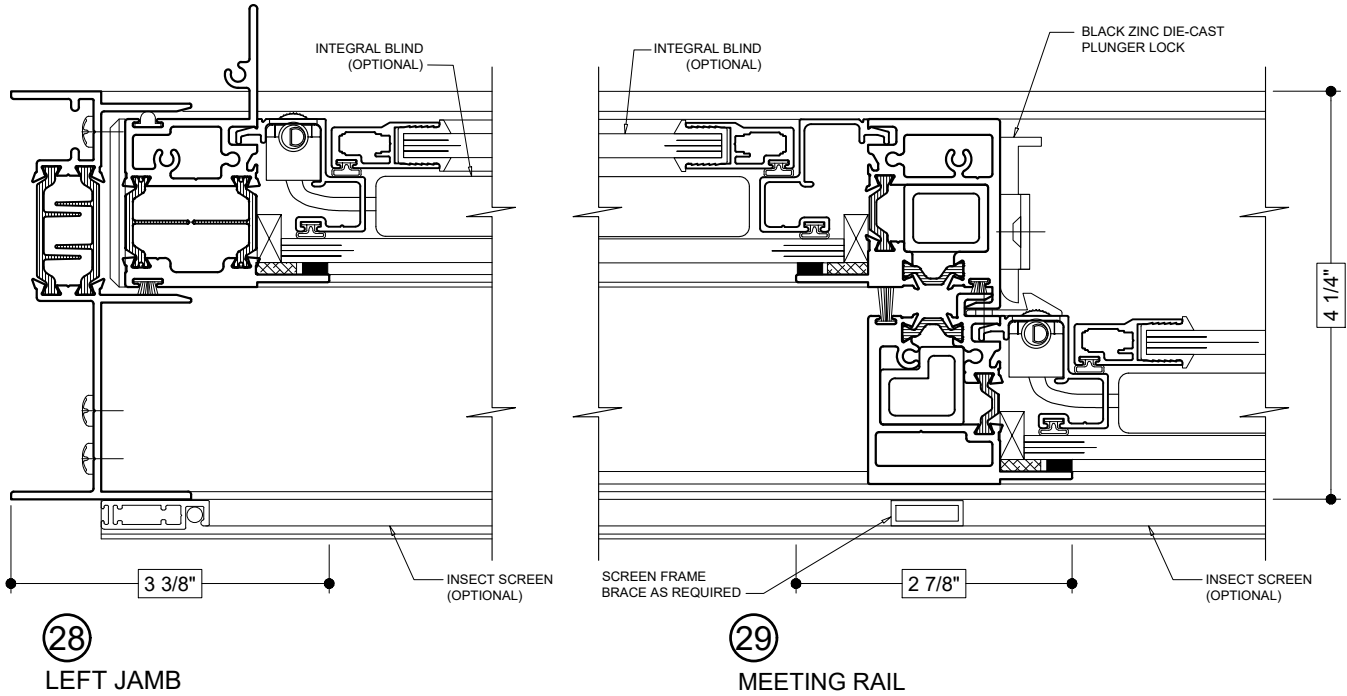
Details shown reflect the most commonly used configurations.  
 Contact AWM for additional details and/or assistance.

5/13/19



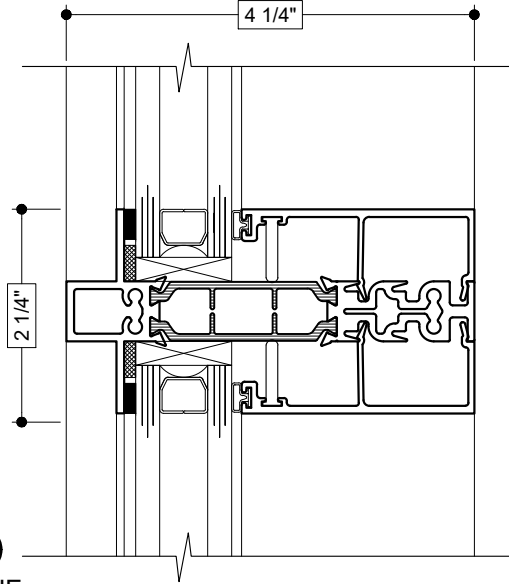
Details shown reflect the most commonly used configurations.  
 Contact AWM for additional details and/or assistance.

5/13/19

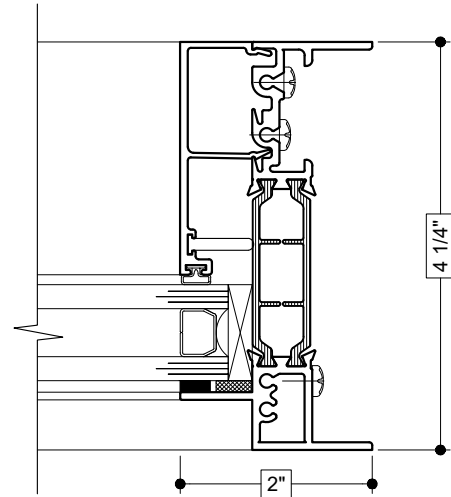


Details shown reflect the most commonly used configurations.  
 Contact AWM for additional details and/or assistance.

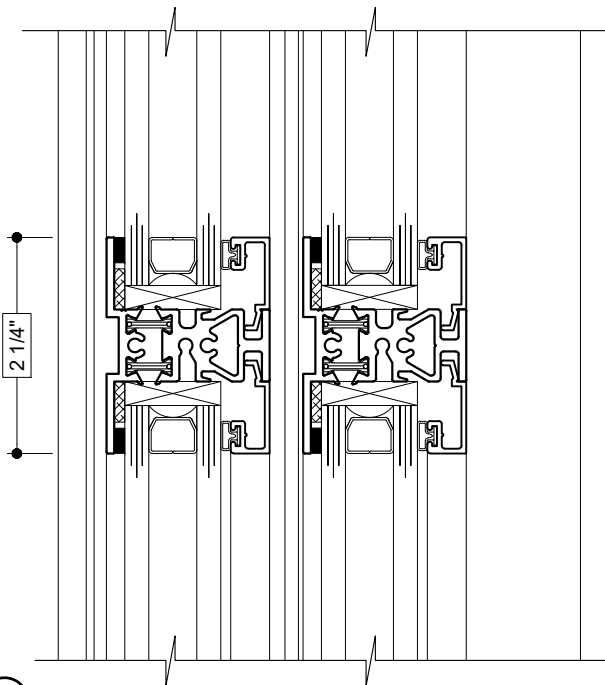
5/13/19



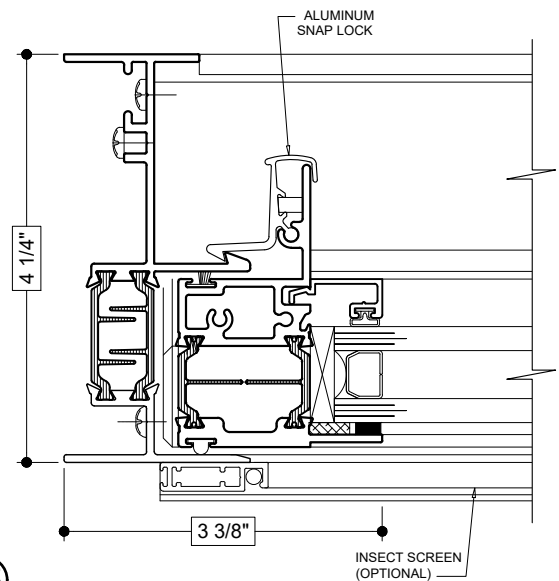
32  
 TRUE  
 MUNTIN



34  
 RIGHT JAMB  
 (FIXED)



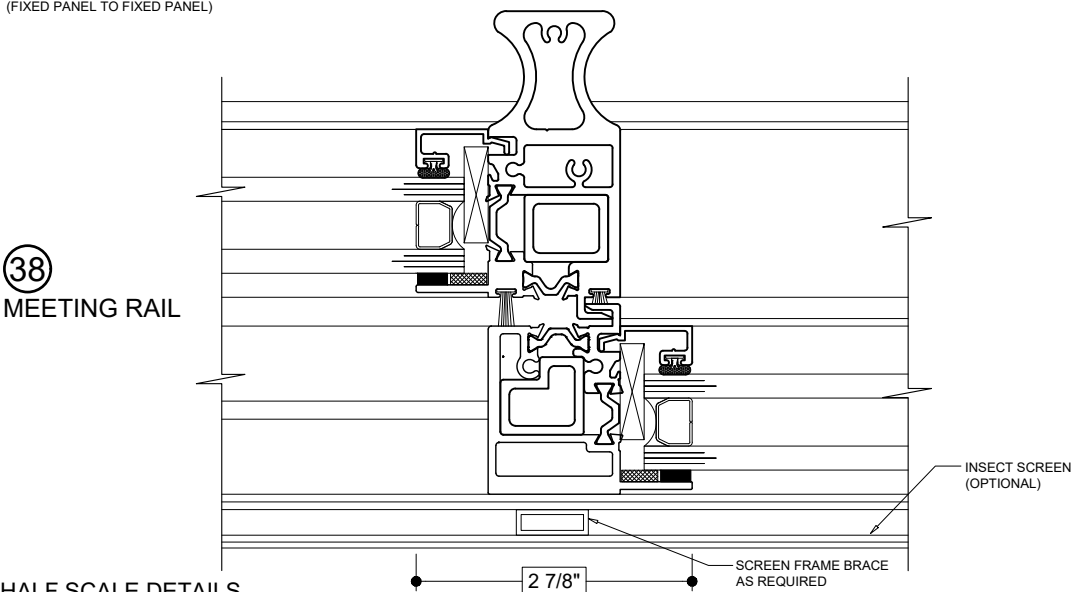
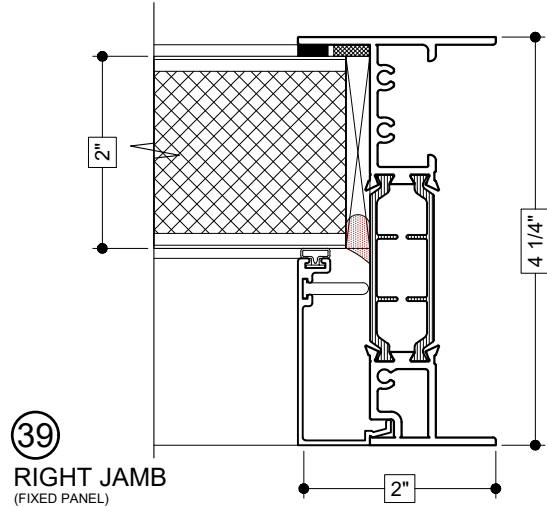
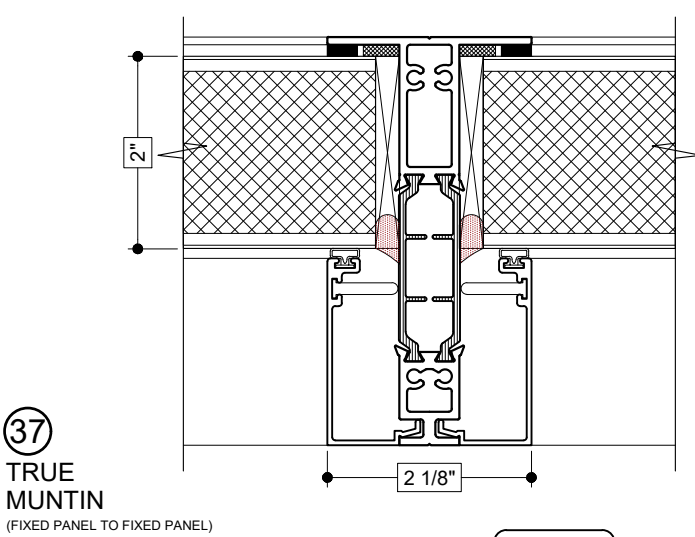
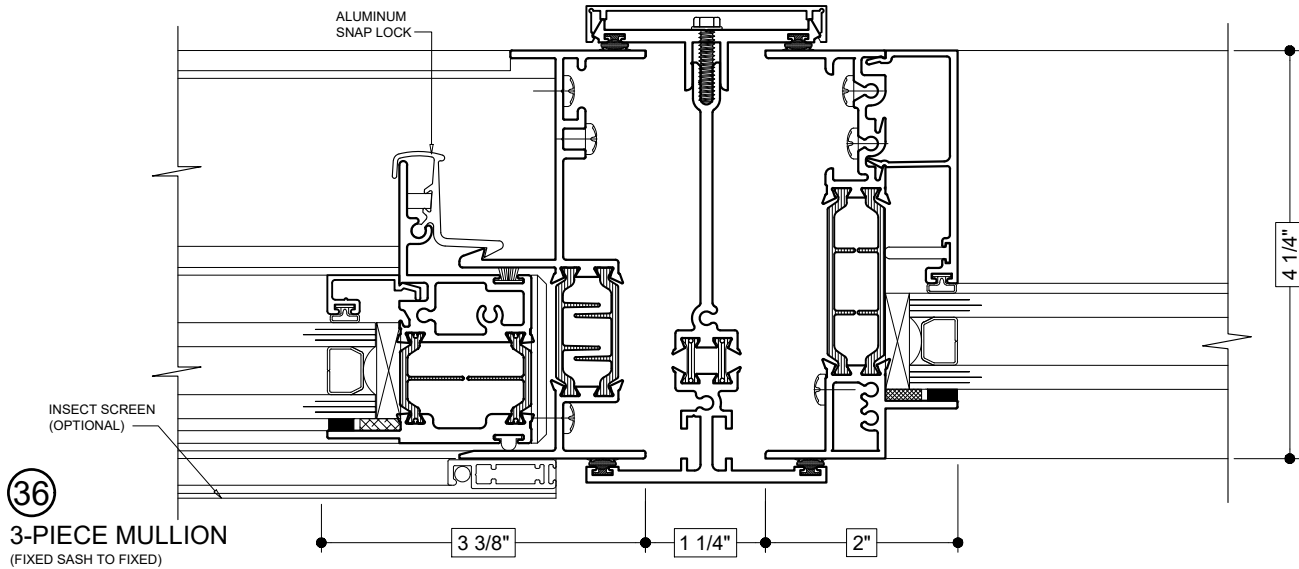
33  
 TRUE  
 MUNTIN



35  
 LEFT JAMB

Details shown reflect the most commonly used configurations.  
Contact AWM for additional details and/or assistance.

5/13/19



Details shown reflect the most commonly used configurations.  
 Contact AWM for additional details and/or assistance.

5/13/19

Optional 2" Extended Frame

