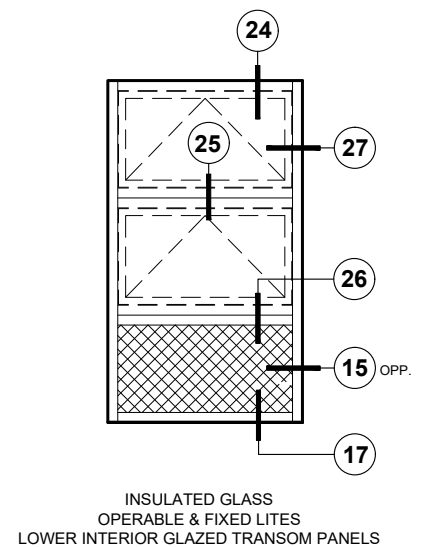
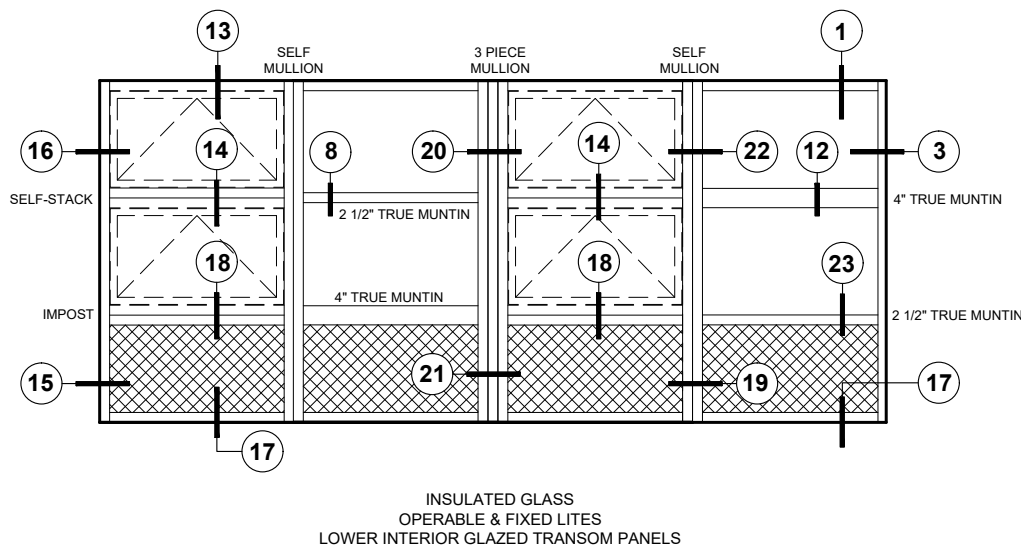
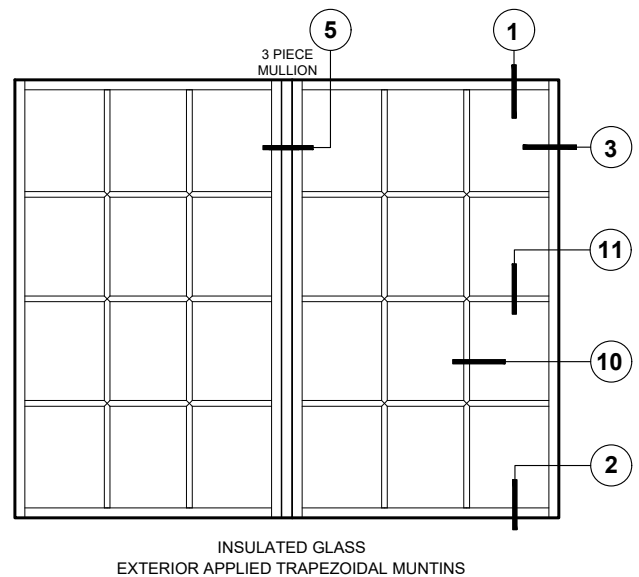
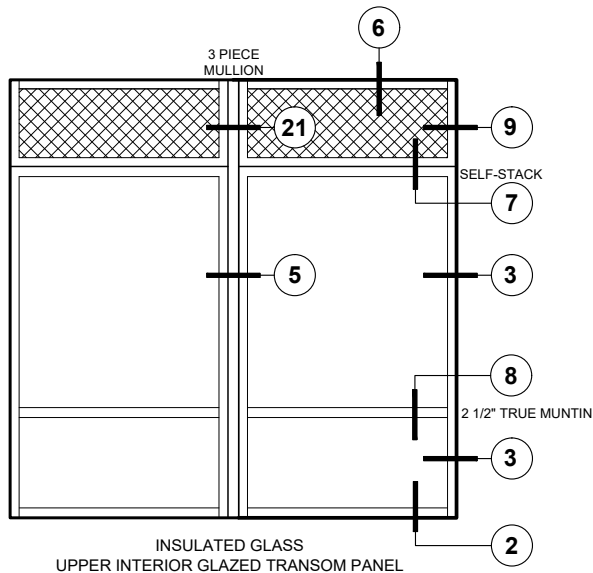
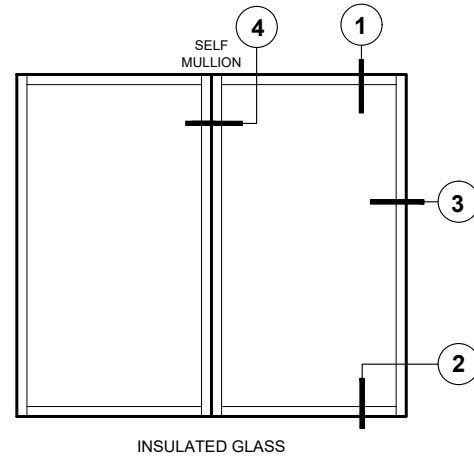
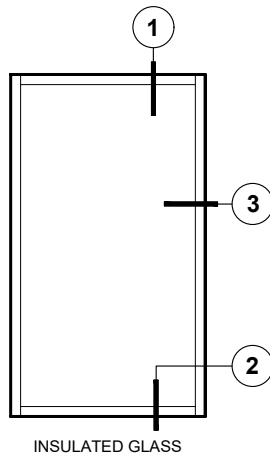


Details shown reflect the most commonly used configurations.
Contact AWM for additional details and/or assistance.

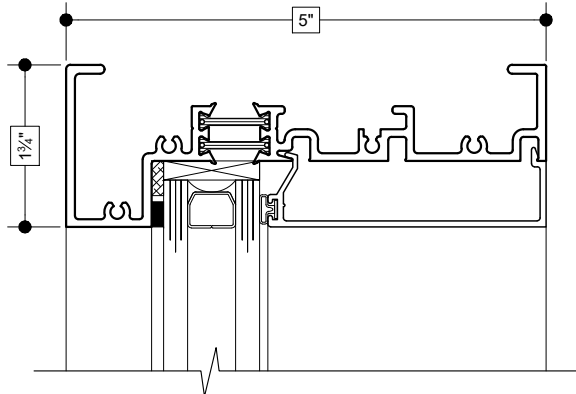
04/04/19



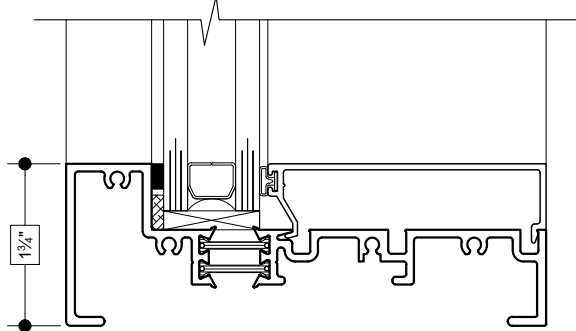
Details shown reflect the most commonly used configurations.
Contact AWM for additional details and/or assistance.

04/04/19

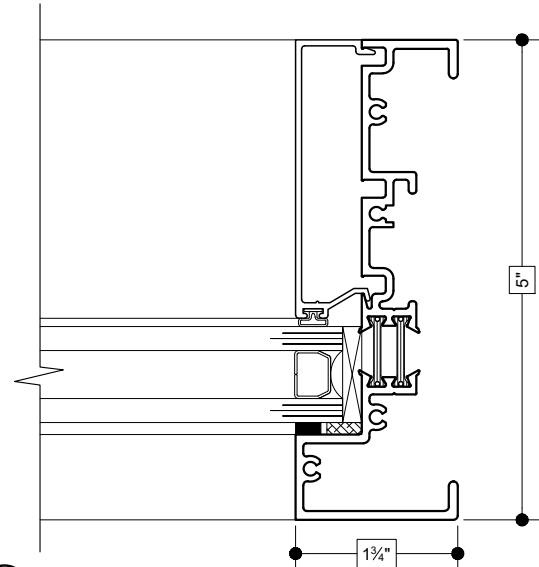
1
HEAD
(FIXED)



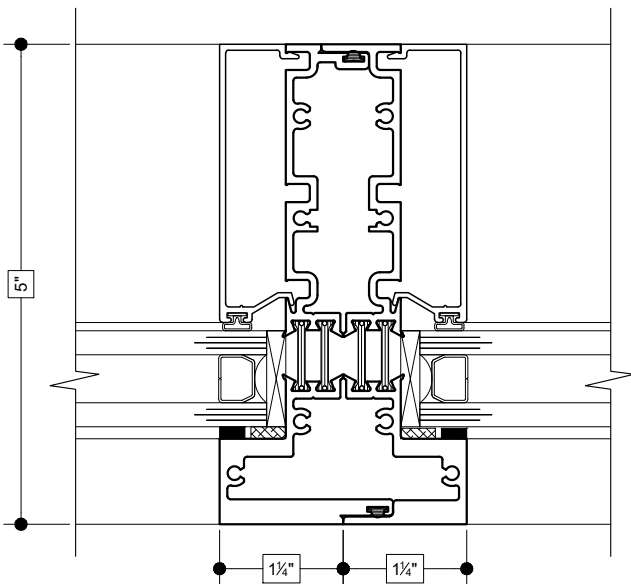
2
SILL
(FIXED)



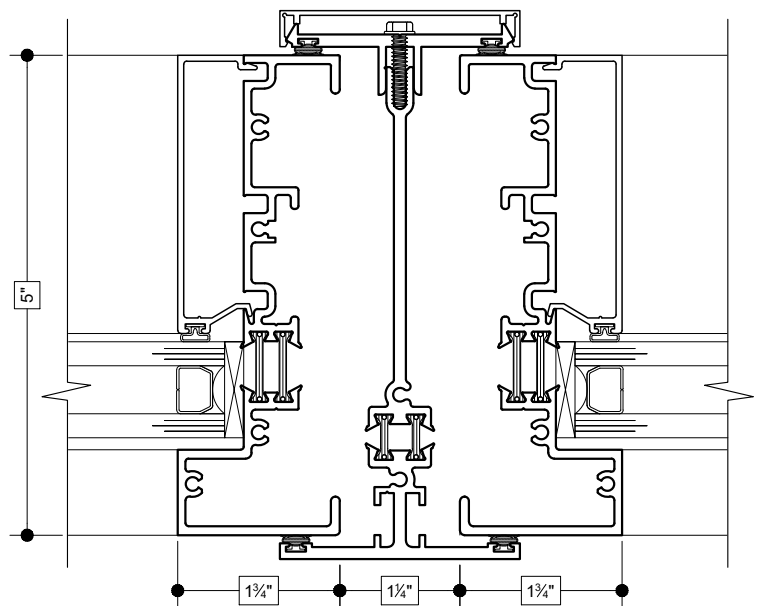
3
RIGHT JAMB
(FIXED)



4
SELF-MULLION
(FIXED TO FIXED)



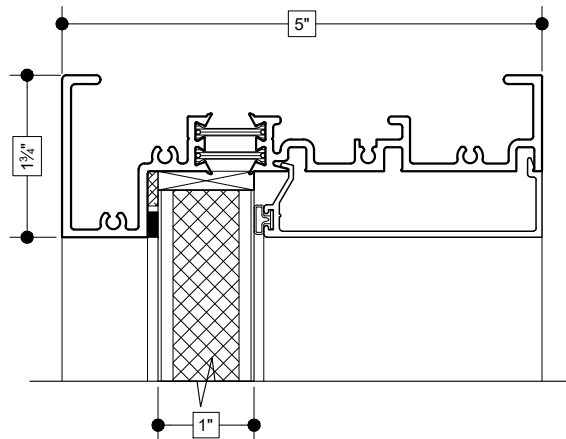
5
3-PIECE MULLION
(FIXED TO FIXED)



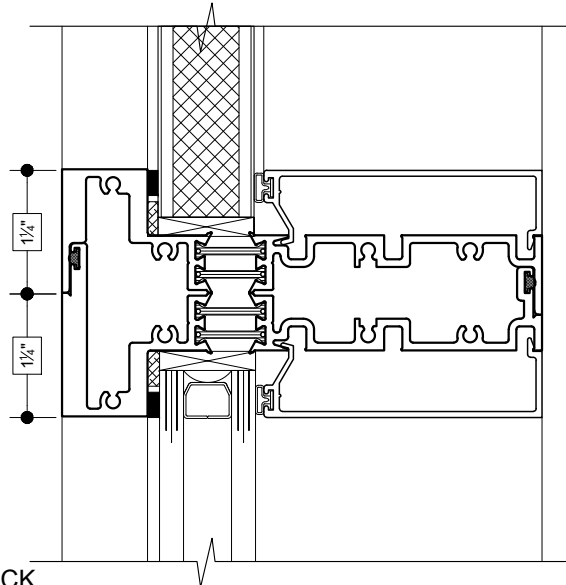
Details shown reflect the most commonly used configurations.
Contact AWM for additional details and/or assistance.

04/04/19

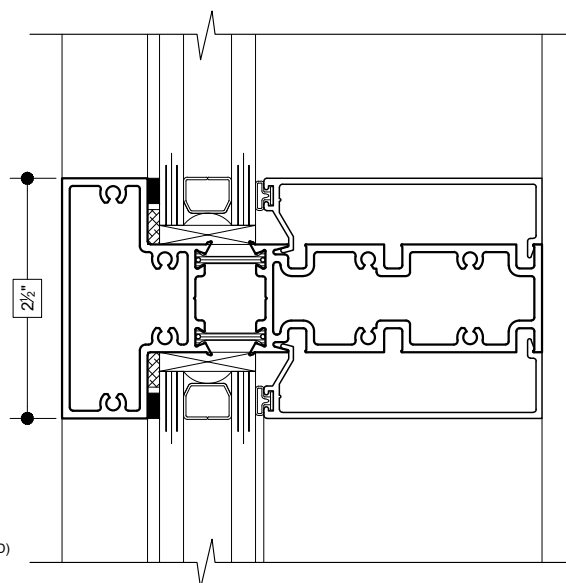
6
HEAD
(FIXED PANEL)



7
SELF-STACK
(FIXED PANEL OVER FIXED)

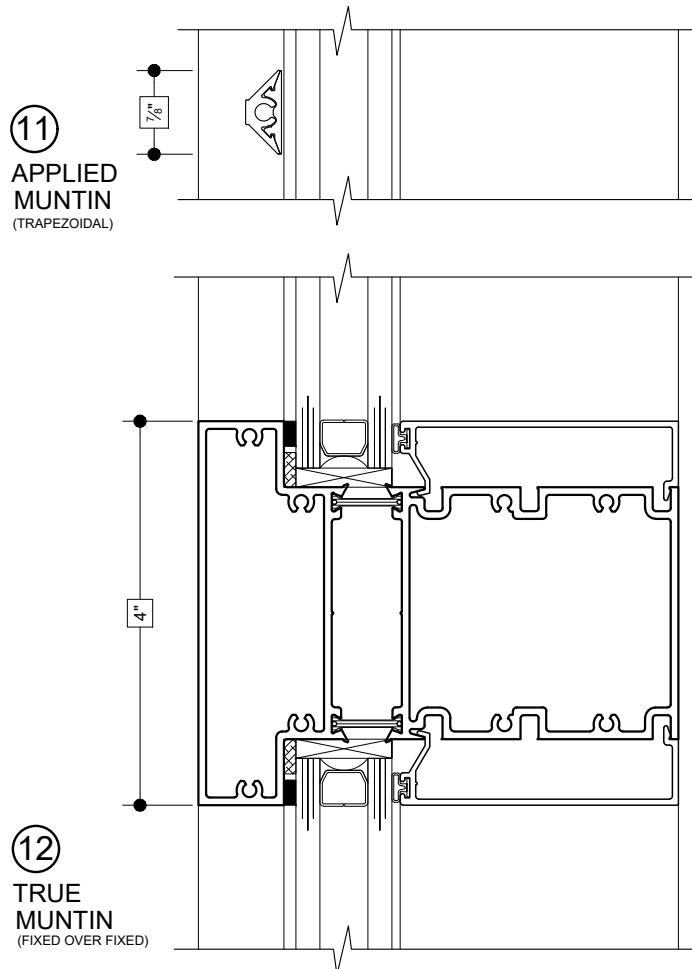
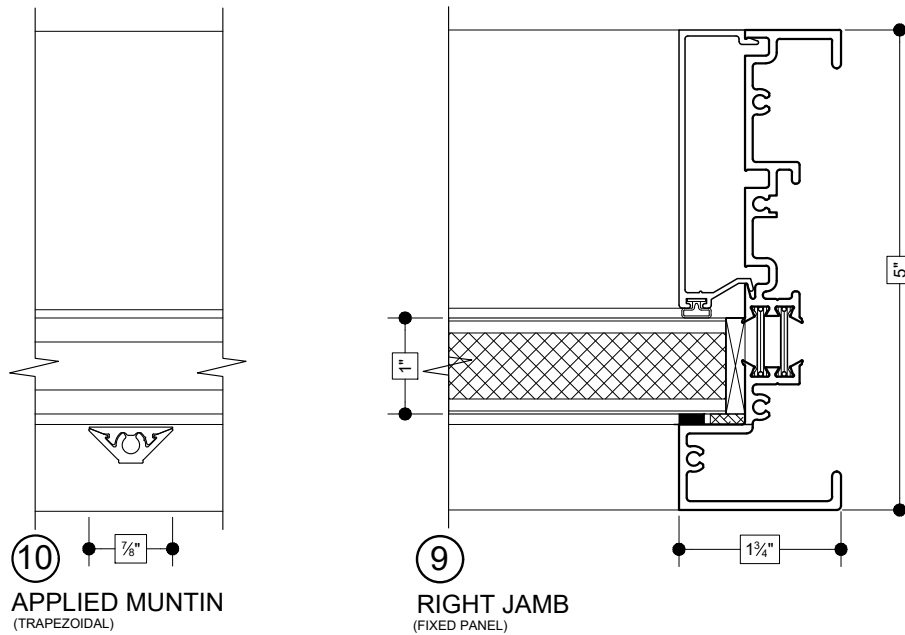


8
TRUE
MUNTIN
(FIXED OVER FIXED)



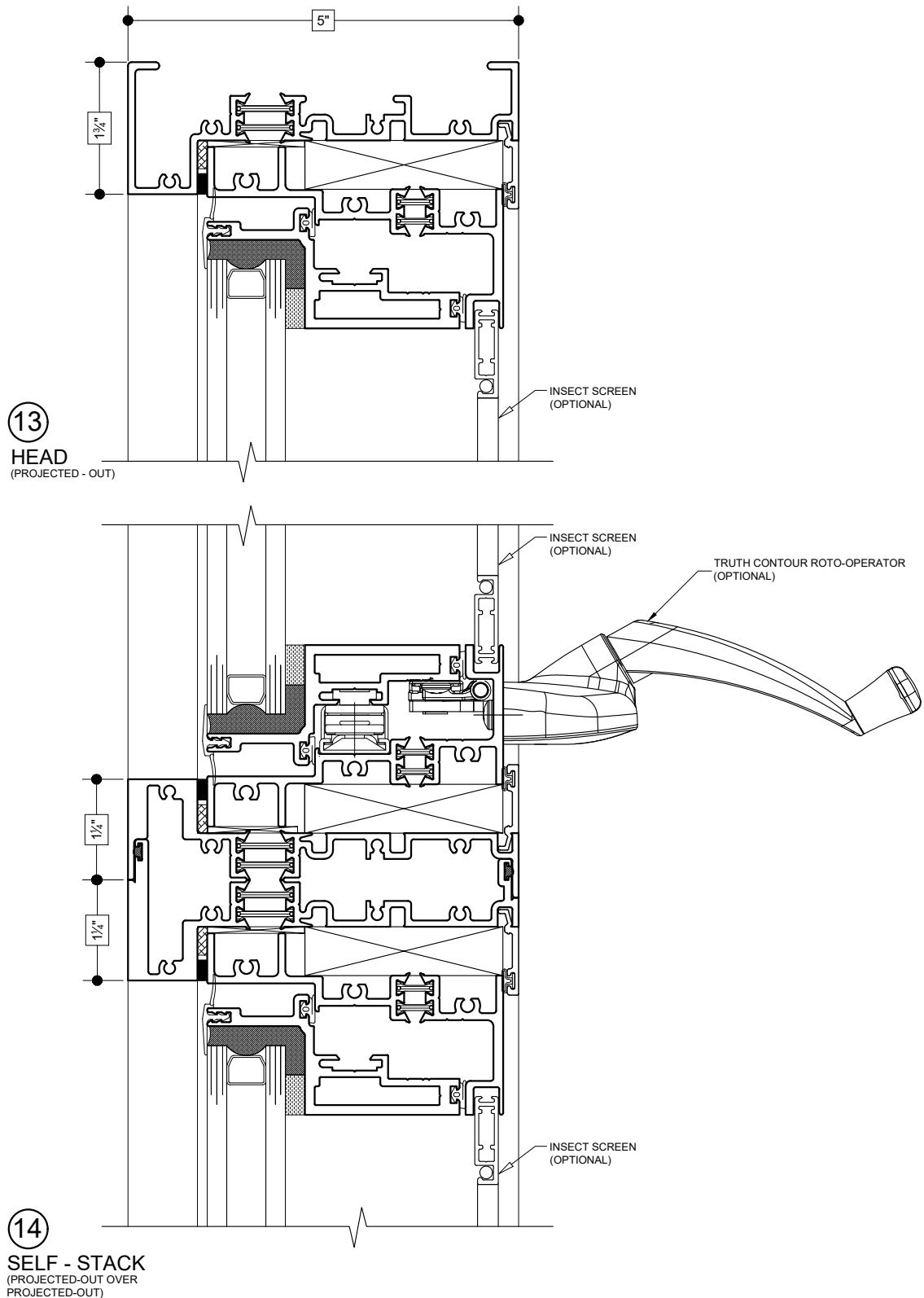
Details shown reflect the most commonly used configurations.
Contact AWM for additional details and/or assistance.

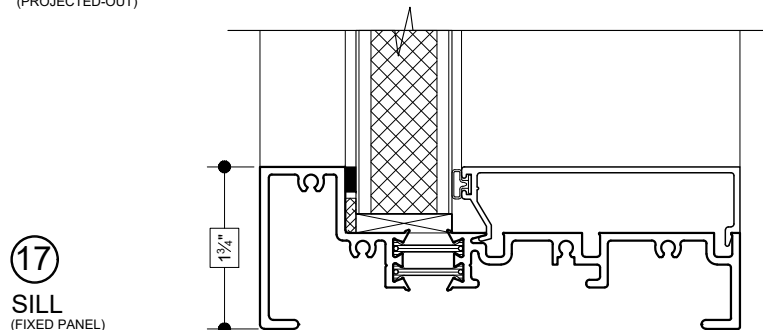
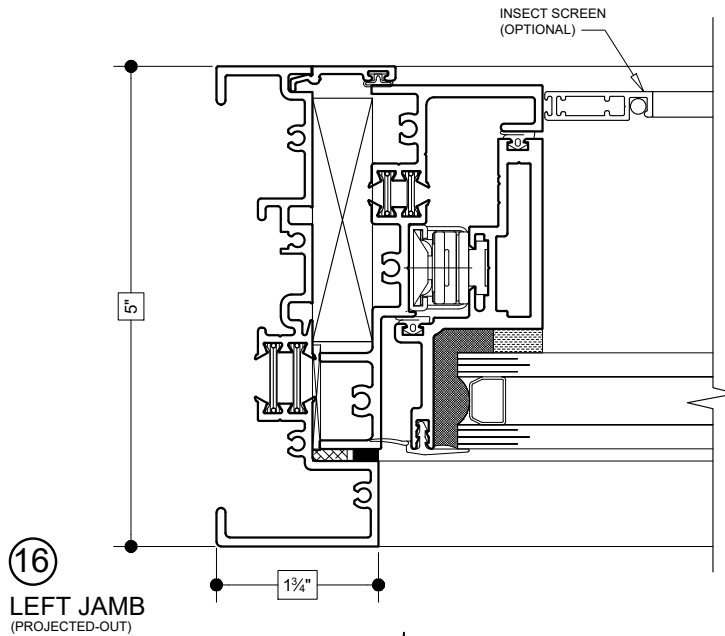
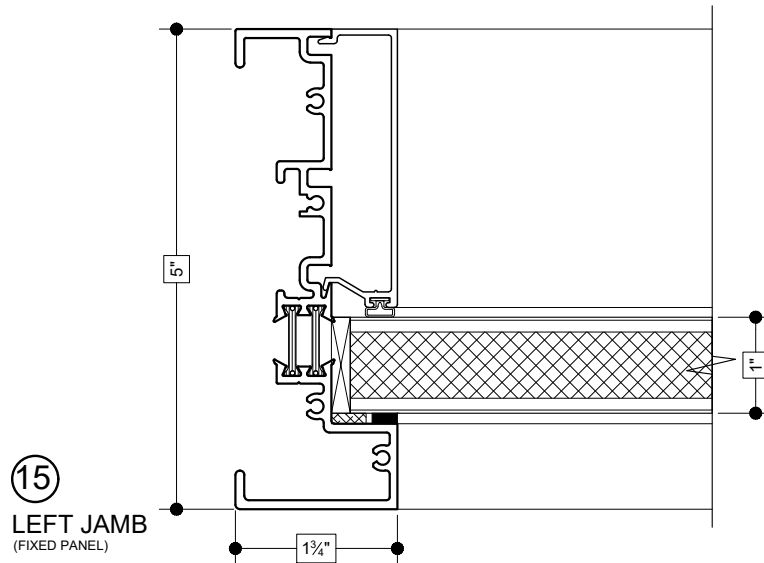
04/04/19



Details shown reflect the most commonly used configurations.
Contact AWM for additional details and/or assistance.

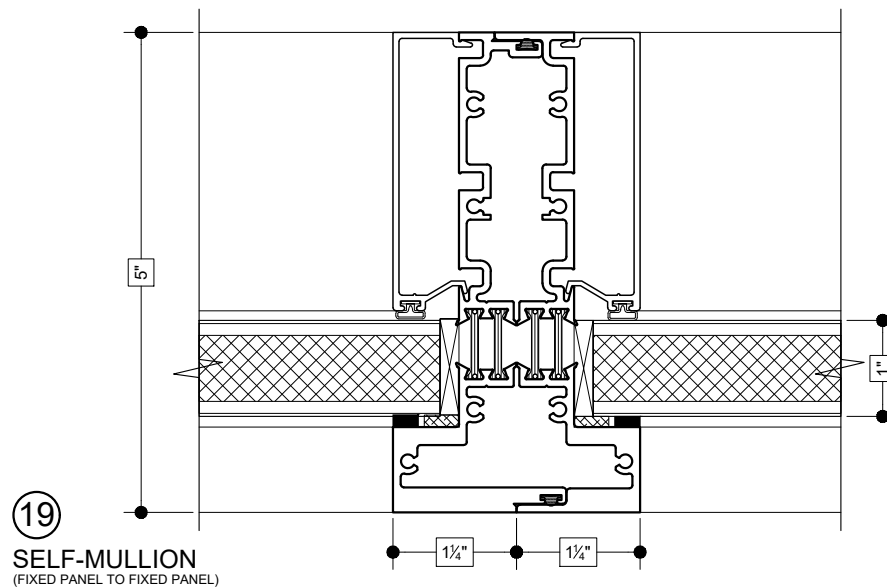
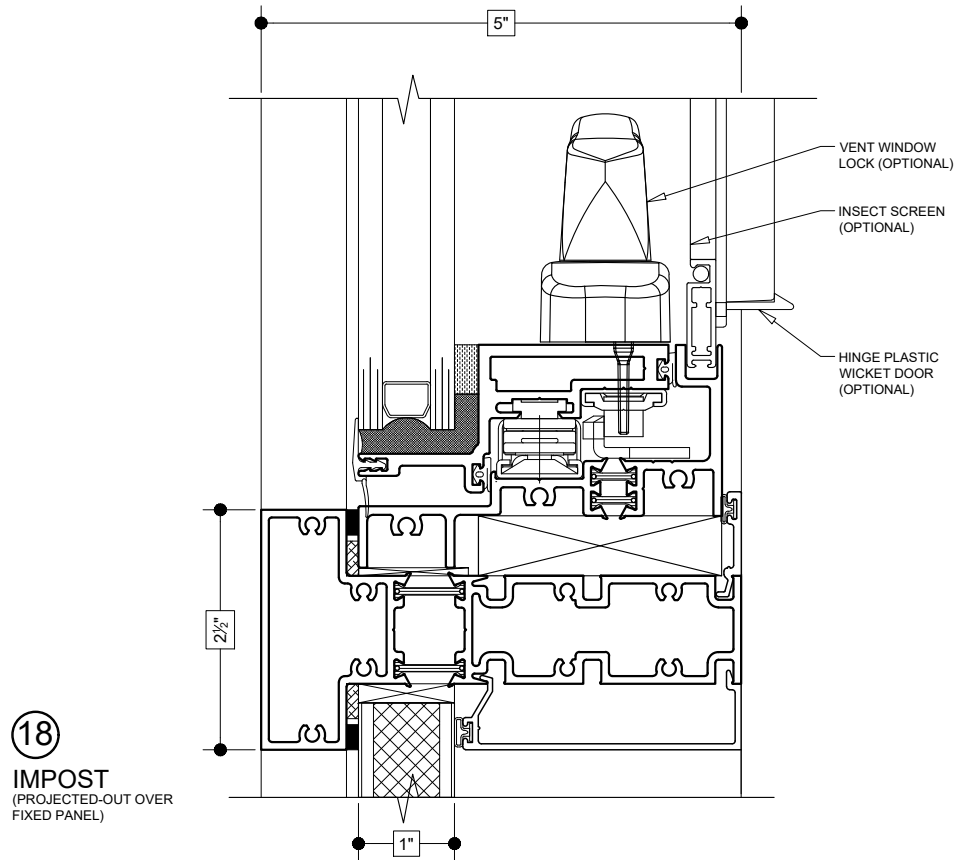
04/04/19





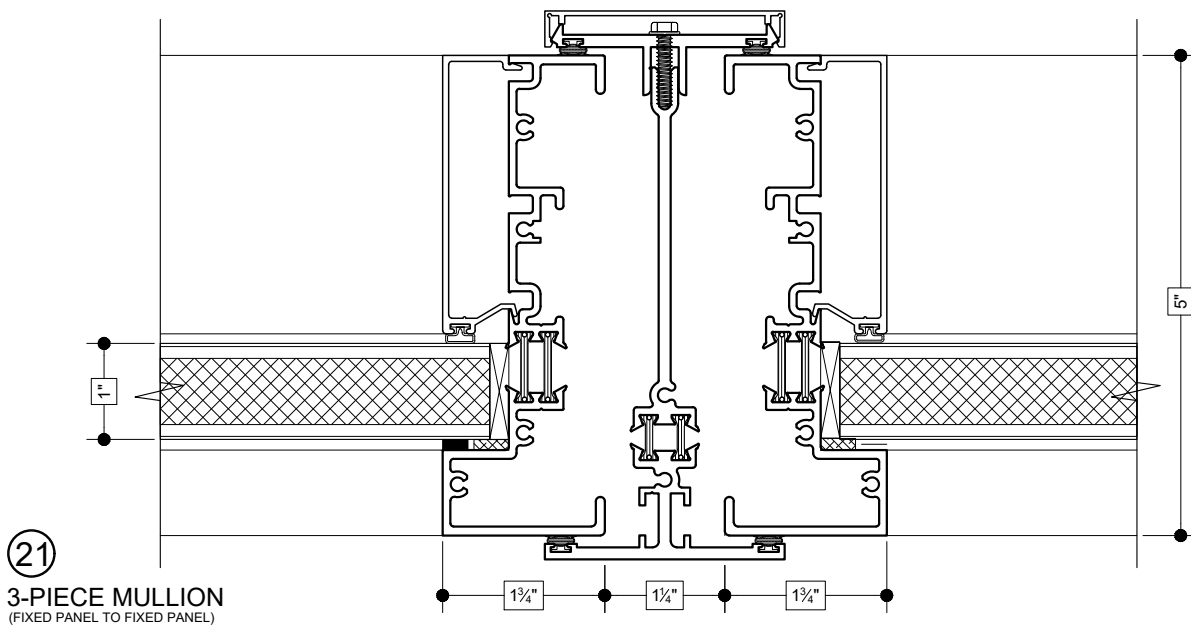
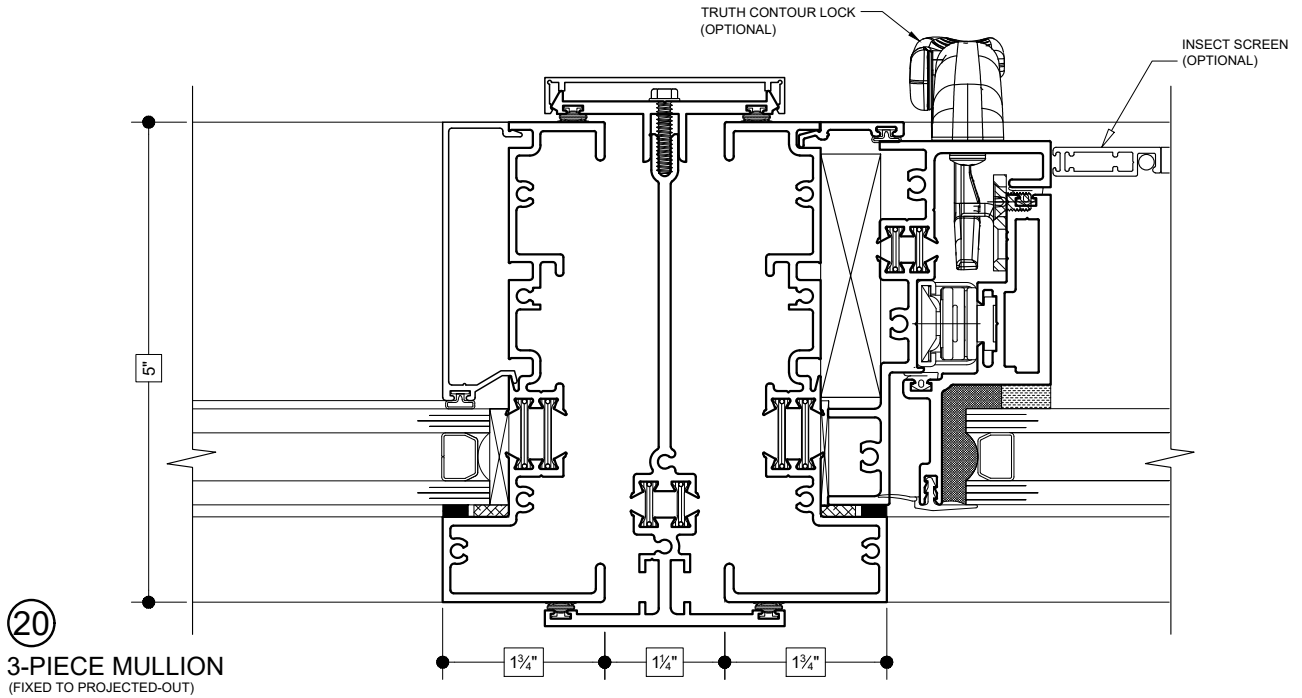
Details shown reflect the most commonly used configurations.
Contact AWM for additional details and/or assistance.

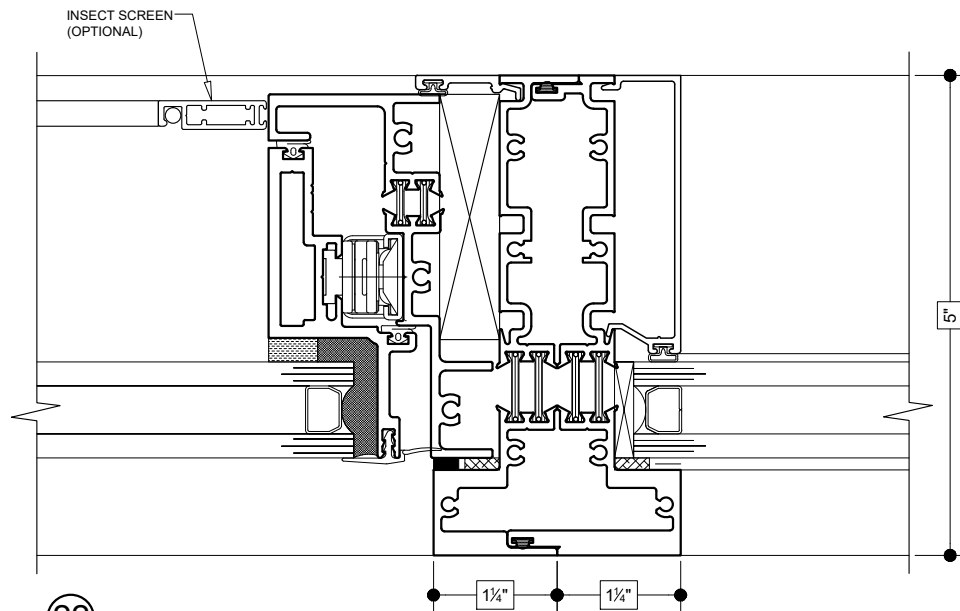
04/04/19



Details shown reflect the most commonly used configurations.
Contact AWM for additional details and/or assistance.

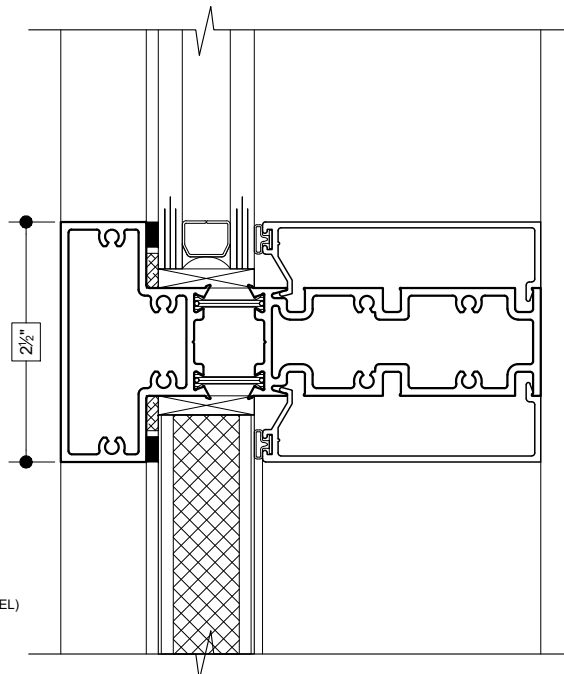
04/04/19





22

SELF-MULLION
(PROJECTED-OUT TO FIXED)



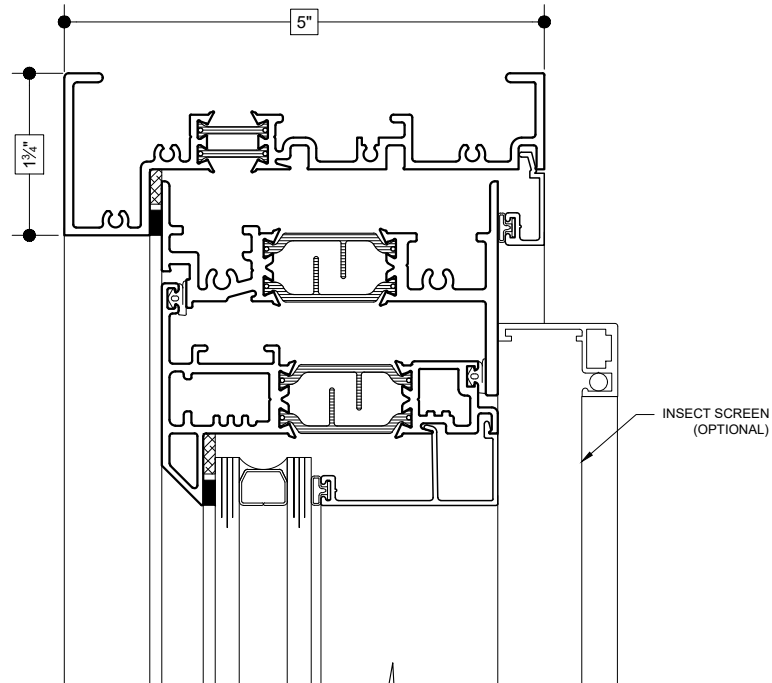
23

TRUE MUNTIN
(FIXED OVER FIXED PANEL)

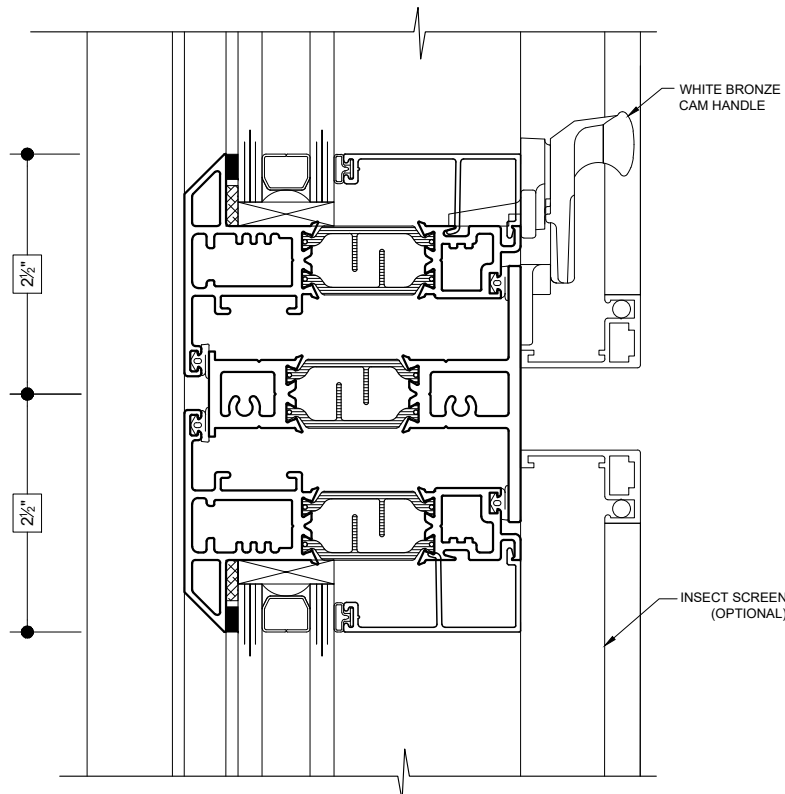
Details shown reflect the most commonly used configurations.
Contact AWM for additional details and/or assistance.

04/04/19

(24)
HEAD
(PROJECTED - OUT)

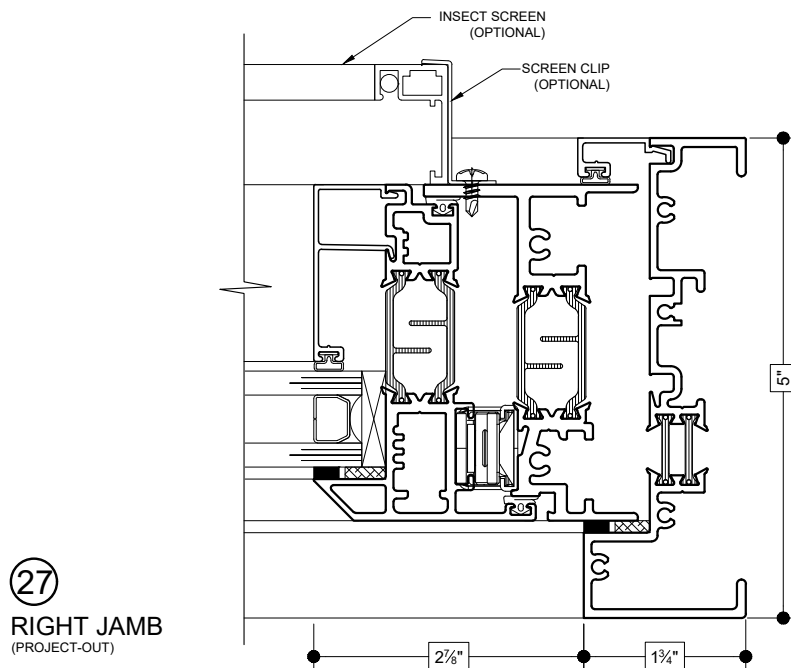
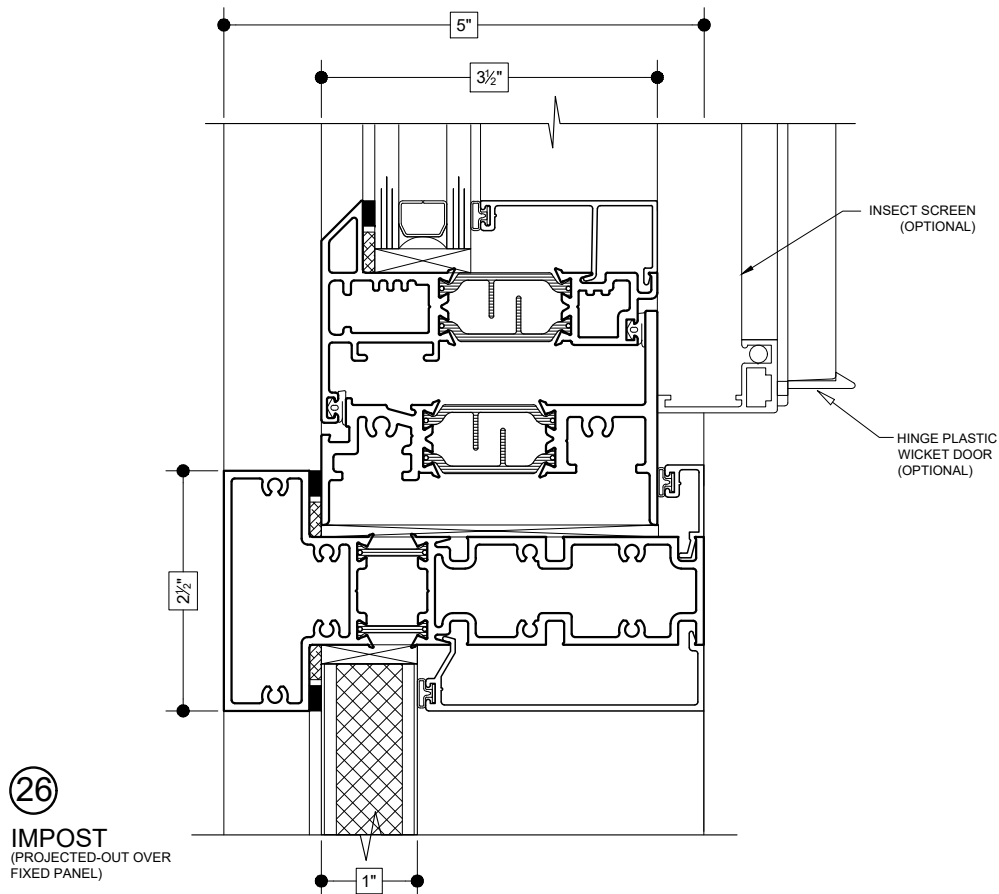


(25)
IMPOST
(PROJECT-OUT OVER
(PROJECT-OUT))



Details shown reflect the most commonly used configurations.
Contact AWM for additional details and/or assistance.

04/04/19



OPTIONAL 2 1/2" EXTENDED FRAMES

