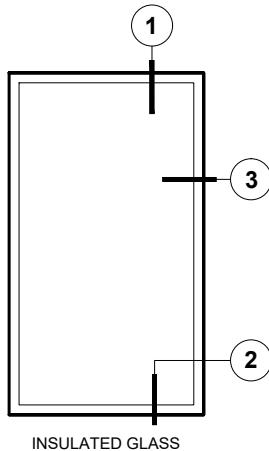
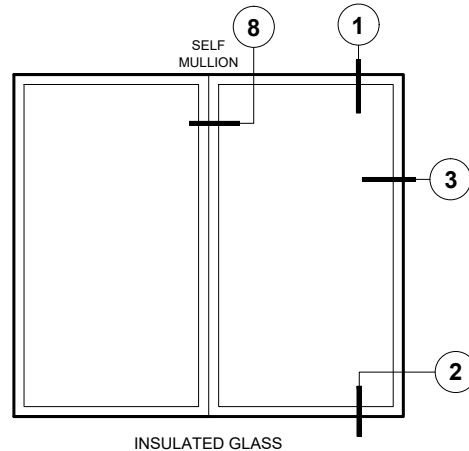


Details shown reflect the most commonly used configurations.
Contact AWM for additional details and/or assistance.

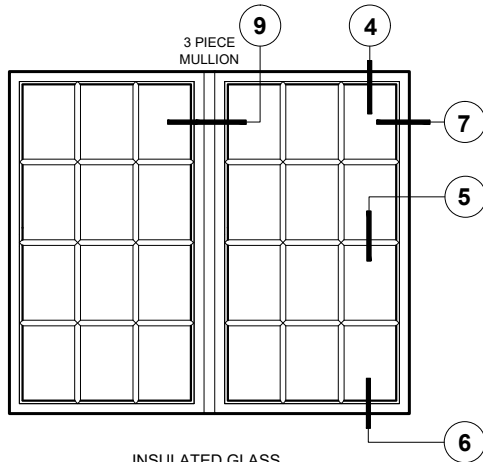
03/01/19



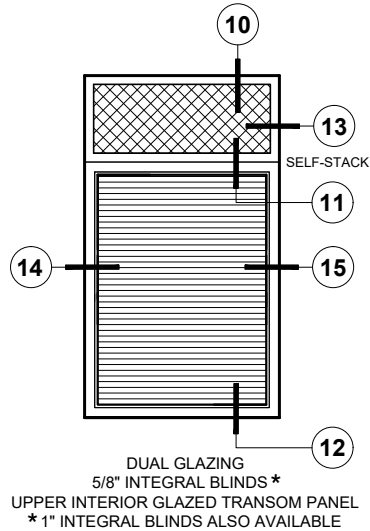
INSULATED GLASS



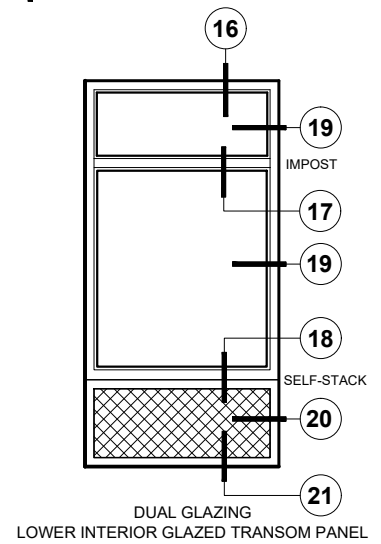
INSULATED GLASS



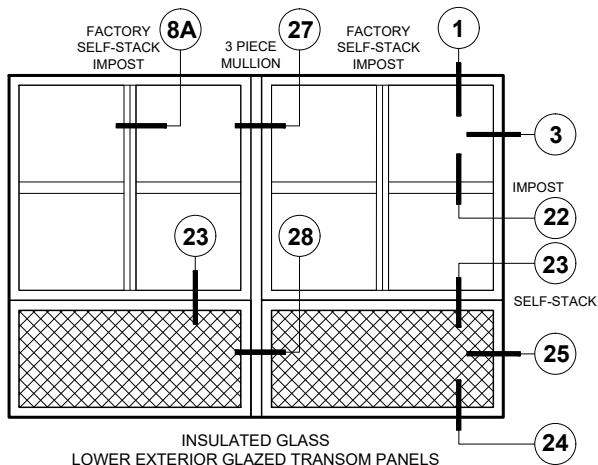
INSULATED GLASS
EXTERIOR APPLIED COLONIAL MUNTINS



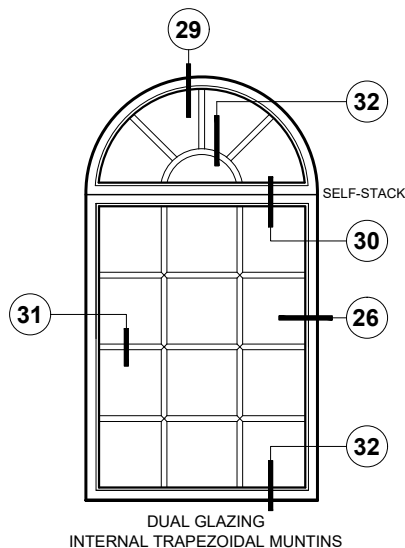
DUAL GLAZING
5/8" INTEGRAL BLINDS*
UPPER INTERIOR GLAZED TRANSOM PANEL
* 1" INTEGRAL BLINDS ALSO AVAILABLE



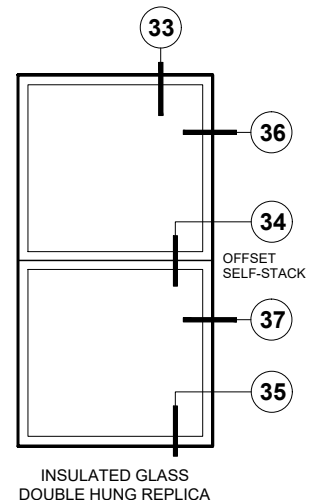
DUAL GLAZING
LOWER INTERIOR GLAZED TRANSOM PANEL



INSULATED GLASS
LOWER EXTERIOR GLAZED TRANSOM PANELS



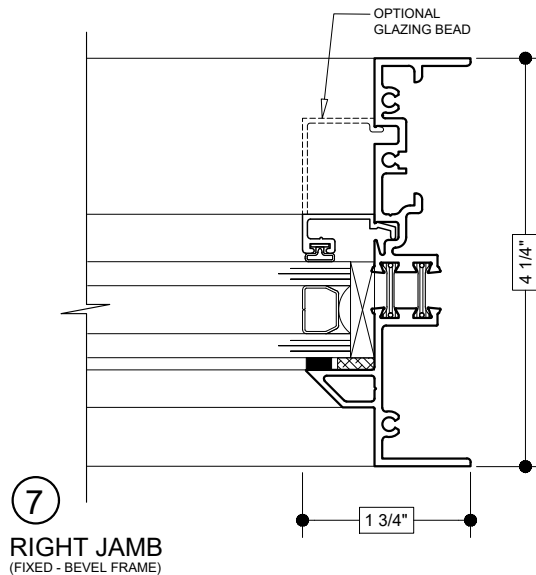
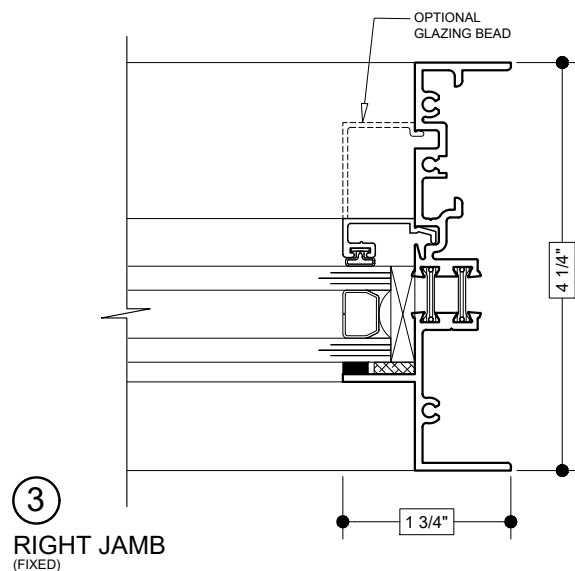
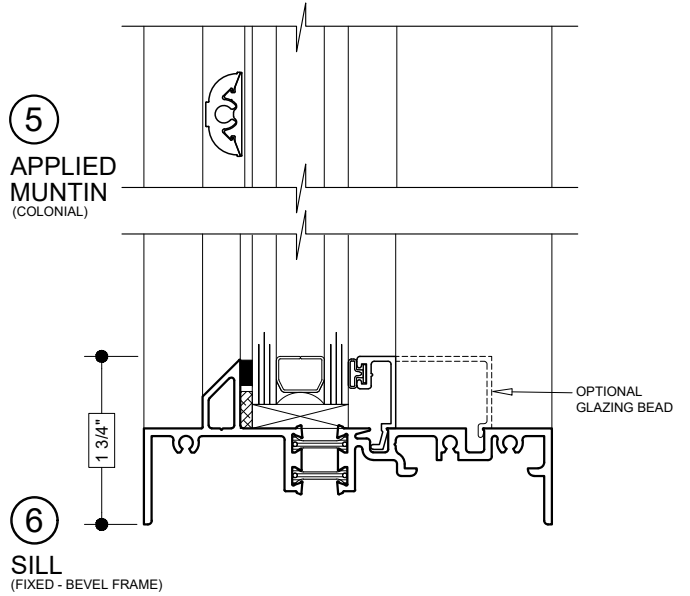
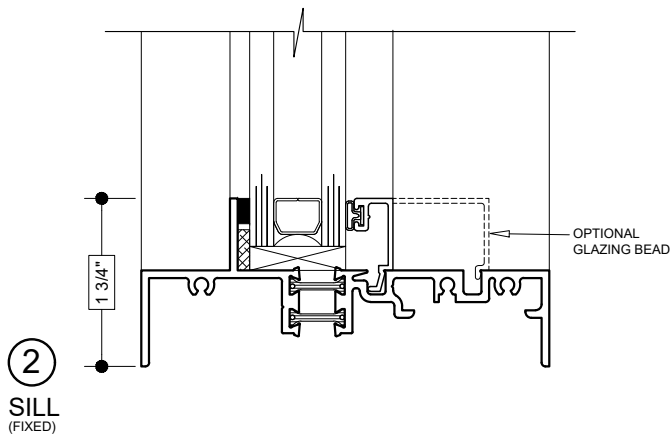
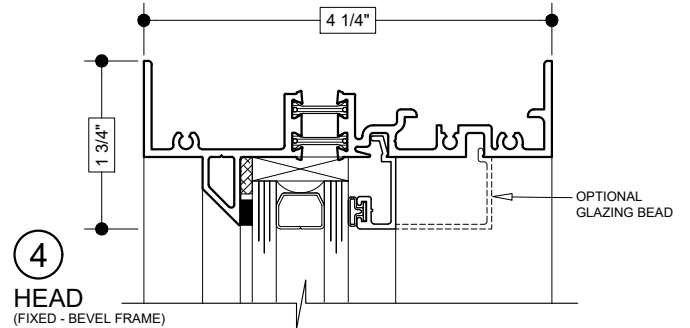
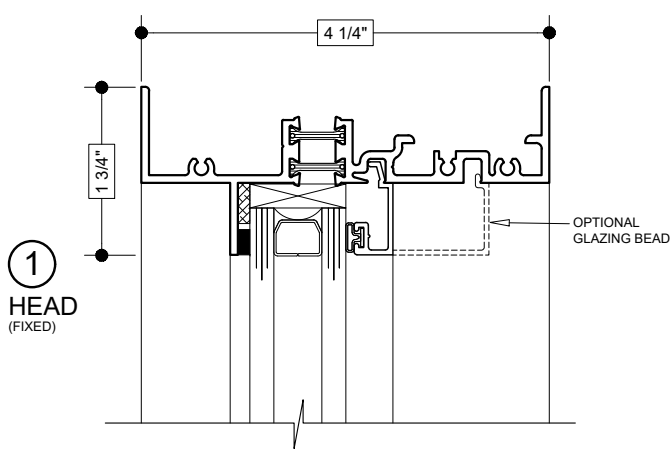
DUAL GLAZING
INTERNAL TRAPEZOIDAL MUNTINS



INSULATED GLASS
DOUBLE HUNG REPLICA

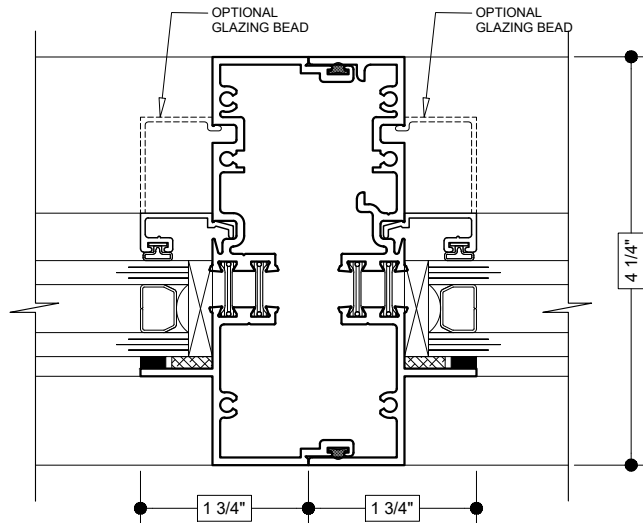
Details shown reflect the most commonly used configurations.
Contact AWM for additional details and/or assistance.

03/01/19

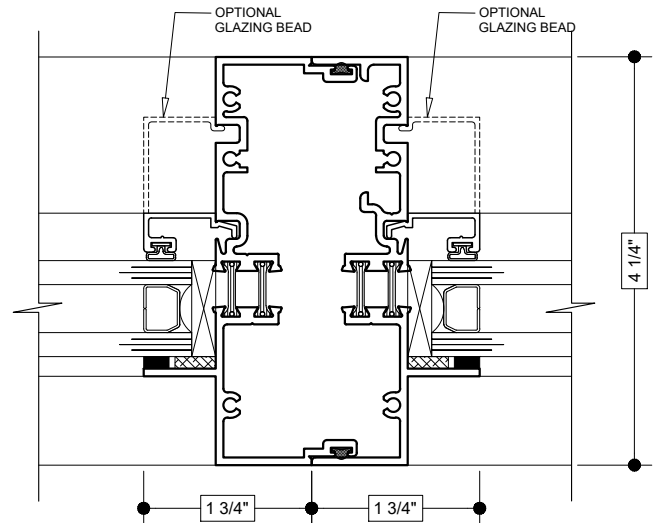


Details shown reflect the most commonly used configurations.
Contact AWM for additional details and/or assistance.

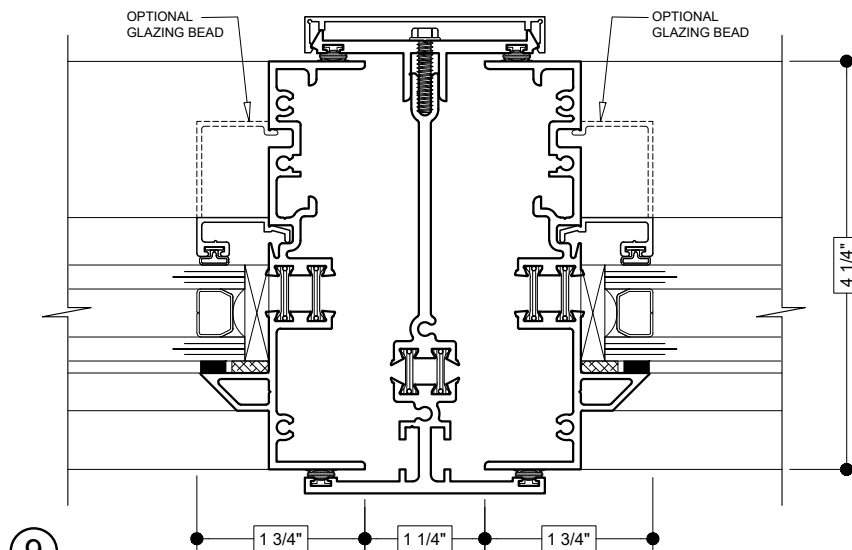
03/01/19



8
SELF-MULLION
(FIXED TO FIXED)



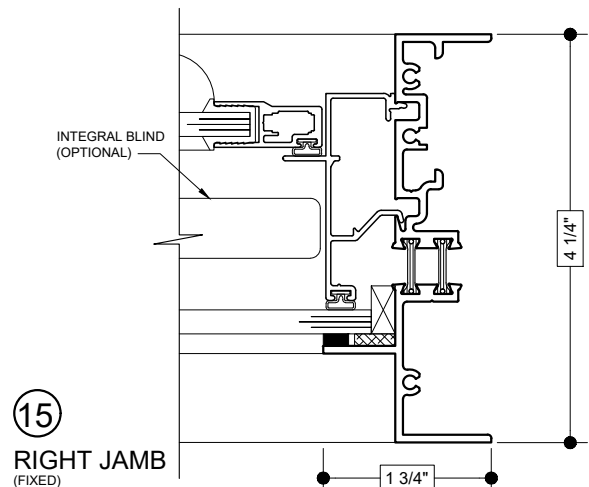
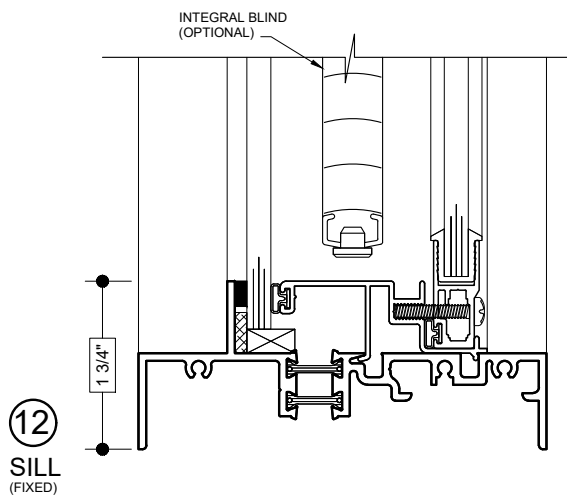
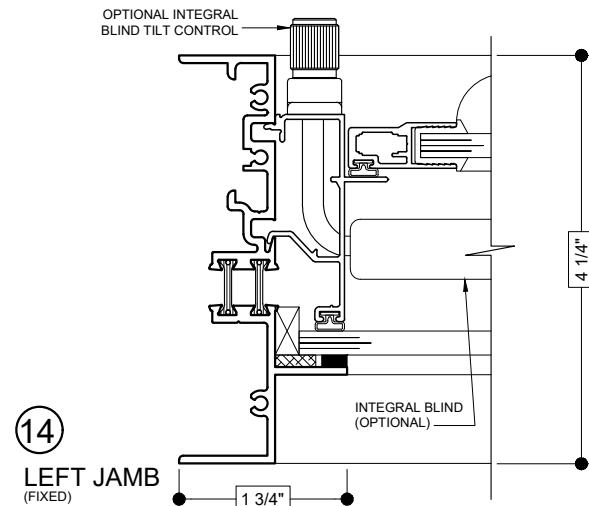
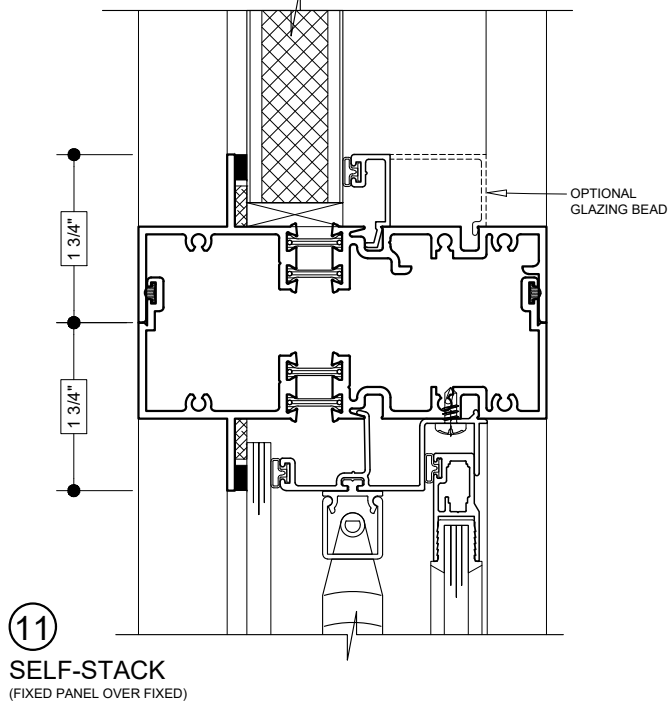
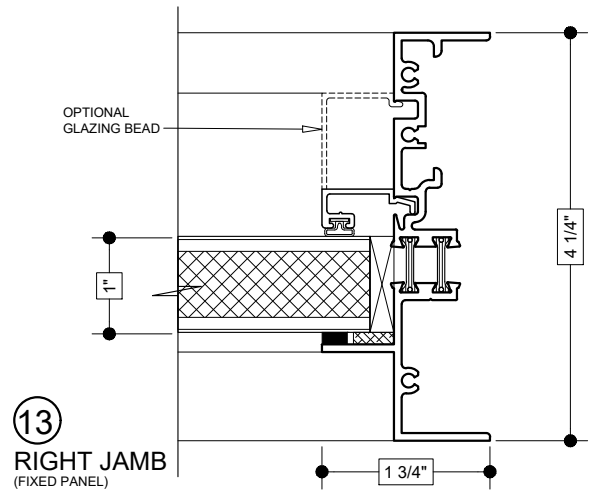
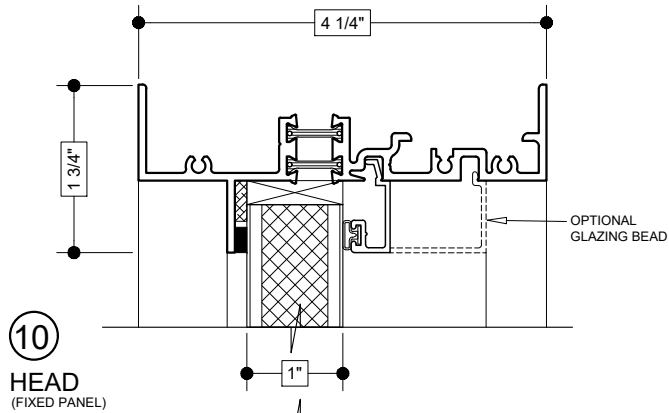
8A
SELF-STACK IMPOST
(FIXED TO FIXED)



9
3-PIECE MULLION
(FIXED TO FIXED - BEVEL FRAMES)

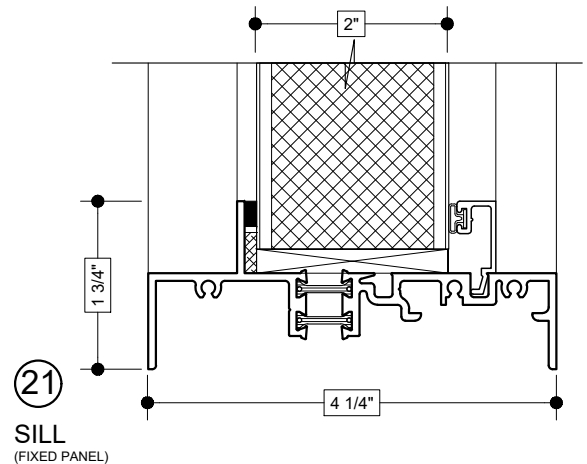
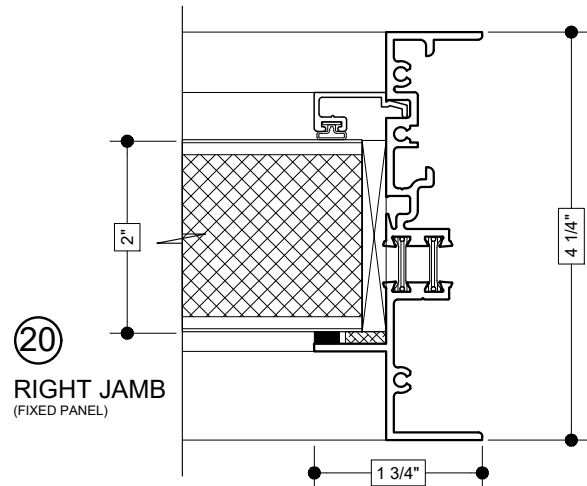
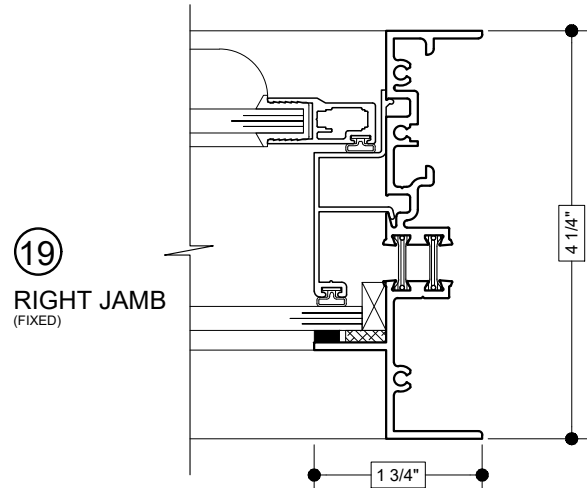
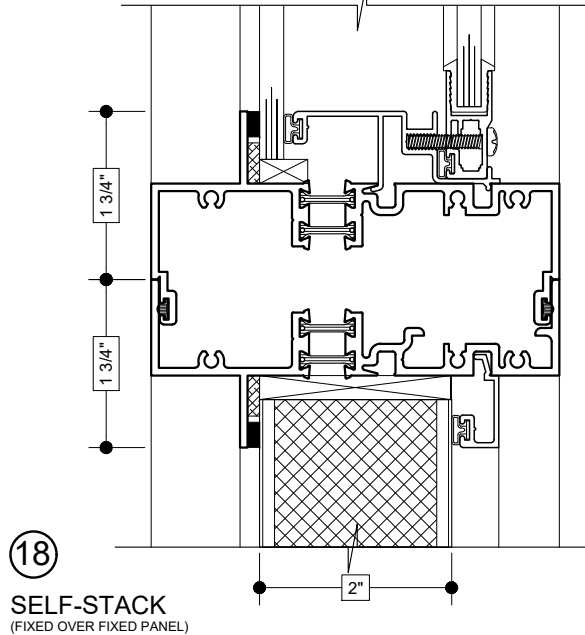
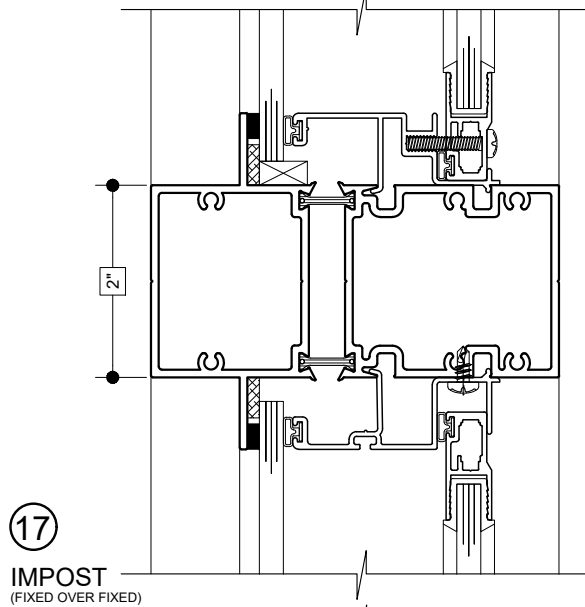
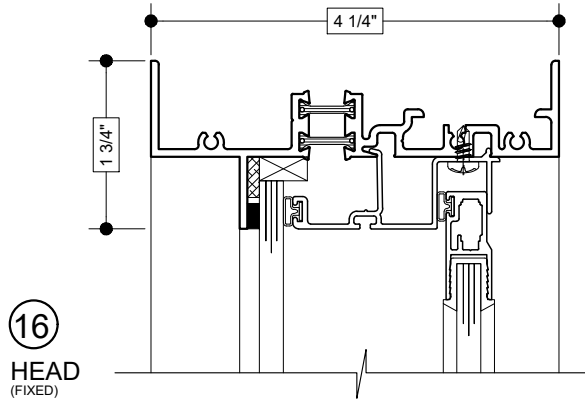
Details shown reflect the most commonly used configurations.
Contact AWM for additional details and/or assistance.

03/01/19



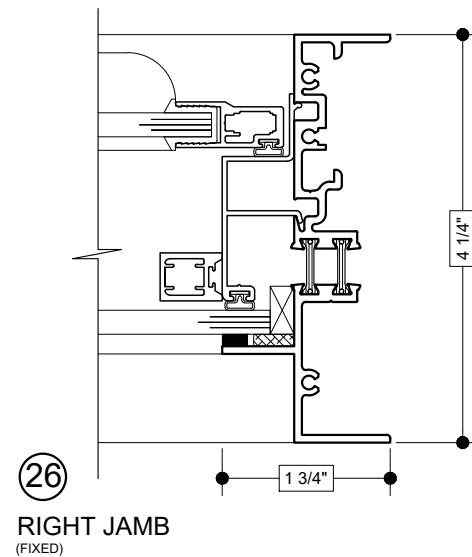
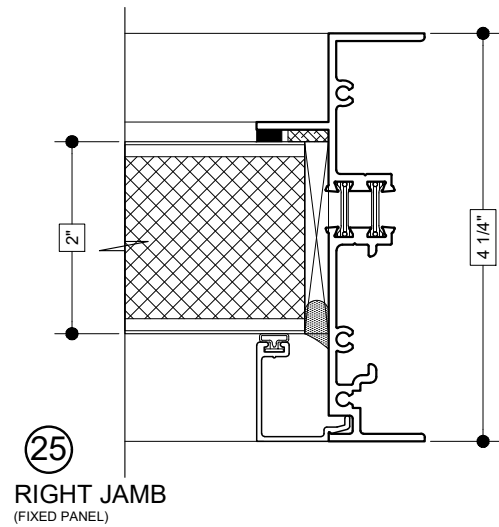
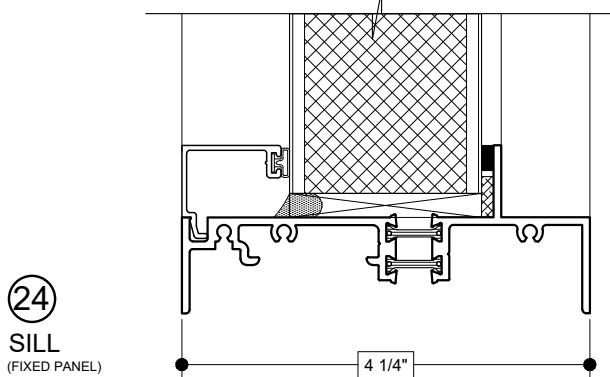
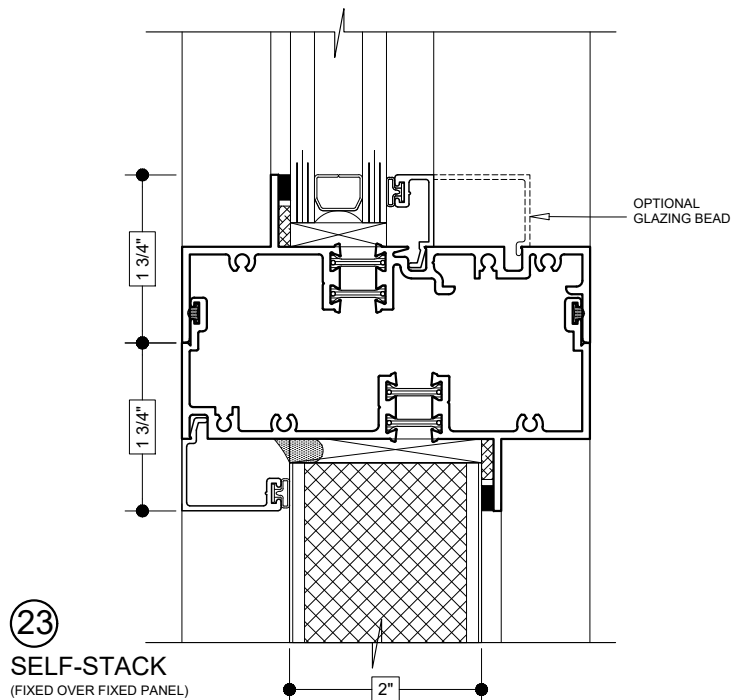
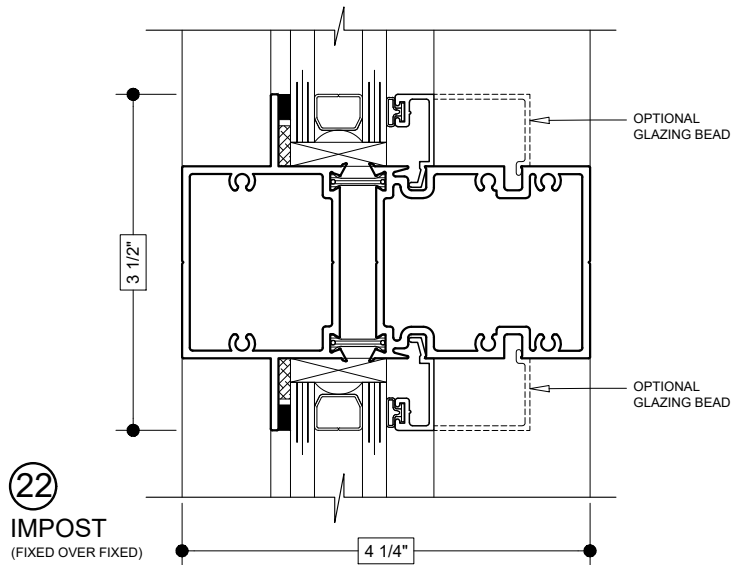
Details shown reflect the most commonly used configurations.
Contact AWM for additional details and/or assistance.

03/01/19



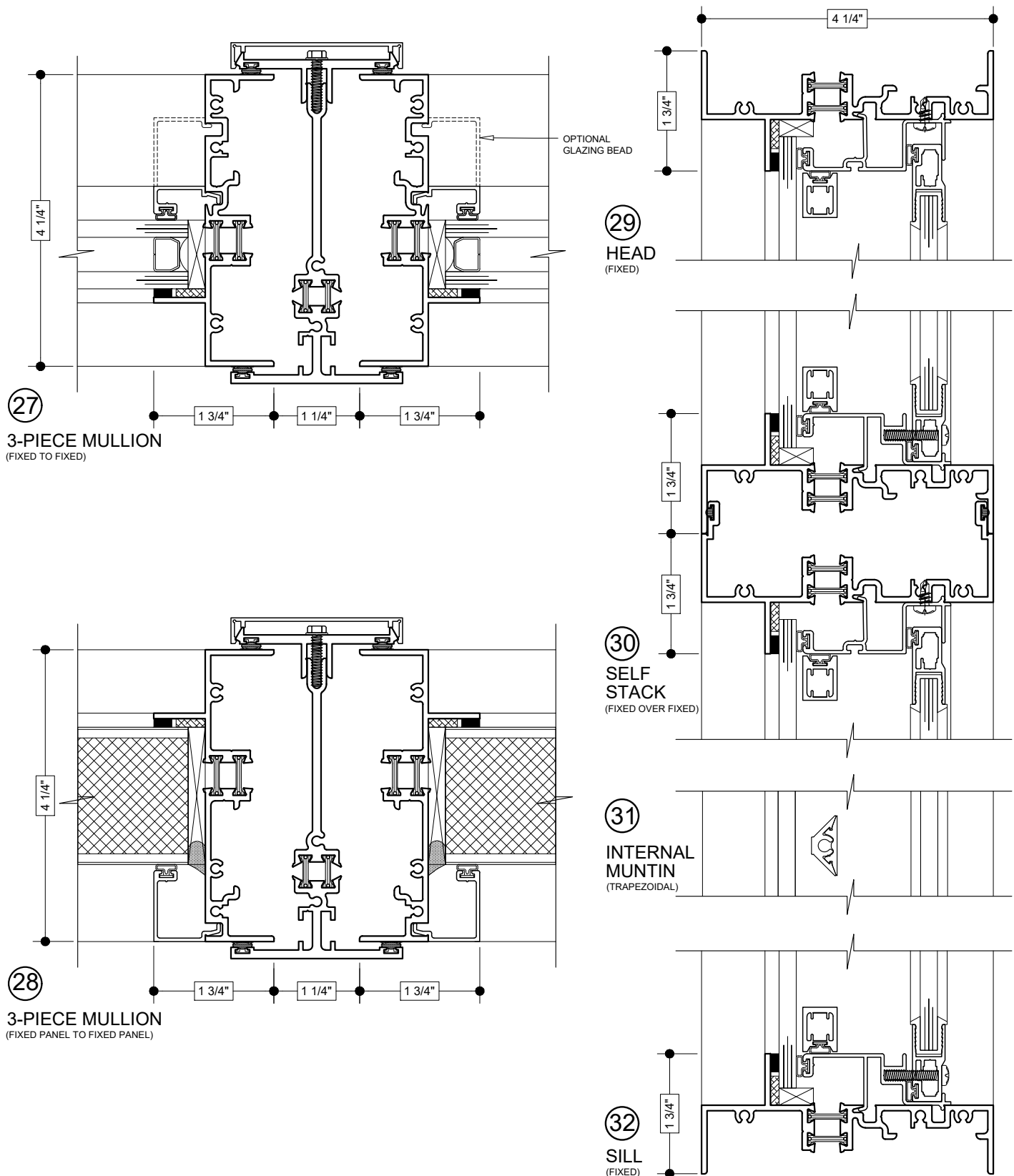
Details shown reflect the most commonly used configurations.
Contact AWM for additional details and/or assistance.

03/01/19



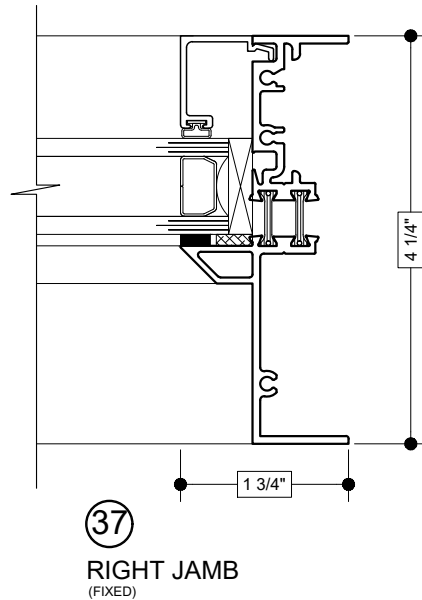
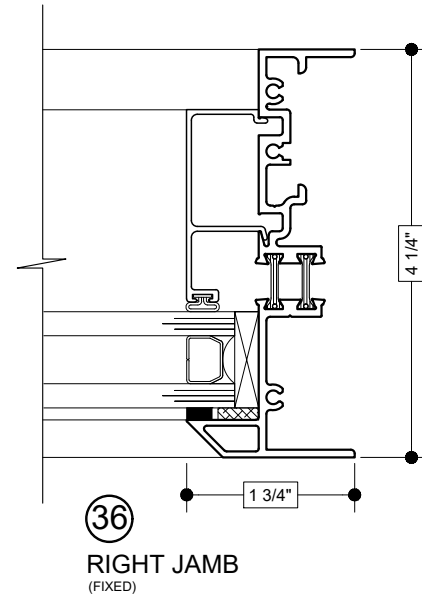
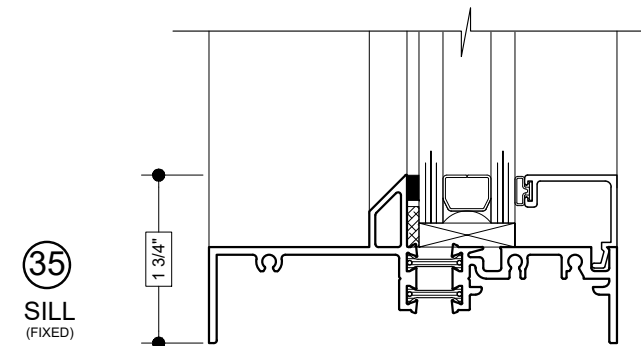
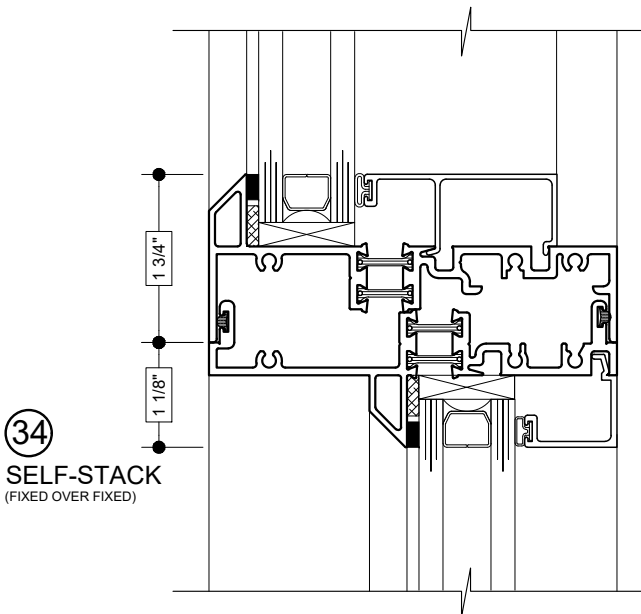
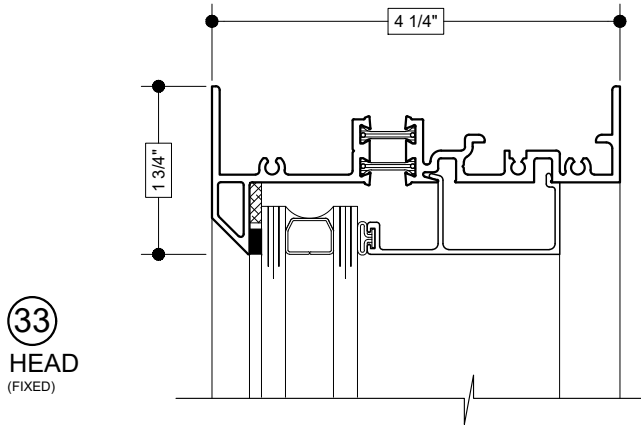
Details shown reflect the most commonly used configurations.
Contact AWM for additional details and/or assistance.

03/01/19

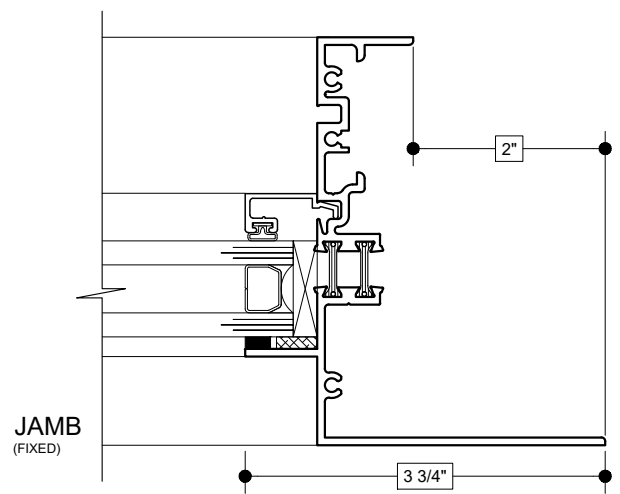
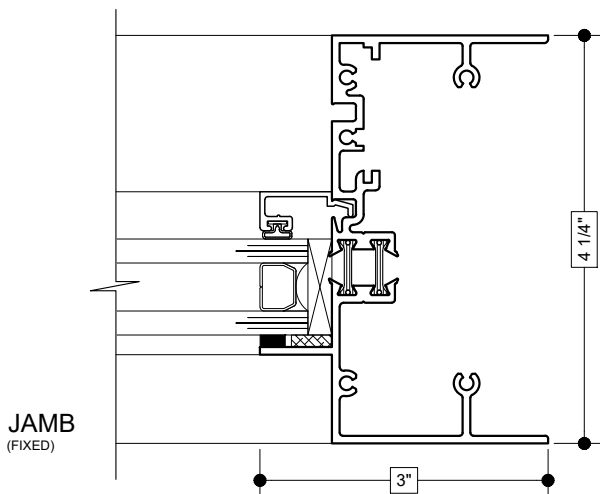
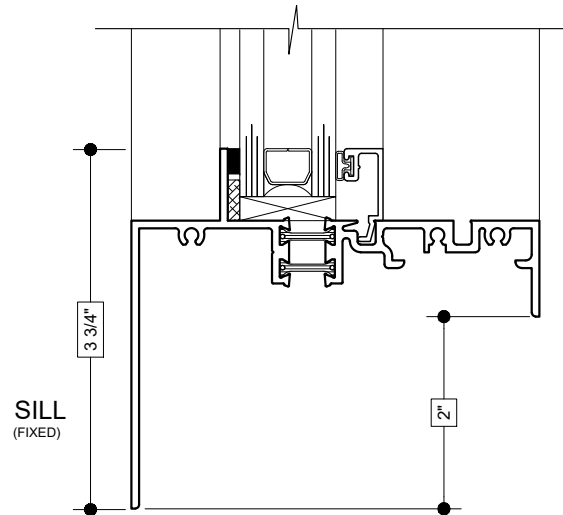
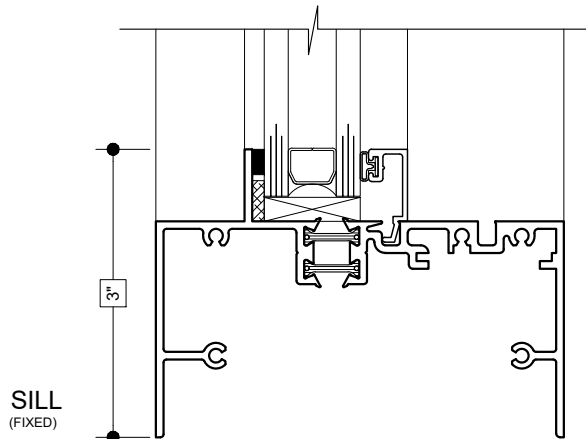
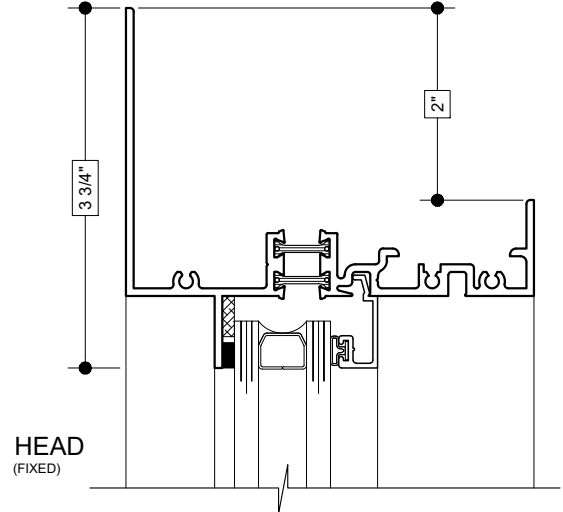
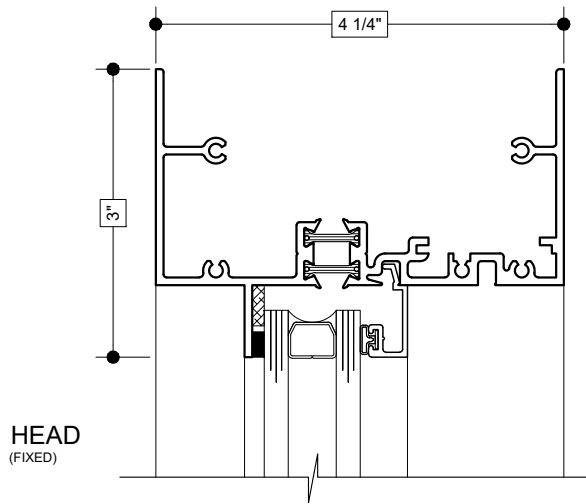


Details shown reflect the most commonly used configurations.
Contact AWM for additional details and/or assistance.

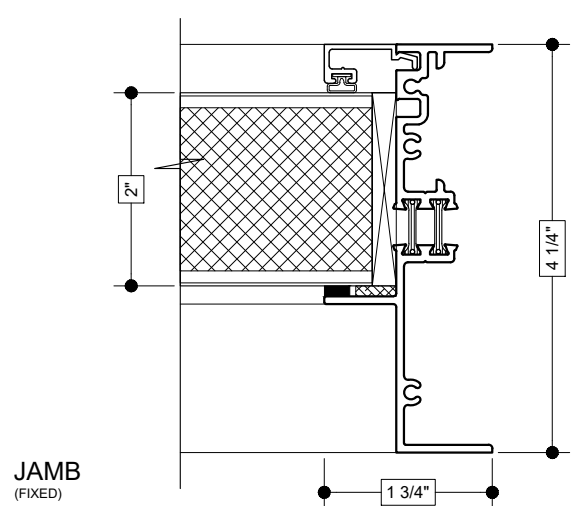
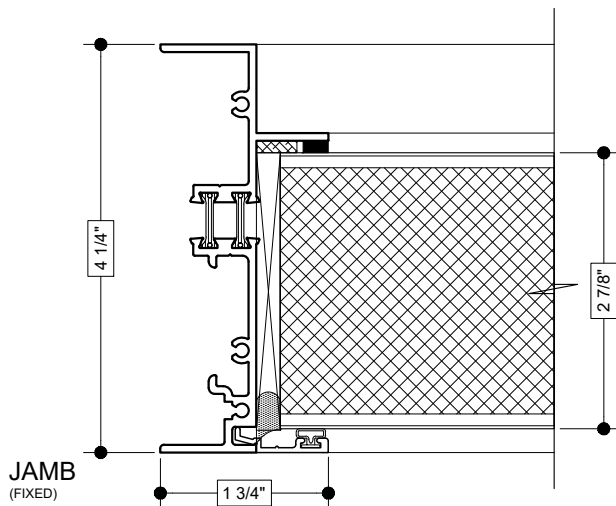
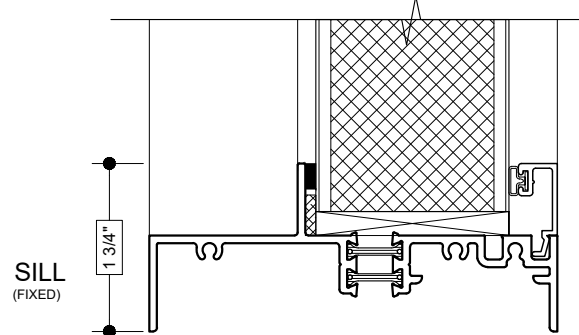
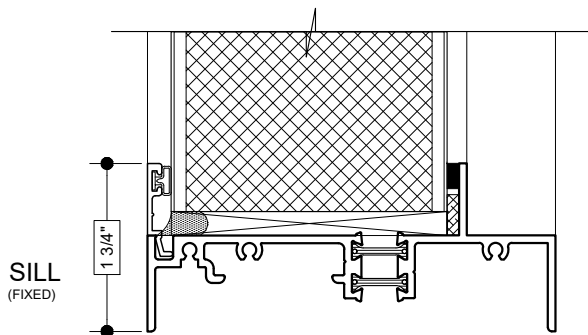
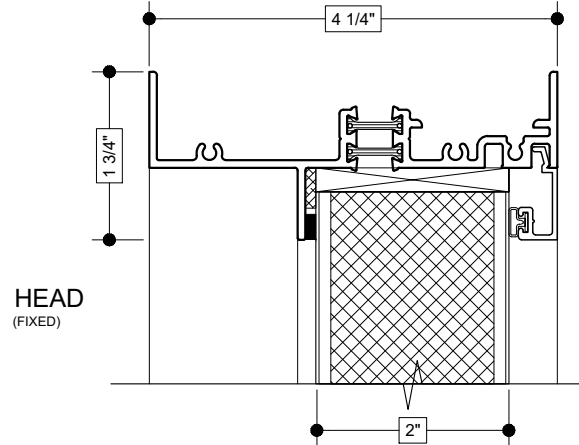
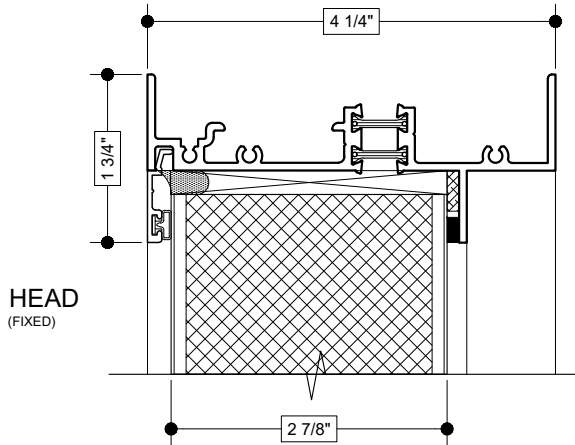
03/01/19



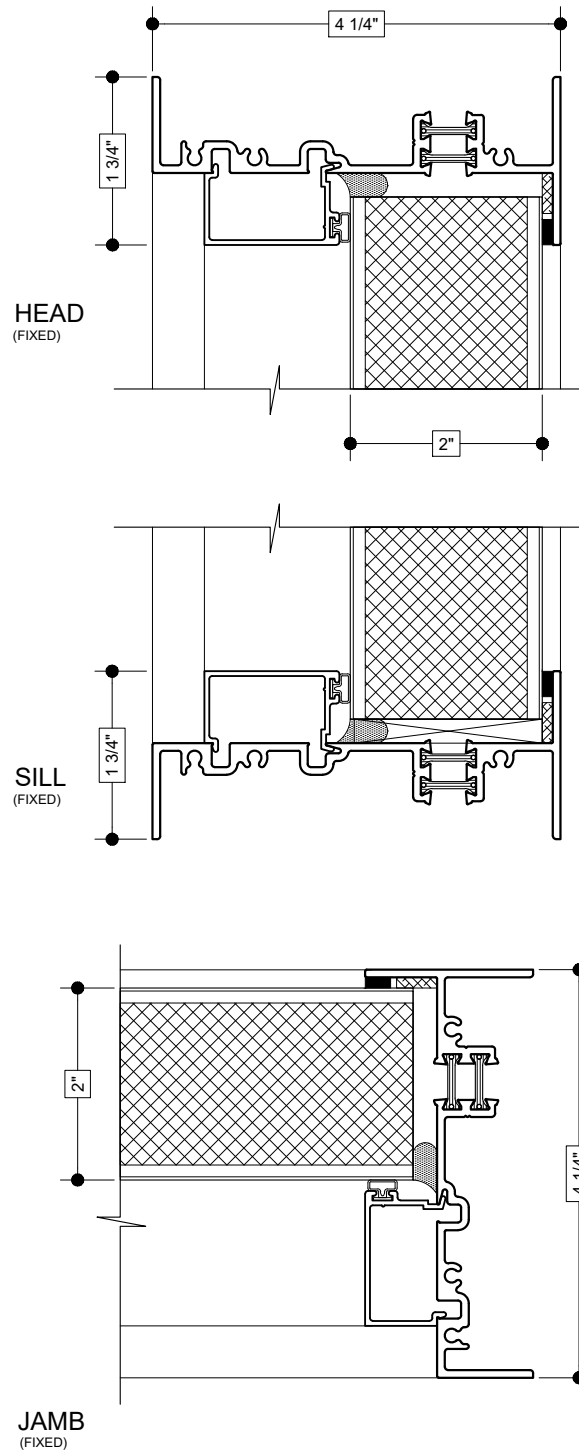
OPTIONAL EXTENDED FRAMES
OPTIONAL FLANGE FRAMES



OPTIONAL EXTERIOR GLAZED FRAMES
OPTIONAL INTERIOR GLAZED FRAMES



OPTIONAL EXTERIOR GLAZED FRAMES



OPTIONAL HEAVY DUTY FRAMES

