

PRODUCT DATA SHEET

Series 2500i
Casement
2 1/4" & 4 1/4" Frame Depths

PERFORMANCE DATA ¹	OPERATION	AAMA RATING	TEST SIZE (inches)	AIR (cfm/ft ²) @ 6.24 psf	WATER (psf)	DESIGN PRESSURE (psf)	STRUCTURAL OVERLOAD (psf)	OITC	U-FACTOR (BTU/HR/FT ² /F)
	Outswing	AW-PG150	36 x 60	<0.01	25	150	225	Consult AWM	See Below
	Inswing	AW-PG140	36 x 60	0.03	25	140	210	Consult AWM	See Below

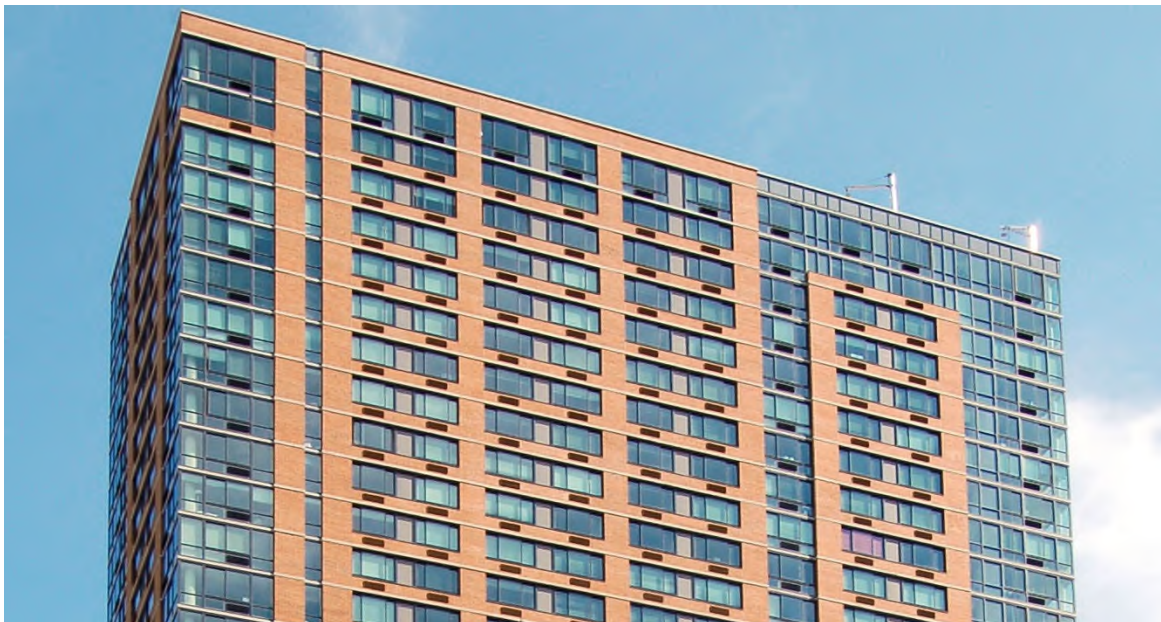
¹Based on independent certified laboratory testing per AAMA/WDMA/CSA/101/1.S.2/A440. Field results will vary based on size, test methods, accessories & conditions

STANDARD FEATURES

- Thermal strut thermal barrier for enhanced performance and dual finish capability
- Flush vent design provides clean look and protects weather-stripping
- .125" walls with tubular meeting rails and vents for superior structural performance
- Wet glazed with structural silicone for maximum seal strength and water resistance
- Aluminum butt hinges for increased vent weight capacity and white bronze cam locks
- Vents are precision miter cut, reinforced with gusset blocks and mechanically crimped
- Accommodates up to 1 3/4" glazing infill
- AAMA 2603/2604/2605 painted or AAMA 611 anodized finishes

OPTIONAL FEATURES

- Dual glazing with removable access panels (Allows for vandal resistant polycarbonate glazing or integral blinds (5/8" or 1" deep))
- Between the lites of dual glazing muntin grids
- Insect screens (fiberglass, aluminum or stainless steel mesh)
- Hurricane Windborne Debris Impact Resistance (Large Missile)
- Roto-operators (outswing only)
- Multi-point locks, custodial hardware, concealed 4-bar stainless steel hinges
- Limit devices (NYCDOH stamped where applicable)



THERMAL PERFORMANCE CHART ¹	WINDOW SIZE	CENTER OF INSULATED GLASS U-FACTOR/SPACER TYPE ("Alum."=Aluminum, "Warm"=Warm Edge) ²							
		0.33/Alum.	0.33/Warm	0.29/Alum.	0.29/Warm	0.24/Alum.	0.24/Warm	0.20/Alum.	0.20/Warm
	24" x 59"*	0.544	0.520	0.525	0.499	0.501	0.474	0.467	0.445
36" x 60"	0.493	0.474	0.469	0.449	0.441	0.420	0.402	0.385	

¹Based on independent certified simulations of 2 1/4" deep outswing version in accordance with NFRC 100 *Designates NFRC Gateway size ²Consult AWM for additional configurations

1/7/19