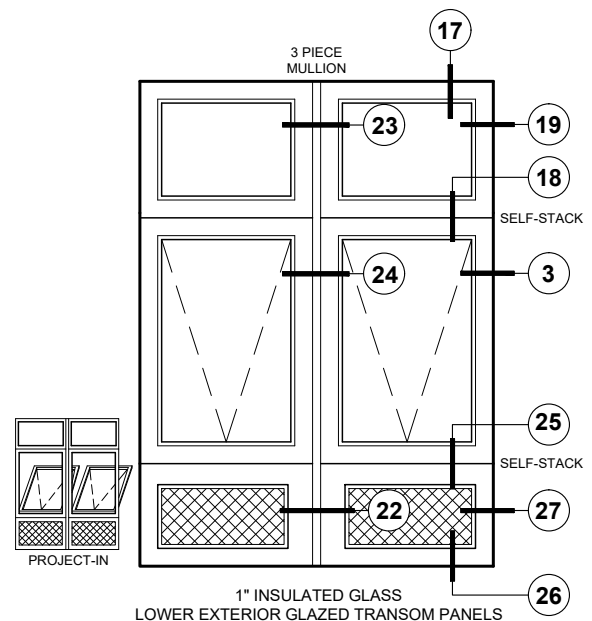
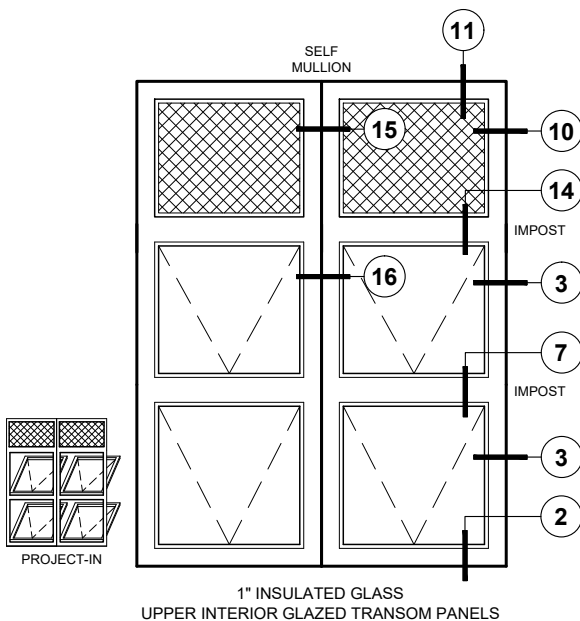
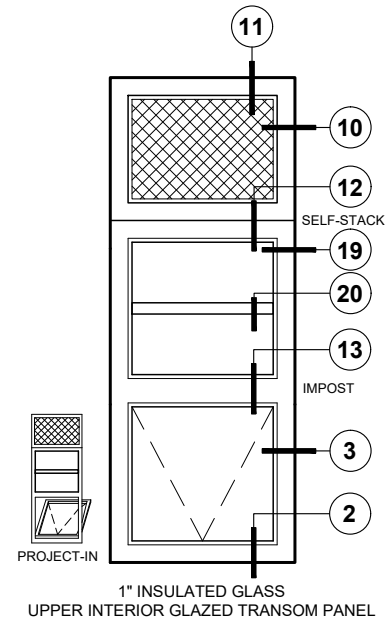
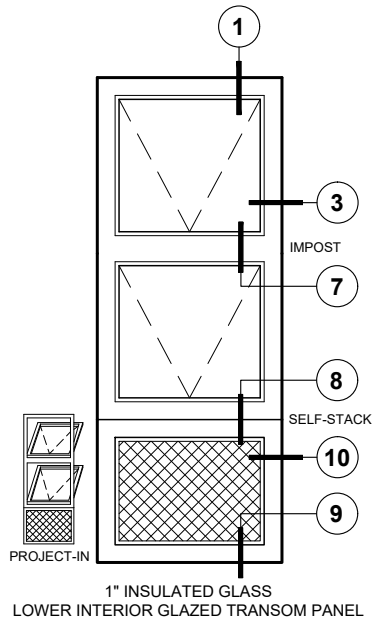
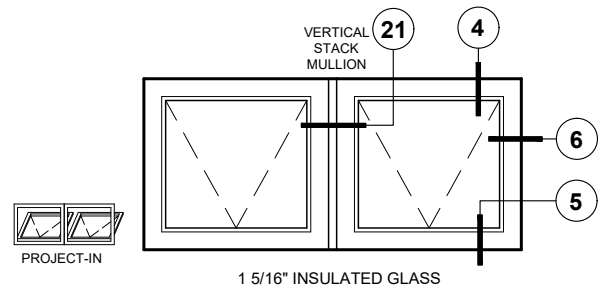
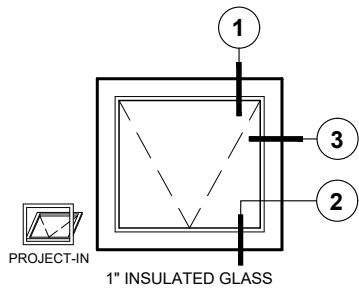


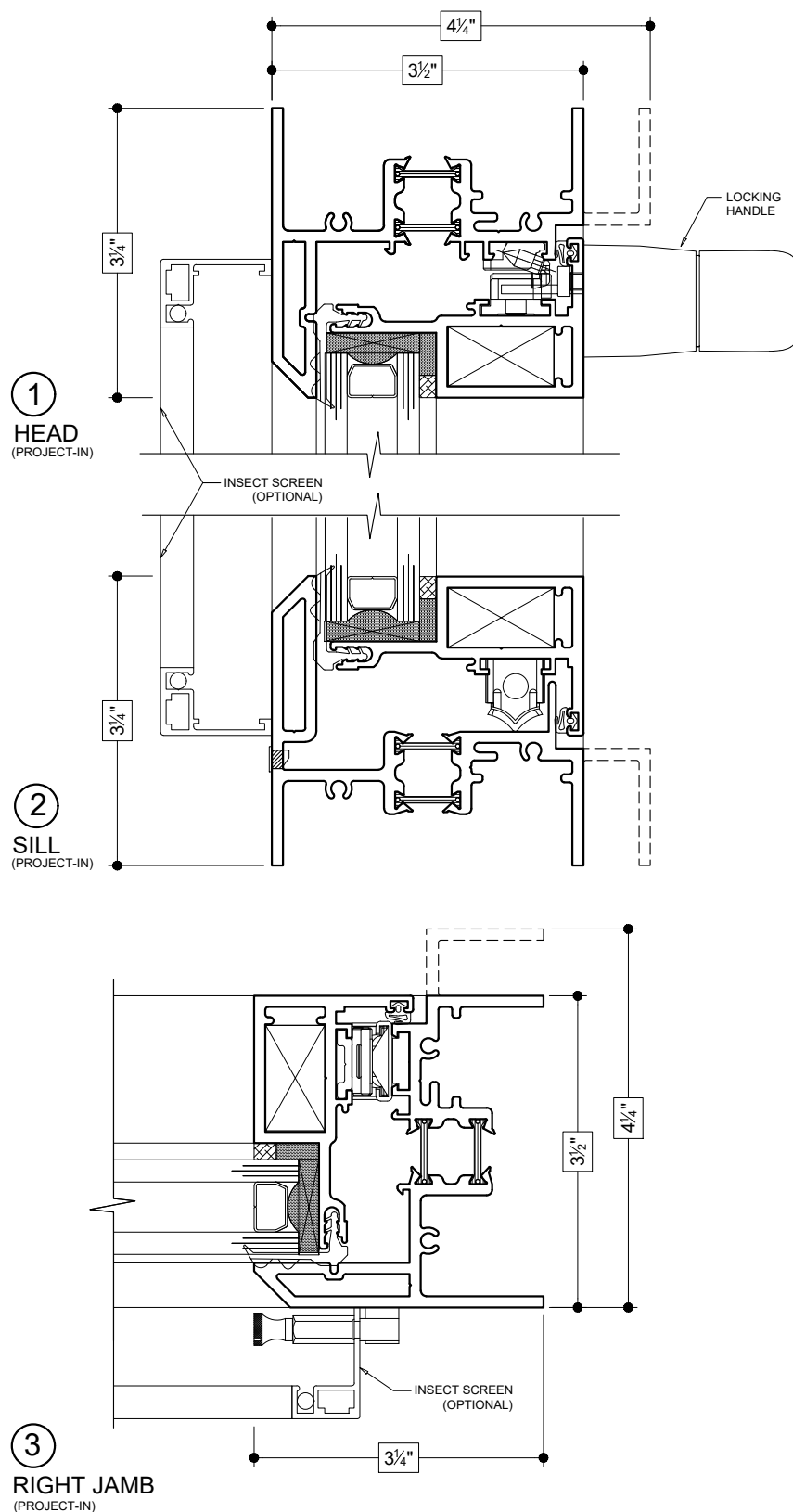
Details shown reflect the most commonly used configurations.  
Contact AWM for additional details and/or assistance.

05/29/19



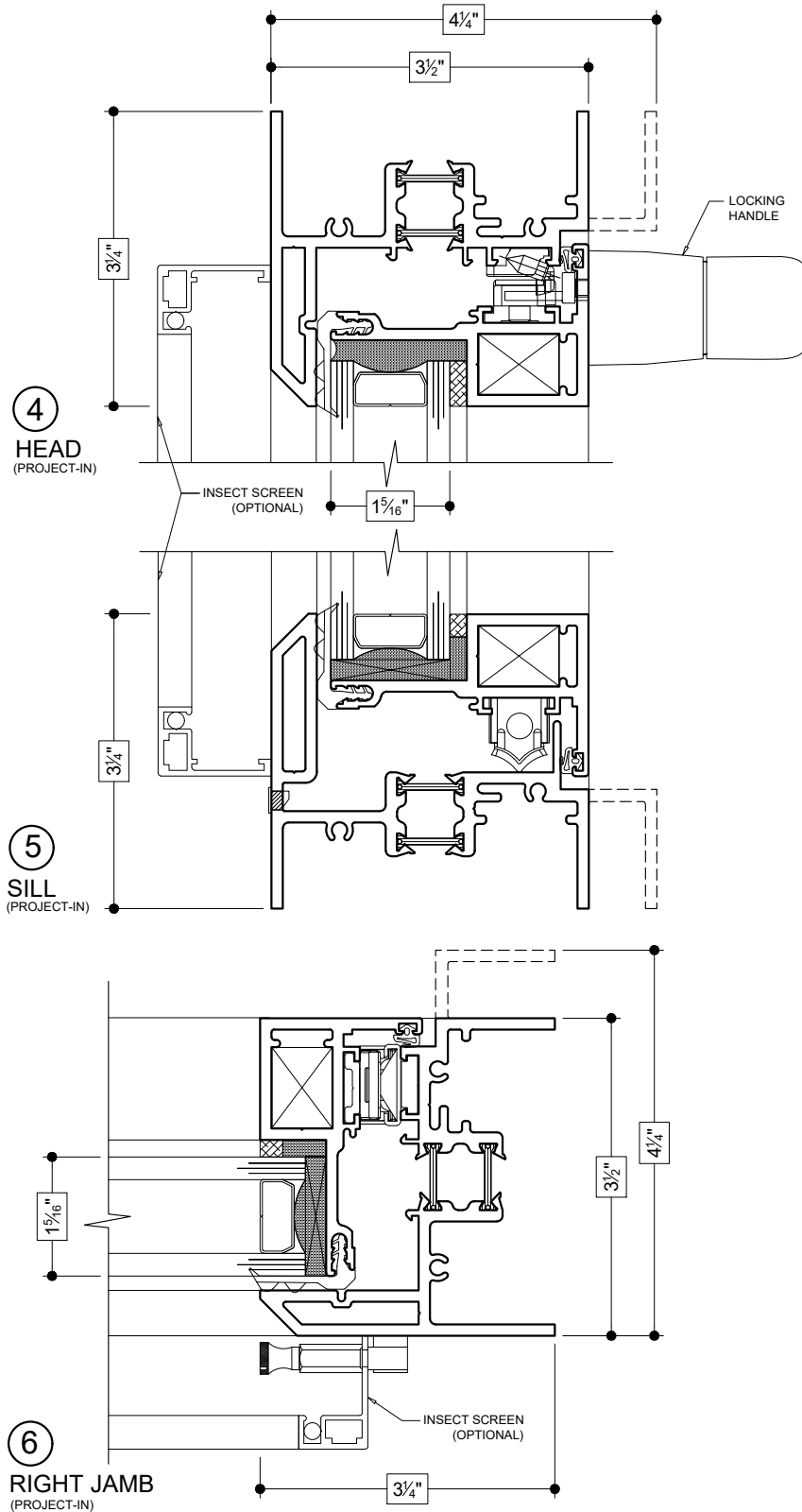
Details shown reflect the most commonly used configurations.  
Contact AWM for additional details and/or assistance.

05/29/19



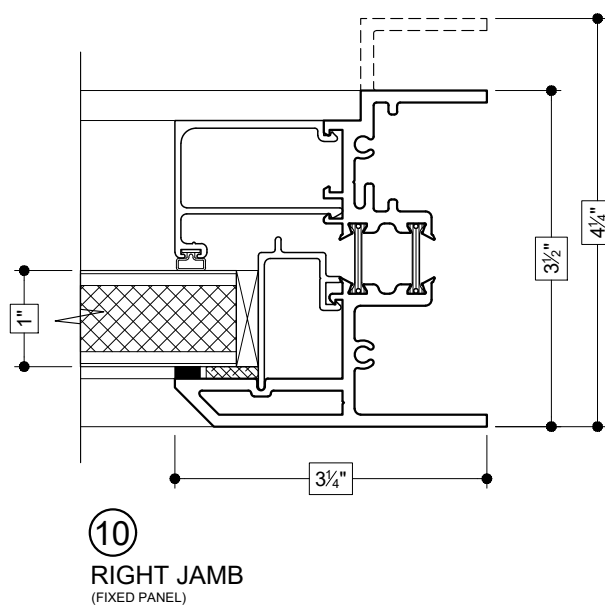
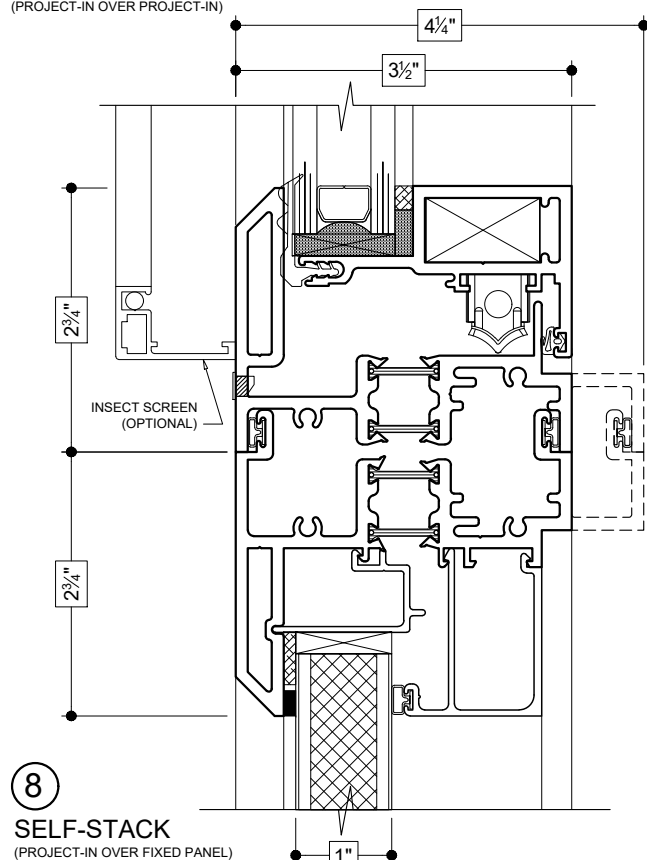
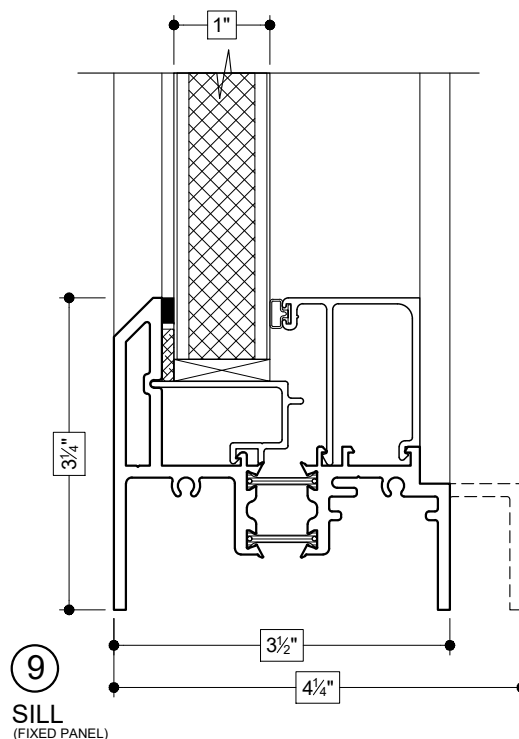
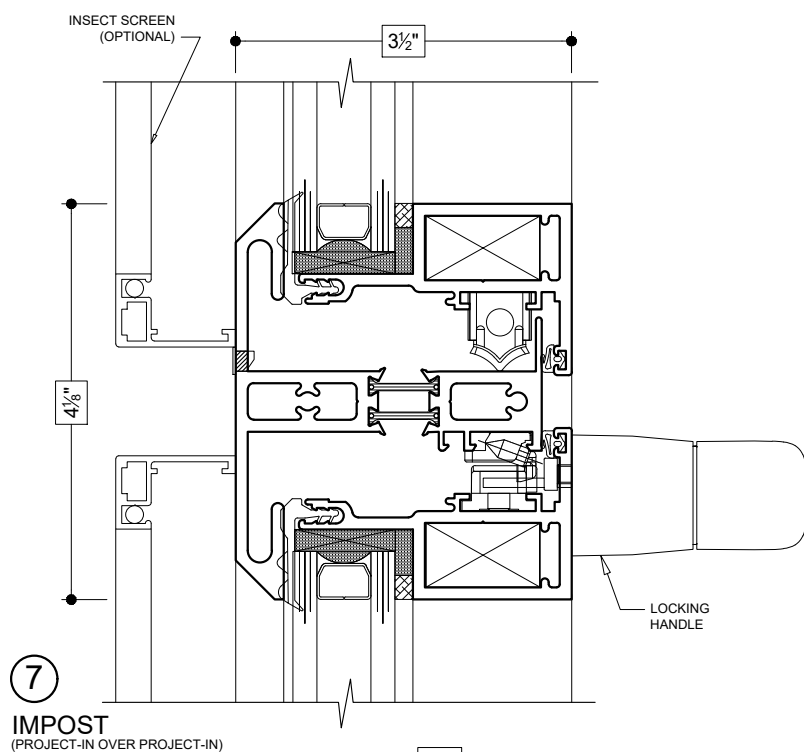
Details shown reflect the most commonly used configurations.  
Contact AWM for additional details and/or assistance.

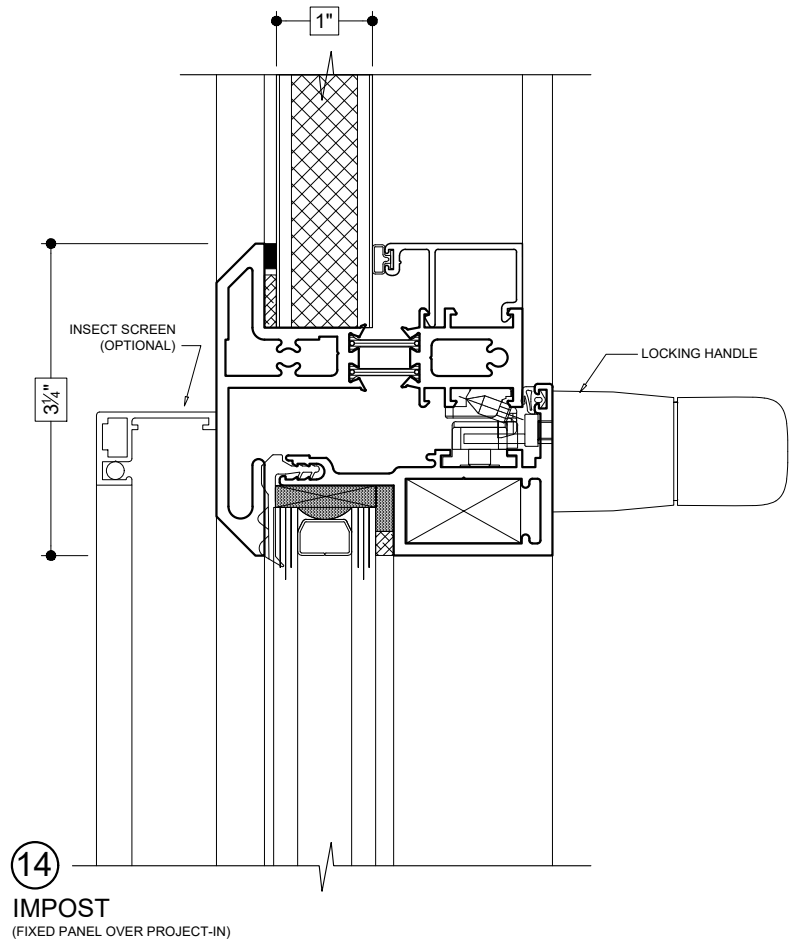
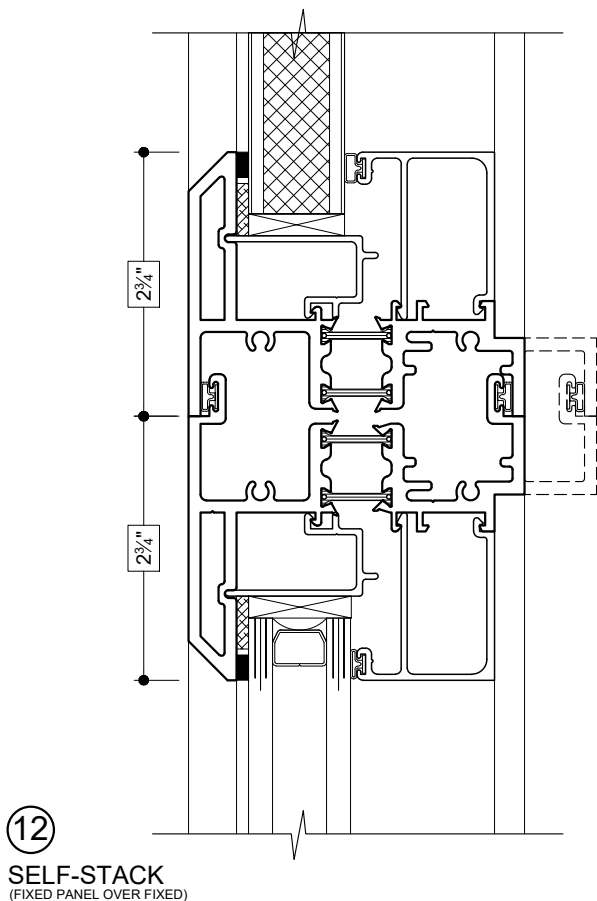
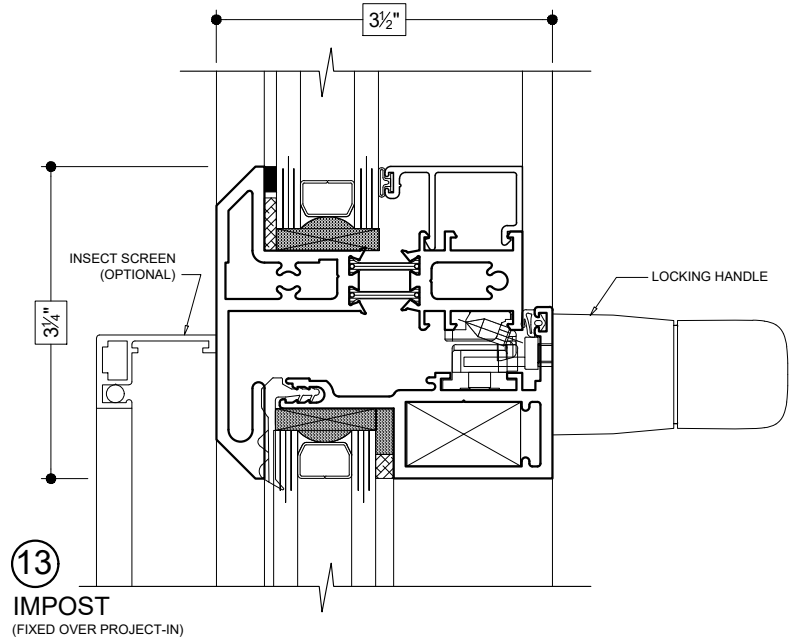
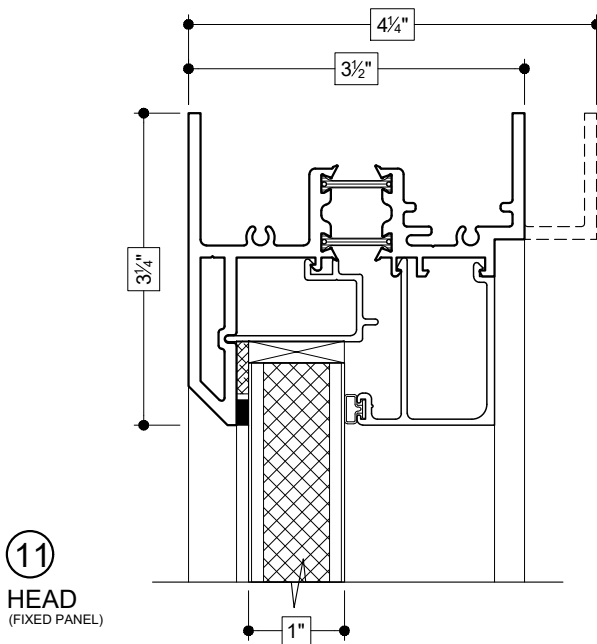
05/29/19

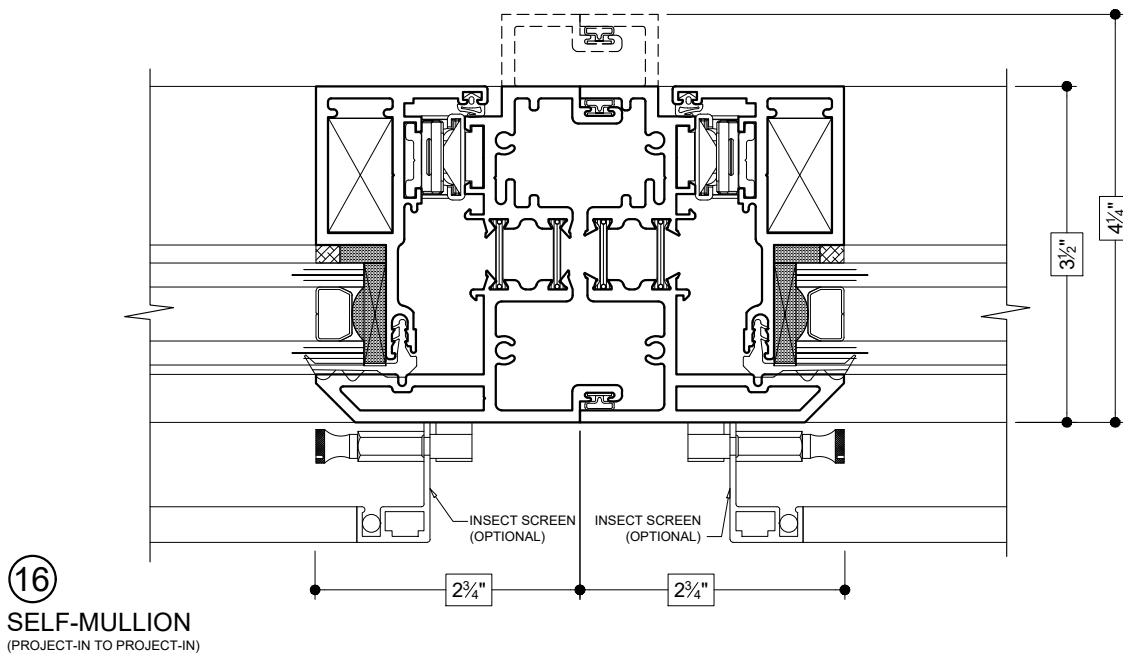
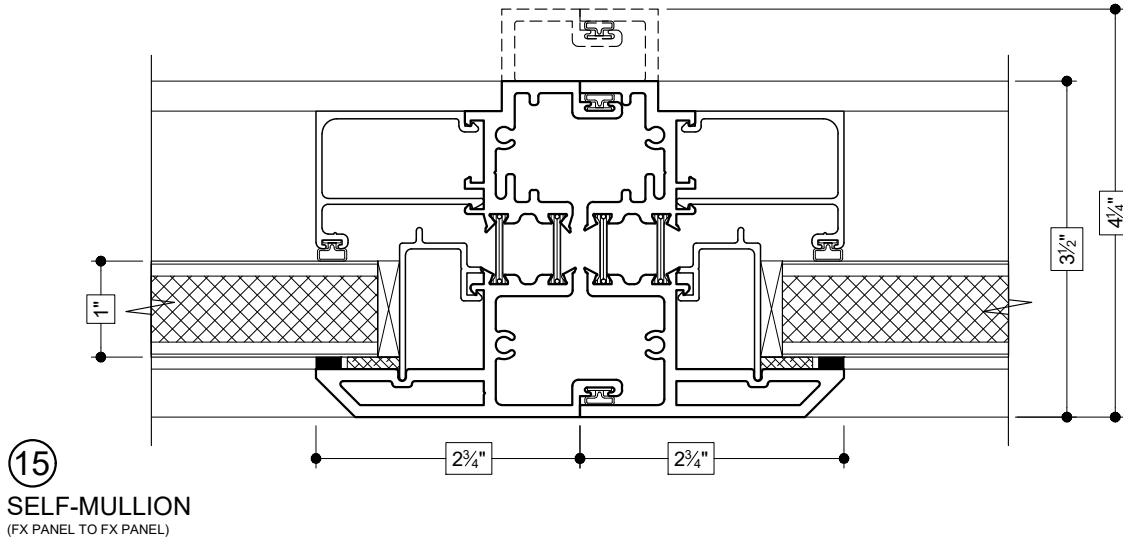


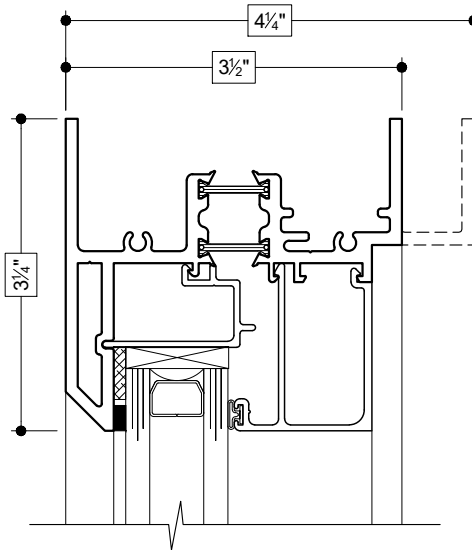
Details shown reflect the most commonly used configurations.  
Contact AWM for additional details and/or assistance.

05/29/19

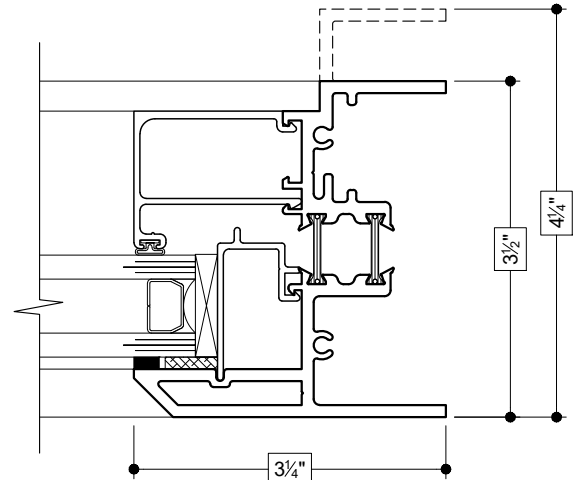




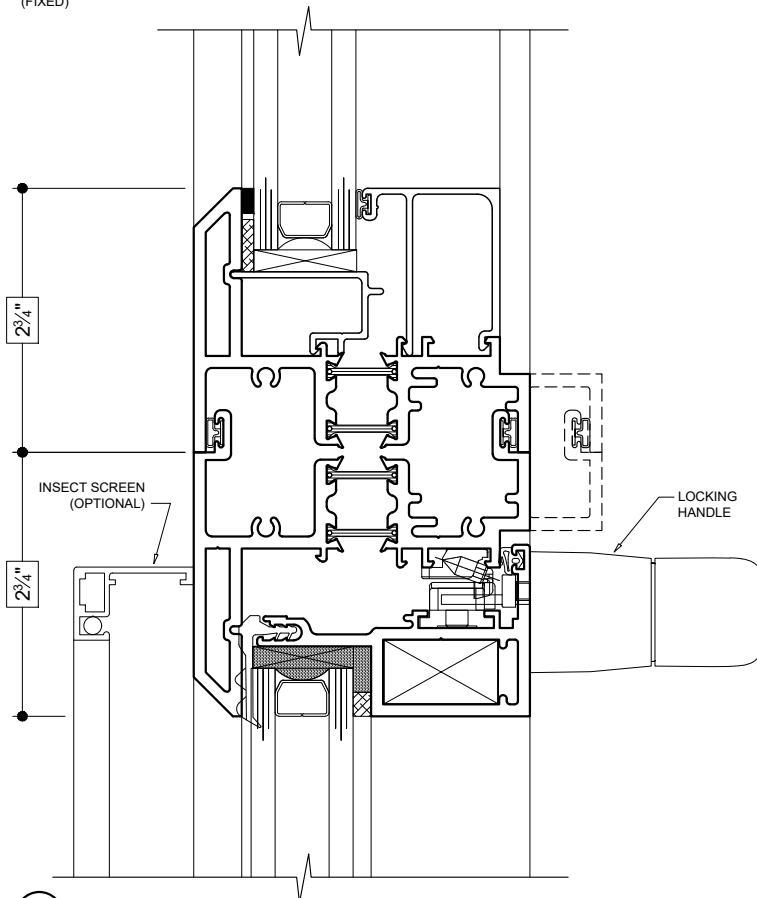




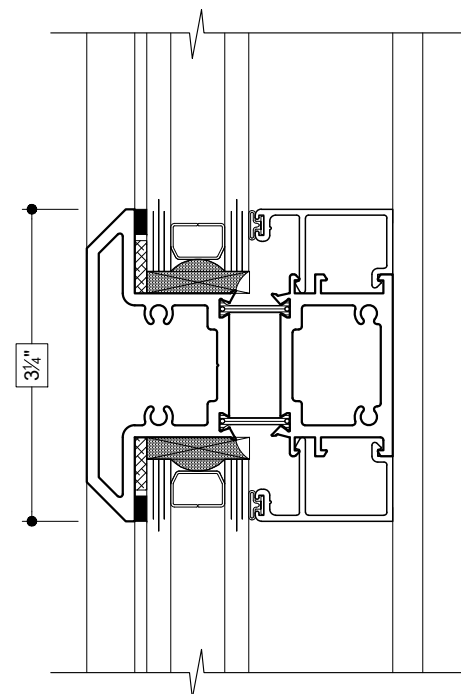
**17**  
**HEAD**  
(FIXED)



**19**  
**RIGHT JAMB**  
(FIXED)



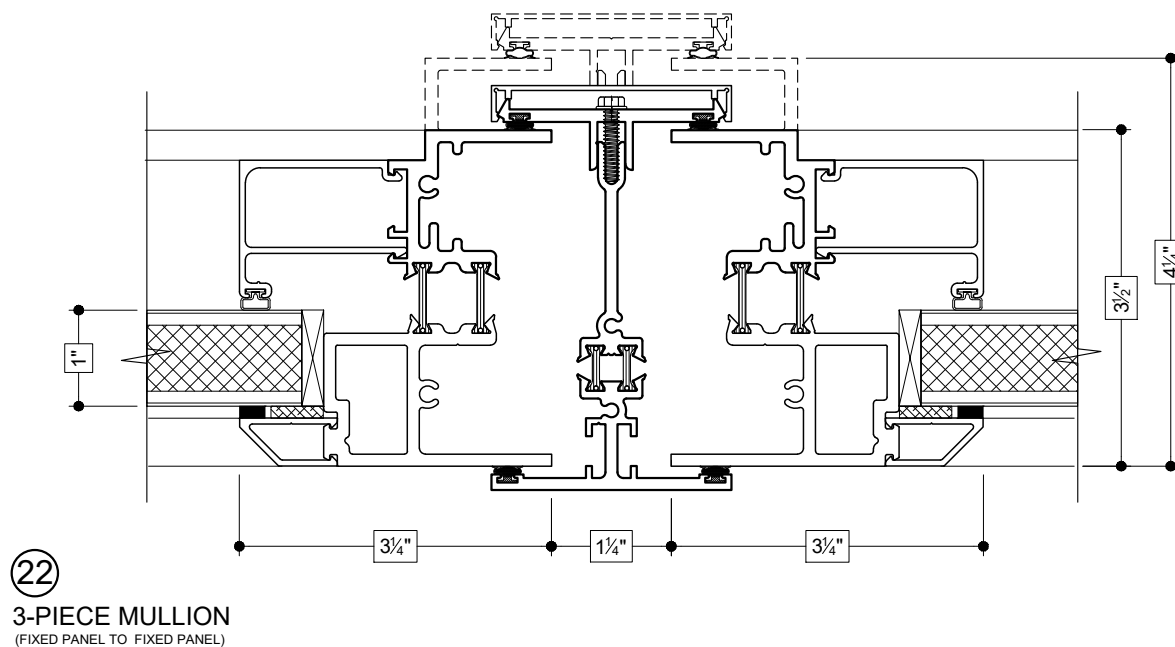
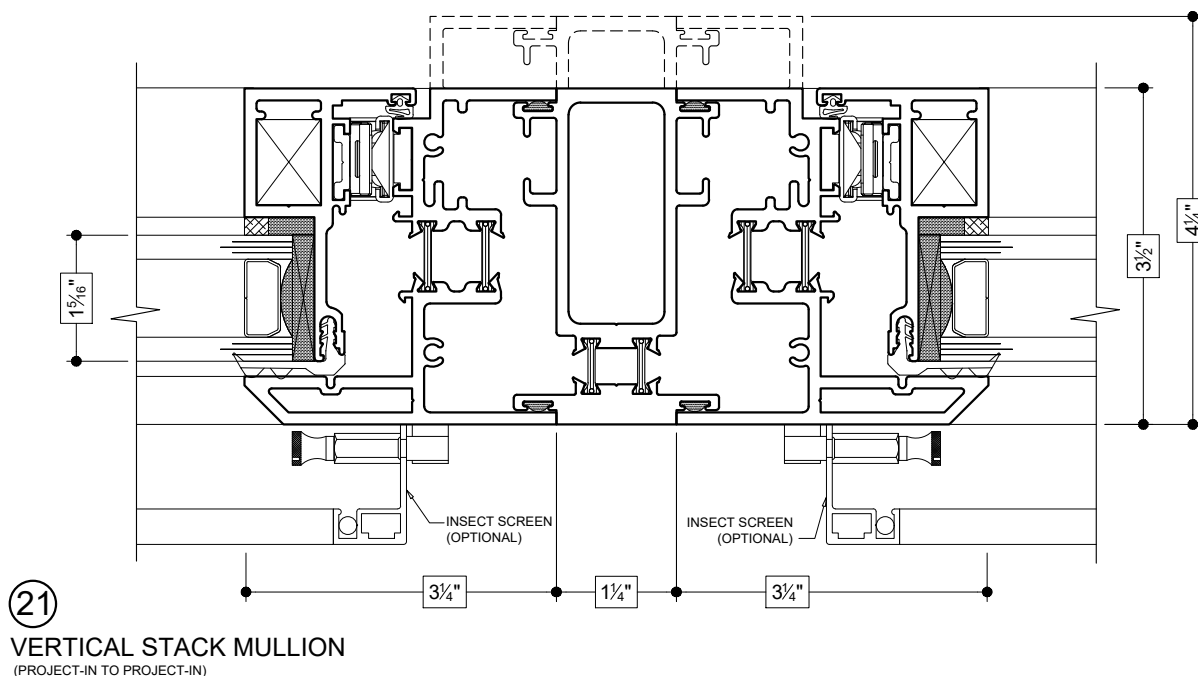
**18**  
**SELF-STACK**  
(FIXED OVER PROJECT-IN)



**20**  
**TRUE MUNTIN**

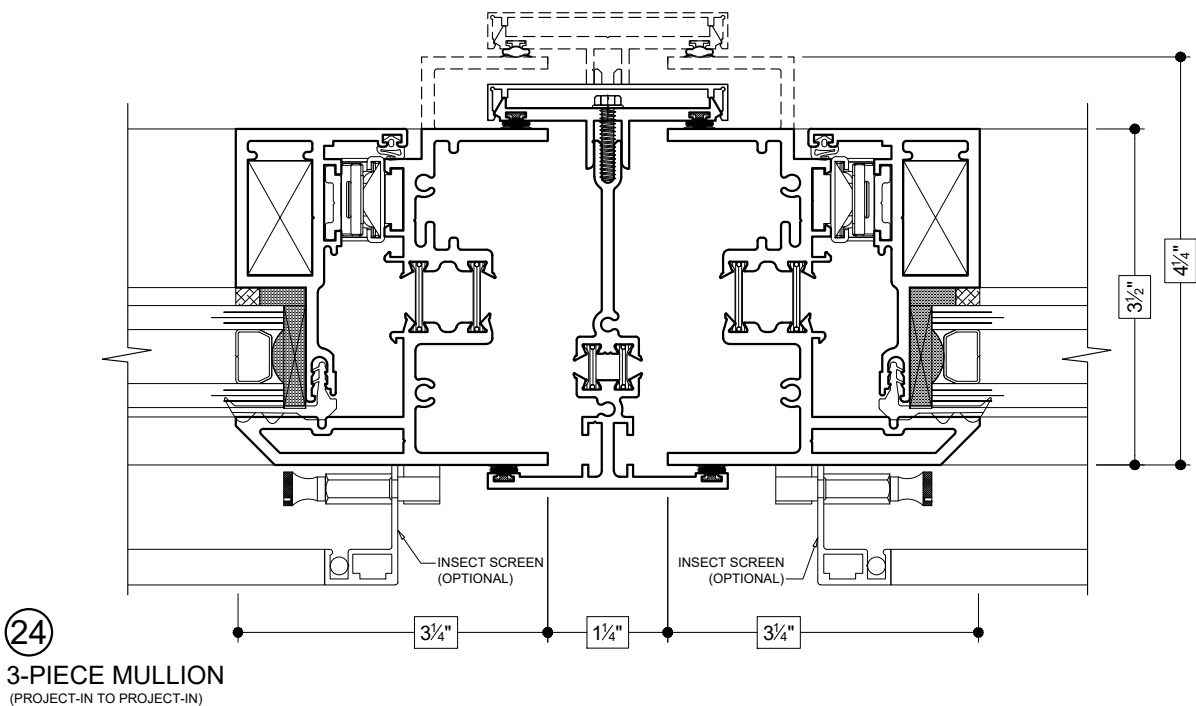
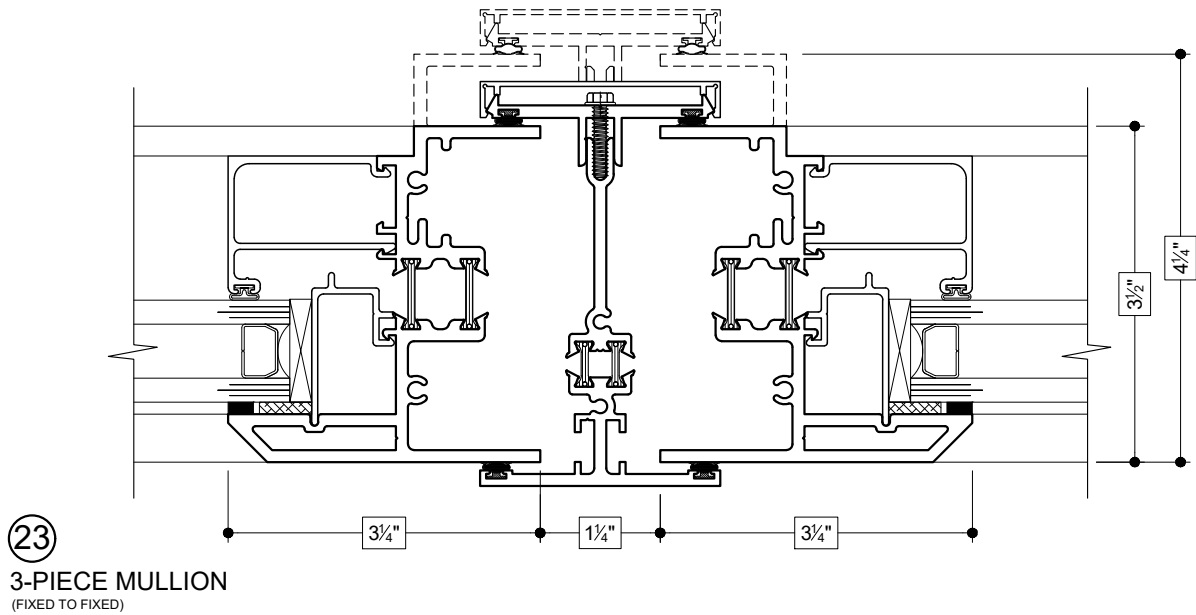
Details shown reflect the most commonly used configurations.  
Contact AWM for additional details and/or assistance.

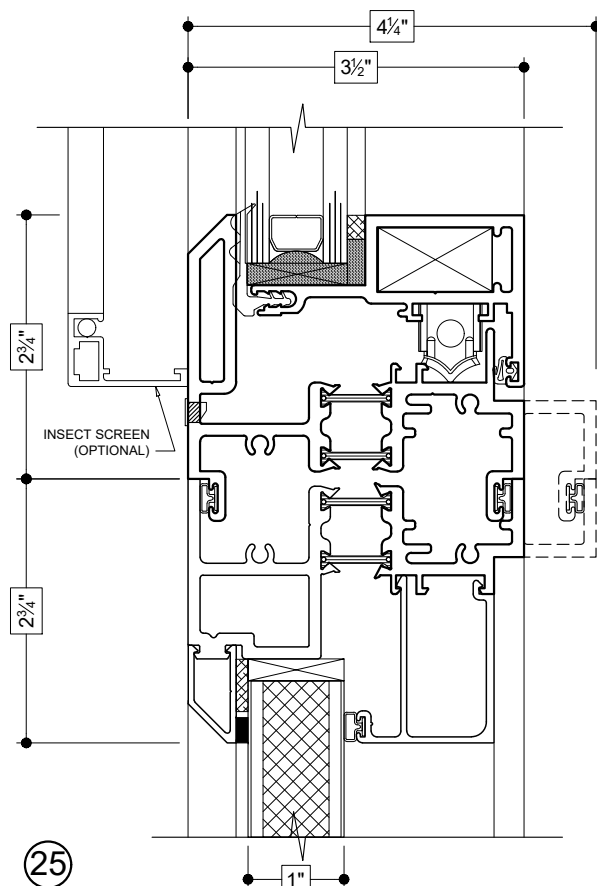
05/29/19



Details shown reflect the most commonly used configurations.  
Contact AWM for additional details and/or assistance.

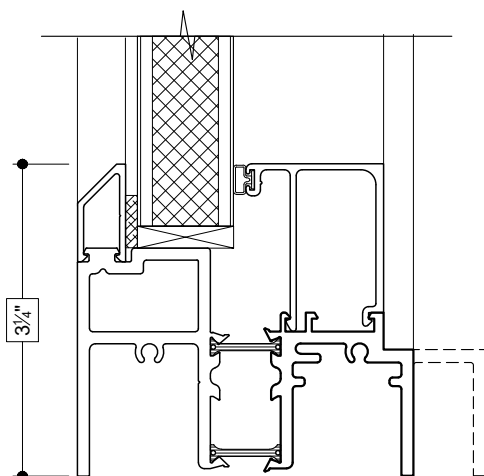
05/29/19





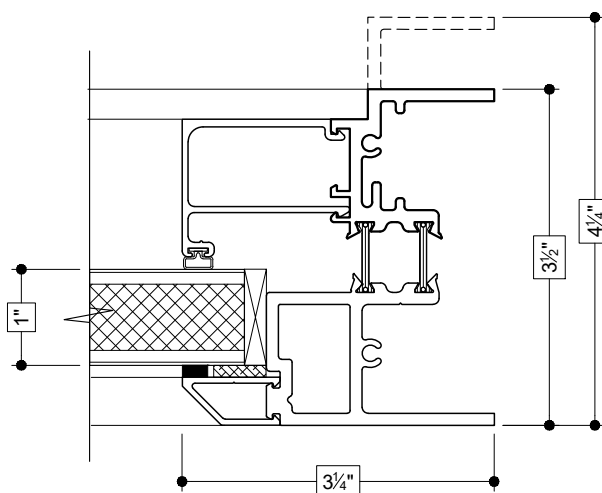
(25)

**SELF-STACK**  
(PROJECT-IN OVER FIXED PANEL)



(26)

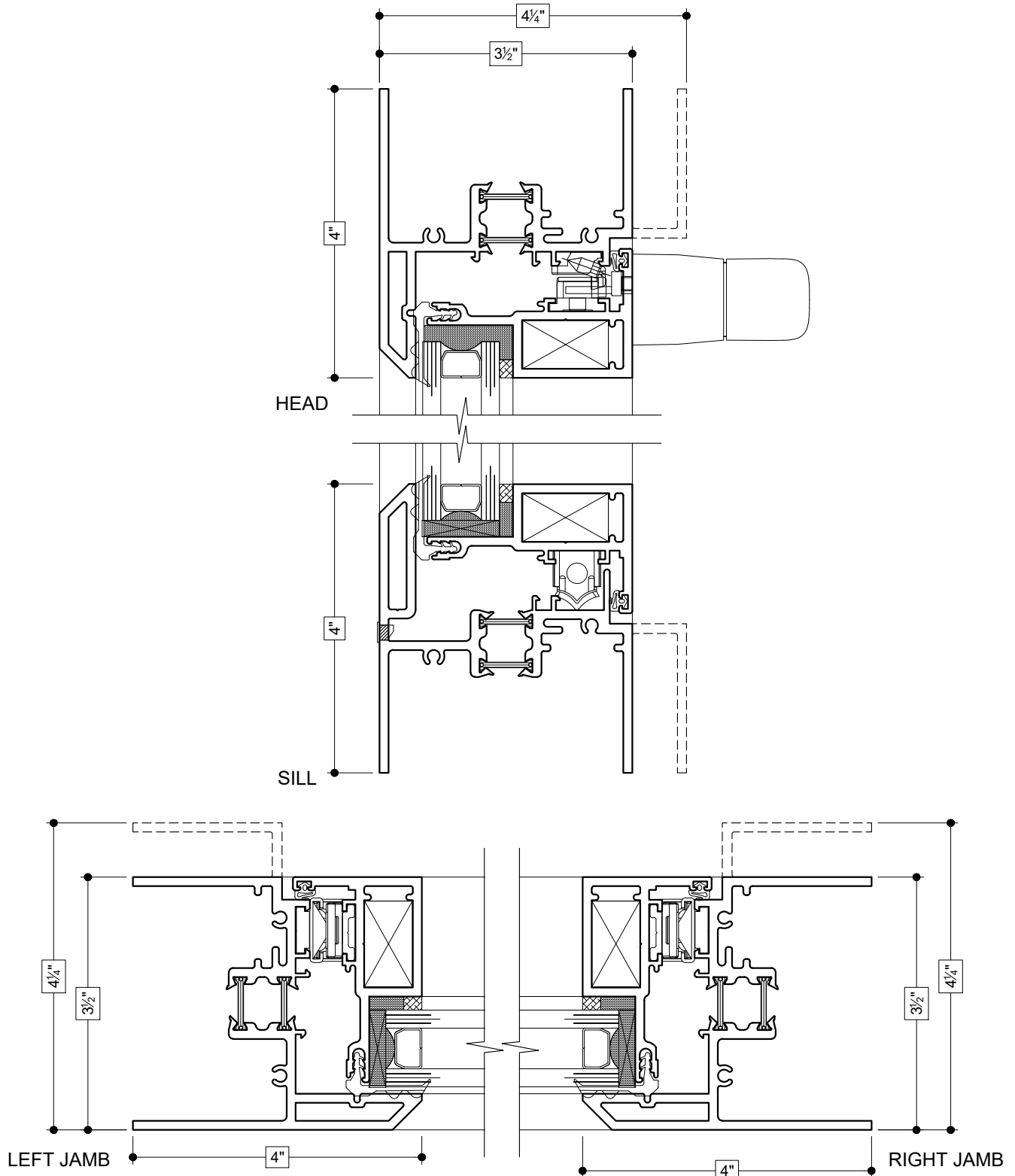
**SILL**  
(FIXED PANEL)



(27)

**RIGHT JAMB**  
(FIXED PANEL)

**OPTIONAL EXTENDED FRAMES**



Details shown reflect the most commonly used configurations.  
Contact AWM for additional details and/or assistance.

05/29/19

**OPTIONAL RETURN FRAMES**

