

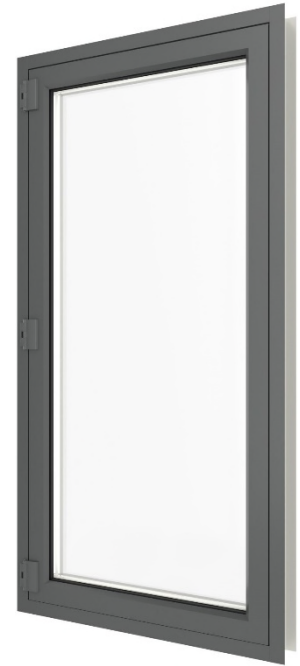
PRODUCT DATA SHEET

PERFORMANCE DATA ¹	OPERATION	AAMA RATING	TEST SIZE (inches)	AIR (cfm/ft ²) @ 6.24 psf	WATER (psf)	DESIGN PRESSURE (psf)	STRUCTURAL OVERLOAD (psf)	OITC	U-FACTOR (BTU/HR/FT ² /F)
	Outswing	AW-PG140	36 x 60	<0.01	25	140	210	Consult AWM	See Below
	Inswing	AW-PG95	36 x 60	<0.01	25	95	142.5	Consult AWM	See Below

¹Based on independent certified laboratory testing per AAMA/WDMA/CSA/101/1.S.2/A440. Field results will vary based on size, test methods, accessories & conditions

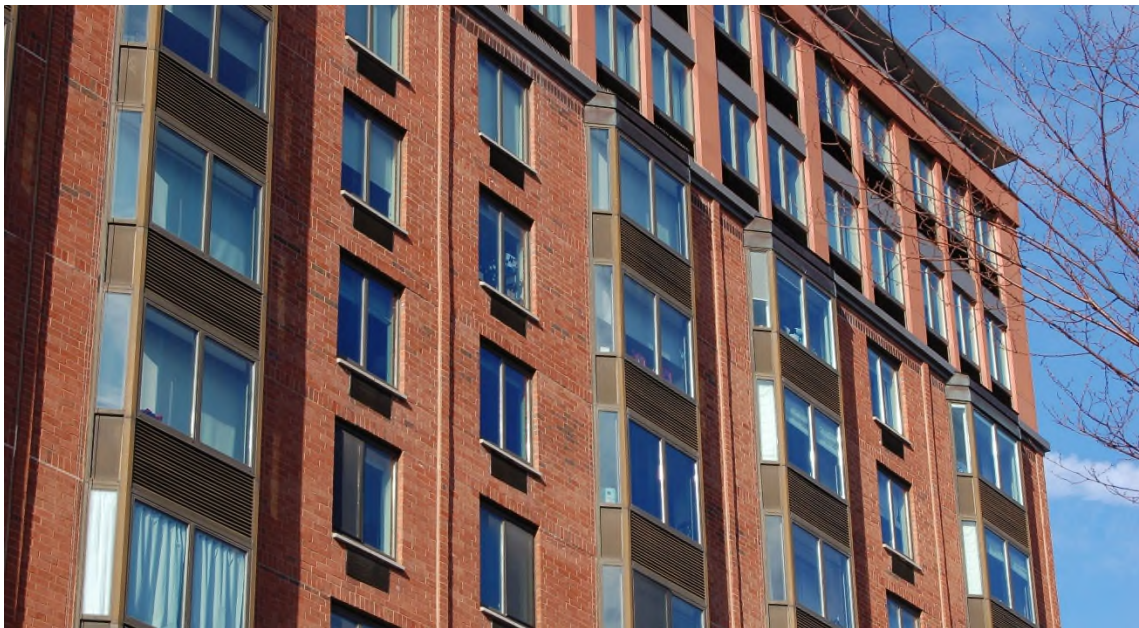
STANDARD FEATURES

- 35 mm thermal struts provide exceptional U-values and dual finish capability
- Flush vent design with integral bevel provides clean look and protects weather-stripping
- Wet glazed with structural silicone for maximum seal strength and water resistance
- Tubular meeting rails and vents for superior structural performance
- Aluminum butt hinges for increased vent weight capacity and white bronze cam locks
- Accommodates up to 2 5/8" glazing infill
- AAMA 2603/2604/2605 painted or AAMA 611 anodized finishes



OPTIONAL FEATURES

- Dual glazing with removable access panels (Allows for vandal resistant polycarbonate glazing or integral blinds (5/8" or 1" deep))
- "Triple" glazing with up to 1 1/4" insulated glass and interior removable access panels
- Exterior applied or between the lites of dual glazing muntin grids
- Insect screens (fiberglass, aluminum or stainless steel mesh)
- Hurricane Windborne Debris Impact Resistance (Large Missile)
- Multi-point locks, custodial hardware, roto-operators (outswing only), concealed 4-bar stainless steel hinges
- Limit devices (NYCDOH stamped where applicable)



THERMAL PERFORMANCE CHART ¹	WINDOW SIZE	CENTER OF INSULATED GLASS U-FACTOR/SPACER TYPE ("Alum."=Aluminum, "Warm"=Warm Edge) ²							
		0.33/Alum.	0.33/Warm	0.29/Alum.	0.29/Warm	0.24/Alum.	0.24/Warm	0.20/Alum.	0.20/Warm
	24" x 59"*	0.457	0.417	0.434	0.393	0.407	0.364	0.370	0.331
36" x 60"	0.425	0.394	0.399	0.367	0.368	0.334	0.327	0.297	

¹Based on independent certified simulations of 3 1/2" deep outswing version in accordance with NFRC 100 *Designates NFRC Gateway size ²Consult AWM for additional configurations
6/13/19