

## PRODUCT DATA SHEET

### Series 3100i

Projected (Steel Replica)  
3 1/2", 4 1/4" & 5" Frame Depths

PERFORMANCE DATA <sup>1</sup>	OPERATION	AAMA RATING	TEST SIZE (inches)	AIR (cfm/ft <sup>2</sup> ) @ 6.24 psf	WATER (psf)	DESIGN PRESSURE (psf)	STRUCTURAL OVERLOAD (psf)	OITC	U-FACTOR (BTU/HR/FT <sup>2</sup> /F)
	Project Out	AW-PG100	60 x 36	0.01	15	100	150	Consult AWM	See Below

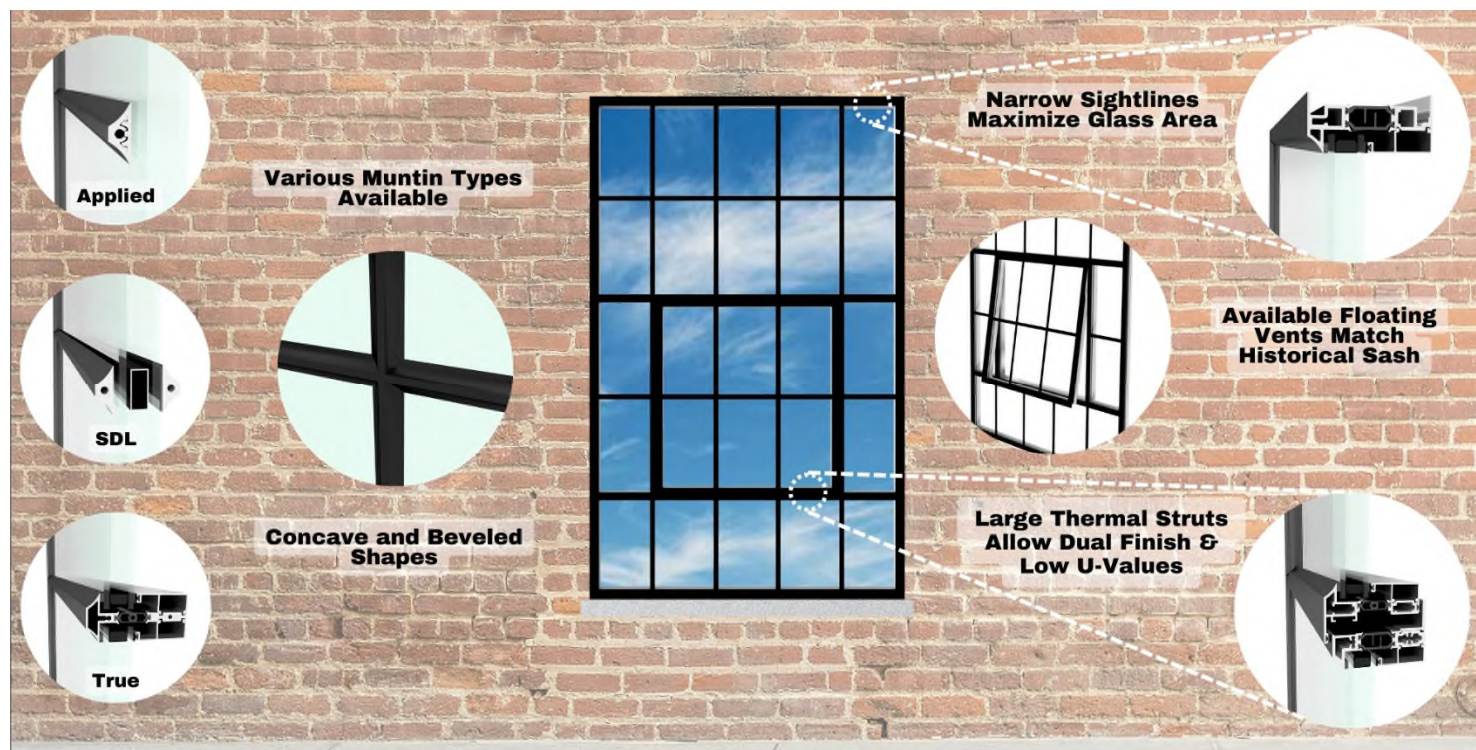
<sup>1</sup>Based on independent certified laboratory testing per AAMA/WDMA/CSA/101/I.S.2/A440. Field results will vary based on size, test methods, accessories & conditions

#### STANDARD FEATURES

- Narrow sightlines for historic replication
- Overlapping vents with concave or beveled glazing leg to simulate original steel windows
- 35 mm thermal struts provide exceptional U-values and dual finish capability
- Wet glazed with structural silicone for maximum seal strength and water resistance
- White bronze cam locks
- AAMA 2603/2604/2605 painted or AAMA 611 anodized finishes

#### OPTIONAL FEATURES

- Concave or beveled true, applied or between the lites of dual glazing muntin grids
- Floating vents to match original steel sash (reduces structural rating)
- Dual glazing with removable access panels (Allows for vandal resistant polycarbonate glazing or integral blinds, 5/8" or 1" deep)
- Insect screens (fiberglass, aluminum or stainless-steel mesh)
- Hurricane Windborne Debris Impact Resistance (Large Missile)
- Custodial hardware, pivot shoe roto operators and motorized operators
- Limit devices (NYCDOH stamped where applicable)



THERMAL PERFORMANCE CHART <sup>1</sup>	WINDOW SIZE	CENTER OF INSULATED GLASS U-FACTOR/SPACER TYPE ("Alum."=Aluminum, "Warm"=Warm Edge) <sup>2</sup>							
		0.33/Alum.	0.33/Warm	0.29/Alum.	0.29/Warm	0.24/Alum.	0.24/Warm	0.20/Alum.	0.20/Warm
	59" x 24"*	0.484	0.468	0.460	0.443	0.431	0.414	0.393	0.379
	48" x 72"**	0.435	0.419	0.407	0.389	0.371	0.354	0.330	0.317

<sup>1</sup>Based on certified simulations of 3 1/2" deep version in accordance with NFRC 100 <sup>2</sup>Consult AWM for additional configurations \*Designated NFRC Gateway Size \*\*Based on equal Fixed/PO

4/1/25